

# Sawgrass Bay Elementary School Lake County, FL

**DRAFT**

May 2012







A SAFE SCHOOLS TRANSPORTATION STUDY

## Sawgrass Bay Elementary School

# Sawgrass Bay Elementary School Snapshot

January 18, 2012

Grades: Pre-K through 5<sup>th</sup>

Total Students:	1,134
■ Provided Bus Transportation :	780
■ Not Provided Bus Transportation:	354
■ Buses assigned to school	18
( 1 double route, 14 Regular, 4 ESE)	19 routes

Students Living within the "Walk Zone":	242
■ Provided Bus Transportation:	135
■ Not Provided Bus Transportation:	107

Observation Day (Sunny)	
■ Walkers:	2
■ Bike Riders:	6



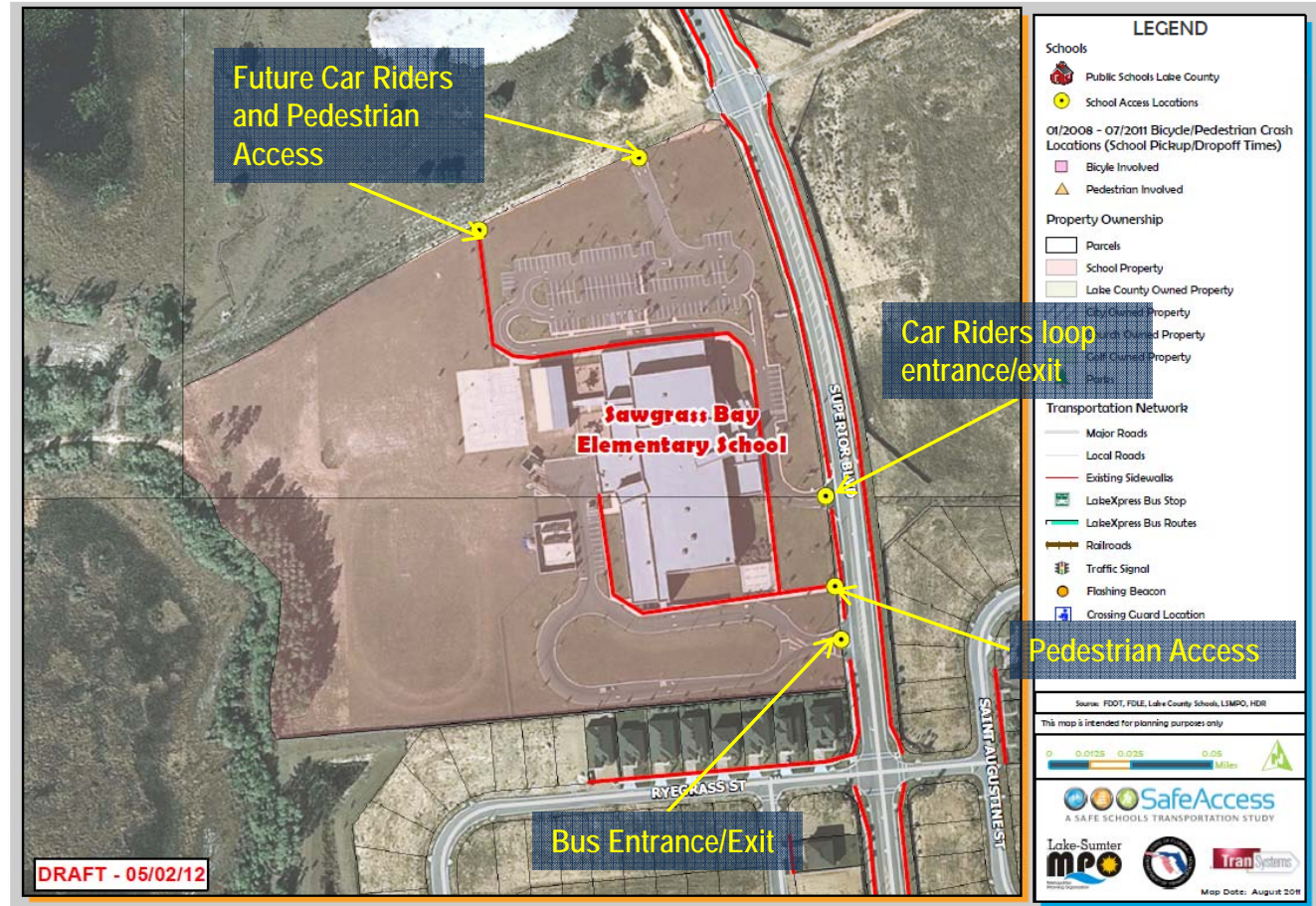
- ✓ Sawgrass Bay Elementary School website – Click [here](#)
- ✓ Lake County website – Click [here](#)
- ✓ Lake County Schools website – Click [here](#)



## Findings:

- ✓ Approximately 56% of students within the 2 mile walk zone are bused.
- ✓ There is one car drop off / pick up area, it is separate from the bus loop.
- ✓ Walking access allowed at multiple points (through grass)
- ✓ It appears that the original plan for the school included connections to the property to the north, but that property has not been developed

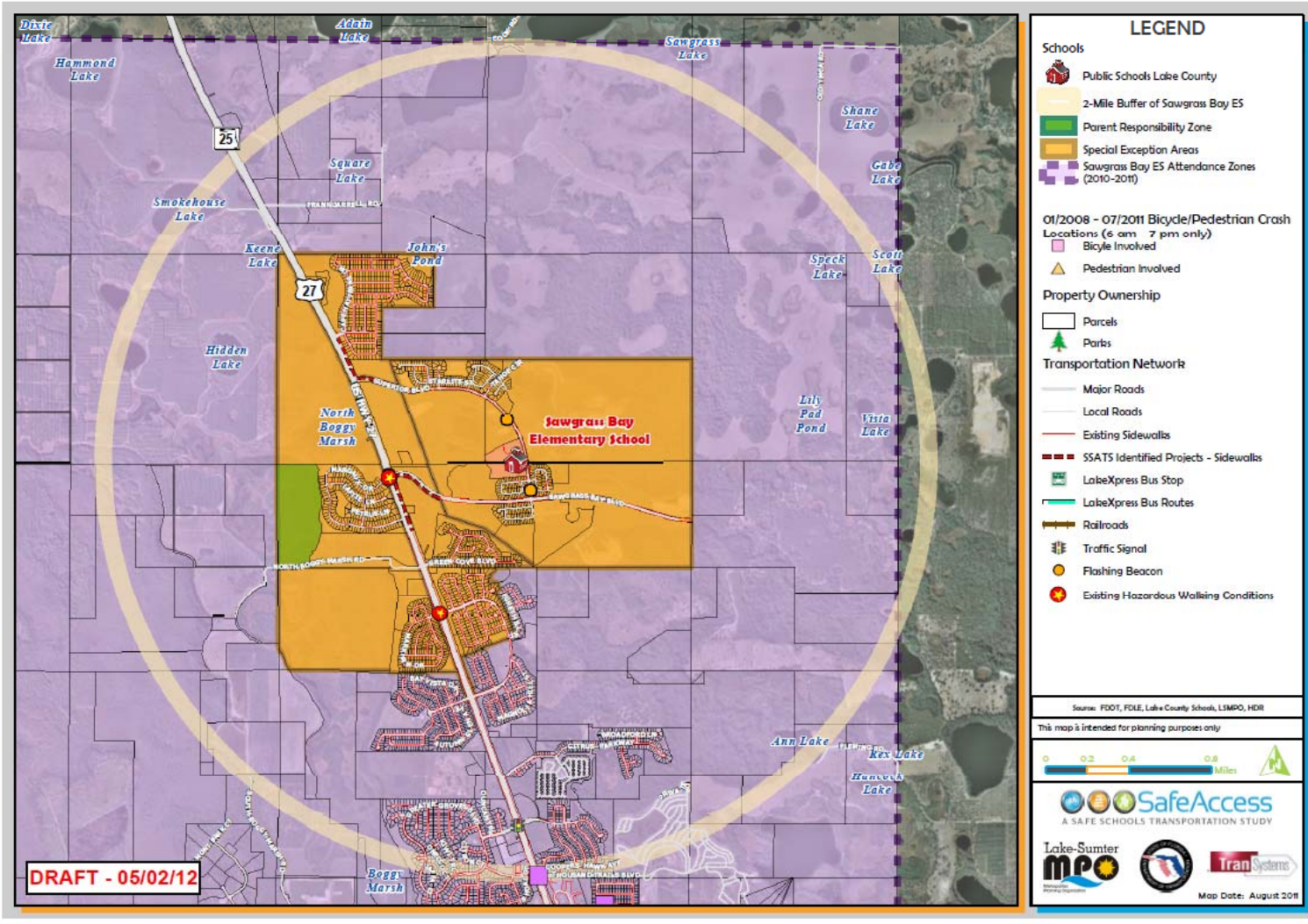
## Sawgrass Bay Elementary School: Student Access Location Map





# Attendance and 2-Mile "Walk" Zone Map

## Sawgrass Bay Elementary School: Attendance and 2-Mile "Walk" Zone Map



# Arrival and Dismissal Schedule

- 6:30 am:** Extended Care opens
- 8:00 am:** Gates Open, 14 Regular Buses, 1 double route, 4 ESE Buses, 5 Bus Loading Positions (under const.)
- 8:30 am:** School Start Time
- 2:30 pm:** Pre-K ESE picks up in bus lane, Reg VPK at front
- 3:00 pm:** Release time – buses generally come in 2 waves. Called by group.

Walkers are held about 10 minutes for staggered release



*Note: Students are released one hour early on Wednesdays*





A SAFE SCHOOLS TRANSPORTATION STUDY

Sawgrass Bay Elementary School

# Bus Access



## Findings:

- ✓ Bus loop area was under construction due to classroom addition during observations.
- ✓ Queue mostly accommodated (1 brief exception), will need to be monitored when unloading occurs at regular position due to shorter storage area.
- ✓ Groups of buses arrive in waves.

# Student Drop-off & Pick-up

## Findings:

- ✓ The car-rider drop off / pick up and parking all enter through a single point with 1 way in and 1 way out, which creates conflicts.
- ✓ There are conflicts within the queue and from parents entering queue through unfinished adjacent roadway.
- ✓ A few parents have been observed previously using Ryegrass as a remote pick-up/drop-off.

## Morning Observations

- ✓ Exit is signed right out only, but several were observed exiting left.
- ✓ Queue did not extend to Superior Boulevard.
- ✓ Conflicts were observed between cars in the pick-up drop off area and walkers crossing from the north through the grass to the school entrance.



Morning Drop-off.





## Afternoon Observations:

- ✓ 1:48 pm (early dismissal day) the car line queue backed up onto Superior
- ✓ 1:48 pm announcement for walkers to front office and car riders to front of building
- ✓ Queue peaked at 13 cars NB and 6 cars SB on Superior
- ✓ Queued traffic forces buses to 'slalom' to reach bus access
- ✓ Two private buses load at pick up area, parents get impatient with waiting and want to go around, driving through entrance lane
- ✓ Queue was cleared from street by approximately 1:58



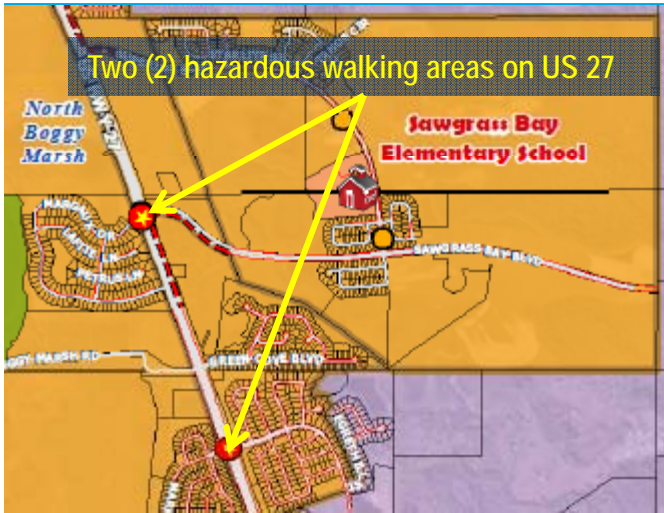




A SAFE SCHOOLS TRANSPORTATION STUDY

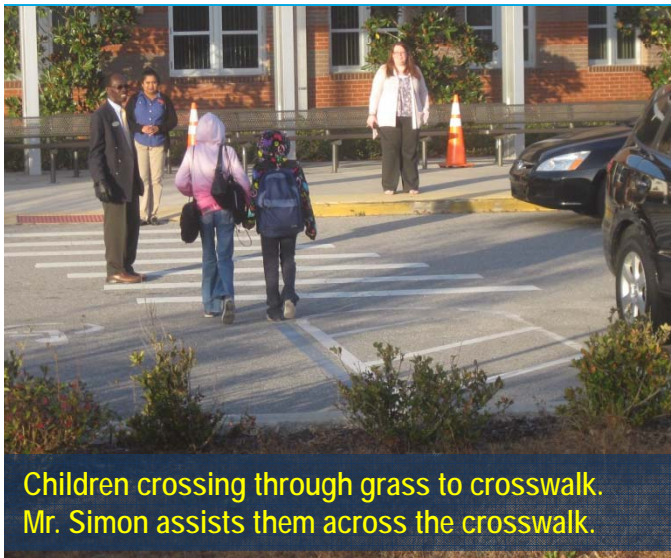
## Sawgrass Bay Elementary School

# Bicycle/Pedestrian “Walkers” Access

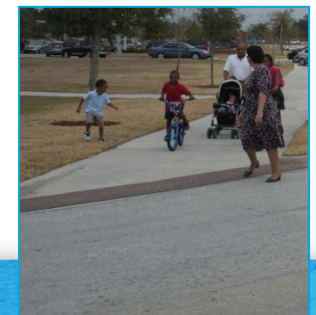


### School Existing Conditions and Procedures:

- ✓ There are two (2) identified hazardous walking zones within the 2 mile walk zone, both of them crossings of US 27.
- ✓ Students walking from the north must walk through the grass, and then cross at a crosswalk from the handicap striping in the parking lot, or walk past the school to the pedestrian access, then back past the bicycle parking to the entrance.
- ✓ There are no crossing guards.
- ✓ There is not a good location to cross for students living to the east, observed assistance from teacher, and parent accompanying children.
- ✓ There is no formal procedure for releasing walkers, they are held a short time (will have to revisit as number of walkers increases).



Children crossing through grass to crosswalk.  
Mr. Simon assists them across the crosswalk.





**SafeAccess**

A SAFE SCHOOLS TRANSPORTATION STUDY

**Sawgrass Bay Elementary School**

# Bicycle/Pedestrian “Walkers” Access

## School Existing Conditions and Procedures:

- ✓ This is the first year there have been cyclists
- ✓ Cyclists walking from the north must cross the driveway to the drop-off / pick up area to get to the walkway to the bicycle parking area
- ✓ Many of the crossings are faded, are missing zebra or ladder style markings, or are not marked at all
- ✓ There has been an observed increase in the number of new homes beginning construction in the areas immediately adjacent to the school, which will continue to increase the number of walkers and cyclists.





# Bicycle/Pedestrian “Walkers” Access

## Recommendations

- ✓ Restore/add ladder style crosswalks at school driveways
- ✓ Restore / upgrade the crosswalks at Ryegrass Street to ladder style crosswalks
- ✓ Provide a midblock crossing with island at front of school and provide a paved pedestrian entrance
- ✓ Develop formal plan for walkers/cyclists for dismissal and consider if there is need for crossing guard
- ✓ Consider adding a safe bicycling unit to the PE curriculum



Children waiting for car pick up, walkers would have to cross to grass at the crosswalk between the cars

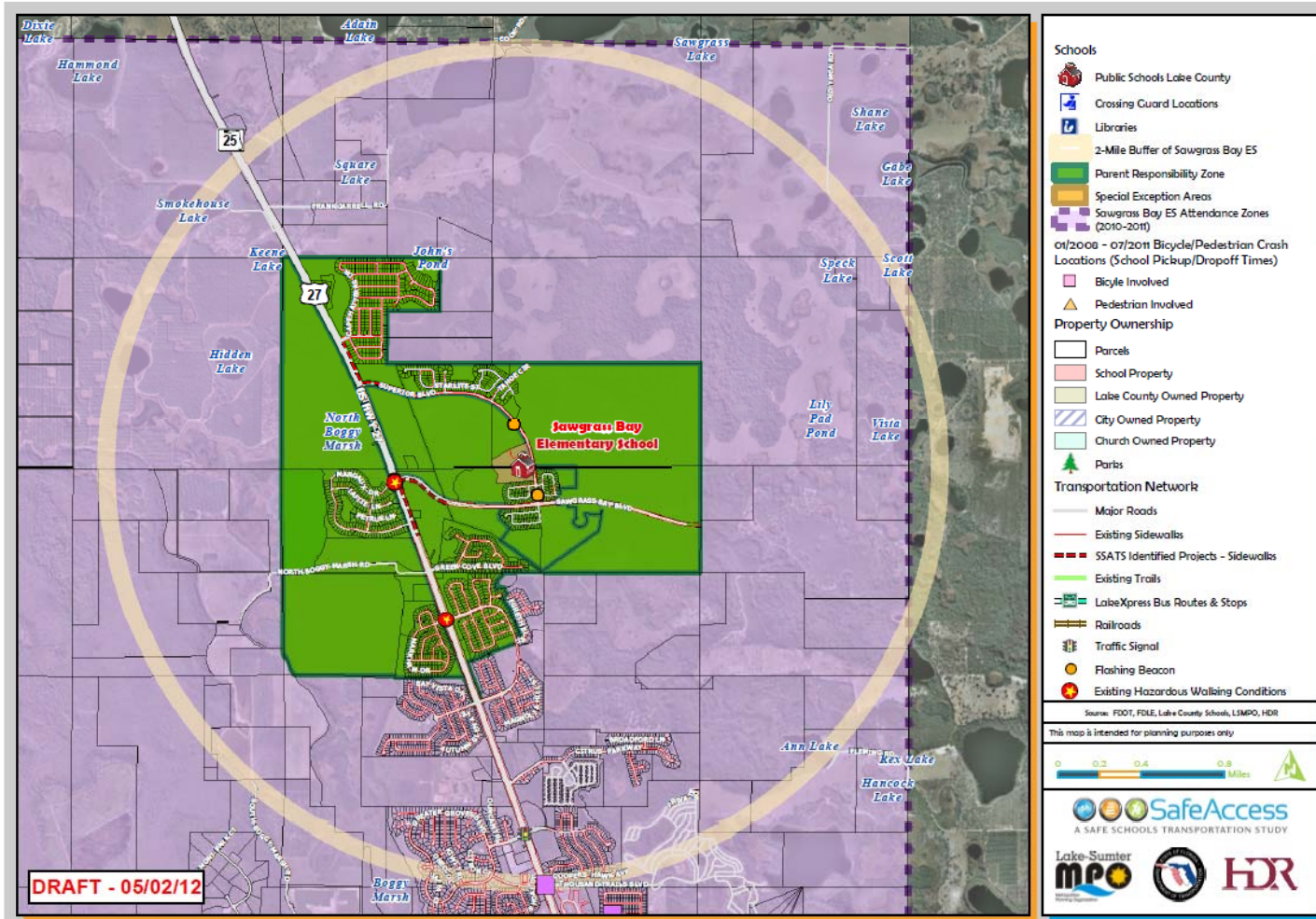


Staff acting as cross guard across Superior Blvd



Cyclists northbound on the east side of Superior Blvd

## Sawgrass Bay Elementary School: Existing Conditions Map





## Findings:

- ✓ The FDOT has added sidewalks on US 27 in conjunction with the 6 lane widening.
- ✓ Widening of US 27 to 6 lanes from north of Boggy Marsh Road (end of current 6 lane) to north of Lake Louisa Road is schedule for design in 2014, currently construction is not funded in the 5 year work program.

## Recommendations:

- ✓ Coordinate with the MPO / FDOT to be kept aware of the timing of this improvement.
- ✓ Coordinate with the County to add sidewalks on Sawgrass Bay Blvd and Superior Boulevard connecting to US 27 in conjunction with the US 27 widening project. This will provide connections from the adjacent developments on the east side of US 27 to the school (Tradd's Landing and Orange Tree).





# Recommended Priority Projects

## Priority Projects:

1. Add a new pedestrian entrance and crosswalk with an island across from School entrance
2. Reinstall / update crosswalks at school driveways to FDOT ladder style crosswalks, repair pavement at bus exit
3. Add access from 4 legged intersection to schools northern driveway and expand parking
4. Add sidewalk on US 27 from end of existing sidewalk to north of Harvest (off map)
5. Add sidewalk on Superior Blvd from end of sidewalk to US 27 (North side is priority) (off map)



6. Add Sidewalk on Sawgrass Bay Blvd from end of sidewalk to US 27 (South side is priority) (off map)
7. Monitor Bus Loop Area

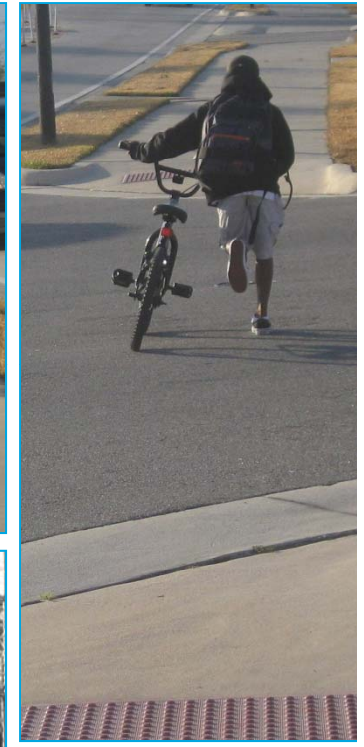


# Priority Project #1

## School Pedestrian Access Improvements including crosswalks and new pedestrian entrance

### Findings:

- ✓ As the amount of residential homes in the area immediately surrounding the school increases, the amount of pedestrian and bicycle activity will also increase.
- ✓ Currently pedestrians and cyclists should enter the school at the pedestrian access south of the car loop driveway, this requires all pedestrians and cyclists coming from the north to pass the school and cross the car loop driveway.
- ✓ Most of the existing (and future) residential development is to the north/and east of Superior Blvd. The only existing marked crosswalks for these future students would be at Ryegrass Street or the unnamed, unbuilt roadway north of the school. Superior Blvd is not stop controlled at these intersections which may be a future safety concern.

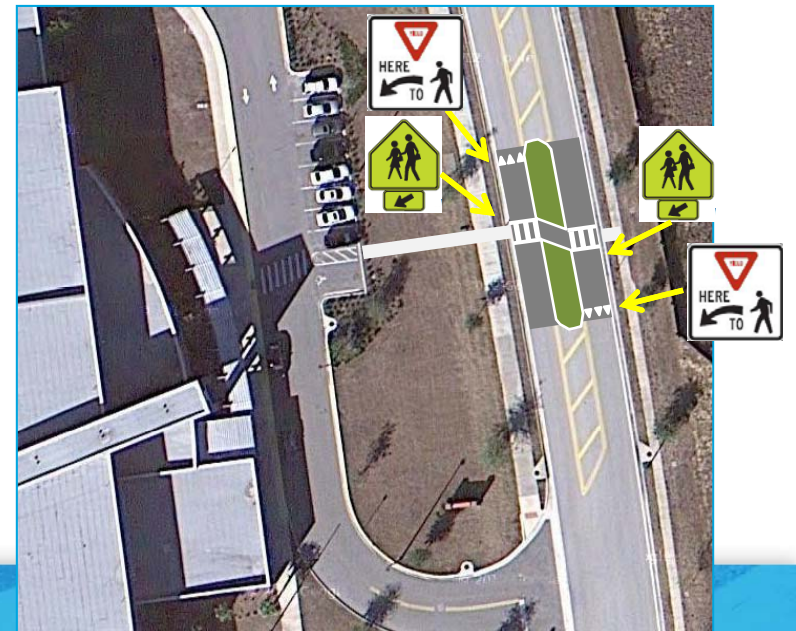


# Priority Project #1

School Pedestrian Access Improvements  
including crosswalks and new pedestrian entrance

## Recommendations:

- ✓ Add midblock crossing of Superior Blvd. in front of the school with raised median island; build sidewalk connection to the existing handicap parking space & crosswalk across the loop driveway.
- ✓ Use “standard” school midblock treatment
  - ✓ High visibility ladder-style crosswalks
  - ✓ Standard school crossing signs supplemented with advance yield lines (set back 30 feet from crosswalk) & yield here to peds signs
- ✓ Angled median break allows crossing of one direction at a time and forces crossing pedestrians to look towards oncoming traffic.
- ✓ Raised median should not be installed until inbound drop-off/pick-up pattern is changed with new access in order to continue to allow southbound vehicles to pass a queue in the center lane; if crosswalk constructed before new access, set up as shown but add median islands later.





# Priority Project #2

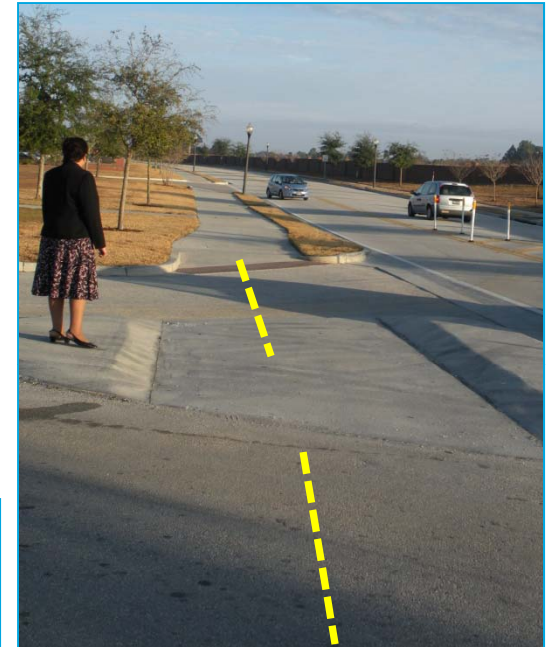
Reinstall / update crosswalks at school driveways to ladder style crosswalks

## Findings:

- ✓ The crosswalks at the car and bus loops accessing the school, or crossing school driveways, have become faded, or were never painted.
- ✓ The crosswalks at Ryegrass St need to be repainted also. If priority project #1 is not implemented, the Ryegrass St. crosswalk should also be updated.

## Recommendation:

- ✓ Repaint all of the crosswalks at school driveways and at Ryegrass St.





**SafeAccess**

A SAFE SCHOOLS TRANSPORTATION STUDY

**Sawgrass Bay Elementary School**

# Priority Projects #3

Construct new access on north side of school  
Reroute Car Loop



## Findings:

- ✓ Currently there is a planned future access to the parking car loop area on the northern boundary of the school.
- ✓ The parking at this school is insufficient, several vehicles were observed parked in field because lot was full.

## Recommendation:

- ✓ Work with Lake County, the school board and the owner/developer of the adjacent property to build the access and expand the parking area.
- ✓ Reroute the drop-off / pick up loop from the new access.



# Priority Project #4/5

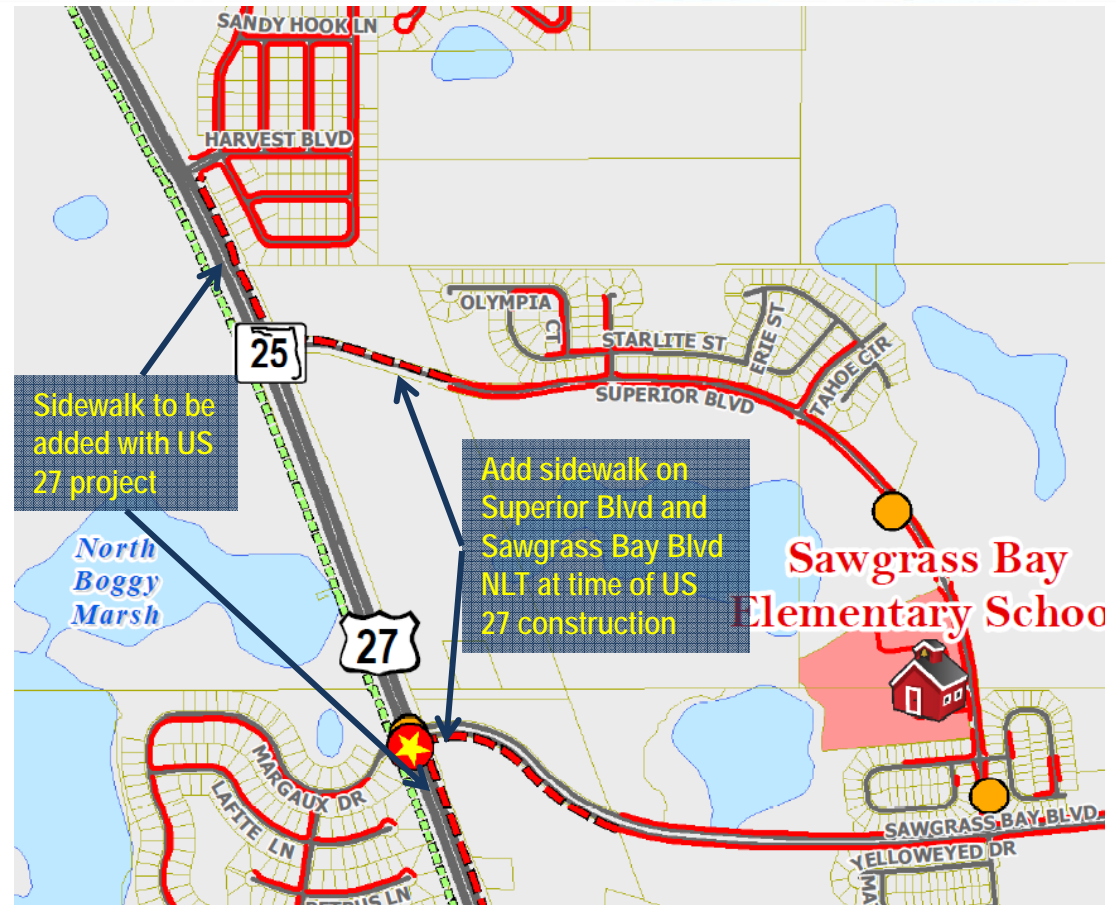
## Sidewalks on US 27, Superior Blvd and Sawgrass Bay Blvd

### Findings:

- ✓ There are currently small missing sections of sidewalks that if complete would allow students within the walk zone to access the school, without crossing US 27. These include the sidewalks on US 27 and on Superior Blvd and Sawgrass Bay Blvd.

### Recommendations:

- ✓ Coordinate with the MPO / FDOT to be kept aware of the timing of the US 27 6 lane improvement, which will include sidewalk.
- ✓ Coordinate with the County to add sidewalks on Sawgrass Bay Blvd and Superior Boulevard connecting to US 27 in conjunction with the US 27 widening project. This will provide connections from the adjacent developments on the east side of US 27 to the school (Tradd's Landing and Orange Tree).



## Sawgrass Bay Elementary School

1	Add pedestrian entrance and mid block crossing at front of school		Add new pedestrian access
2	Add / Restore ladder style crosswalks	School Drives / Ryegrass St	
3	Add access from extension of drive at 4 way stop	Superior Blvd to eastern access	Restripe circulation, improve circulation
4	US 27 sidewalk	Superior Blvd to Harvest east side	Sidewalk to be added as part of 6-laning
5	US 27 sidewalk	Sawgrass Blvd south to existing sidewalk (start of 6 lane)	Sidewalk to be added as part of 6-laning
6	Superior Blvd sidewalk	From US 27 to existing	North side is priority
7	Sawgrass Blvd sidewalk	From US 27 to existing	South side is priority
8	Green Cove Blvd	Gap in sidewalk on southside of roadway at US 27	Add Sidewalk
9	Add / Require sidewalk on Tahoe circle	Superior Blvd to Superior Blvd	Add / complete require sidewalk on both sides, particularly if the long term plan ties this road back to the road adjacent to the school.
10	Requirements for sidewalk connections to Avalon Groves		
11	Pedestrian path across from school	Internal to adjacent neighborhood	With development of adjacent property
12	Superior Blvd	Sawgrass Blvd to US 27	Add islands as appropriate in 3 lane sections where there will be no driveways / turning movements
13	Crossings of US 27	At Superior Blvd, Sawgrass Blvd	With signals, pedestrian actuated phases and crossing guards (multiple) if needed to reduce busing costs
14	Add Parking	At School	Additional Parking (with project 3 potentially)



This website represents an ongoing commitment to increase safe access to schools within the Lake~Sumter Metropolitan Planning Organization Planning Area.

Updates to data, and suggestions for programming and project ideas are welcome from all agencies and the general public.

**Mike Woods**

Project Manager, Transportation Planner

(352) 315-0170

[mwoods@lakesumtermpo.com](mailto:mwoods@lakesumtermpo.com)



**Mindy Heath, AICP**

Consultant Project Manager

(407) 420-4200

[Mindy.heath@hdrinc.com](mailto:Mindy.heath@hdrinc.com)



*Promoting Regional  
Transportation Partnerships*