



A SAFE SCHOOLS TRANSPORTATION STUDY

Pine Ridge Elementary School Clermont, FL

DRAFT

May 2012





A SAFE SCHOOLS TRANSPORTATION STUDY

Pine Ridge Elementary School

Pine Ridge Elementary School Snapshot

January 19, 2012

Grades: Pre-K – 5th

Total Students: 856

- Provided Bus Transportation : 505
- Not Provided Bus Transportation: 351

Students Living within the “Walk Zone”: 263

- Provided Bus Transportation: 109
- Not Provided Bus Transportation: 154

Observation Day (Sunny)

- Walkers: 1
- Bike Riders: 0



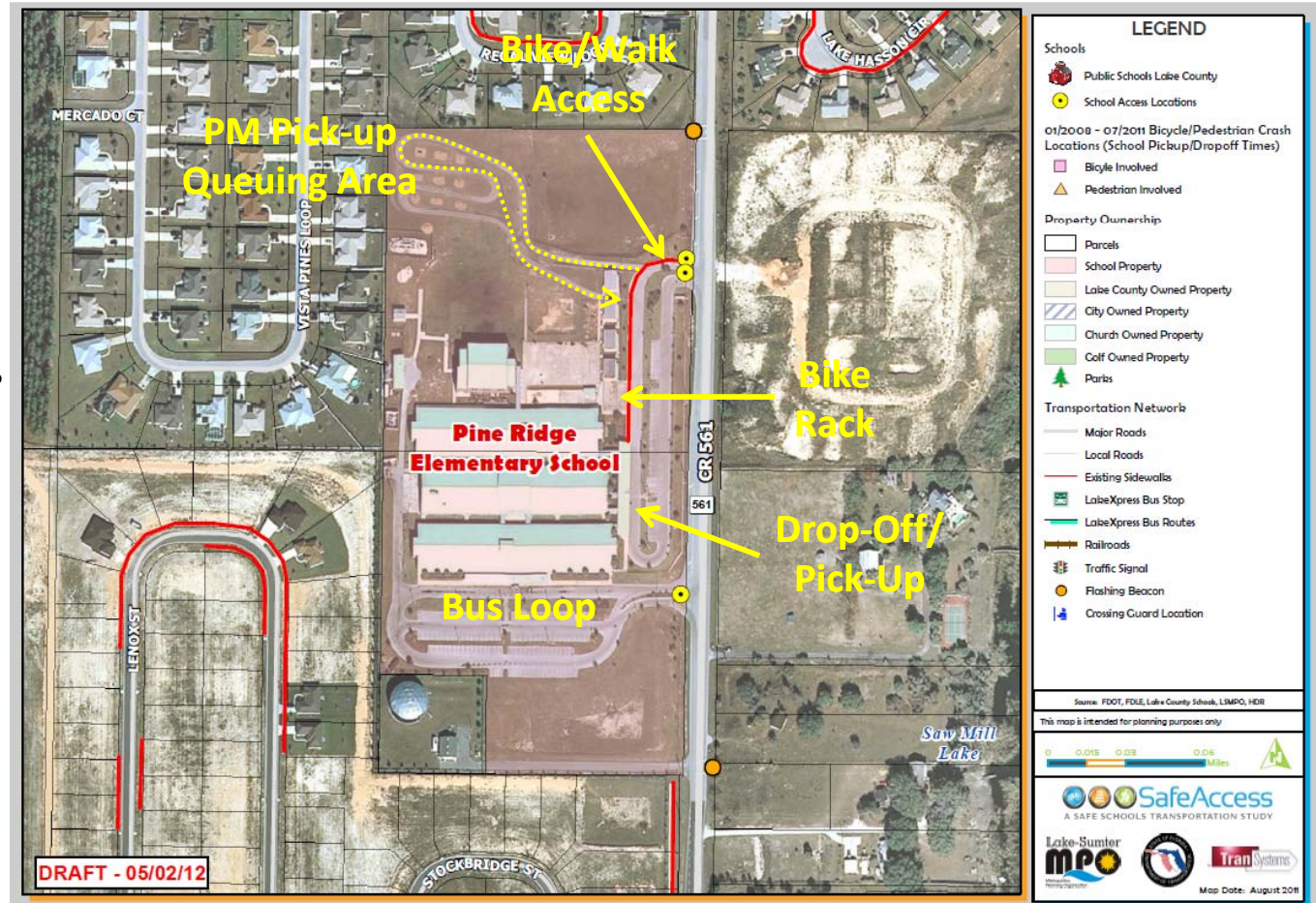
- ✓ Pine Ridge Elementary School website – Click [here](#)
- ✓ Lake County website – Click [here](#)
- ✓ Lake County Schools website – Click [here](#)

Pine Ridge Elementary School

Findings:

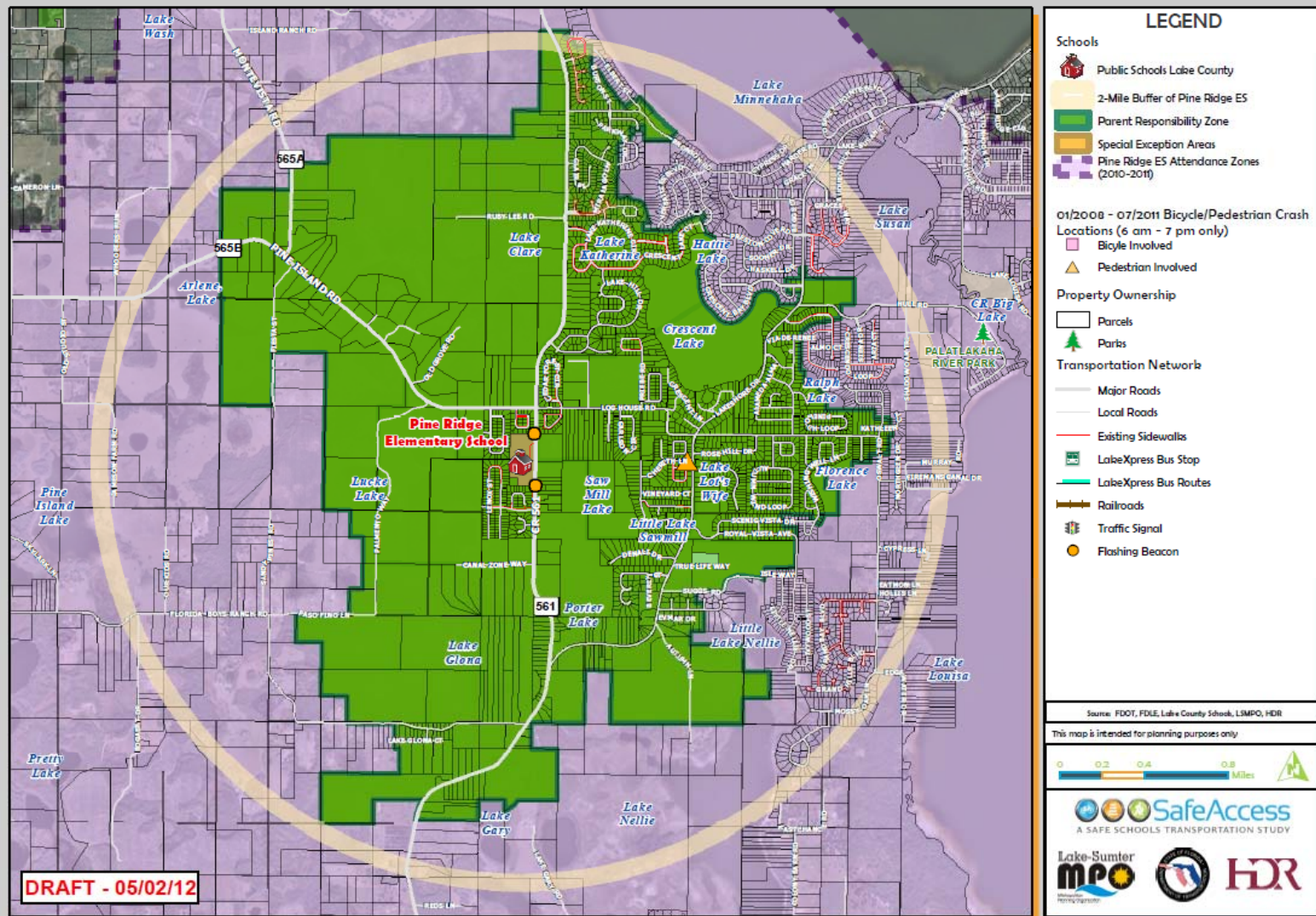
- ✓ Separate access for drop-off/pick-up and buses
- ✓ PM pick-up line uses PE field for additional queue storage space
- ✓ Sidewalk provided along main driveway to CR 561, but there are no sidewalks on CR 561
- ✓ Flashing beacons denote 20 mph school zone on CR 561 which extends the length of the school property (normal posted speed is 55 mph)
- ✓ CR 561 has left and right turn lanes at both access driveways

Pine Ridge Elementary School: Student Access Location Map



Attendance and 2-Mile "Walk" Zone Map

Pine Ridge Elementary School: Attendance and 2-Mile "Walk" Zone Map



Arrival and Dismissal Schedule

7:00 am:	ELC begins (approx. 70 students)
8:00 am:	Supervision of drop-off begins
8:30 am:	School start time
2:45 pm:	Gate to PE fields opens for pick-up queuing
2:50 pm:	School release for special needs
2:55 pm:	School release for daycare
3:00 pm:	School end time; release for all other students
3:00 – 6:00 pm:	ELC program (approx. 70 students)

Note: Students are released one hour early on Wednesdays





Findings:

- ✓ 12 regular buses & 3 ESE buses serve the school
- ✓ Bus loop is located on the south end of the property; buses are stacked in a single queue
- ✓ Students are staged in the middle of the bus ramp by bus number and led to their bus upon arrival
- ✓ Bus queue was observed briefly backing up onto CR 561 in PM, but did not exceed the available southbound right turn lane storage

Findings:

- ✓ Drop-offs are allowed to start at 8:00 AM when school supervision begins
- ✓ Traffic volume is light on CR 561 (AM and PM periods); most traffic exiting the school driveway turns left & without difficulty
- ✓ Minor queuing observed on CR 561 in the AM, but not beyond the existing turn lane storage; no operational issues observed during AM
- ✓ Students line up by grade level for PM pick-up; student safety patrol assists school staff in running pick-up line
- ✓ Parents that park to get their students cause conflict for parents exiting the pick-up line
- ✓ No parking signs are posted along CR 561 in front of the school to discourage waiting along the roadway; no vehicles were observed parked at this location



Traffic exiting drop-off loop in AM



PM pick-up

Findings:

- ✓ PM pick-up line uses PE field to gain additional queue storage
 - ✓ Those picking up Pre-K or special needs students (different color placard used) skip the extended queue line & go straight to the pick-up area
 - ✓ On regular release days, gate to queuing area opens at 2:45; parents advised not to arrive at the school prior to that time
 - ✓ Vehicles observed arriving prior to gate opening began queuing in the southbound right turn lane; this occurs because the entering driveway is only one lane wide and queuing at the gate would result in the driveway being blocked to other users
 - ✓ Maximum observed queue was 31 vehicles, which extended beyond the right turn lane and most of the distance to the Log House Rd/CR 565B intersection
- ✓ There are no queuing issues on CR 561 once the gate to the additional storage area has been opened





A SAFE SCHOOLS TRANSPORTATION STUDY

Pine Ridge Elementary School

Bike/Walk Access



School sidewalk to CR 561

Findings:

- ✓ A single sidewalk connection is provided to CR 561, but a gate at the end of the sidewalk was closed forcing pedestrians into the main school driveway to exit to CR 561
- ✓ The area surrounding the school is rural and there are no sidewalks on CR 561 or the closest intersecting collector road, CR 565B / Log House Rd; one exception is a short stretch of sidewalk on the west side of CR 561 immediately south of the school along the Barrington Estates frontage



Gate blocks end of school sidewalk at CR 561



CR 561 sidewalk south of school



No sidewalks on CR 561 north of school



Findings:

- ✓ Only one pedestrian was observed, escorted by an older sibling
- ✓ Bike parking is nearly ideal; there is an abundant supply of bike racks, which are located in a secure, paved bike cage adjacent to the front of the school; however, there are not currently any bicyclists due to the lack of facilities in the vicinity of the school
- ✓ No bicycle / pedestrian safety program is currently offered by the school

Recommendations:

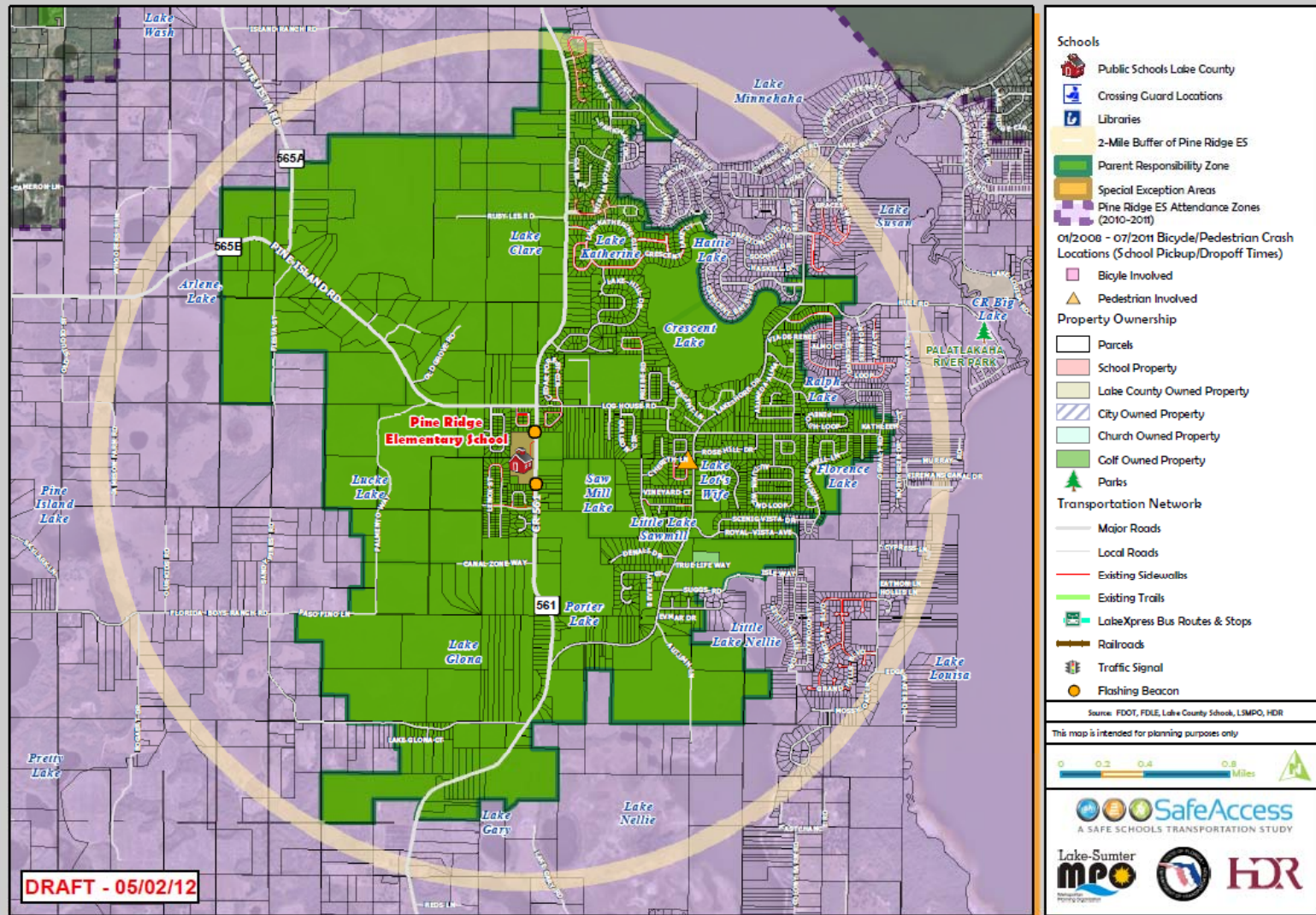
- ✓ Focus on getting sidewalks built to connect to neighborhoods immediately surrounding school on CR 561, CR 565B, and Log House Rd

Issues:

- ✓ Lack of right-of-way is likely to be an issue for many segments
- ✓ Any sidewalks are a good step, but feasibility of walk/bike trips to school dependent on direct facility connections to school

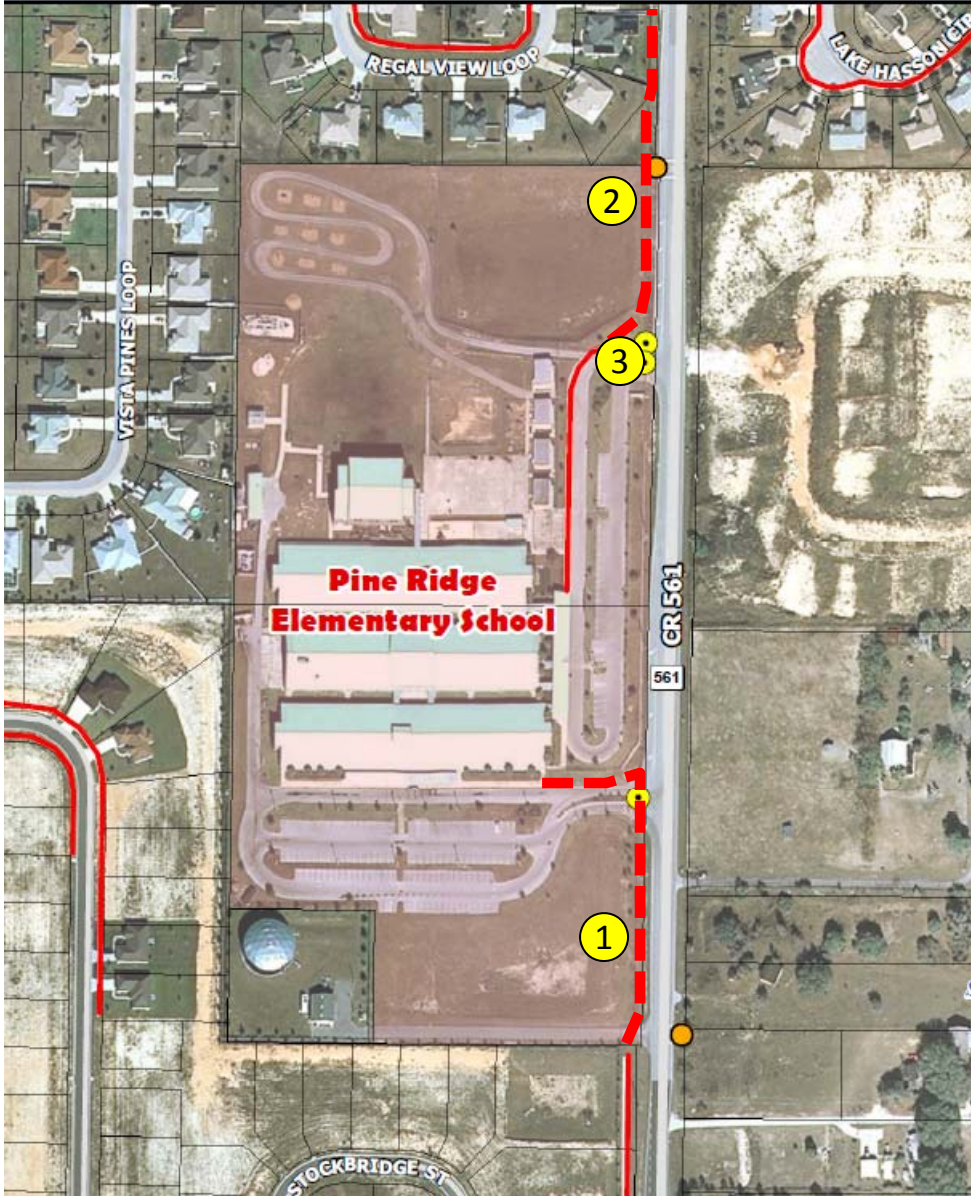


Pine Ridge Elementary School: Existing Conditions Map



DRAFT - 05/02/12

Pine Ridge Elementary School



Priority Projects:

1. New sidewalk connecting from bus loop to existing sidewalk south of school
2. New sidewalk connection from existing school sidewalk to CR 565B
3. Widen main school driveway to provide 2 inbound lanes



SafeAccess

A SAFE SCHOOLS TRANSPORTATION STUDY

Pine Ridge Elementary School

Recommended Priority Projects



Priority Projects:

4. New sidewalk: CR 565B - CR 561 to Vista Pines Loop (south side)
5. New sidewalk: Log House Rd - CR 561 to Lk Hasson Cir / Cedar Forest Cir (both sides)
6. Crossing guard: CR 561 / CR 565B intersection

Other Projects:

7. New sidewalk: Log House Rd - Lk Hasson Cir to Reagans Run Dr (south side)
8. New sidewalk: CR 561 - CR 565B to Cypress Landing Ave (east side)
9. New sidewalk: Lakeshore Dr - Log House Rd to Cherith Ln (west side) & Oakshore Ln (east side)
10. New sidewalk: Lakeshore Dr - Log House Rd to Hull Rd (east side)
11. Crossing guard: Log House Rd / Lakeshore Dr intersection



A SAFE SCHOOLS TRANSPORTATION STUDY

Pine Ridge Elementary School

Priority Project #1

CR 561 Sidewalk from School to South



CR 561 along southern portion of school property, looking south



CR 561 existing sidewalk along Barrington Estates frontage on west side of road, just south of school

Findings:

- ✓ The only existing sidewalk along CR 561 near the school is immediately south of the school property
- ✓ Sidewalk runs along Barrington Estates frontage on the west side of CR 561 (same side as school)
- ✓ Barrington Estates only has a small number of existing homes, but is planned to continue to develop, including additional phases, which would bring more students within close walking distance of school

Recommendations:

- ✓ Construct a new sidewalk that connects from the bus loop to the Barrington Estates sidewalk along CR 561

Issues:

- ✓ There is a grade difference from the existing sidewalk to the roadside; could potentially run sidewalk along top of berm adjacent to retention pond but would require relocating existing fence



A SAFE SCHOOLS TRANSPORTATION STUDY

Pine Ridge Elementary School

Priority Project #2

CR 561 Sidewalk from School to CR 565B



No sidewalks on CR 561 north of school



Right-of-way is tight to the north of the school on CR 561

Findings:

- ✓ The existing school sidewalk ends at CR 561 with no connection to the neighborhoods north of the school
- ✓ Most students within close proximity live north of the school

Recommendations:

- ✓ Construct a new sidewalk that connects from the existing school sidewalk to CR 565B along the west side of CR 561

Issues:

- ✓ Could use the berm on school property with the fence relocated
- ✓ Right-of-way appears limited on the west side of CR 561 north of school property
- ✓ Could shift the CR 561 roadway alignment to the east to accommodate the sidewalk, but that drastically would increase the project costs



A SAFE SCHOOLS TRANSPORTATION STUDY

Pine Ridge Elementary School

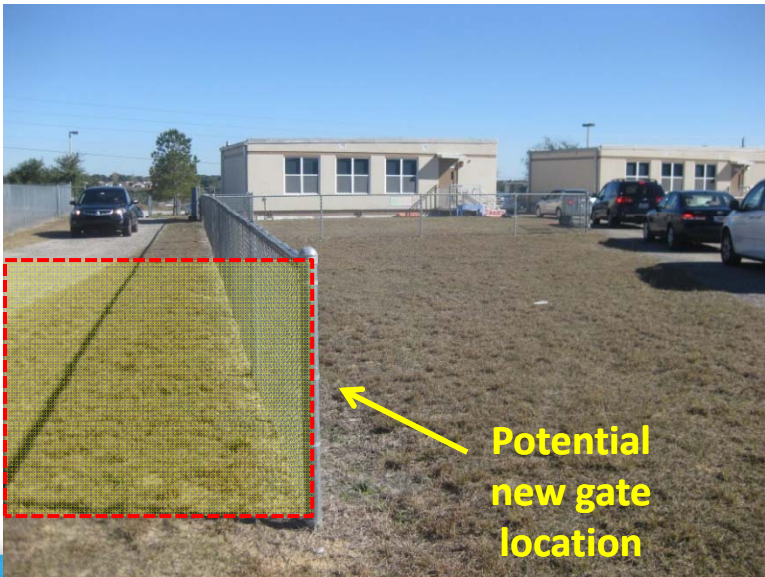
Priority Project #3

Widen Main School Driveway Entry



Findings:

- ✓ The existing main school driveway entry is one lane wide (13 feet curb to curb)
- ✓ Prior to gate opening for additional pick-up queue storage, vehicles queue in school's right turn lane to avoid blocking driveway, but were observed to queue beyond the available right turn storage; this is a potential safety hazard as this queue extends beyond the 20 mph school zone and the through lane is partially or fully blocked with a posted speed of 55 mph
- ✓ Having two entry lanes would allow stacking to begin on-campus prior to opening of the gate without blocking the school access, and reduce the off-campus queuing
- ✓ Gates regulating access to additional queue space could be moved to end of area with fencing on both sides; total additional queue space would be about 300 feet (approx. 12 vehicles)
- ✓ Additional queue space may negate need to extend southbound right turn lane into school



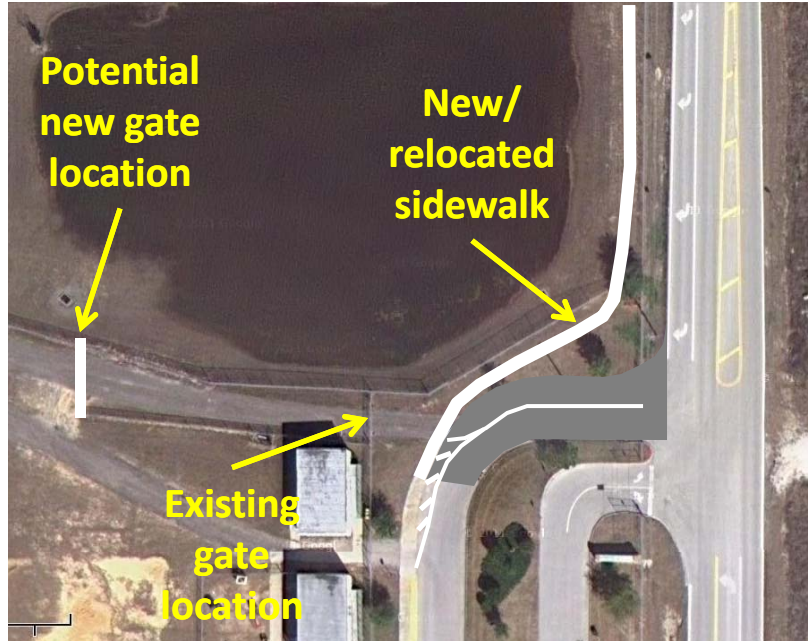


A SAFE SCHOOLS TRANSPORTATION STUDY

Pine Ridge Elementary School

Priority Project #3

Widen Main School Driveway Entry



Recommendations:

- ✓ Consider widening entry driveway to two lanes & relocating the gate to the additional queuing area
- ✓ Preferred to widen driveway to outside which would require relocating the sidewalk (which would be needed anyway if sidewalk is continued to the north along the retention berm)
- ✓ Continue to request parents not arrive until after the time the gate is opened to pick up students; may consider potential penalties for parents arriving early & queuing on CR 561
- ✓ Alternative improvement:
 - ✓ Lengthen the southbound right turn lane into the school to help prevent queuing into the through lane
 - ✓ Move location of 20 mph school speed zone further north on CR 561 to just south of the CR 565B intersection



A SAFE SCHOOLS TRANSPORTATION STUDY

Pine Ridge Elementary School

Priority Project #4

CR 565B Sidewalk from CR 561 to Vista Pines Loop



Findings:

- ✓ There are no sidewalks along CR 565B west of CR 561
- ✓ There are two small neighborhoods (Windscape II & Vista Pines) just west of CR 561 that are within a short walk of the school; Windscape II has sidewalks that connect to CR 565B
- ✓ Could potentially locate the sidewalk on the berm on the south side of the drainage ditch near the residential fences

Recommendations:

- ✓ Construct a new sidewalk that connects from Vista Pines Loop to CR 561 along the south side of CR 565B

Issues:

- ✓ Right-of-way availability could be an issue



Log House Rd east of CR 561 (south side)



Log House Rd east of CR 561 (north side)

Findings:

- ✓ There are no sidewalks along Log House Rd east of CR 561
- ✓ There are two small neighborhoods (Windscape I & Windscape III) just east of CR 561 that are within a short walk of the school; both neighborhoods have existing sidewalks that connect to Log House Rd
- ✓ Sidewalks on both sides of the street would allow students to cross Log House Rd at CR 561 intersection (with potential crossing guard)

Recommendations:

- ✓ Construct new sidewalks on both sides of Log House Rd from CR 561 to Lake Hasson Cir / Cedar Forest Cir

Issues:

- ✓ Right-of-way availability could be an issue, although this section appears to have wider right-of-way



Log House Rd approaching CR 561 intersection



CR 561 approaching Log House Rd intersection

Findings:

- ✓ Once sidewalk connections from priority projects #2 & #5 are in place, a crossing guard will be needed to help students cross the CR 561/CR 565B intersection safely.
- ✓ Lake County completed a traffic study in November 2011 of the CR 561/CR 565B intersection
 - ✓ The analysis did not show a safety issue based on the recorded crash history
 - ✓ A westbound left turn lane was recommended to be added
 - ✓ No changes to the existing two-way stop control were warranted;
- ✓ With CR 561 continuing to be free flow, a crossing guard will be even more important at this location
- ✓ With crossing guard at this location, relocate 20 mph school zone to north of the intersection



Pine Ridge Elementary School

Contact Information

This website represents an ongoing commitment to increase safe access to schools within the Lake~Sumter Metropolitan Planning Organization Planning Area.

Updates to data, and suggestions for programming and project ideas are welcome from all agencies and the general public.

Mike Woods

Project Manager, Transportation Planner

(352) 315-0170

mwoods@lakesumtermpo.com



Mindy Heath, AICP

Consultant Project Manager

(407) 420-4200

Mindy.heath@hdrinc.com



*Promoting Regional
Transportation Partnerships*