

# East Ridge High School Clermont, FL

**DRAFT**

May 2012

**HDR**

Lake-Sumter  
**MPO**  
Metropolitan  
Planning Organization

## East Ridge High School

# East Ridge High School Snapshot

January 13, 2012

Grades: 9<sup>th</sup> – 12<sup>th</sup>

Total Students: 2,293

- Provided Bus Transportation : 1,247
- Not Provided Bus Transportation: 1,046

Students Living within the “Walk Zone”: 321

- Provided Bus Transportation: 40
- Not Provided Bus Transportation: 281

Observation Day (Partly Cloudy)

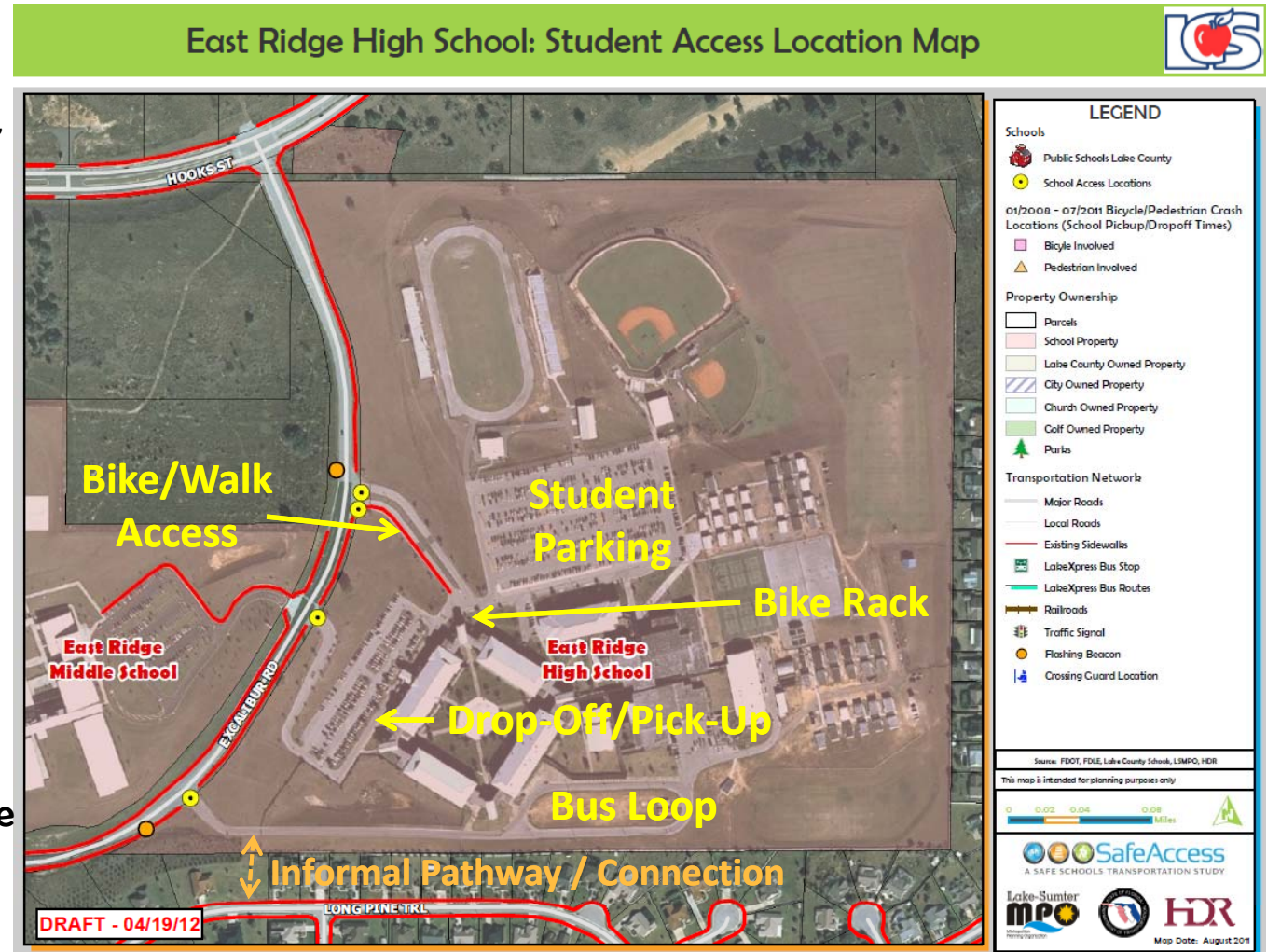
- Walkers: 50 (est.)
- Bike Riders: 1



- ✓ East Ridge High School website – Click [here](#)
- ✓ City of Clermont website – Click [here](#)
- ✓ Lake County Schools website – Click [here](#)

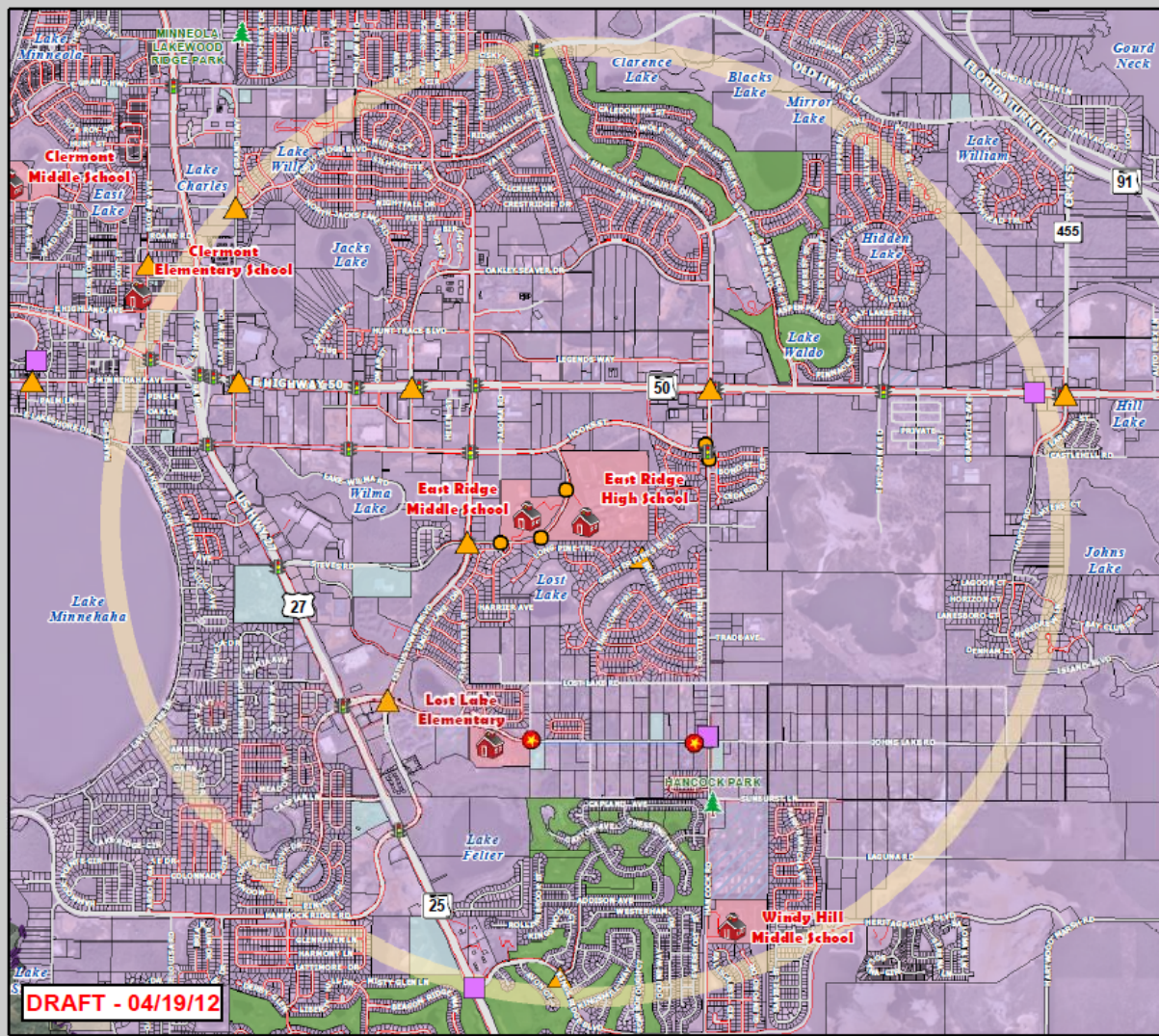
## Findings:

- ✓ Access for student parking, drop-off/pick-up, and bus loop are all separate
- ✓ Single bike/walk access at student parking driveway; most walking occurs to/from the south/west
- ✓ Excalibur Rd traffic is almost exclusively school-related
- ✓ 20 mph school zone on Excalibur Rd extends from north of student parking access to west of East Ridge Middle School
- ✓ City of Clermont annexed Excalibur Rd in January



# Attendance and 2-Mile "Walk" Zone Map

## East Ridge High School: Attendance and 2-Mile "Walk" Zone Map



**LEGEND**

**Schools**

- Public Schools Lake County
- 2-Mile Buffer of East Ridge HS
- East Ridge HS Attendance Zones (2010-2011)

**01/2008 - 07/2011 Bicycle/Pedestrian Crash Locations (6 am - 7 pm only)**

- Bicycle Involved
- Pedestrian Involved

**Property Ownership**

- Parcels
- Parks

**Transportation Network**

- Major Roads
- Local Roads
- Existing Sidewalks
- Planned Sidewalks (Programmed)
- LakeXpress Bus Stop
- LakeXpress Bus Routes
- Railroads
- Traffic Signal
- Flashing Beacon
- Existing Hazardous Walking Conditions

Source: FDOT, PDLE, Lake County Schools, LSMPO, HDR

This map is intended for planning purposes only.



**DRAFT - 04/19/12**

- 7:25 am:** School start time
- 2:25 pm:** School release time (all students)
- 2:45 pm:** Dual enrollment students allowed to return for after school activities

*Note: Students are released one hour early on Wednesdays*



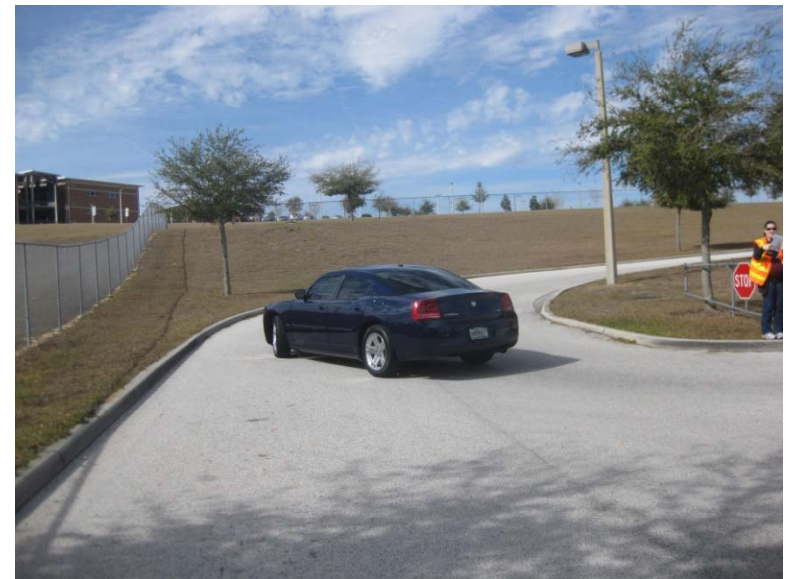


## Findings:

- ✓ Buses queue in a single line; adequate storage available for all buses (30 regular, 5 ESE), & additional space is available if needed
- ✓ Arrival and dismissal was organized and efficient
- ✓ Buses turn left out onto Excalibur Rd; no issues or conflicts observed
- ✓ Walkers have to cross bus driveway; some students use bus loop to walk in/out of school

## Findings:

- ✓ Moderate levels of queuing and congestion observed on Excalibur Rd due to drop-off/pick-up line (AM & PM)
- ✓ School staff noted that queues extended onto Hooks St & lots of crashes at Excalibur Rd/Hooks St intersection last year (lost 700 students to LMHS this year)
- ✓ Queuing is not currently a significant issue since left turn lanes are provided on Excalibur Rd at all access points & there is very little non-school traffic
- ✓ Routing through parking lot is controlled by gates at parking row entrances
- ✓ There is a tight corner at the bottom of the hill, which can result in conflicts between entering & exiting vehicles



## Findings:

- ✓ Numerous conflicts observed at driveway exit in PM
  - ✓ Most walkers cross this driveway & often have to negotiate through queued vehicles
  - ✓ Sight distance for left turns out onto Excalibur Rd is limited due to queuing

## Recommendations:

- ✓ Restrict exiting traffic at pick-up area to right turns out only with island at driveway; also consider restricting entering traffic to right turns only
- ✓ Add center striping on driveway at bottom of hill to guide entering/exiting traffic & consider trimming curb





## Findings:

- ✓ Approx. 600 student parking spaces available to sophomores, juniors, & seniors with parking permit; last year had waiting list of 40 students to get permit, this year about 200 empty spaces
- ✓ Student parking lot has 2 handicap parking spaces but no ramp is provided to sidewalk at these spaces; however, there is a ramp a few spaces down the same row of parking

## Recommendations:

- ✓ Restripe parking row to locate handicap spaces on either side of existing curb ramp





# Remote Drop-off/Pick-up

## Student Parking Lot Driveway

### Findings:

- ✓ Approx. 20-25 vehicles observed dropping off students at top of student parking lot driveway in AM, & several vehicles picked-up students at this location in PM
- ✓ Although no conflicts were observed at this location, the potential exists for congestion, queuing, and conflicts due to unauthorized drop-off/pick-up activity





### Findings:

- ✓ Many students observed being dropped off or picked up along Excalibur Rd, many in dark conditions & having to cross the road
- ✓ 2 resource officers are present on the campus, but do not direct or monitor traffic along Excalibur Rd
- ✓ There is no supervision of students off campus; there are potential safety issues and traffic disruptions when loading or unloading at unauthorized locations

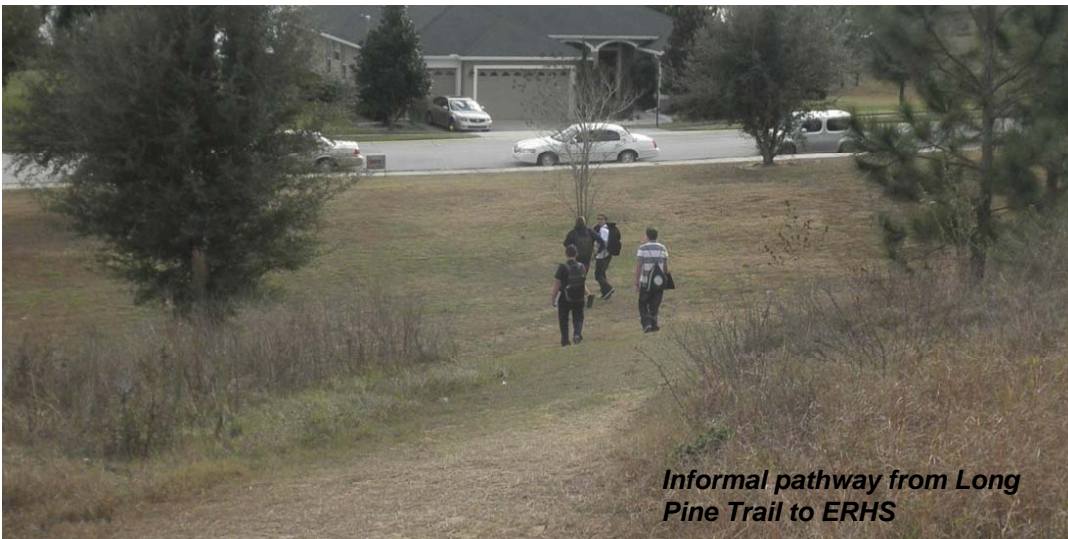


### Findings:

- ✓ Some students are picked up on Long Pine Trail after walking down informal “pathway” south of the school to Long Pine Trail

### Recommendations:

- ✓ No standing signs (specific to school pick-up hours) should be considered on Long Pine Trail if complaints received
- ✓ Periodic enforcement likely needed to discourage remote pick-up



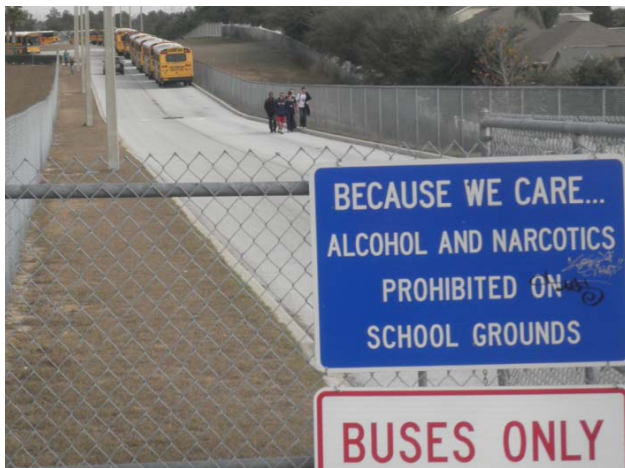
*Informal pathway from Long Pine Trail to ERHS*





## Findings:

- ✓ Only one bicyclist observed
- ✓ One bicycle rack is provided on campus; location (on grass), security (not bolted down, not within gated area) & style (“wheel bender”) are not ideal
- ✓ Walk/bike access to school is along the student parking lot driveway (northern most access point)
- ✓ No curb ramp or marked crosswalk provided along walk access immediately adjacent to front of school
- ✓ Nearly all walkers observed coming from/going to the south/west; only 2 students observed walking north from school (PM)
- ✓ Most walkers in AM observed to use bus loop and many use bus loop in PM as well (no sidewalk + pinch point at gate)

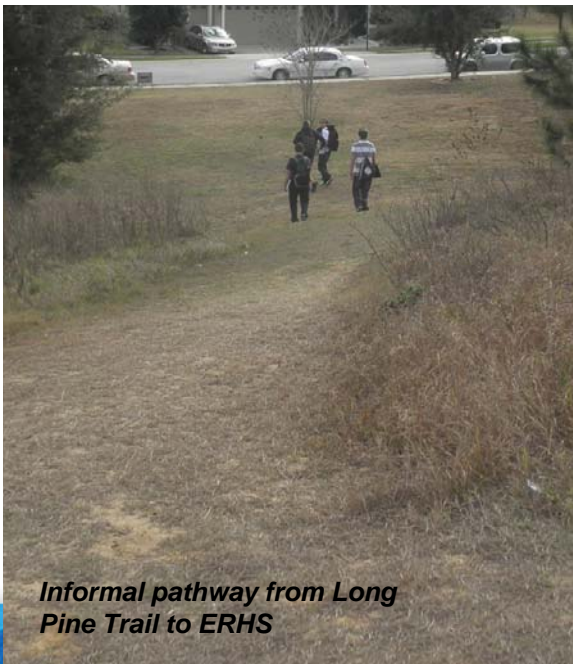




## Findings:

- ✓ Several students observed walking up main school driveway to Excalibur Rd in PM (no sidewalk + pinch point at gate)
- ✓ Safety concerns with students crossing main school driveway; significant conflicts observed during PM release period





## Findings:

- ✓ Vast majority of students living within 2-mile walk zone live in 2 neighborhoods: Greater Pines & The Reserve at Lost Lake
- ✓ Sidewalks are incomplete on Hancock Rd
- ✓ Most direct route from Greater Pines to school is via an informal pathway connection from Long Pine Trail (can save nearly 1 mile in distance traveled to the school); several students were observed cutting through this area
- ✓ Pathway is across the east side of a large occupied lot; a “Private Property No Trespassing” sign is posted





## Recommendations:

- ✓ Consider potential purchase of easement from Greater Pines homeowner to formalize connection to school from Long Pine Trail; evaluate how to “formalize” (i.e., paved/unpaved, ADA compatibility due to grade of slope, use of fencing)
- ✓ Construct new sidewalk connection to front of school from Excalibur Rd at bus loop driveway
- ✓ Relocate existing bike rack to paved location inside gated area; consider updating rack to newer style & providing more bike parking capacity



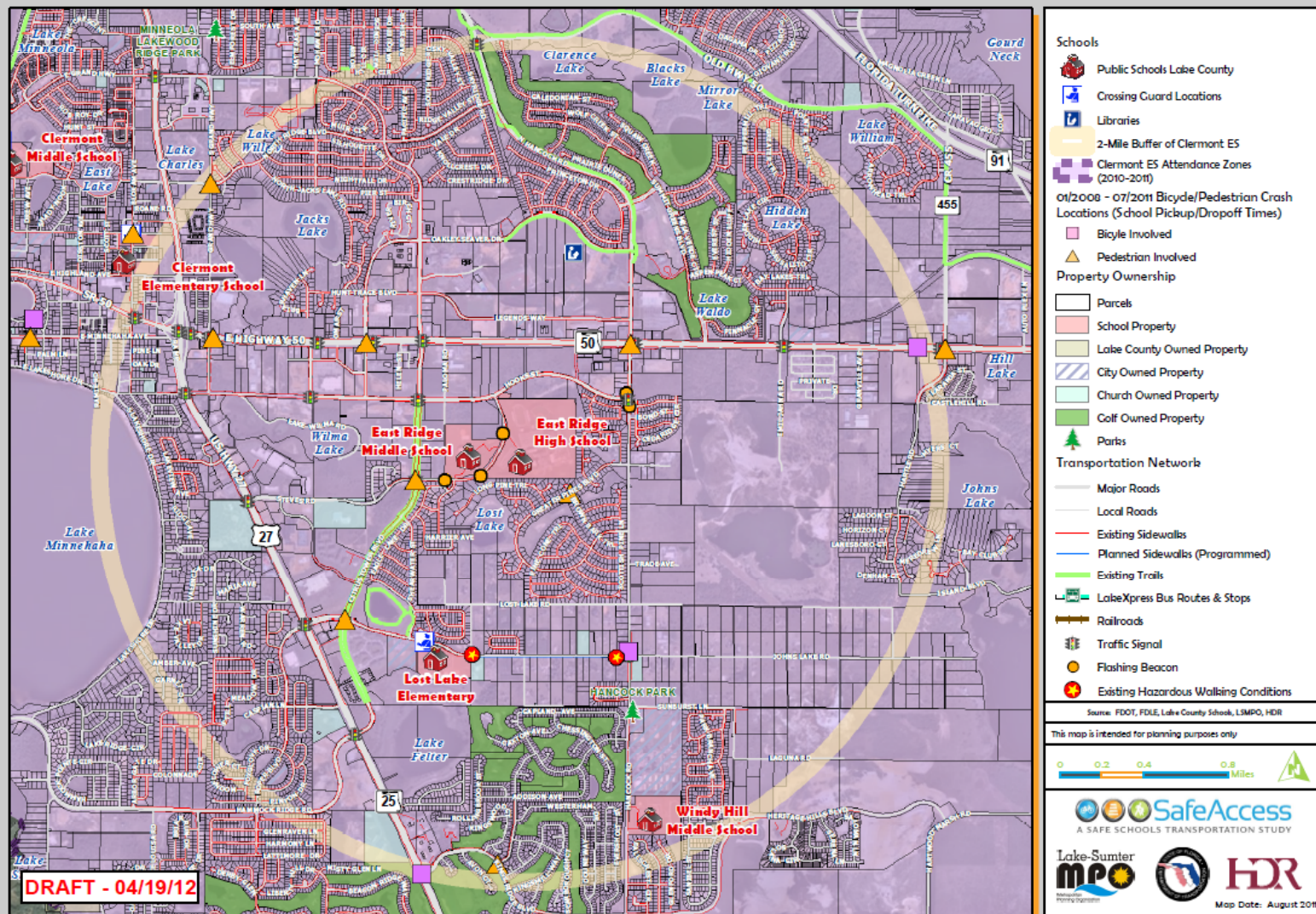
*Example neighborhood / school connection at Stenstrom ES, Oviedo, FL.*



*Location of potential new sidewalk connection to front of ERHS*

## East Ridge High School

### East Ridge High School: Existing Conditions Map



DRAFT - 04/19/12

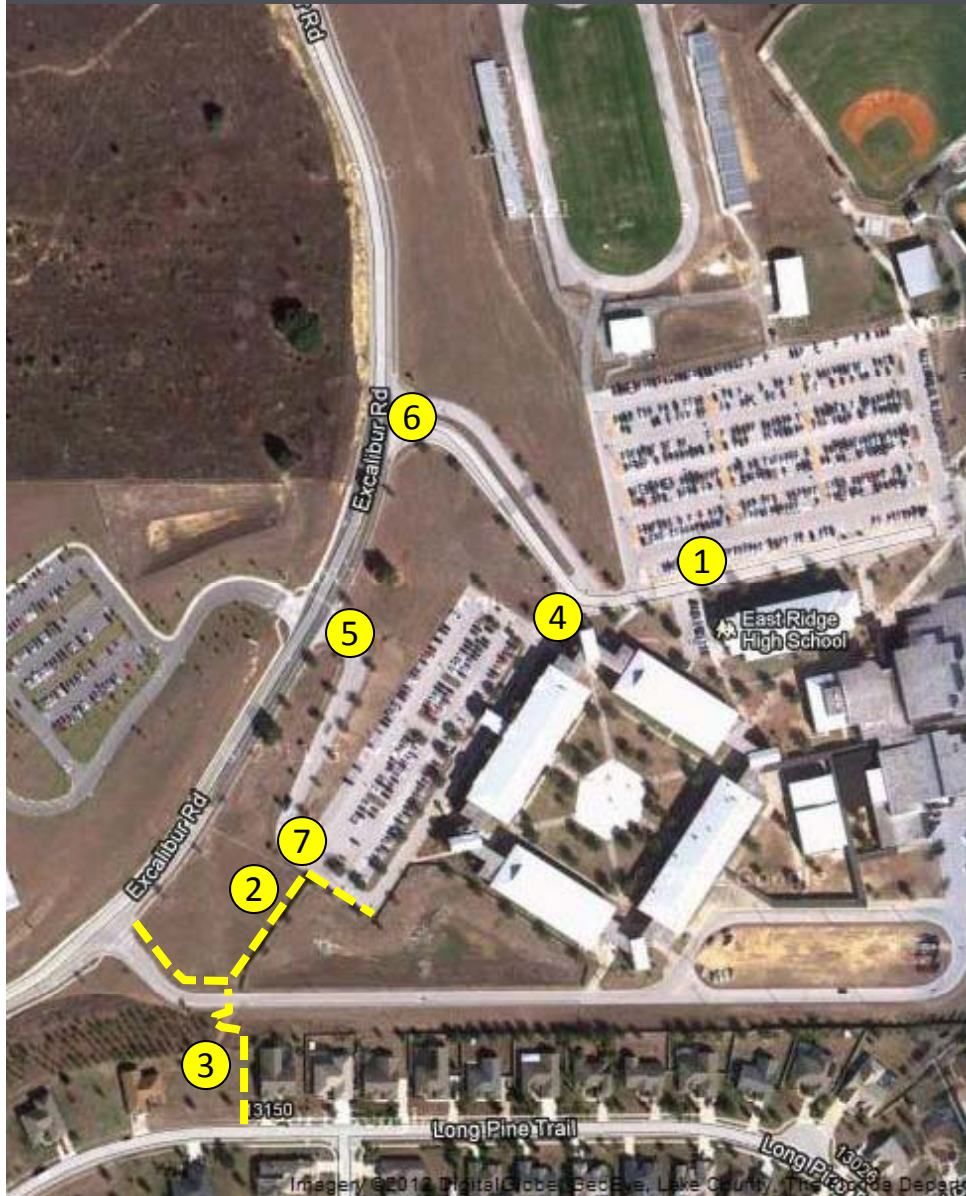


**SafeAccess**

A SAFE SCHOOLS TRANSPORTATION STUDY

## East Ridge High School

# Recommended Priority Projects



### Priority Projects:

1. Student parking lot accessibility improvements
2. New south sidewalk connection from Excalibur Rd at bus loop to front of school
3. Formalize pedestrian connection to Long Pine Trail
4. North walk access curb ramps & crosswalk
5. Restrict exiting traffic to right-out only at main school driveway (drop-off/pick-up area)
6. Modifications to student parking access driveway at Excalibur Rd
7. Improvements to main school driveway/parking lot at bottom of hill

# Priority Project #1

## Student Parking Lot Accessibility Improvements



### Findings:

- ✓ Student parking lot has 2 handicap parking spaces but no ramp is provided to sidewalk at these spaces; however, there is a ramp a few spaces down the same row of parking

### Recommendations:

- ✓ Restripe portion of closest student parking row to school to locate handicap spaces on either side of existing curb ramp; this change would be less costly than constructing a new curb ramp at the existing handicap spaces



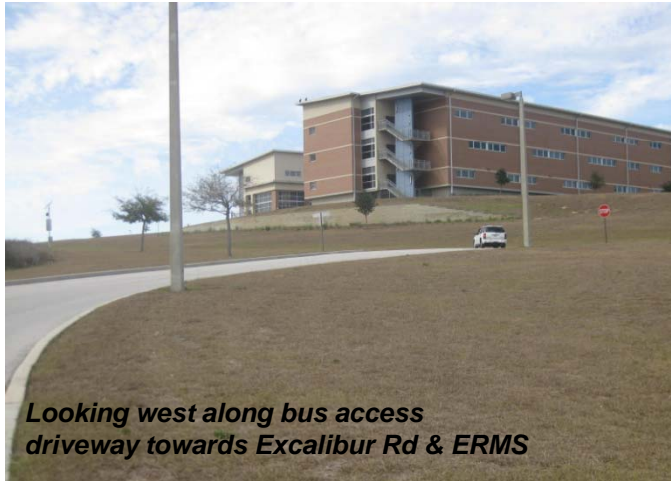


A SAFE SCHOOLS TRANSPORTATION STUDY

## East Ridge High School

# Priority Project #2

## New South School Sidewalk Connection



*Looking west along bus access driveway towards Excalibur Rd & ERMS*



*Looking north towards from bus access driveway toward school faculty parking lot*

### Findings:

- ✓ Walk/bike access to school is along the student parking lot driveway (northern most access point)
- ✓ Nearly all walkers observed coming from/going to the south/west
- ✓ Many walkers already using other more convenient routes without sidewalks (main school driveway, bus loop)
- ✓ Safety concerns & significant conflicts at the main school driveway in the PM

### Recommendations:

- ✓ Construct new sidewalk connection to front of school from Excalibur Rd at bus loop driveway



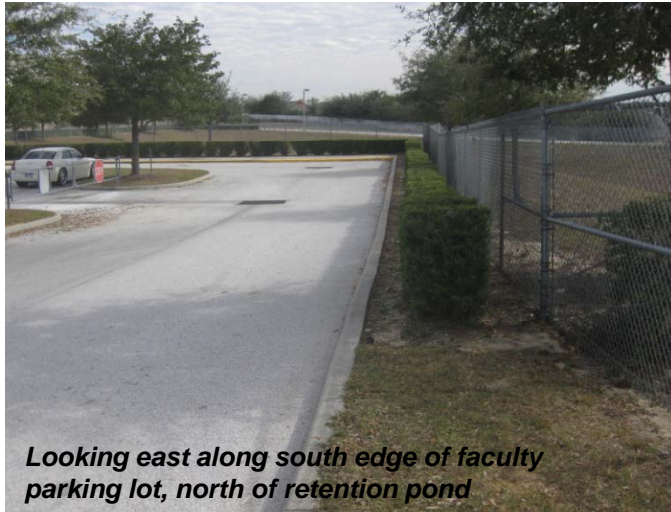


A SAFE SCHOOLS TRANSPORTATION STUDY

## East Ridge High School

# Priority Project #2

## New South School Sidewalk Connection



*Looking east along south edge of faculty parking lot, north of retention pond*



*Looking south from faculty parking lot towards bus access driveway*

### Issues:

- ✓ Only 5 feet of space available between back of curb & existing fence along north side of retention pond (6 feet is minimum sidewalk width at back of curb); would require fence to be moved towards the retention pond & existing hedge to be removed
- ✓ Would require new gate to be cut in fence along south side of faculty parking lot for sidewalk access
- ✓ Sidewalk alignment would still require walkers to cross the bus access driveway at Excalibur Rd (although no conflicts observed at this location)



A SAFE SCHOOLS TRANSPORTATION STUDY

## East Ridge High School

# Priority Project #3

## Formalize Pedestrian Connection to Long Pine Trail



### Findings:

- ✓ Would provide a formal connection from neighborhood with highest number of walkers
- ✓ Existing informal pathway is already being used by numerous students to connect to Greater Pines neighborhood
- ✓ Pathway is across the east side of a large occupied lot; a “Private Property No Trespassing” sign is posted
- ✓ Would connect to proposed new sidewalk from bus loop driveway at Excalibur Rd to front of school

### Recommendations:

- ✓ Evaluate purchase of easement from Greater Pines homeowner to provide formal connection to school from Long Pine Trail





A SAFE SCHOOLS TRANSPORTATION STUDY

East Ridge High School

## Priority Project #3

### Formalize Pedestrian Connection to Long Pine Trail



#### Issues:

- ✓ Would likely require purchase of a minimum 10-foot wide easement from property owner (6-foot sidewalk with 2-foot buffer on each side)
- ✓ Will need to evaluate how best to “formalize” the connection
  - ✓ Keep unpaved vs. constructing new sidewalk
  - ✓ Reconfigure pathway with switchback to meet ADA
  - ✓ Potential use of fencing along pathway
  - ✓ Address security concerns, especially if pathway is fenced and has switchbacks
- ✓ Would need to stripe crosswalk across bus access driveway
- ✓ Formalizing pathway may increase remote pick-up activity on Long Pine Trail





*Looking west along student parking lot driveway*



*Looking north from faculty parking lot towards area with missing curb ramp & crosswalk*

### Findings:

- ✓ No curb ramp or marked crosswalk provided along the existing walkers access sidewalk immediately adjacent to front of school

### Recommendations:

- ✓ Construct missing curb ramps and mark crosswalk



# Priority Project #5

## Main School Driveway Traffic Turning Restrictions



### Findings:

- ✓ Numerous conflicts observed at driveway exit in PM
- ✓ Safety hazard for walkers who cross this driveway & often have to negotiate through queued vehicles
- ✓ Sight distance for left turns out onto Excalibur Rd is limited due to queuing
- ✓ Hooks St & Citrus Tower Blvd connect to Excalibur Rd which provides close parallel facilities for circulation

### Recommendations:

- ✓ Restrict exiting traffic at pick-up area to right turns out only with channelizing island at driveway & signage
- ✓ Also consider restricting entering traffic to right turns only

### Issues:

- ✓ Right-out only traffic may potentially increase conflicts with traffic at student parking lot driveway
- ✓ Right-in only traffic may increase conflicts with exiting bus traffic



A SAFE SCHOOLS TRANSPORTATION STUDY

East Ridge High School

## Priority Project #6

### Student Parking Lot Driveway at Excalibur Rd



#### Findings:

- ✓ Student parking exit gate is closed in AM and entrance gate is closed in PM to discourage parent drop-off/pick-up at student parking access driveway
- ✓ Student parking driveway has excess space at Excalibur Rd which results in significant amount of drop-off activity in AM and modest amount of pick-up activity in PM

#### Recommendations:

- ✓ Extend median island further out towards roadway to further discourage drop-off/pick-up activity at this location
- ✓ Stripe crosswalk behind median nose (helps control speed of turning vehicles and provides safer pedestrian crossing)
- ✓ Consider periodic enforcement of remote drop-off or having resource officer park vehicle at closed entrance or exit



#### Issues:

- ✓ Improvement could result in more drop-off/pick-up activity directly on Excalibur Rd or move the issue to another location

# Priority Project #7

## Main School Driveway/Parking Lot Improvements



### Findings:

- ✓ There is a tight corner at the bottom of the hill on the main school driveway, which can result in conflicts between entering & exiting vehicles

### Recommendations:

- ✓ Add center line striping and reflective pavement markers (RPMs) to provide positive guidance for both entering & exiting vehicles through turn; make entering lane (11 feet) narrower than exiting lane (13 feet) to help facilitate right turn
- ✓ Consider trimming corner of curbing at western-most parking row to enlarge turning radius





A SAFE SCHOOLS TRANSPORTATION STUDY

East Ridge High School

# Transportation Access Master Plan





East Ridge High School

## Contact Information

This website represents an ongoing commitment to increase safe access to schools within the Lake~Sumter Metropolitan Planning Organization Planning Area.

Updates to data, and suggestions for programming and project ideas are welcome from all agencies and the general public.

**Mike Woods**

Project Manager, Transportation Planner

(352) 315-0170

[mwoods@lakesumtermpo.com](mailto:mwoods@lakesumtermpo.com)



**Mindy Heath, AICP**

Consultant Project Manager

(407) 420-4200

[Mindy.heath@hdrinc.com](mailto:Mindy.heath@hdrinc.com)



*Promoting Regional  
Transportation Partnerships*