



A SAFE SCHOOLS TRANSPORTATION STUDY

Tavares Middle School

Tavares, FL

5 LANE PARK
CUTOFF

TAVARES MIDDLE SCHOOL

DRAFT

May 2013



Tavares Middle School Snapshot

December 18, 2012

Grades: 6th – 8th

Total Students: 1,023

- Provided Bus Transportation : 821
- Not Provided Bus Transportation: 202
- Buses Assigned to School (23 reg, 6 ESE) 29

Students Living within the “Walk Zone”: 84

- Provided Bus Transportation: 59
- Not Provided Bus Transportation: 25

Observation Day (Sunny)

- Walkers: 10-15 (est)
- Bike Riders: 2



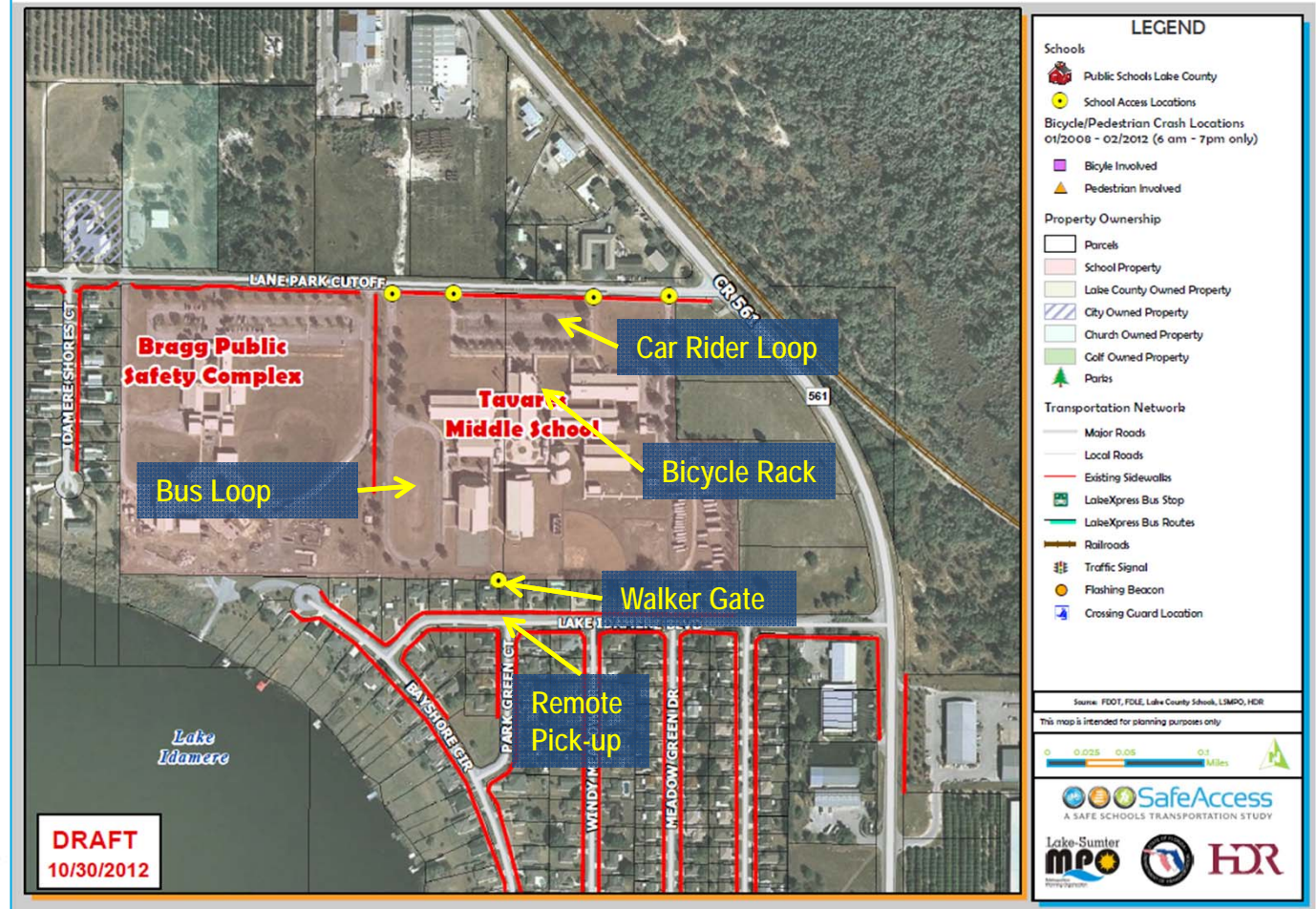
- ✓ Tavares Middle School website – Click [here](#)
- ✓ City of Tavares website – Click [here](#)
- ✓ Lake County Schools website – Click [here](#)

Tavares Middle School

Findings:

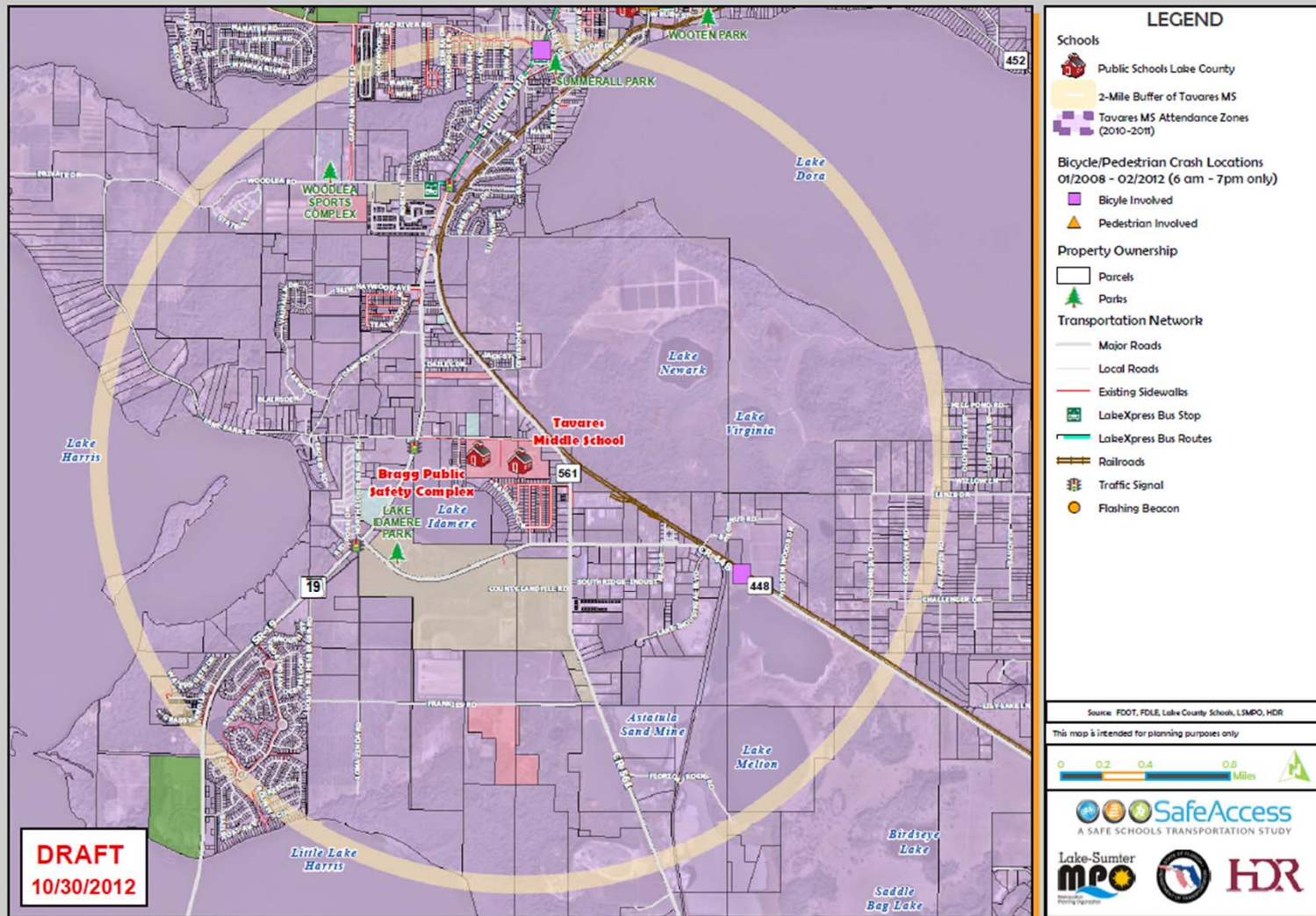
- ✓ Car queue backs up onto Lane Park Cutoff in PM; Vehicles do not block bus access
- ✓ Adequate storage on bus loop
- ✓ After care van (1) uses car line
- ✓ Walker gate opens at 8:55 AM
- ✓ Teacher supervision starts at 8:50 AM

Tavares Middle School: Student Access Location Map



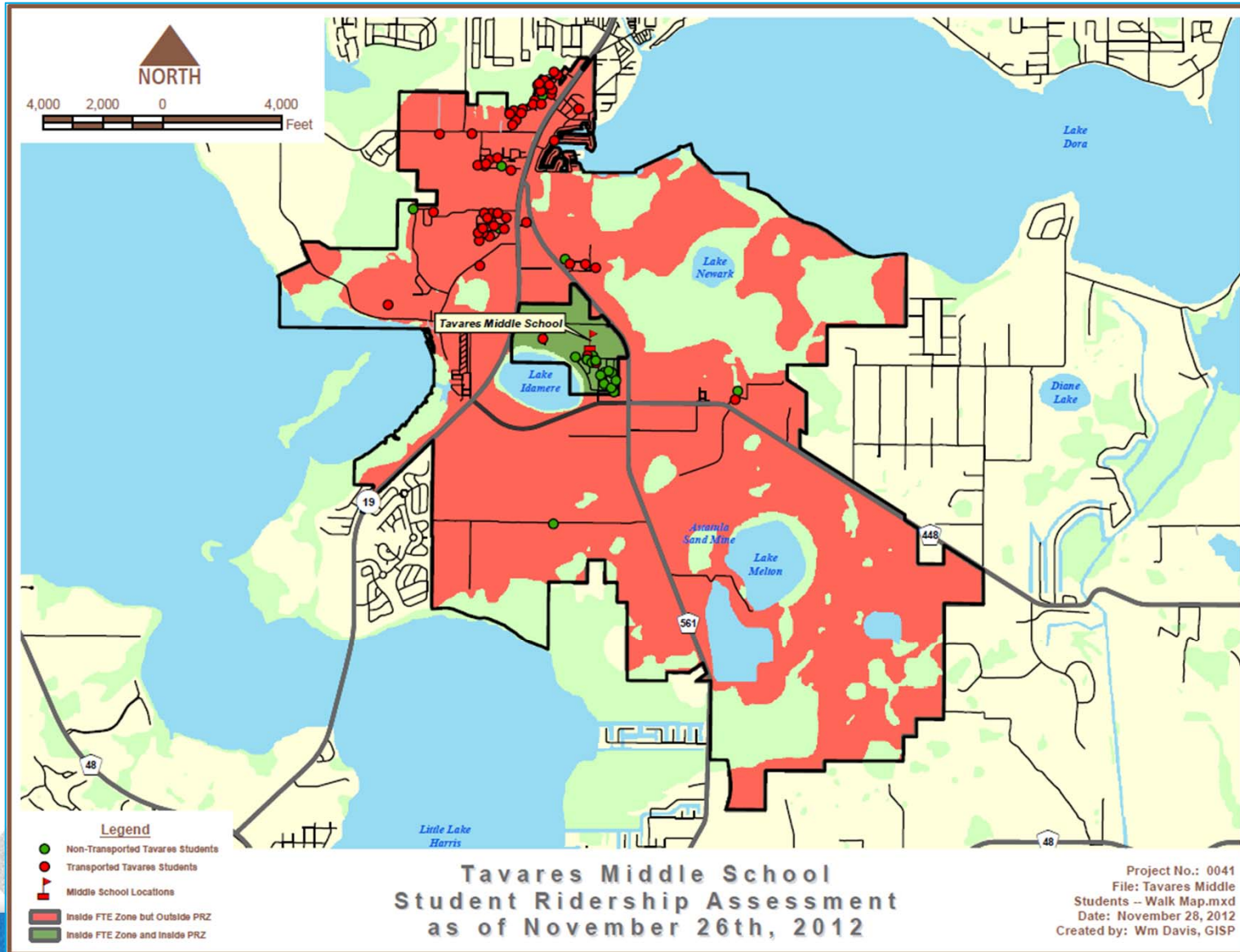
Attendance and 2-Mile "Walk" Zone Map

Tavares Middle School: Attendance and 2-Mile "Walk" Zone Map



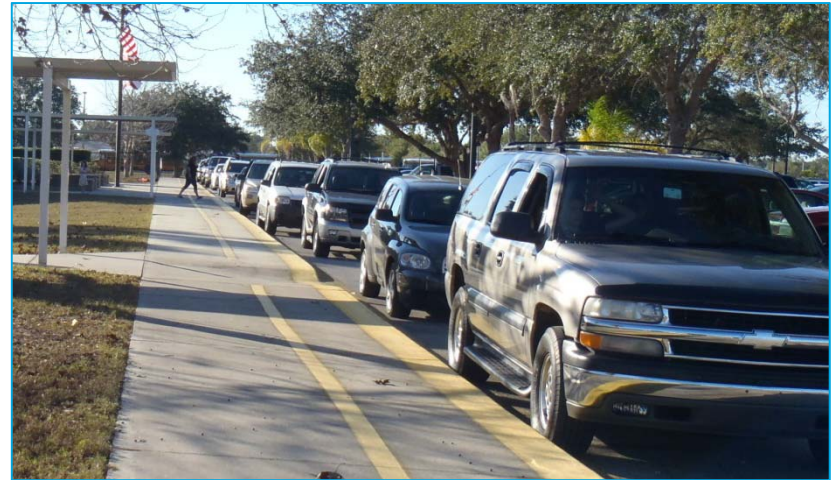
DRAFT
10/30/2012

Attendance and 2-Mile "Walk" Zone Map



Arrival and Dismissal Schedule

- 8:45 am:** Students arrive
- 8:50 am:** Teacher supervision begins
- 9:00 am:** Buses unload
- 9:15 am:** School Starts
- 3:40 pm:** Bus gate opened; Buses start to stage
- 4:00 pm:** Students released
- 4:25 pm:** Most students are off campus



Note: Students are released one hour early on Wednesdays



On-Site Storage



Queue Prior To Gate Opening



End of Bus Loading Area

Findings:

- ✓ 23 regular service buses and 6 ESE buses (29 total)
- ✓ Bus riders are staged in a courtyard by the bus ramp and released as buses arrive
- ✓ Buses do not arrive at the same time; Sufficient storage observed on site for staggered bus arrival
- ✓ Bus gate not opened until 3:40 PM – 8 buses queued prior to gate opening; Buses turn around in Big House parking lot to come into bus loop from East prior to gate opening
- ✓ Students load around bus loop to the end of the sidewalk
- ✓ Bus operations were observed to be well-run and efficient

Recommendations:

- ✓ Open bus gate earlier or coordinate with Big House to allow bus storage in parking lot until gates open

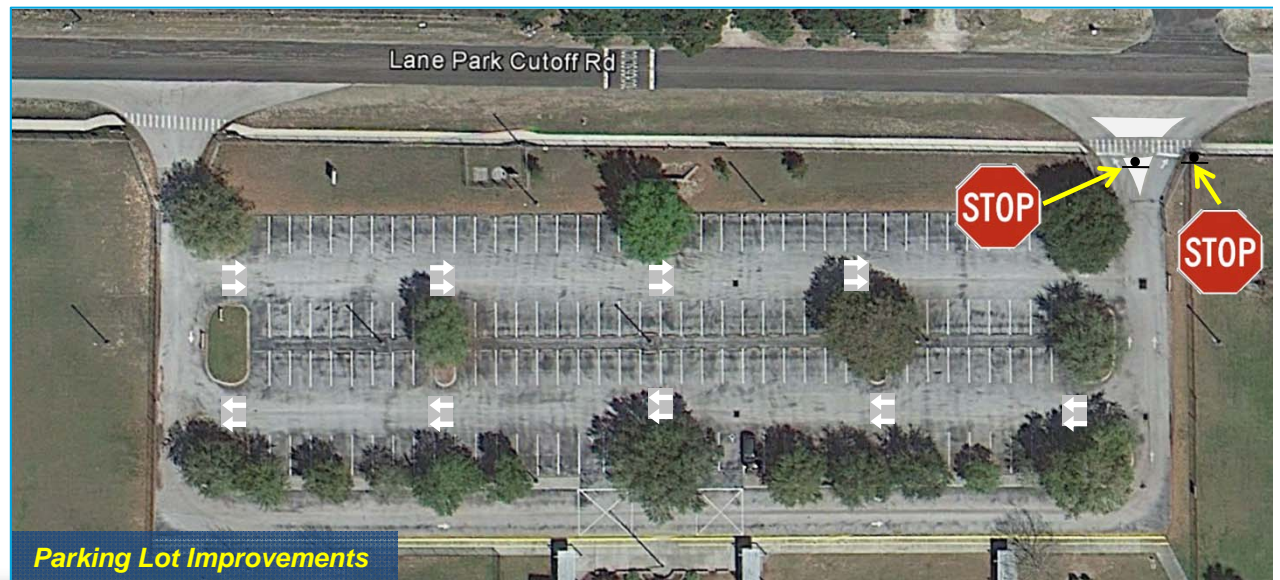
Findings:

- ✓ School has issue with students not wanting to wait on car ramp; Parents allow younger siblings to play outside car while waiting for school dismissal
- ✓ Car queue observed to back up onto Lane Park Cutoff; Vehicles do not block bus access
- ✓ Officers at the Bragg Public Safety Complex have complained about pick-up queue blocking driveway



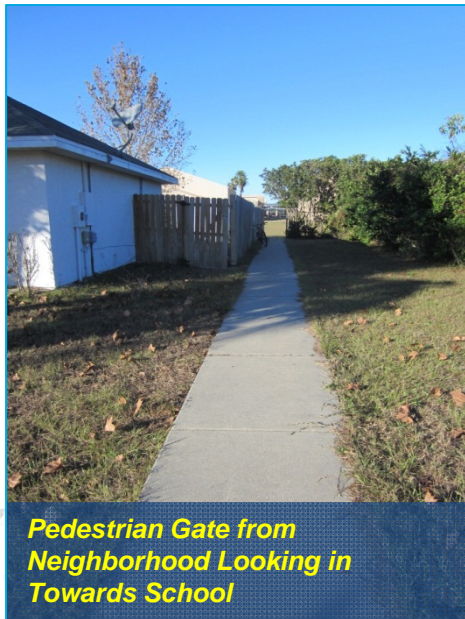
Recommendations:

- ✓ Install benches and walkway cover over pick-up / drop-off area to shelter waiting students from elements
 - ✓ Benches / low wall along backside of pick-up walkway might deter parents from allowing younger siblings to run around property
- ✓ Repaint parking lot to visually identify traffic flow internal to site
- ✓ Install stop sign at parking lot exit
- ✓ Replace chevron pavement paint at parking lot exit with concrete divider island (“porkchop”)
 - ✓ Would serve as traffic calming device and pedestrian refuge along front side of campus



Findings:

- ✓ School has received complaints about parents picking up on Lake Idamere Blvd behind the school by the back walker gate; Only one vehicle observed to wait there for a student in the afternoon





Findings:

- ✓ Most walkers and bike riders arrived on campus via the back gate
- ✓ Bicycle rack located by main office in grass
- ✓ 2 bikes found just outside back pedestrian gate
- ✓ No sidewalk connections into school from Lane Park Cutoff Rd
- ✓ Some student attend karate school on north side of Lane Park Cutoff Rd
- ✓ School anticipates aftercare program at The Big House once open

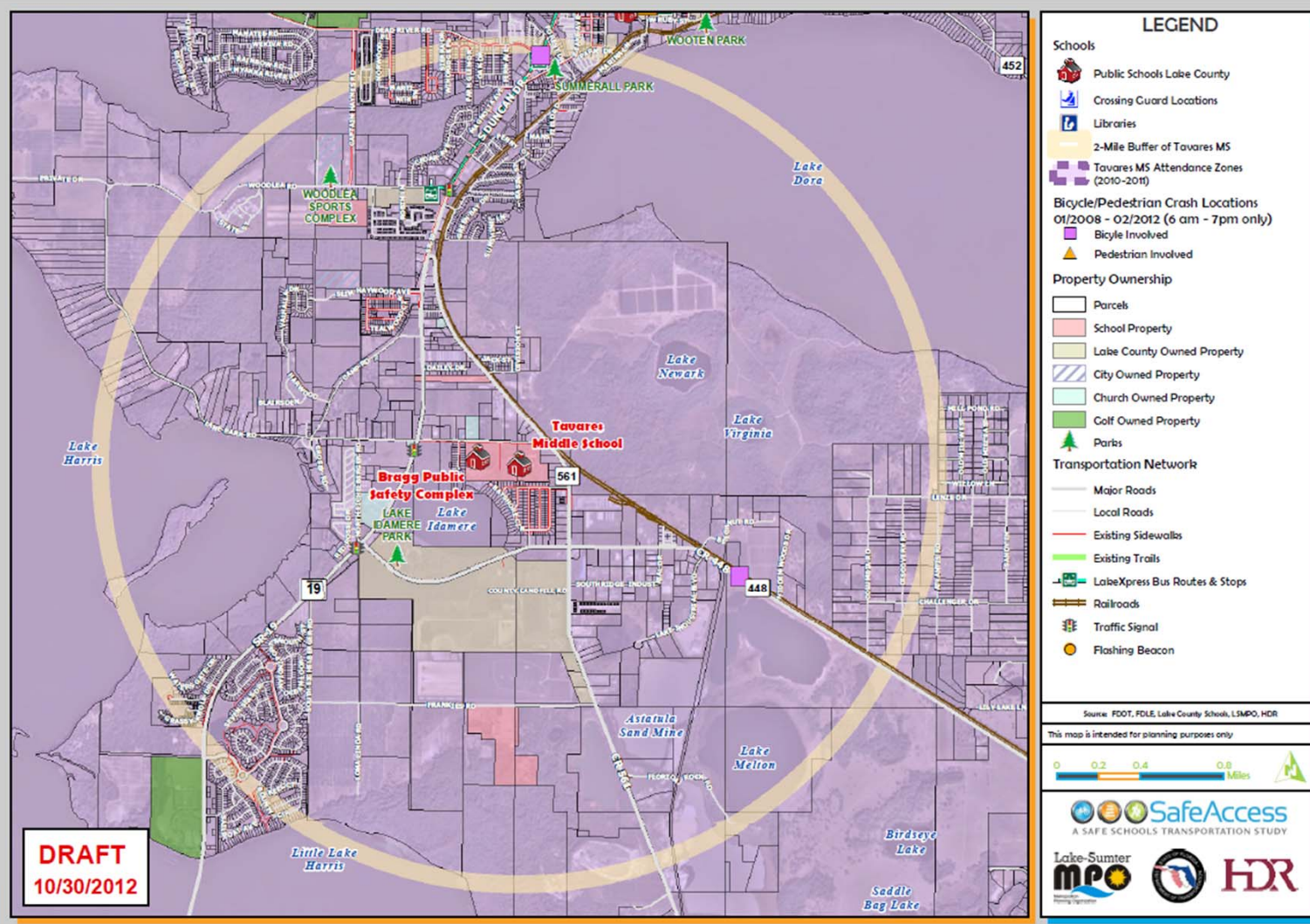
Recommendations:

- ✓ Relocate bicycle rack near back pedestrian gate
- ✓ Replace existing bicycle rack with inverted “U” or ribbon style bicycle rack; Construct a concrete pad for bicycle rack;
- ✓ Construct new sidewalk connections along both sides of car loop
- ✓ Construct new sidewalk on north side of Lane Park Cutoff Rd with crossing to karate school



Tavares Middle School

Tavares Middle School: Existing Conditions Map



Recommended Project List

Project Number	Roadway	Location	Project
1	At School	Car Loop Ramp	Install benches, trash cans, and awnings for car ramp students
2	At School	Car Loop	Construct new sidewalk along both side of car loop to Lane Park Cutoff Road
3	Lane Park Cutoff Rd	All School Driveways	Repaint crosswalks for car loop and bus loop / Extend island at Bus Loop to create refuge
4	At School	Bicycle Rack	Relocate bicycle rack; construct concrete pad and bike cage; install ribbon or inverted "U" style bike rack
5	Lane Park Cutoff Rd	CR 561 to The Big House	Add sidewalk on north side of road; Install mid-block crosswalk in front of karate school
6	At School	Car Loop	Expand front parking lot on west side and have cars enter / exit from bus loop driveway; Add new parking spaces for events



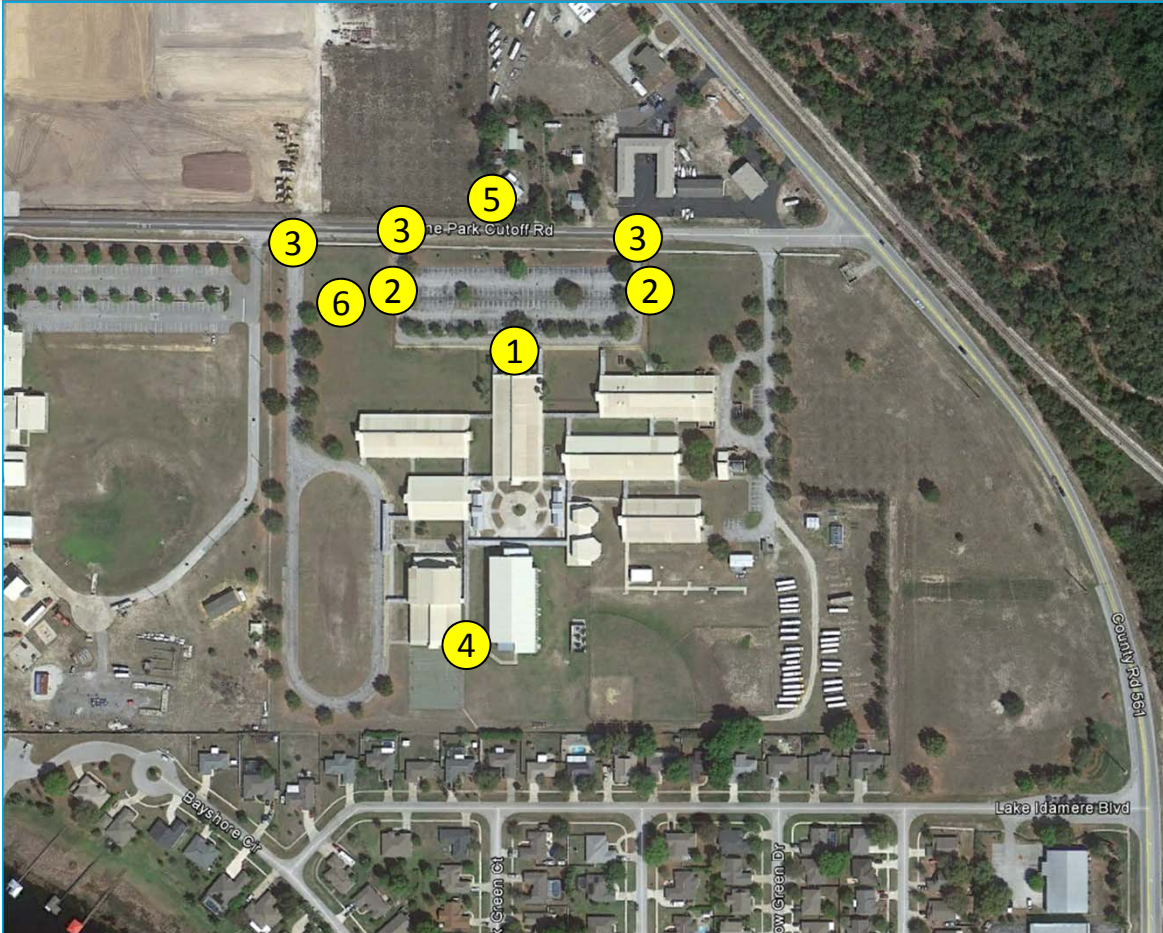


SafeAccess

A SAFE SCHOOLS TRANSPORTATION STUDY

Tavares Middle School

Recommended Priority Projects



Recommendations:

1. Improve car loop amenities for students
2. Construct car loop sidewalk connection to Lane Park Cutoff Rd
3. Repaint school driveway crosswalks
4. Relocate bike rack; install concrete pad and bike cage; replace bike rack with inverted "U" or ribbon style bike rack
5. Construct new sidewalk on north side of Lane Park Cutoff Rd from CR 561 to The Big House
6. Expand car loop parking toward bus loop to provide more on site storage / event parking

Recommended Project #1

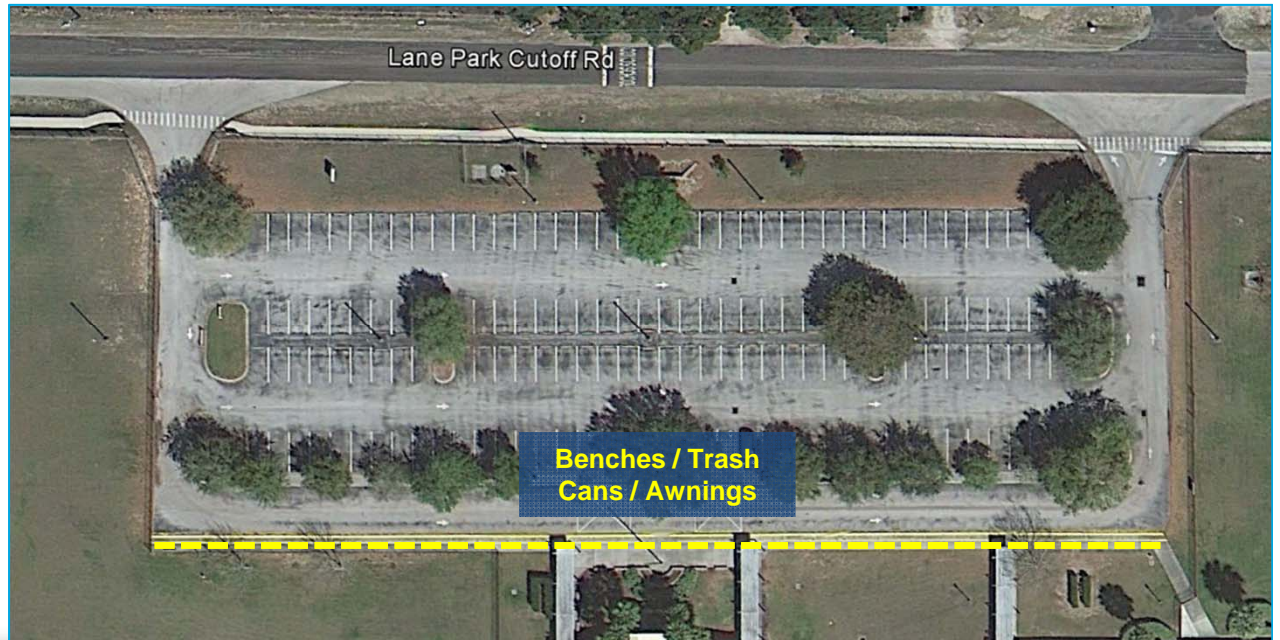
Improved Amenities on Car Loop Ramp

Recommendations:

- ✓ Install benches, trash cans, and awnings over pick-up / drop-off area to shelter waiting students from elements (approx. 490 ft)
 - ✓ Benches / low wall along backside of pick-up walkway could also deter parents from allowing younger siblings to run around property
 - ✓ Shelter and seating may increase appeal for students to wait for parents at the car loop
 - ✓ May improve vehicle queue on Lane Park Cutoff with reduced waiting times for parents



EXAMPLE: Cecil Gray Middle School with Covered Walkway, Benches, and Low Wall



Benches / Trash Cans / Awnings



A SAFE SCHOOLS TRANSPORTATION STUDY

Tavares Middle School

Recommended Project #2

Car Loop Sidewalk Connects

Recommendations:

- ✓ Construct new sidewalk on east and west sides of car loop / parking area to provide connects to existing Lane Park Cutoff Road sidewalk
 - ✓ Preferred sidewalk width of 8' (minimum sidewalk width of 5')
 - ✓ Would require relocation of existing fencing to provide space for new sidewalks





A SAFE SCHOOLS TRANSPORTATION STUDY

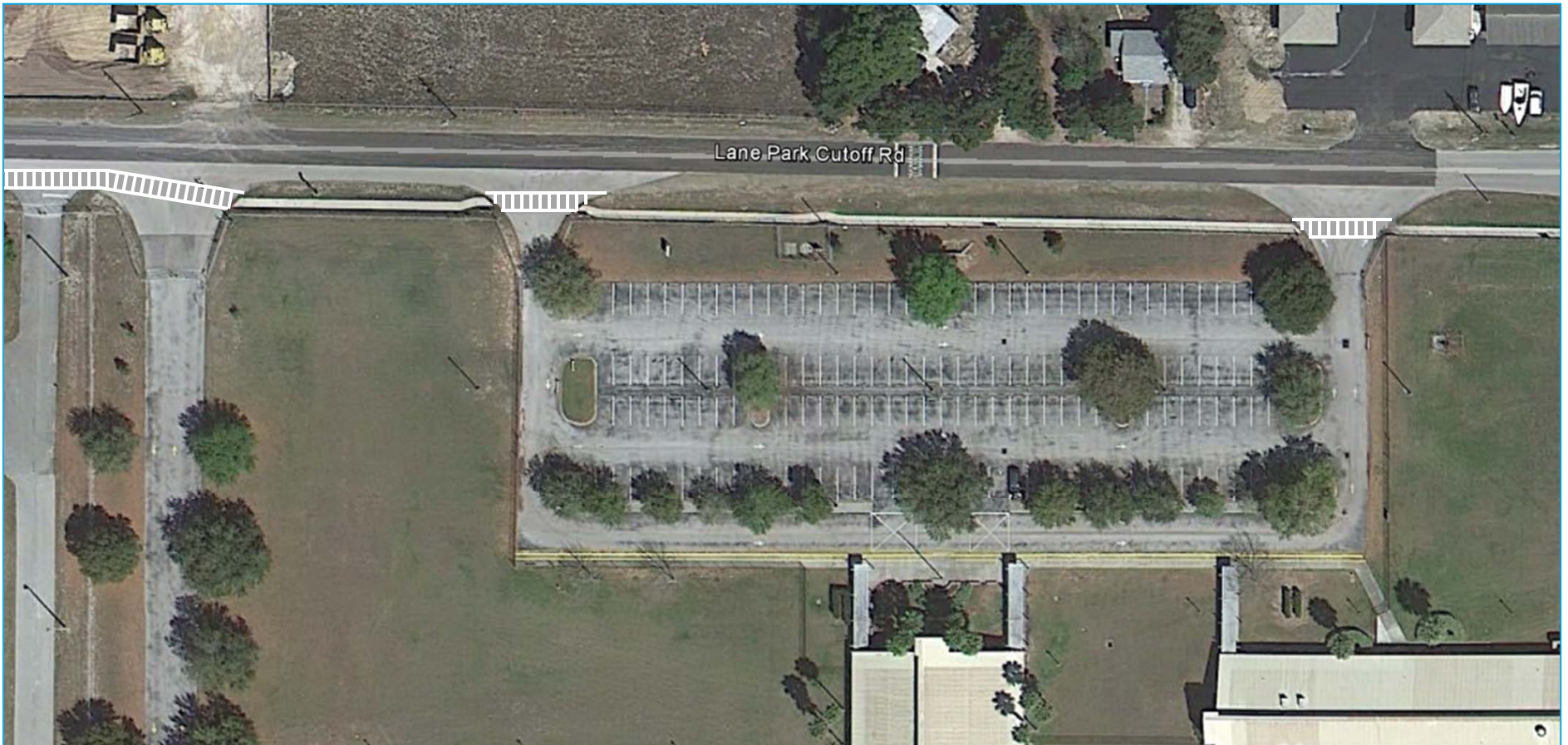
Tavares Middle School

Recommended Project #3

Repaint School Crosswalks / Extend Island at Bus Loop

Recommendations:

- ✓ Repaint crosswalks as high visibility ladder style at all school driveways;





A SAFE SCHOOLS TRANSPORTATION STUDY

Tavares Middle School

Recommended Project #3

Repaint School Crosswalks / Extend Island at Bus Loop

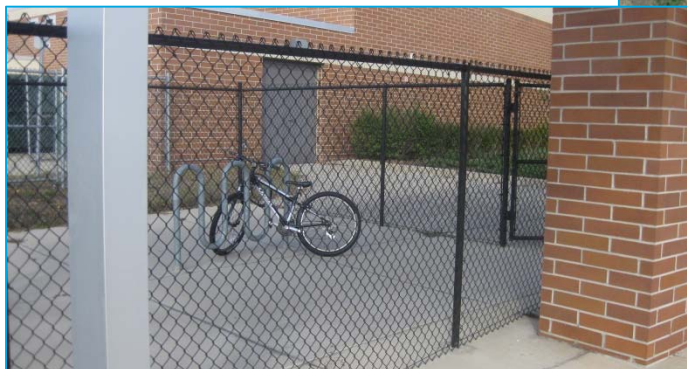
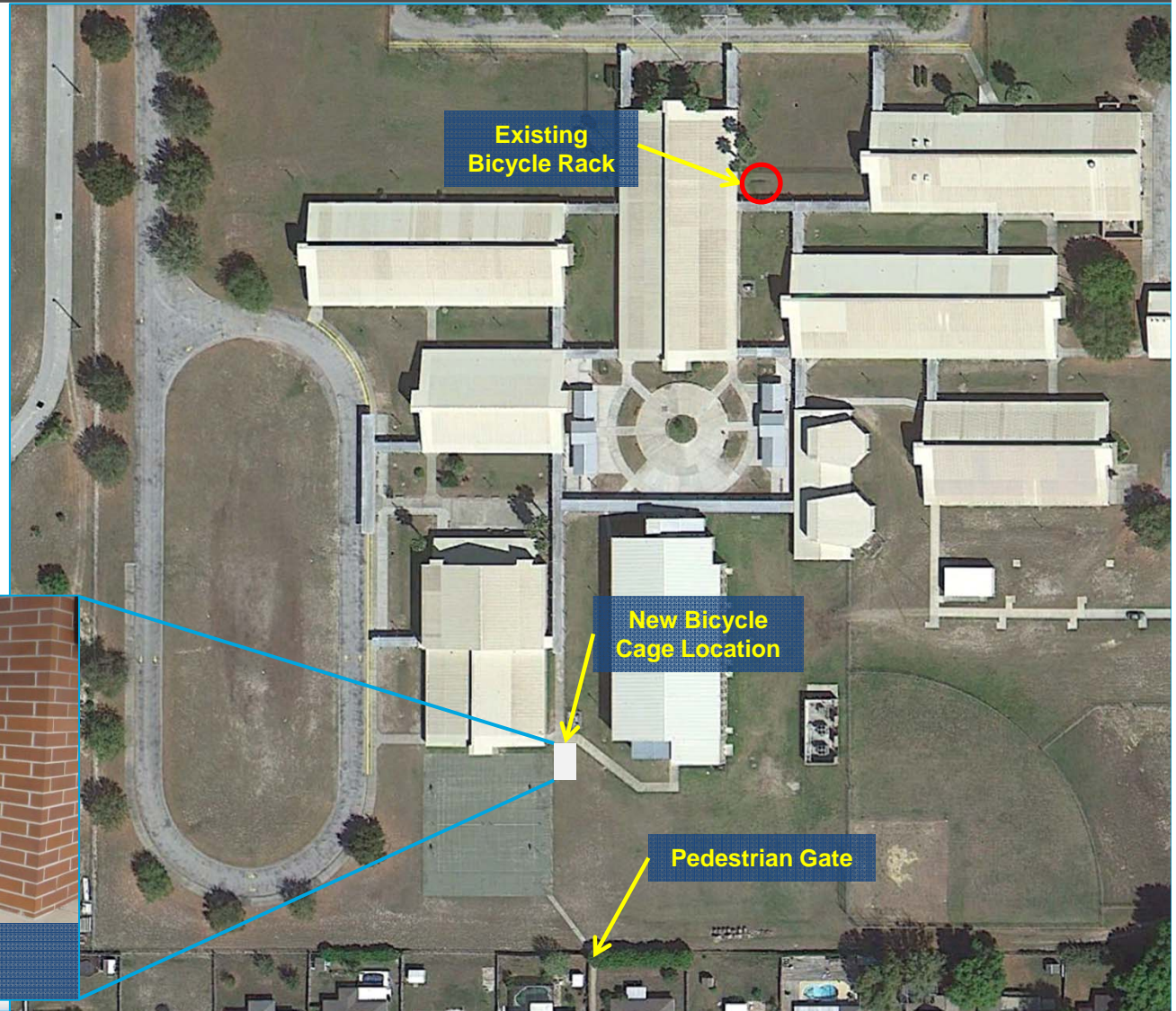
Recommendations:

- ✓ Extend Island between bus loop and Public Safety Complex to separate driveways and create pedestrian refuge
- ✓ Realign sidewalk and crosswalks



Recommendations:

- ✓ Relocate bicycle rack to back of school closer to pedestrian gate
- ✓ Replace bicycle rack with inverted “U” or ribbon style bicycle rack
- ✓ Install bike cage to secure bikes during school
- ✓ Construct concrete pad



EXAMPLE: East Ridge Middle School Secure Bicycle Parking with Ribbon Style Bike Rack



A SAFE SCHOOLS TRANSPORTATION STUDY

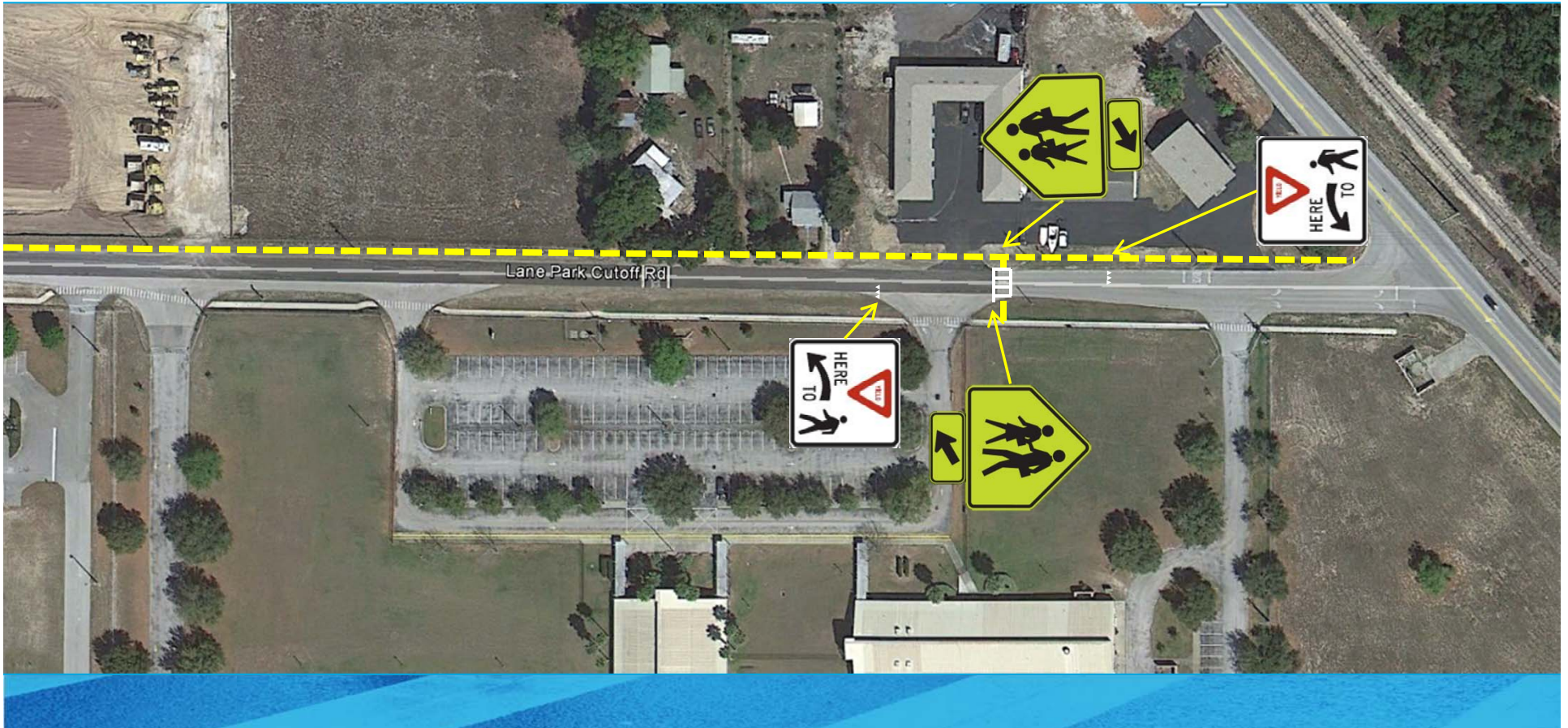
Tavares Middle School

Recommended Project #5

Construct Lane Park Cutoff Road Sidewalk

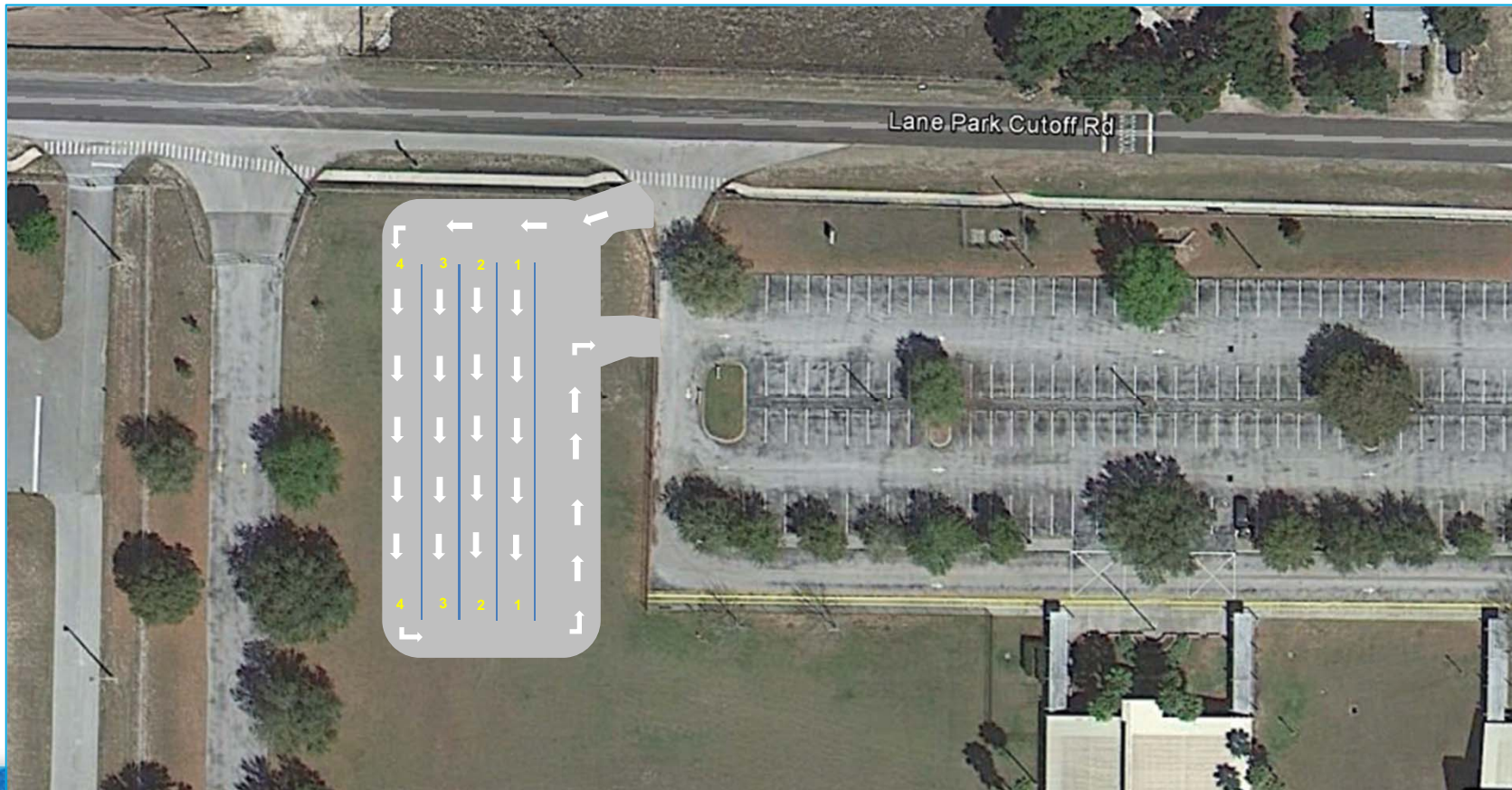
Recommendations:

- ✓ Add sidewalk on north side of Lane Park Cutoff Road from CR 561 to The Big House
- ✓ Install mid-block crosswalk to Karate School on north side of road



Recommendations:

- ✓ Add pull through queue space – 4 rows, after lot is full, cars queue in rows starting with 1 through 4 then pull forward back into lot beginning with row 1, a similar queue is used at Lost Lake ES and is pictured on the next page, may require staff to direct traffic.





A SAFE SCHOOLS TRANSPORTATION STUDY

Tavares Middle School

Recommended Project #6

Expand Car Loop

Recommendations:

- ✓ Similar approach at Lost Lake ES



Lost Lake Elementary School

Other Recommendations

Roadway	From/To	Project
CR 448	CR 561 to Lake Industrial Blvd	Add sidewalks on both sides
CR 561	SR 19 to Lake Park Cutoff Rd	Add sidewalk on both sides
SR 19	CR 561 to Oak Bend subdivision	Add sidewalk on west side





A SAFE SCHOOLS TRANSPORTATION STUDY

Tavares Middle School

Other Sidewalk Project

CR 448 Sidewalk

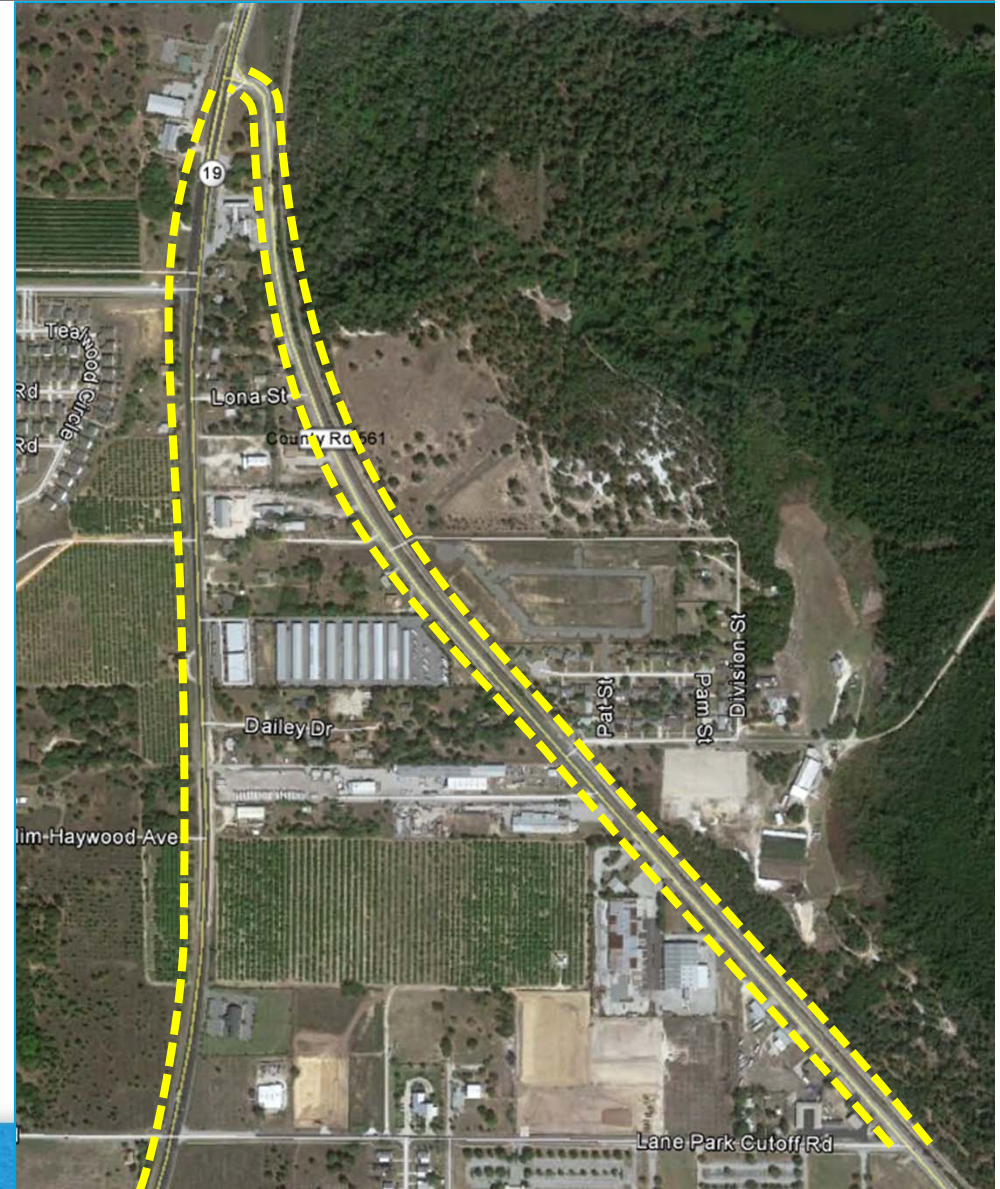
Recommendations:

- ✓ Add sidewalk on both sides of CR 448 from CR 561 to Lake Industrial Blvd



Recommendations:

- ✓ Close sidewalk gaps on both sides of CR 561 and extend from SR 19 to Lane Park Cutoff Rd
- ✓ Add sidewalk on west side of SR 19 from CR 561 to Oak Bend subdivision
 - ✓ Coordinate with SR 19 Future Plans Project





Tavares Middle School

Contact Information

This website represents an ongoing commitment to increase safe access to schools within the Lake~Sumter Metropolitan Planning Organization Planning Area.

Updates to data, and suggestions for programming and project ideas are welcome from all agencies and the general public.

Mike Woods

Project Manager, Transportation Planner

(352) 315-0170

mwoods@lakesumtermpo.com



Mindy Heath, AICP

Consultant Project Manager

(407) 420-4200

Mindy.heath@hdrinc.com



*Promoting Regional
Transportation Partnerships*