

Astatula Elementary School

Astatula, FL

DRAFT

May 2013

HDR

Astatula Elementary School Snapshot

November 28, 2012

Grades: Pre-K – 5th

Total Students: 616

- Provided Bus Transportation : 367
- Not Provided Bus Transportation: 249
- Buses Assigned to School (8 reg, 4 ESE) 12

Students Living within the “Walk Zone”: 173

- Provided Bus Transportation: 83
- Not Provided Bus Transportation: 90

Observation Day (Sunny)

- Walkers: 14
- Bike Riders: 2

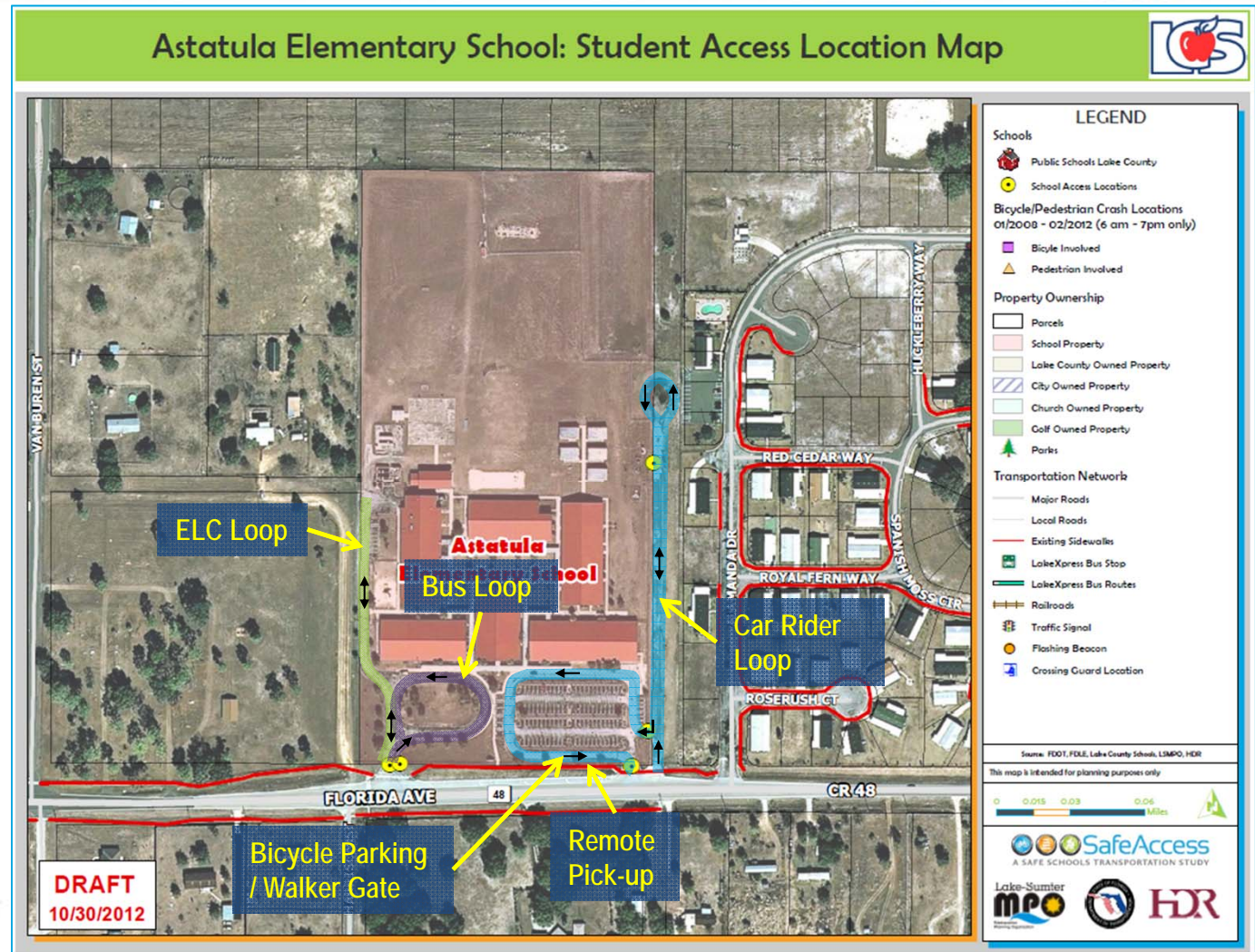


- ✓ Astatula Elementary School website – Click [here](#)
- ✓ Town of Astatula website – Click [here](#)
- ✓ Lake County Schools website – Click [here](#)

Astatula Elementary School

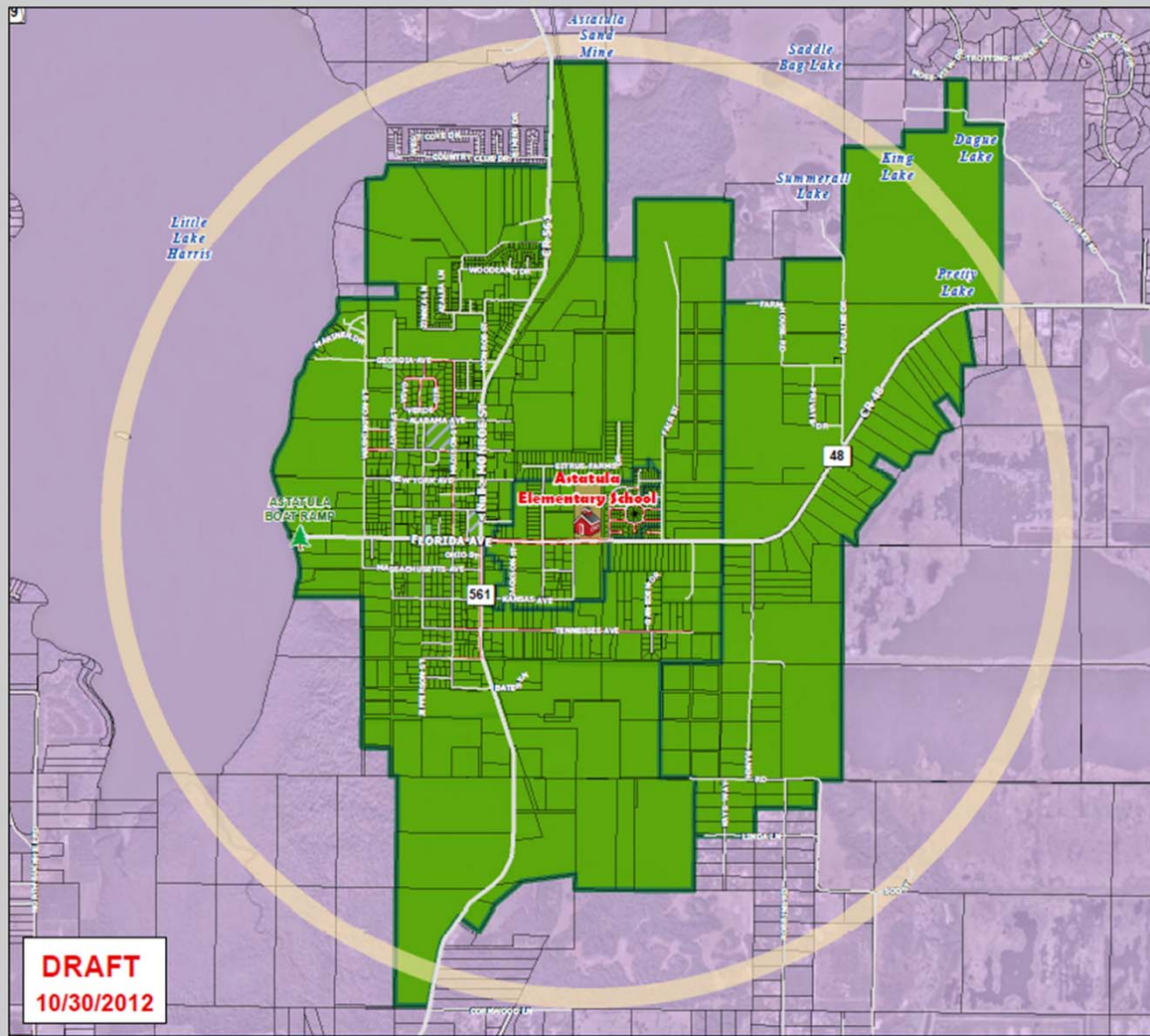
Findings:

- ✓ Bus loop separated from drop-off/pick-up
- ✓ Daycare vans use the car loop
- ✓ Car and bus loops were very efficient for both drop-off and pick-up
- ✓ Campus gates open at 8:00 AM
- ✓ All pedestrians must access school from pedestrian gate off Florida Ave
- ✓ Approximately 14 staff members monitor arrival / dismissal (12 staff; 2 principals)



Attendance and 2-Mile "Walk" Zone Map

Astatula Elementary School: Attendance and 2-Mile "Walk" Zone Map



LEGEND

Schools

- Public Schools Lake County
- 2-Mile Buffer of Astatula ES
- Parent Responsibility Zone
- Special Exception Areas
- Astatula ES Attendance Zones (2010-2011)

Bicycle/Pedestrian Crash Locations 01/2008 - 02/2012 (6 am - 7pm only)

- Bicycle Involved
- Pedestrian Involved

Property Ownership

- Parcels
- Parks

Transportation Network

- Major Roads
- Local Roads
- Existing Sidewalks
- LakeXpress Bus Stop
- LakeXpress Bus Routes
- Railroads
- Traffic Signal
- Flashing Beacon

Source: FDOT, FDLE, Lake County Schools, LSMPO, HDR

This map is intended for planning purposes only

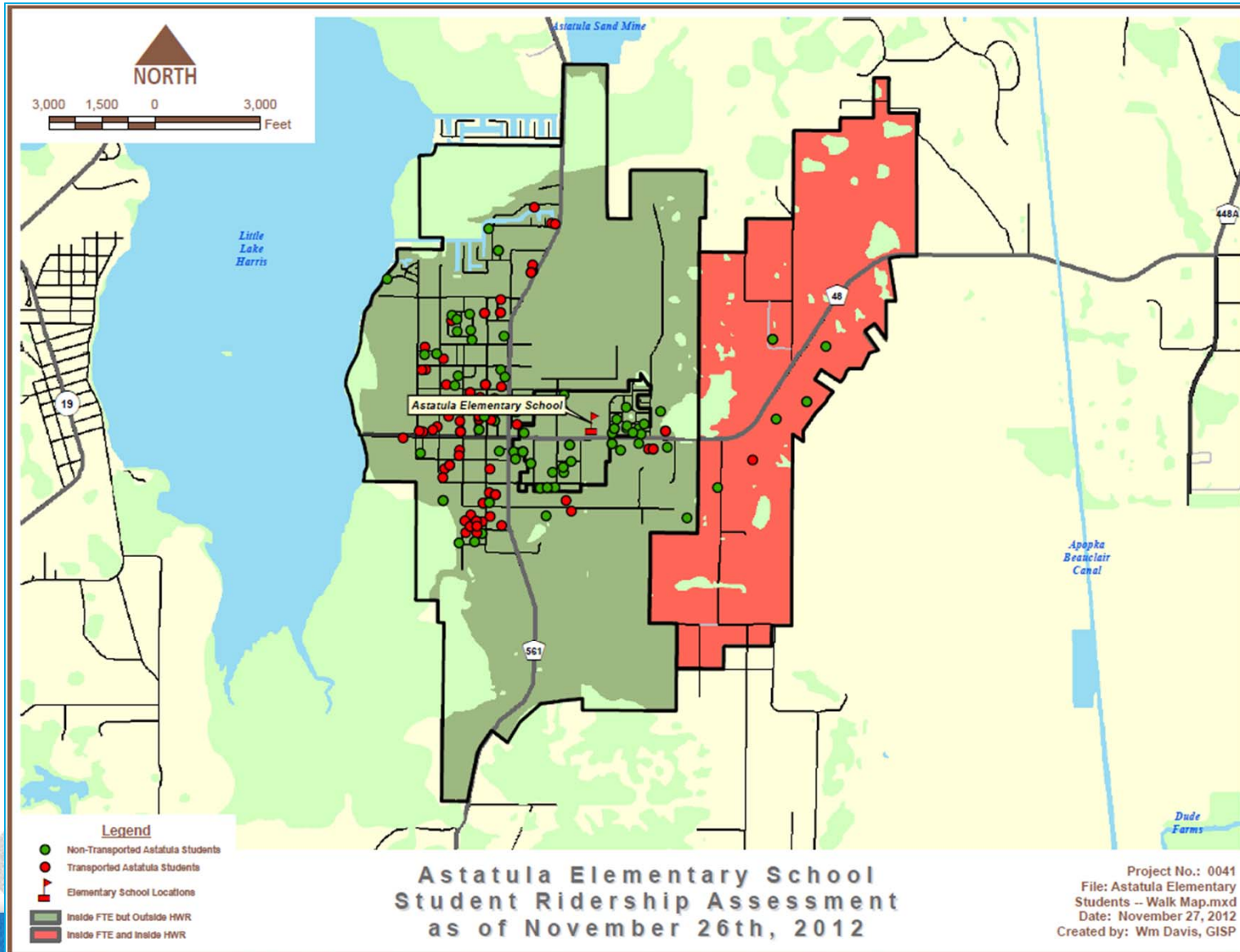
DRAFT
10/30/2012



A SAFE SCHOOLS TRANSPORTATION STUDY

Astatula Elementary School

Attendance and 2-Mile "Walk" Zone Map



Arrival and Dismissal Schedule

- 7:00 am:** Breakfast / ELC
- 8:00 am:** Gates are opened; Supervision for student arrival starts
- 8:35 am:** School start time
- 3:00 pm:** Pre-K and K students released
- 3:05 pm:** School end time; Staggered release – walkers / bike riders, then car riders; Bus riders released as buses arrive
- 6:00 pm:** ELC ends



Note: Students are released one hour early on Wednesdays



Findings:

- ✓ 8 regular service buses and 4 ESE buses (12 total)
- ✓ Bus riders are released as buses arrive; About 3 or 4 buses loaded at a time; Students can only be loaded where the curb is painted yellow
- ✓ Buses do not arrive at the same time; Sufficient storage observed on site for staggered bus arrival; Earliest buses attempt to line up in same order every day
- ✓ Bus operations were observed to be well-run and efficient

Student Drop-off & Pick-up

Findings:

- ✓ City allows school to use adjacent parcel for car queue
- ✓ Students may only be loaded / unloaded from cars where sidewalk is painted yellow
- ✓ AM drop-off starts about 10 minutes before 8 AM; PM queue starts about 30 minutes before school ends
- ✓ No vehicle conflicts or queue observed on Florida Ave
- ✓ 1 staff member monitors traffic at the parking gate to deter “cutters”; Staff will allow PM vehicles to “jump” the queue in order to park
- ✓ Several parents observed to back in and park in handicap spaces before school lets out; No vacant handicap spaces by school dismissal
- ✓ Safety patrol utilized to keep students on / near benches



Student Drop-off & Pick-up

Findings:

- ✓ Pre-K and kindergarten is typically released 5 minutes early so staff can get them seated on benches
- ✓ Several parents observed to park and have students walk to parking lot; School moved crosswalk to end of car ramp and place a staff member to help get students to parking lot; Crosswalk is very worn after 1 year of use and accesses sidewalk via a former handicap parking space
- ✓ School has received funding to install gates along car pick-up; Gates will consist of fencing with openings for students to load / unload from vehicles; Currently ID “gates” with numbers on posts
- ✓ Overall arrival and dismissal was observed to work efficiently with no queue backup on Florida Ave and most students gone within 15 minutes of dismissal



Existing “Gates”



Parents Using Handicap Parking for Pick-up



Students Crossing to Parked Parents

Recommendations:

- ✓ Enforce policy requiring parents to line up outside of car gate until dismissal; Use cones to discourage “cutting” the line; Parents requesting to park should be encouraged to use most direct parking spaces
- ✓ Repaint / stripe car loop as one way including exit; Repaint crosswalk at car loop exit with high visibility ladder style crosswalk
- ✓ Install gates along pick-up / drop-off area
- ✓ Install upgraded detectable warning mats on all ramps
- ✓ Upgrade designated crosswalk with durable material (i.e. colored stamped concrete)



Remote Drop-off & Pick-up

Findings:

- ✓ 2 parents observed to park along travel lanes near car loop exit and wait for students
- ✓ 1 parent observed to pick up student from shoulder of Florida Ave just outside pedestrian access gate

Recommendations:

- ✓ Install “No Stopping, Standing, or Parking” signage along Florida Avenue from Alamanda Drive to Harrison Street

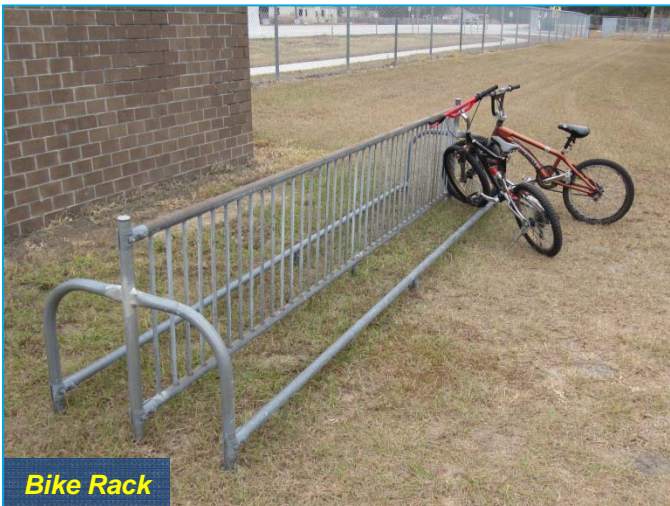




Vehicles Stopped for Pedestrians on Florida Ave

Findings:

- ✓ Cars / buses observed to stop for pedestrians crossing Florida Ave at Harrison St during AM; Police car monitors traffic at this intersection during PM
- ✓ Small sidewalk gap located on entrance of bus loop at Florida Ave
- ✓ Flashing beacon on Florida Ave west of school was not working in AM
- ✓ Bicycle riders and walkers are released first at dismissal
- ✓ Emergency evacuation plan “A” is to relocate students to playground of vacant development behind school; no gate or sidewalk connections to neighborhood
- ✓ Bicycle rack relocated to pedestrian gate in grass



Bike Rack

Findings:

- ✓ Several crosswalks throughout 2-mile walk zone were noted to be faded
- ✓ Several pedestrians observed to arrive to school from Harrison St which has no sidewalk
- ✓ Sidewalk gaps noted on Georgia Ave and Madison St; Damaged sidewalk on Madison St

Recommendations:

- ✓ Repaint / install ladder style crosswalks throughout 2-mile walk zone
- ✓ Construct sidewalk along Harrison St and Kansas Ave
- ✓ Close sidewalk gaps / fix sidewalk on Georgia Ave and Madison St



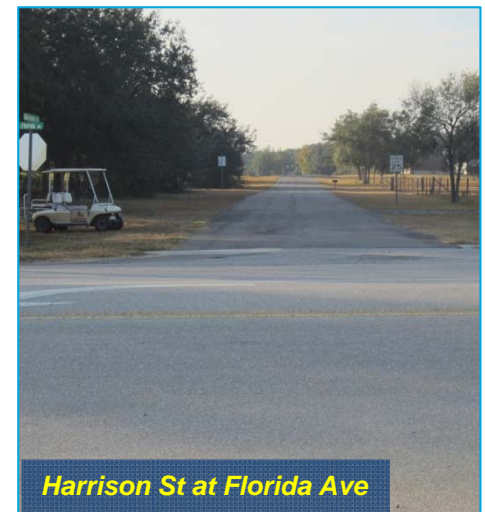
CR 561 at CR 48



Sidewalk Gap on Madison St at Alabama Ave



Damaged Sidewalk on Madison St



Harrison St at Florida Ave

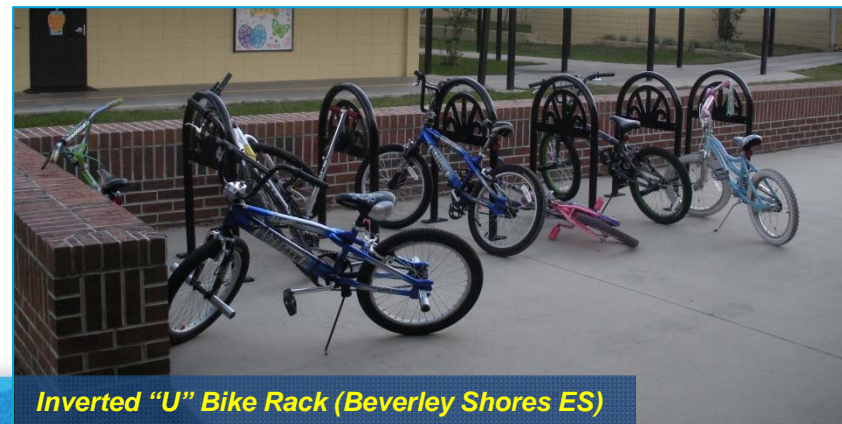


Sidewalk Gap at Bus Loop Entrance



Recommendations:

- ✓ Construct sidewalk connection at bus loop entrance and Florida Ave; Upgrade pavement markings on Florida Ave at Harrison St
- ✓ Coordinate with City to construct sidewalk connection from car loop storage to development behind school; Install gates in school fencing with access to new connection
 - ✓ Parcel is City easement that extends through neighborhood to north
 - ✓ Tree farmer north of neighborhood is business partner to school
- ✓ Construct concrete pad for and update bicycle rack to inverted “U” or ribbon style bike rack

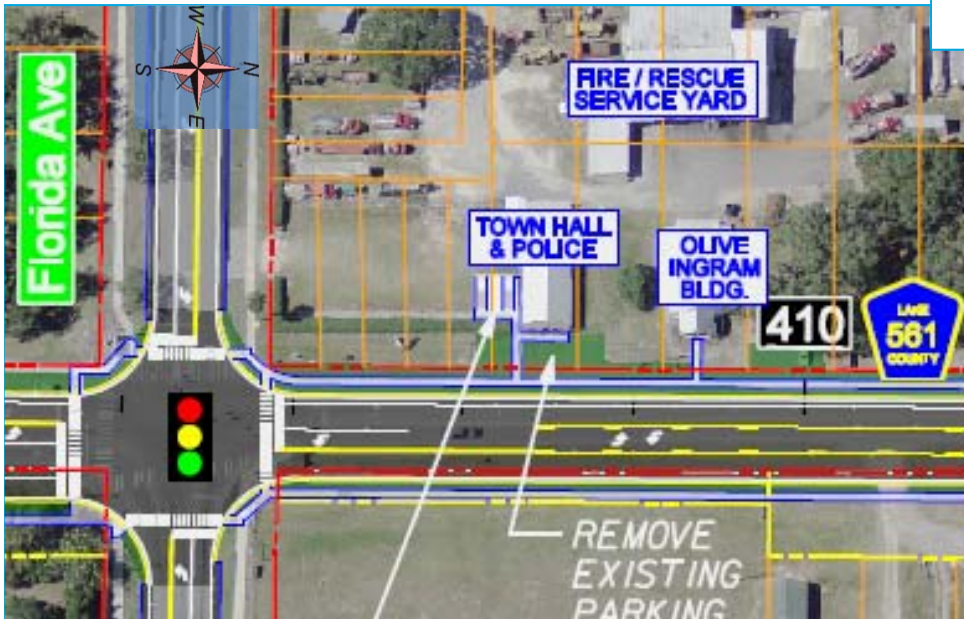
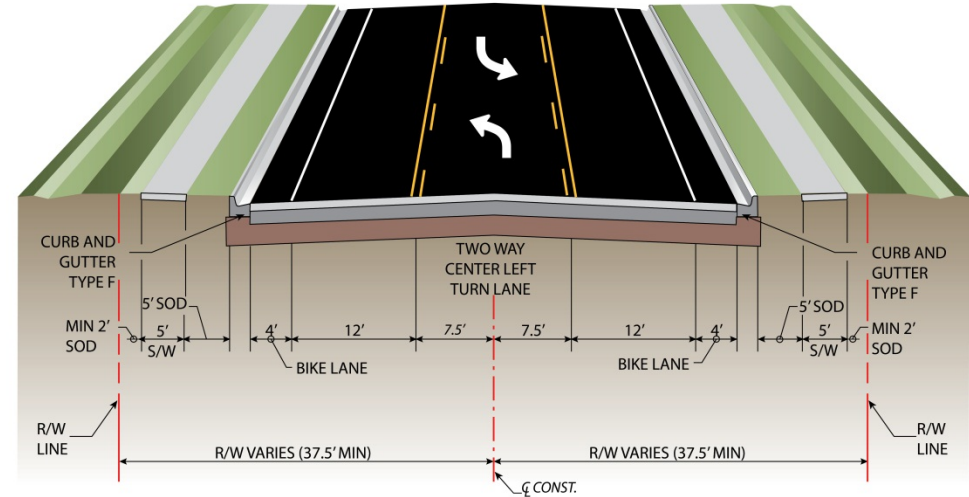


Inverted “U” Bike Rack (Beverley Shores ES)

Findings:

- ✓ Lake County completed a PD&E study for CR 561 from CR 455 to Country Club Drive in September 2010
- ✓ The PD&E study recommendation from Maryland Avenue to Virginia Avenue was a 3 lane roadway, with 5 foot sidewalks on either side.

Preferred Typical Section
Segment 3 and Segment 4



- ✓ The study included a recommendation to move the parking area in front of the Town Hall and create a sidewalk and walkway in this area.



A SAFE SCHOOLS TRANSPORTATION STUDY

Astatula Elementary School

Other Projects CR 561

Findings:

- ✓ The triangular area created by Monroe Street, Georgia Avenue, CR 561 and Vermont Avenue is very dangerous for pedestrians, due to the number of open driveways and the lack of a defined pedestrian space.
- ✓ The CR 561 PD&E concept plans include converting Monroe Street to a right-in / right-out only configuration with a median on CR 561.

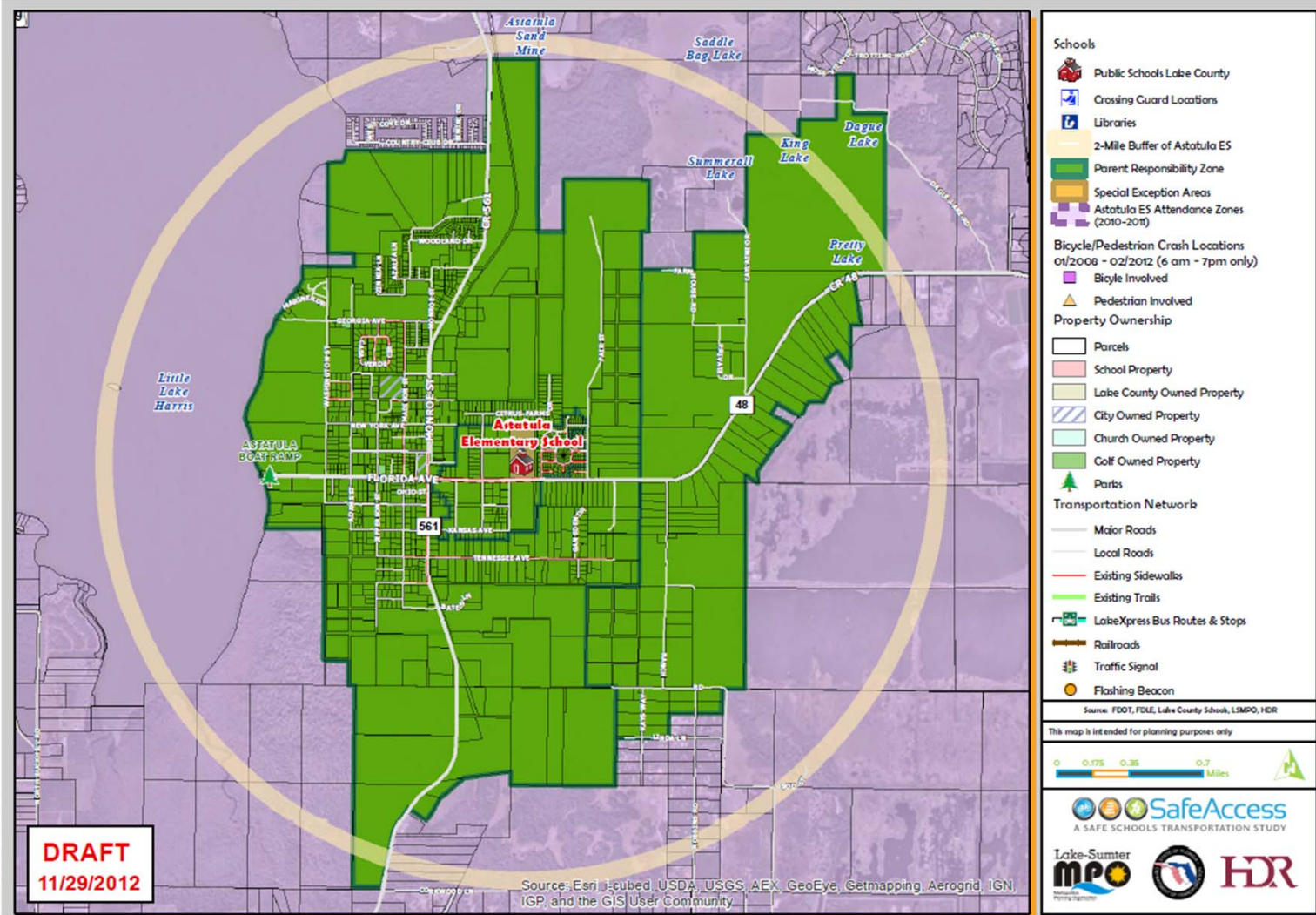
Recommendations:

- ✓ In conjunction with the CR 561 project, or future redevelopment, construct sidewalk or define pedestrian space along Monroe Street
- ✓ Add sidewalk on Georgia Avenue and to connect CR 561 to Madison Street sidewalk



Astatula Elementary School

Astatula Elementary School: Existing Conditions Map



Recommended Project List

Project Number	Roadway	Location	Project
1	At School	Car Loop	Enforce traffic flow; Repaint as one-way
2	At School	Car Loop	Update crosswalks at school driveways and upgrade designated car loop crossing to color stamped asphalt or similar "durable" improvement
3	At School	Car Loop	Install gates along car ramp
4	At School	Bicycle Rack	Install concrete pad and inverted "U" or ribbon bicycle rack
5	At School	Car Loop Queue	Pave car loop with sidewalk on west side
6	CR 48	Madison St to Alamanda Dr	Install crosswalks on all cross streets
	CR 561	At Kansas Ave	Install new crosswalks
	CR 48	Harrison St and Alamanda Dr Intersections	Install crosswalks / mid-block treatments
7	CR 48	Harrison St to Alamanda Dr	Install new signage

Astatula Elementary School

Project Number	Roadway	Location	Project
8	Harrison St	CR 48 to Kansas Ave	Install new sidewalk
9	Kansas Ave	CR 561 to Harrison St	Install new sidewalk
10	Georgia Ave	At Miss Ollie Dr	Close sidewalk gap; install detectable warning mats
	Madison St	At Vermont Ave	Close sidewalk gap
	CR 48	At Bus Loop	Close sidewalk gap on east side of bus entrance / exit



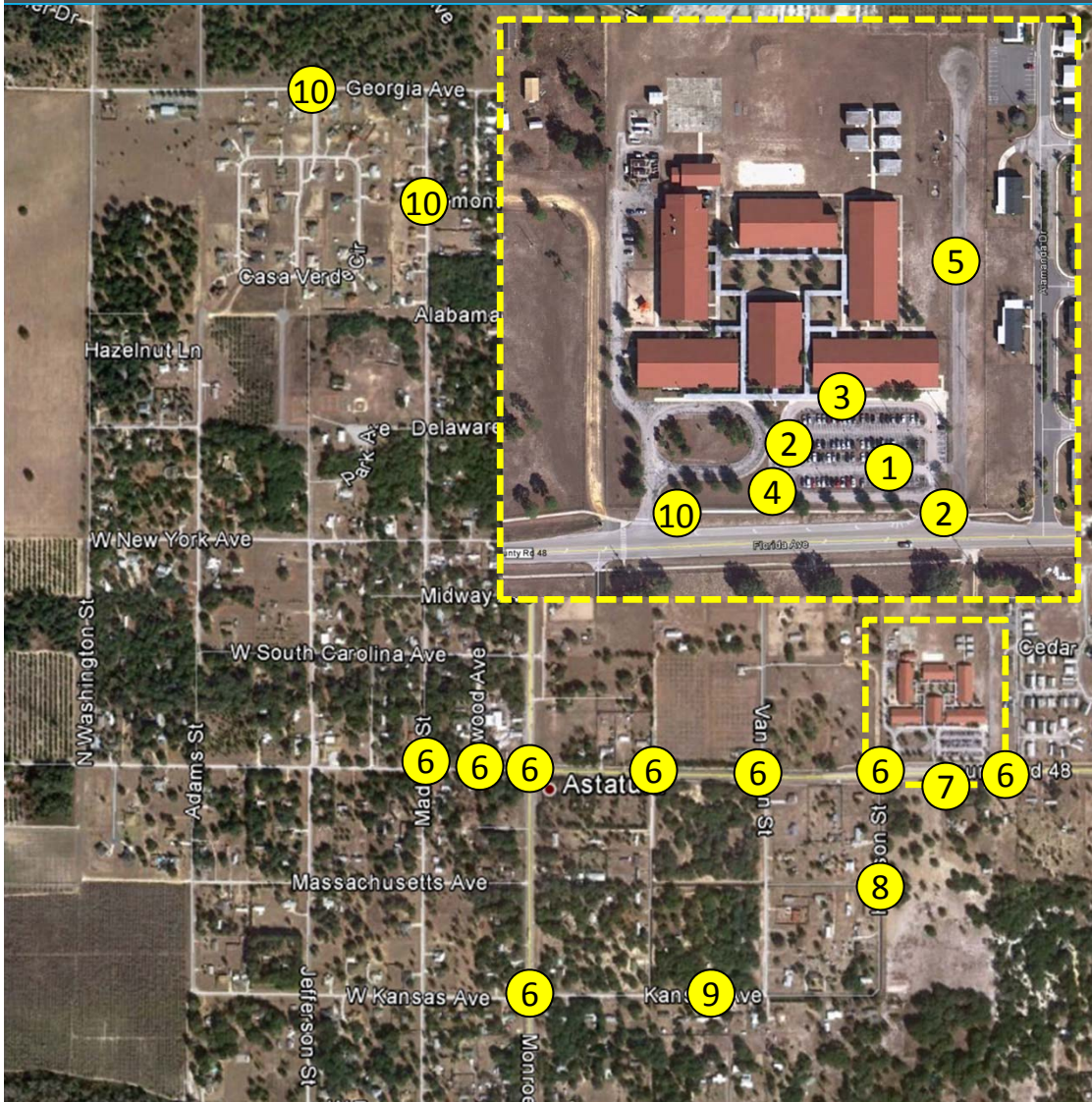


SafeAccess

A SAFE SCHOOLS TRANSPORTATION STUDY

Astatula Elementary School

Recommended Priority Projects



Recommendations:

1. Repaint car loop as one-way
2. Update car loop crosswalks to ladder - style
3. Install car loop gates
4. Replace bicycle rack with U or Ribbon Style racks on a concrete pad
5. Pave car loop queue; Install sidewalk
6. Install / repair crosswalks on CR 48 from Madison St to Alamanda Dr; Install crosswalks at CR 561 / Kansas Ave
7. Install new signage on Florida Ave
8. Install new sidewalk on Harrison St
9. Install new sidewalk on Kansas Ave
10. Close sidewalk gaps on Georgia Ave, Madison St, and bus loop entrance



A SAFE SCHOOLS TRANSPORTATION STUDY

Astatula Elementary School

Recommended Project #1

Improve Car Loop

Recommendation:

- ✓ Enforce policy requiring parents to line up outside of car gate until dismissal; Use cones to discourage “cutting” the line; Parents requesting to park should be encouraged to use most direct parking spaces
- ✓ Repaint / stripe car loop as one way including exit; Repaint crosswalk at car loop exit with high visibility ladder style





A SAFE SCHOOLS TRANSPORTATION STUDY

Astatula Elementary School

Recommended Project #2

Update Car Loop Crosswalks

Recommendation:

- ✓ Repaint crosswalk at car loop driveways with high visibility ladder style
- ✓ Install detectable warning mats on all ramps
- ✓ Upgrade designated crosswalk with durable material (i.e. colored stamped asphalt)





A SAFE SCHOOLS TRANSPORTATION STUDY

Astatula Elementary School

Recommended Project #3

Install Car Loop Gates

Recommendation:

- ✓ Install gates along pick-up / drop-off area





A SAFE SCHOOLS TRANSPORTATION STUDY

Astatula Elementary School

Recommended Project #4

Improved Bicycle Parking

Recommendation:

- ✓ Construct concrete pad for and update bicycle rack to inverted “U” or ribbon style bike rack



Recommended Project #5

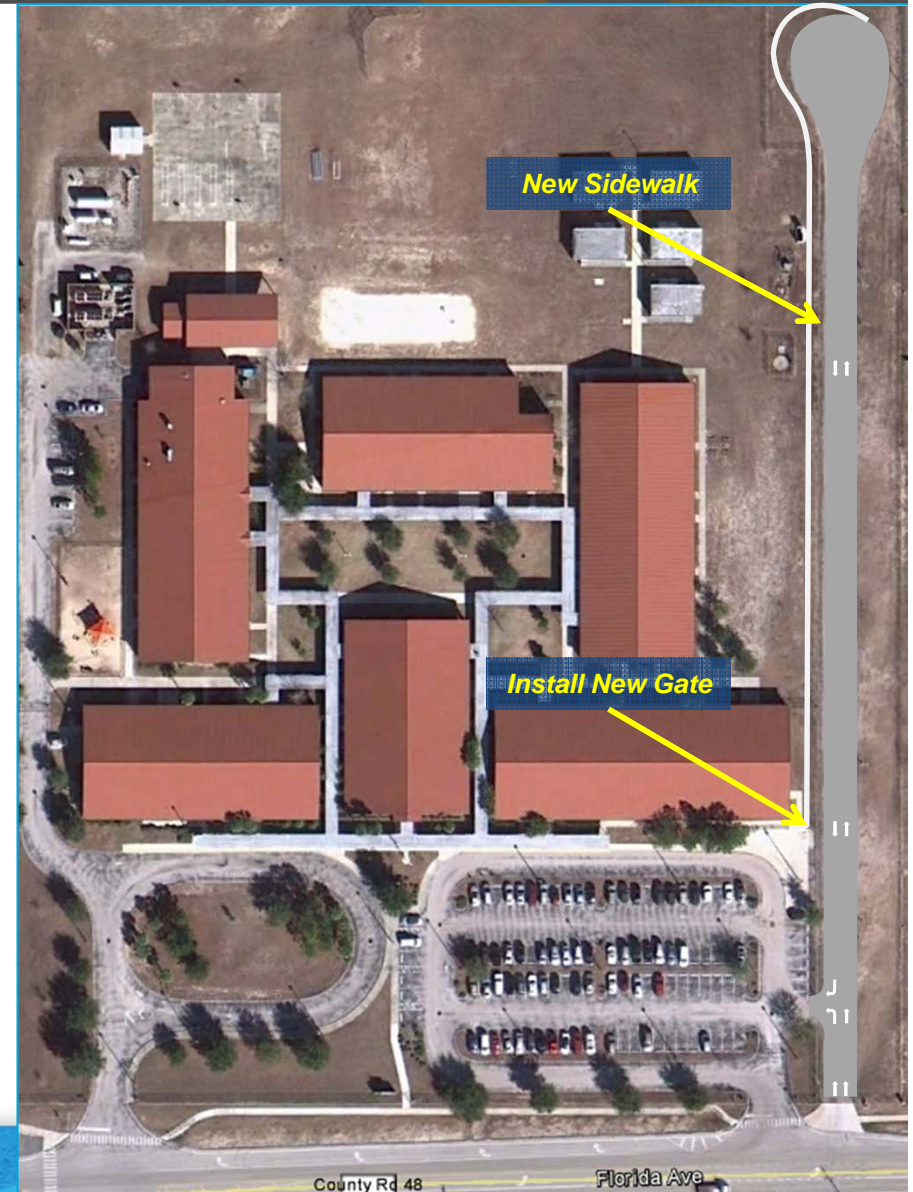
Pave Car Loop Queue

Findings:

- ✓ Car queue utilizes unpaved City parcel
- ✓ Emergency evacuation route involves leading student up the car queue and cutting the fence to evacuate to vacant neighborhood north of school

Recommendations:

- ✓ Coordinate with City to pave car loop queue
 - ✓ Include appropriate signage and pavement markings
- ✓ Construct new sidewalk along west side of car loop queue from existing sidewalk along car loop to evacuation point on north end of car loop queue
 - ✓ Install new gate at existing sidewalk along car loop queue





A SAFE SCHOOLS TRANSPORTATION STUDY

Astatula Elementary School

Recommended Project #6

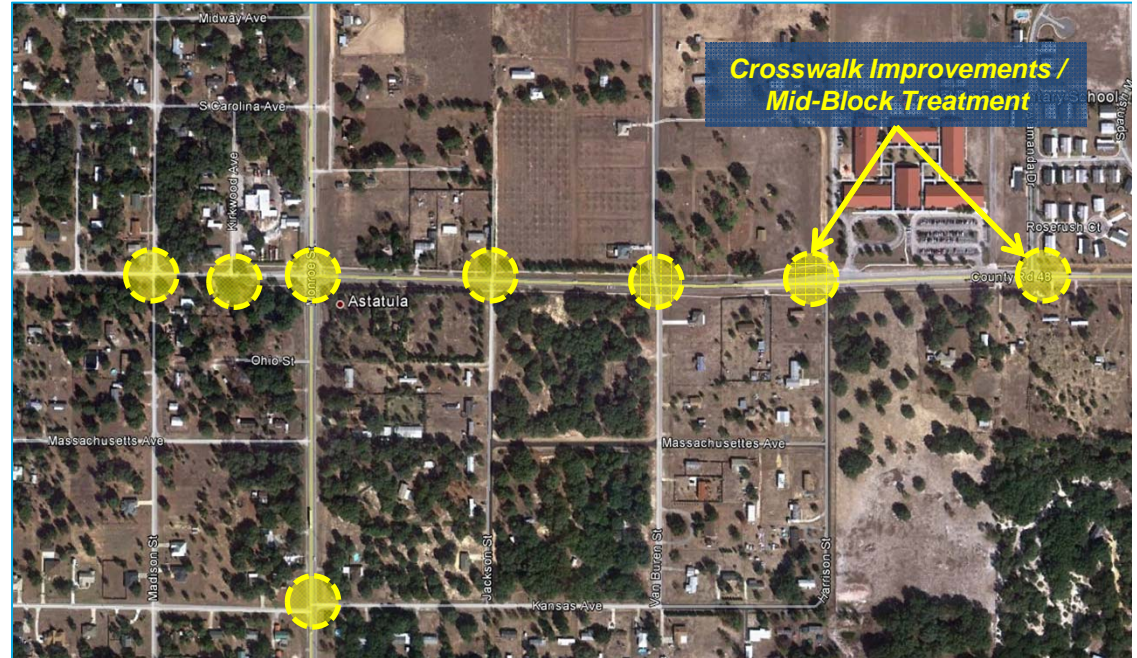
Crosswalk Improvements

Findings:

- ✓ Several walkers were observed to arrive / depart school from southeast
- ✓ Crosswalks were noted to be missing or faded

Recommendations:

- ✓ Install crosswalks / mid-block treatments on CR 48 at Harrison St and Alamanda Dr
- ✓ Repaint crosswalk at CR 48 / CR 561 intersection
- ✓ Repaint / install crosswalks and ADA detectable warning mats on all CR 48 cross streets from Madison St to Alamanda Dr
- ✓ Install new crosswalks at CR 561 / Kansas Ave intersection





A SAFE SCHOOLS TRANSPORTATION STUDY

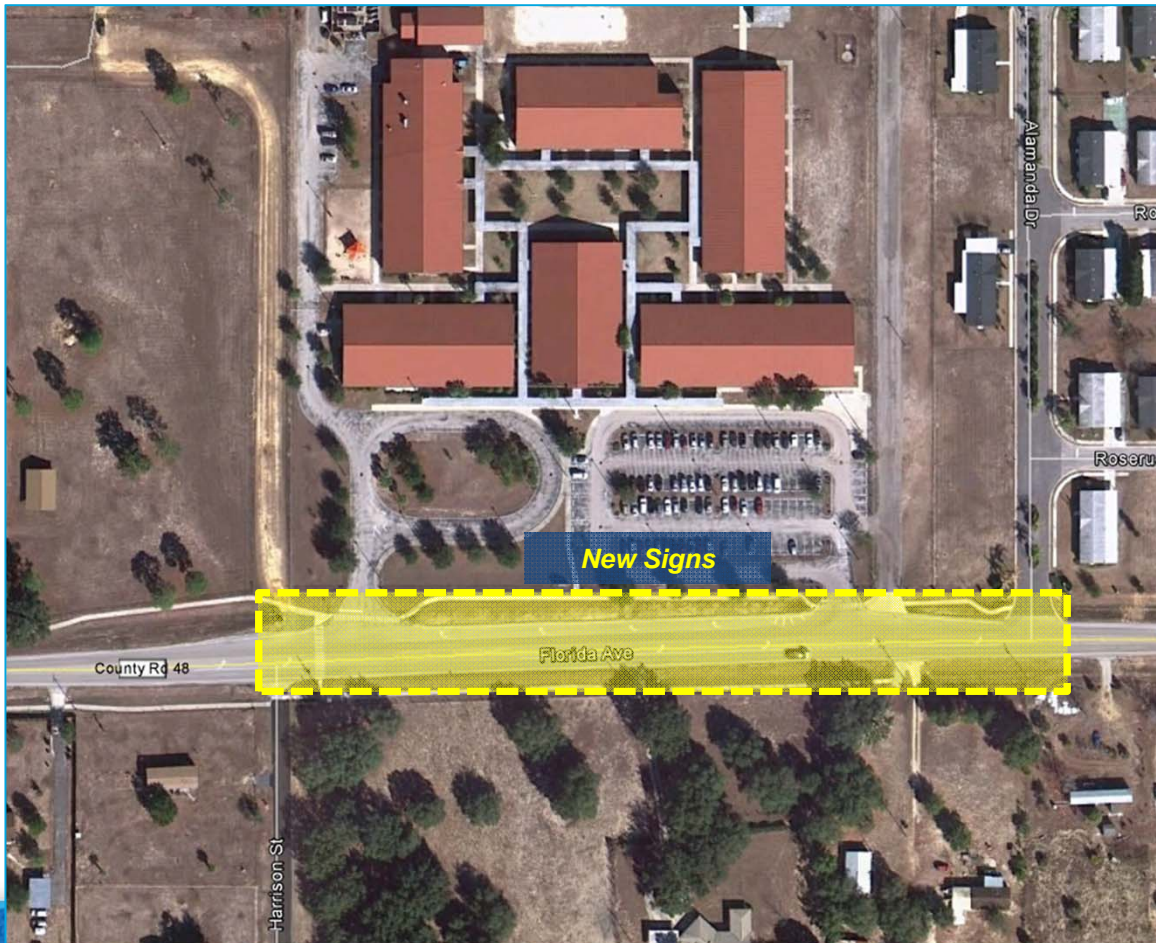
Astatula Elementary School

Recommended Project #7

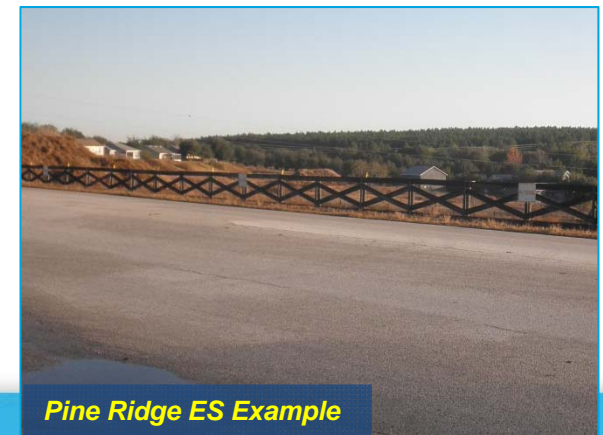
Install CR 48 Signage In Front Of School

Recommendations:

- ✓ Install Signage In Front Of School "No Stopping, Standing, Or Parking"



Pine Ridge ES Example



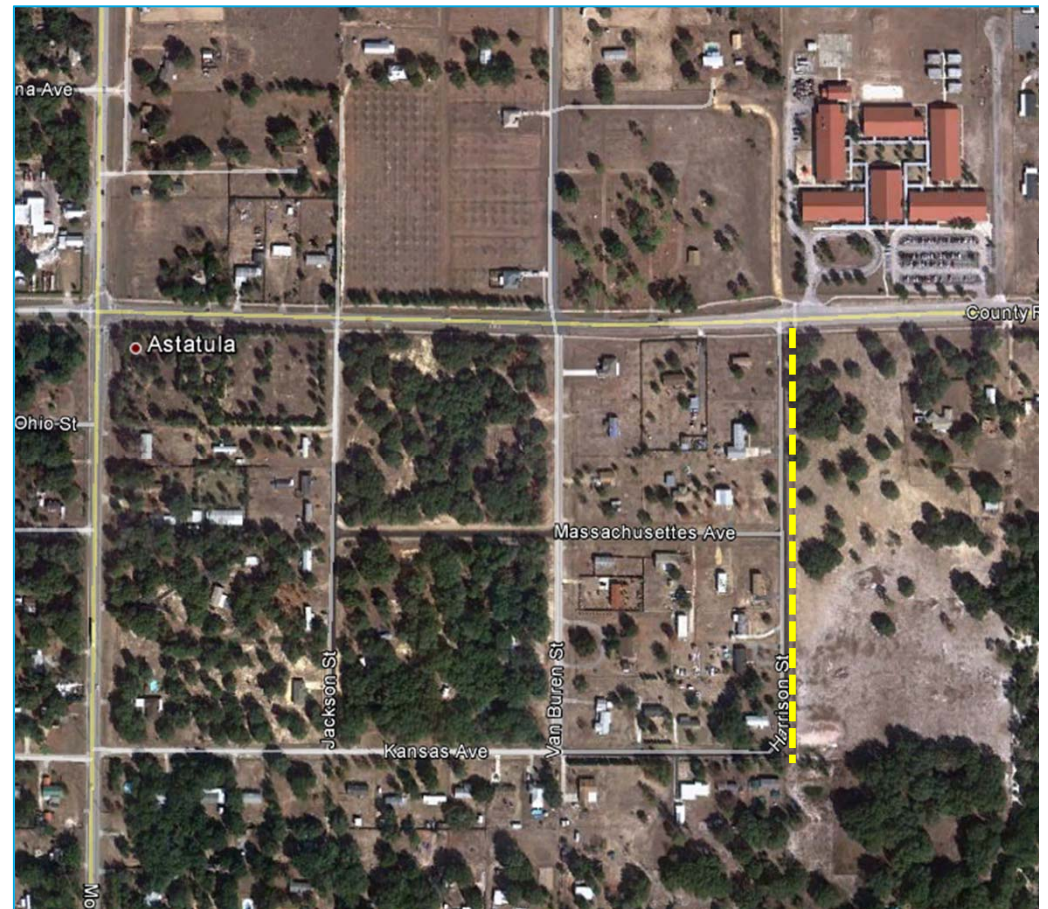
Pine Ridge ES Example

Findings:

- ✓ Several students observed to walk from southwest

Recommendations:

- ✓ Install new sidewalk on Harrison St from CR 48 to Kansas Ave



Findings:

- ✓ Several students observed to walk from southwest

Recommendations:

- ✓ Install new sidewalk on Kansas Ave from CR 561 to Harrison St





A SAFE SCHOOLS TRANSPORTATION STUDY

Astatula Elementary School

Recommended Project #10

Close Sidewalk Gaps

Recommendation:

- ✓ Georgia Ave at Miss Ollie Dr; Also install crosswalk / detectable warning mats on Miss Ollie Dr
- ✓ Madison St at Vermont Ave
- ✓ East side of bus loop at CR 48



Roadway	From/To	Project
Car Loop Parcel	North end of Car Loop to Tree Farm	Add sidewalk; pedestrian gate
Madison Street	Maryland Ave to Florida Ave	Add sidewalk
Madison Street	Delaware Ave to Alabama Ave	Add sidewalk on west side of Madison
Alabama Avenue	Madison St to CR 561	Add sidewalk
Georgia Avenue	Madison St to CR 561	Add sidewalk
CR 561	CR 455 to Country Club Drive	Coordinate with Lake County and Lake~Sumter MPO



Other Sidewalk Connections

New Emergency Evacuation Route Sidewalk / Neighborhood Connection

Findings:

- ✓ School's existing emergency evacuation plan is to evacuate students to an undeveloped residential neighborhood behind school
- ✓ City-owned easement currently utilized for car queue storage extends through neighborhood
- ✓ Tree farmer north of neighborhood is partner to the school

Recommendation:

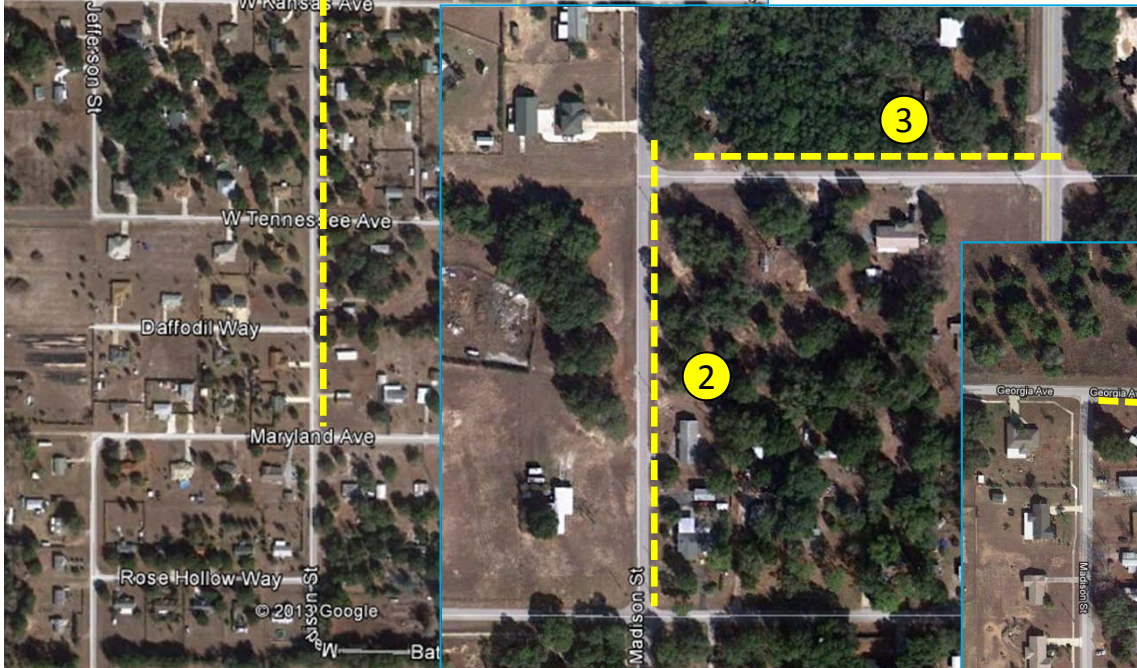
- ✓ Coordinate with City to construct sidewalk connection from car loop storage to development behind school; Install gates in school fencing with access to new connection
 - ✓ Would also provide a sidewalk connection to future neighborhoods behind school



Astatula Elementary School

Recommendation:

1. Madison Street from Maryland Avenue to Florida Avenue
2. West side of Madison Street from Delaware Avenue to Alabama Avenue
3. Alabama Avenue from Madison Street to CR 561
4. Georgia Avenue from Madison Street to CR 561
5. Continued Coordination with Lake County and Lake~Sumter MPO on any future plans for CR 561.





Astatula Elementary School

Contact Information

This website represents an ongoing commitment to increase safe access to schools within the Lake~Sumter Metropolitan Planning Organization Planning Area.

Updates to data, and suggestions for programming and project ideas are welcome from all agencies and the general public.

Mike Woods

Project Manager, Transportation Planner

(352) 315-0170

mwoods@lakesumtermpo.com



Mindy Heath, AICP

Consultant Project Manager

(407) 420-4200

mindy.heath@hdrinc.com



*Promoting Regional
Transportation Partnerships*

Recommendation:

- ✓ Enforce policy requiring parents to line up outside of car gate until dismissal; Use cones to discourage “cutting” the line; Parents requesting to park should be encouraged to use most direct parking spaces
- ✓ Repaint / stripe car loop as one way including exit; Repaint crosswalk at car loop exit with high visibility ladder style
- ✓ Install gates along pick-up / drop-off area
- ✓ Install detectable warning mats on all ramps
- ✓ Upgrade designated crosswalk with durable material (i.e. colored stamped asphalt)

