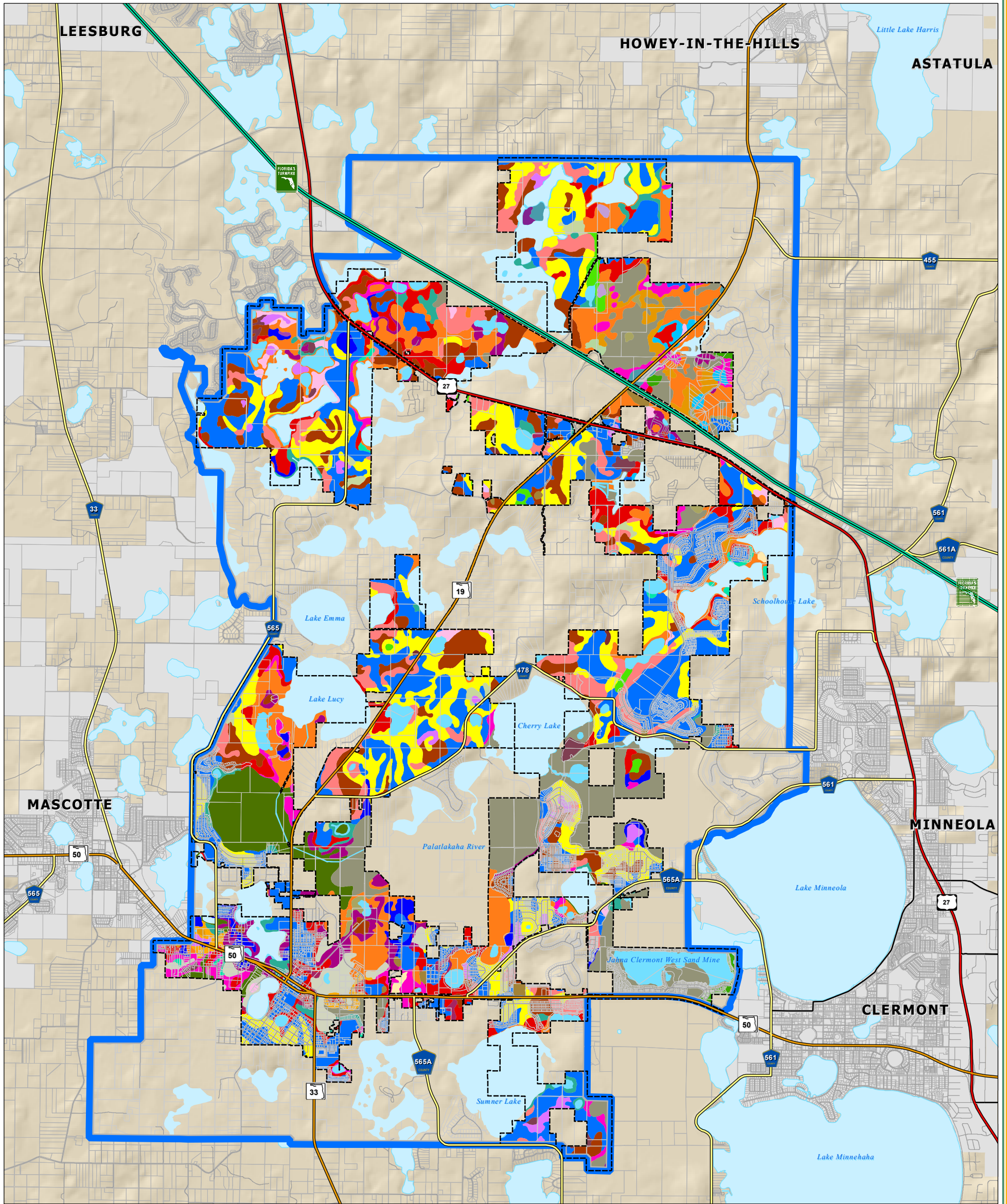



# CITY OF GROVELAND LAKE COUNTY, FLORIDA

# SOILS MAP AND FUTURE PLANNING AREA




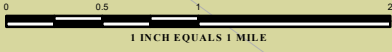
**LEGEND**

- Water Body
- Municipal Area
- Municipal Delineation
- Future Planning Area
- County Road
- State Road
- US Highway
- Turnpike



**CITY OF GROVELAND**  
156 S. LAKE AVENUE  
GROVELAND, FL 34736  
WWW.GROVELAND-FL.GOV

MAP COMPOSITION:  
JULY, 2018

Map Unit Symbol/ Soil Type Name	Soil Type Name	Soil Type Name
	1 SPARR SAND, 0 TO 5 PERCENT SLOPES	
	4 ANCLOTE AND MYAKKA SOILS	
	5 APOPKA SAND, 0 TO 5 PERCENT SLOPES	
	6 APOPKA SAND, 5 TO 12 PERCENT SLOPES	
	7 ASTATULA SAND, 0 TO 5 PERCENT SLOPES	
	8 CANDLER SAND, 0 TO 5 PERCENT SLOPES	
	9 CANDLER SAND, 5 TO 12 PERCENT SLOPES	
	10 CANDLER SAND, 12 TO 40 PERCENT SLOPES	
	11 BRIGHTON MUCK, DEPRESSIONAL	
	14 EUREKA LOAMY FINE SAND, 0 TO 2 PERCENT SLOPES	
	17 ARENTS	
	20 IMMOKALEE SAND	
	21 LAKE SAND, 0 TO 5 PERCENT SLOPES	
	22 LAKE SAND, 5 TO 12 PERCENT SLOPES	
	24 KENDRICK SAND, 0 TO 5 PERCENT SLOPES	
	25 KENDRICK SAND, 5 TO 8 PERCENT SLOPES	
	28 MYAKKA-MYAKKA, WET, SANDS, 0 TO 2 PERCENT SLOPES	
	30 LOCHLOOSA SAND	
	31 OCOEE MUCKY PEAT	
	32 OKLAWAHA MUCK	
	33 ONA-ONA, WET, FINE SAND, 0 TO 2 PERCENT SLOPES	
	34 ORLANDO FINE SAND, 0 TO 5 PERCENT SLOPES	
	35 PAOLA SAND, 0 TO 5 PERCENT SLOPES	
	37 ELLZEY SAND	

**DATA SOURCES:**  
Soil Survey Database for Florida - Pub.Nov17  
Lake County GIS Department; Planimetrics  
Data Compilation and Map production by the  
Lake-Sumter Metropolitan Planning Organization.

This map product was prepared from a Geographic Information System established by the City of Groveland, the Lake-Sumter Metropolitan Planning Organization, and Lake County Board of County Commissioners. Its employees, agents and personnel, make no warranty as to its accuracy, and in particular its accuracy as to labeling, dimensions, contours, property boundaries, or placement or location of any map features thereon. The City of Groveland, the Lake-Sumter Metropolitan Planning Organization and Lake County Board of County Commissioners, its employees, agents and personnel MAKE NO WARRANTY OF MERCHANTABILITY OR WARRANTY FOR FITNESS OF USE FOR A PARTICULAR PURPOSE EXPRESS OR IMPLIED WITH RESPECT TO THIS MAP PRODUCT. Independent verification of all data contained on this map product should be obtained by any user of this map.