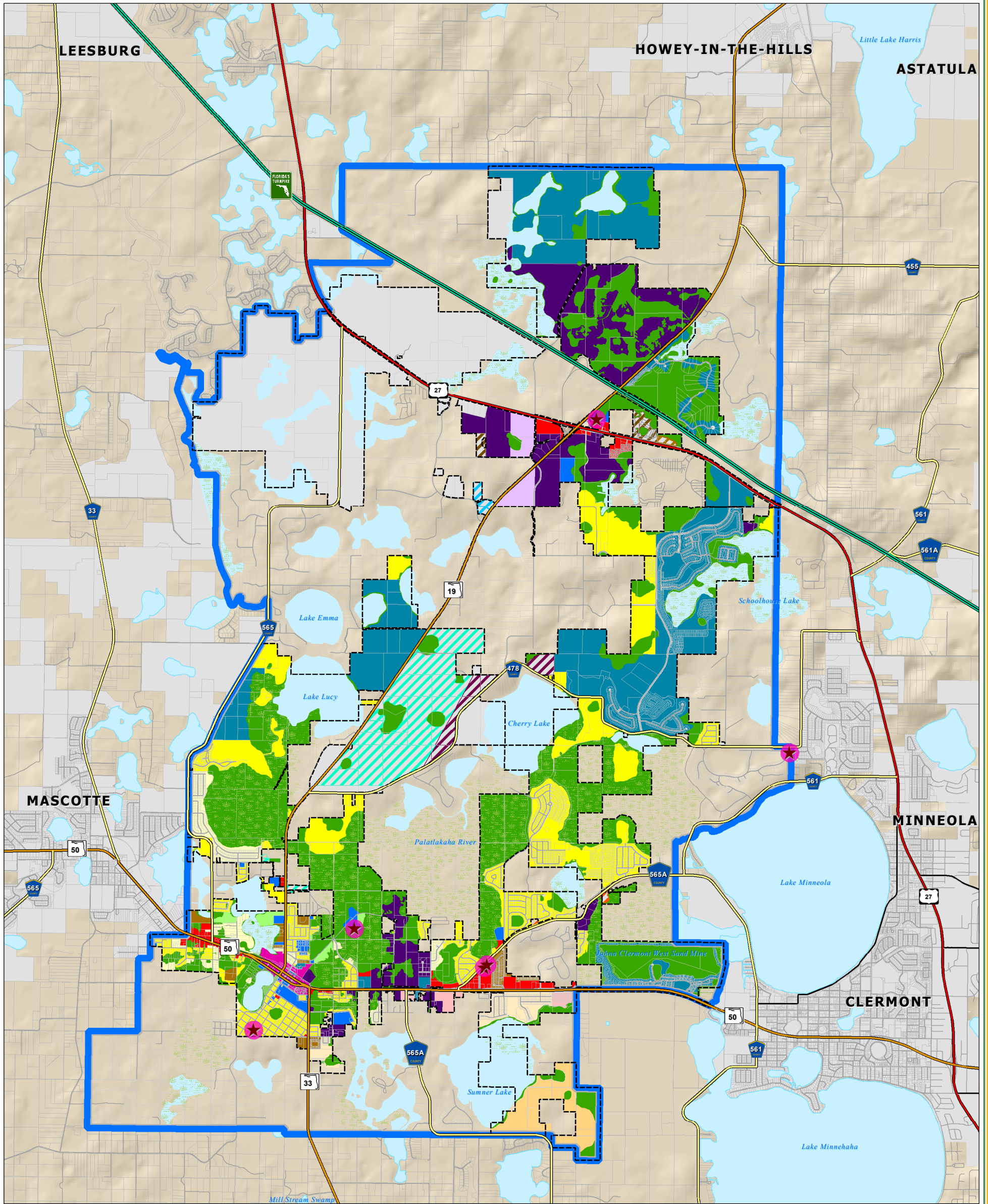


# CITY OF GROVELAND LAKE COUNTY, FLORIDA

# 2025 FUTURE LAND USES AND FUTURE PLANNING AREA

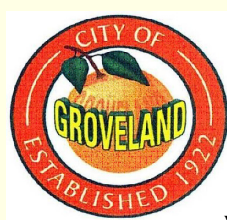


### LEGEND

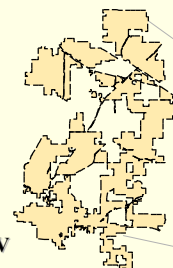
- ★ Potable Water Wellhead
- Wellhead Protection Area (500 ft radius)
- Municipal Area
- Property Delineation
- Future Planning Area
- Water Body
- Swamp/Marsh Area
- County Road
- State Road
- US Highway
- Turnpike

### Future Landuse Categories

- |                                 |  |                                     |                                  |
|---------------------------------|--|-------------------------------------|----------------------------------|
| Agriculture (AG)                | Green Swamp Single Family Low Density (GSSFLD) | Single Family Medium Density (SFMD) | Lake County Regional Office      |
| Recreation & Open Space (REC)   | Green Swamp Single Family Rural (GSSFRD)       | Medium Density Residential (MDR)    | Lake County Rural                |
| Conservation (CON)              | Mixed Use (MU)                                 | High Density Residential (HDR)      | Lake County Suburban             |
| Green Swamp Commercial (GSC)    | North Workplace Development (NWD)              | Industrial (IND)                    | Lake County Urban Expansion      |
| Office/Commercial (COMM)        | Single Family Low Density (SFLD)               | Public/Institutional (P/I)          | Lake County Urban Low Density    |
| Central Business District (CBD) |  | Lake County Heavy Industrial        | Lake County Urban Medium Density |



**CITY OF GROVELAND**  
156 S. LAKE AVENUE  
GROVELAND, FL 34736  
WWW.GROVELAND-FL.GOV



0 0.5 1 2  
1 INCH EQUALS 1 MILE

LAST AMENDED:  
MARCH 15, 2012

**DATA SOURCES:**  
City of Groveland Land use designations  
Lake County GIS Department; Planimetrics  
Data Compilation and Map production by the  
Lake-Sumter Metropolitan Planning Organization.  
This map product was prepared from a Geographic Information System established by the City of Groveland, the Lake-Sumter Metropolitan Planning Organization, and Lake County Board of County Commissioners. Its employees, agents and personnel make no warranty as to its accuracy, and in particular its accuracy as to labeling, dimensions, contours, property boundaries, or placement or location of any map features thereon. The City of Groveland, the Lake-Sumter Metropolitan Planning Organization and Lake County Board of County Commissioners, its employees, agents and personnel MAKE NO WARRANTY OF MERCHANTABILITY OR WARRANTY FOR FITNESS OF USE FOR A PARTICULAR PURPOSE EXPRESS OR IMPLIED WITH RESPECT TO THIS MAP PRODUCT. Independent verification of all data contained on this map product should be obtained by any user of this map.