



VIA EMAIL [dgraeber@inwoodinc.com](mailto:dgraeber@inwoodinc.com)

February 16, 2016

David Graeber  
Inwood Consulting, Inc.  
3000 Dovera Drive, Suite 200  
Oviedo, FL 32765

**RE: LAKE WEKIVA TRAIL PD&E STUDIES / TASK 2.7-UTILITIES AND RAILROADS  
(BESH #121012.0001)**

Dear Mr. Graeber:

In accordance with our research on Task 2.7-Utilities and Railroads for the Lake Wekiva PD&E Studies, we are pleased to submit the attached information and maps we have prepared to show the corridor of the existing CSX rail line and the utilities within that corridor.

The first page are the known utility companies we have contacted regarding this project. The subsequent pages represent the map that is the result all mark-ups provided by the existing utilities within this corridor.

Should you have any questions to the material contained herein, please feel free to contact our office.

Sincerely,

BOOTH, ERN, STRAUGHAN & HIOTT, INC.

Duane K. Booth, P.E.  
Principal  
[duanebooth@besandh.com](mailto:duanebooth@besandh.com)

DKB:am

Enclosures

H:\amy\WordPerfect-9.0\Lake-Wekiva Trail PD&E\Lake Wekiva PDE Task 2 7 Submittal 2-16-16.wpd

**ENGINEERS ♦ SURVEYORS ♦ LAND PLANNERS**  
902 North Sinclair Avenue ♦ Tavares, Florida 32778  
Phone: 352.343.8481 ♦ Fax: 352.343.8495  
E-Mail: [Info@besandh.com](mailto:Info@besandh.com) ♦ [www.besandh.com](http://www.besandh.com)  
**Good...Better...BESH!**

**Lake Wekiva Trail - BESH #121012.0001**  
**Utility Companies Contacted**

**TECO**

Bruce Stout  
407-420-2678  
[bstout@tecoenergy.com](mailto:bstout@tecoenergy.com)

**DUKE ENERGY**

[DEFDistributionGOV@duke-energy.com](mailto:DEFDistributionGOV@duke-energy.com)

**CENTURY LINK**

Ty Leslie  
407-814-5293  
[michel.t.leslie@centurylink.com](mailto:michel.t.leslie@centurylink.com)

**CITY OF MOUNT DORA**

Josh Kramm  
352-735-7151  
[Krammj@cityofmountdora.com](mailto:Krammj@cityofmountdora.com)

Charles Revell  
352-735-7151  
[revellc@cityofmountdora.com](mailto:revellc@cityofmountdora.com)

Paul Lahr  
352-735-7155  
[lahrp@ci.mount-dora.fl.us](mailto:lahrp@ci.mount-dora.fl.us)

**BRIGHTHOUSE**

Dave Wilson  
352-330-2906  
[dave.wilson@mybriighthouse.com](mailto:dave.wilson@mybriighthouse.com)

**COMCAST**

Scott Osebold  
352-315-8528  
[scott\\_osebold@comcast.com](mailto:scott_osebold@comcast.com)

**LAKE APOPKA NATURAL GAS**

Alex Wosgien  
407-656-2734  
[awosgien@langd.org](mailto:awosgien@langd.org)

Rick Gullett  
407-656-2734  
[rgullett@langd.org](mailto:rgullett@langd.org)

**FLORIDA GAS TRANSMISSION COMPANY, LLC**

Joseph E. Sanchez

407-838-7171

[joseph.E.Sanchez@energytransfer.com](mailto:joseph.E.Sanchez@energytransfer.com)

Bill Crebs

407-468-6854

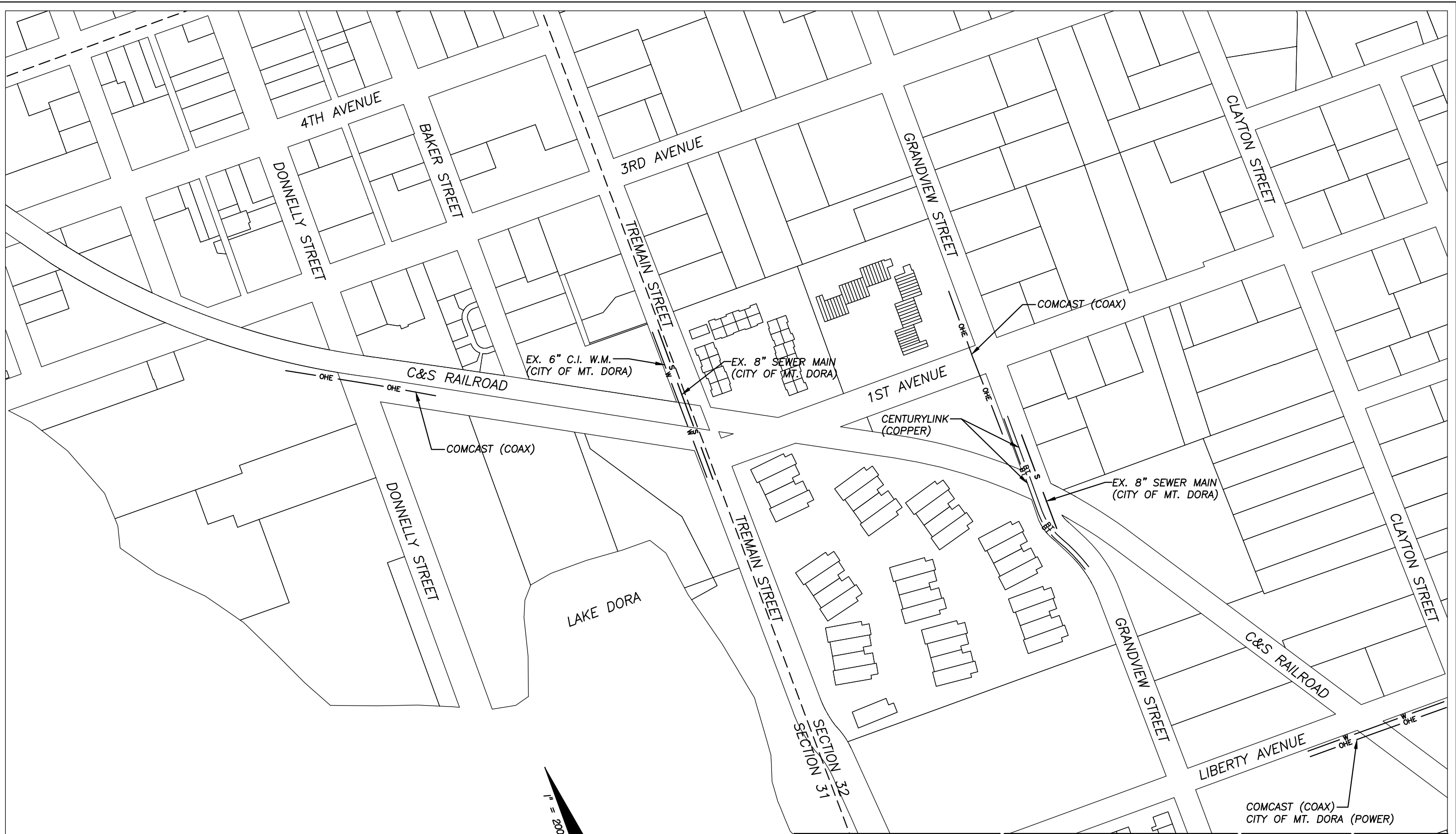
[bill.crebs@energytransfer.com](mailto:bill.crebs@energytransfer.com)

**CITY OF EUSTIS**

Rick Gierok

352-357-2414

[GierokR@ci.eustis.fl.us](mailto:GierokR@ci.eustis.fl.us)



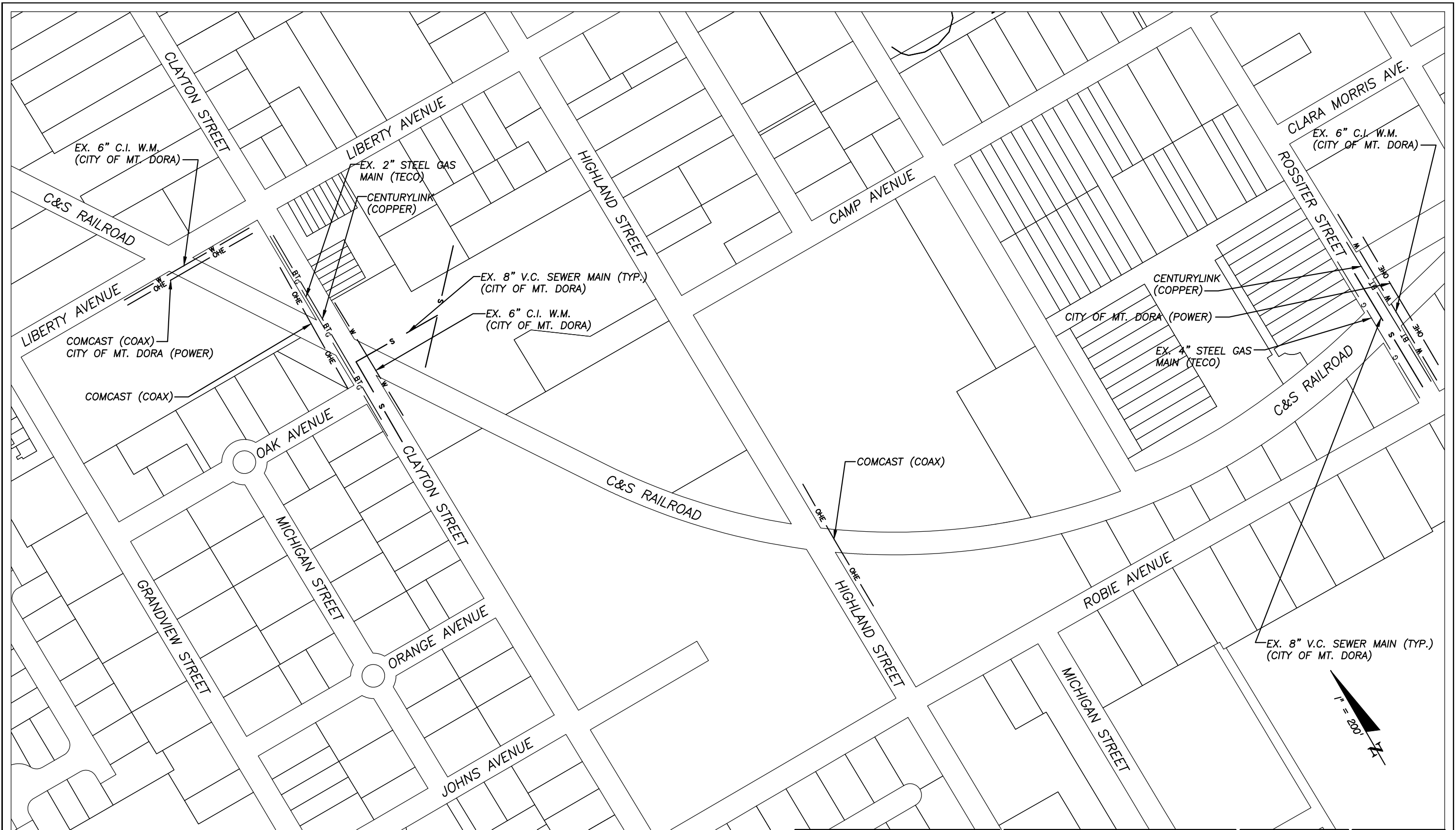
SECTIONS 31-32, TOWNSHIP 19S, RANGE 27E

**BESH**  
 BUSH BROTHERS SURVEYING & LAND PLANNING  
 ENGINEERS • SURVEYORS • LAND PLANNERS  
 350 North Sinclair Ave.  
 Tavares, Florida 32778  
 www.besh.com  
 Office: 352.343.8481  
 Fax: 352.343.8495  
 Certificate of Authorization Number: 27029

LAKE WEKIVA TRAIL PROJECT  
 PLAN SHEET 1

COMCAST (COAX)  
 CITY OF MT. DORA (POWER)

DUANE K. BOOTH, P.E.  
 REG. ENG. #44631  
 DATE: 5-24-2012  
 JOB NO. 121012.0001

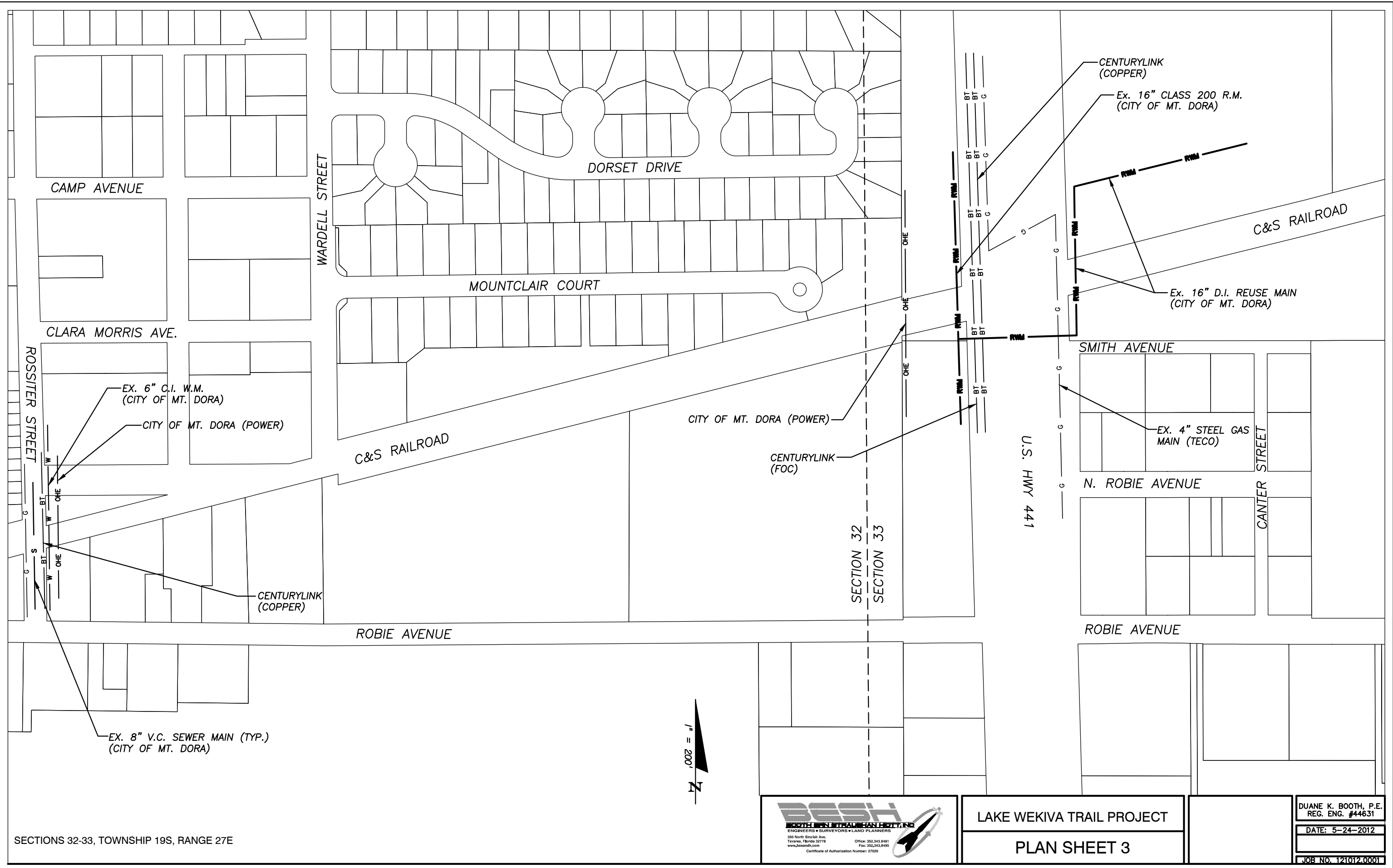


SECTION 32, TOWNSHIP 19S, RANGE 27E

**BESH**  
**BENTON & BENDIS**  
 ENGINEERS • SURVEYORS • LAND PLANNERS  
 350 North Sinclair Ave.  
 Tavares, Florida 32778  
 www.besh.com  
 Office: 352.343.8481  
 Fax: 352.343.8495  
 Certificate of Authorization Number: 27029

LAKE WEKIVA TRAIL PROJECT  
 PLAN SHEET 2

DUANE K. BOOTH, P.E.  
 REG. ENG. #44631  
 DATE: 5-24-2012  
 JOB NO. 121012.0001



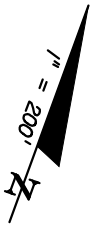
SECTIONS 32-33, TOWNSHIP 19S, RANGE 27E



**BESH**  
**BOTH ENGINTEERS SURVEYORS & LAND PLANNERS**  
 350 North Sinclair Ave.  
 Tavares, Florida 32778  
 www.besh.com  
 Office: 352.343.8481  
 Fax: 352.343.8495  
 Certificate of Authorization Number: 27029

LAKE WEKIVA TRAIL PROJECT  
**PLAN SHEET 3**

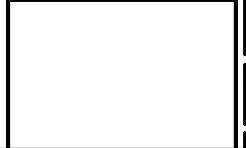
DUANE K. BOOTH, P.E.  
 REG. ENG. #44631  
 DATE: 5-24-2012  
 JOB NO. 121012.0001



SECTION 33, TOWNSHIP 19S, RANGE 27E

**BESH**  
BUSH BROTHERS ENGINEERING & LAND PLANNERS  
ENGINEERS • SURVEYORS • LAND PLANNERS  
350 North Sinclair Ave.  
Tavares, Florida 32778  
www.besh.com  
Office: 352.343.8481  
Fax: 352.343.8495  
Certificate of Authorization Number: 27029

LAKE WEKIVA TRAIL PROJECT  
PLAN SHEET 4



DUANE K. BOOTH, P.E.  
REG. ENG. #44631  
DATE: 5-24-2012  
JOB NO. 121012.0001



SECTIONS 33-34, TOWNSHIP 19S, RANGE 27E

SECTION 33  
SECTION 34

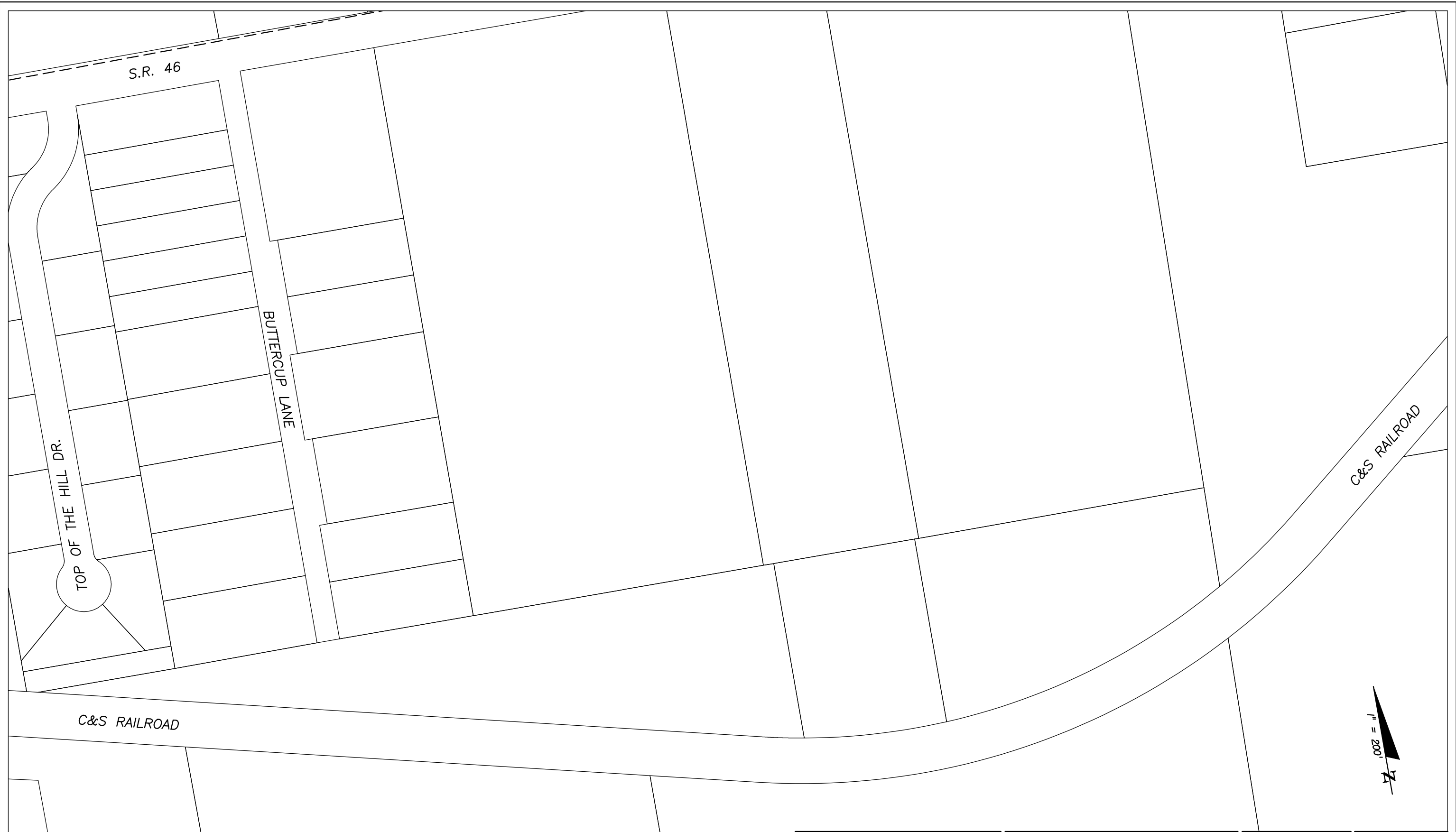


**BS&B**  
**BENTON & BENTON**  
 ENGINEERS • SURVEYORS • LAND PLANNERS  
 350 North Sinclair Ave.  
 Tallahassee, Florida 32310  
 www.bsandb.com  
 Office: 904.343.8481  
 Fax: 904.343.8495  
 Certificate of Authorization Number: 27029

LAKE WEKIVA TRAIL PROJECT  
 PLAN SHEET 5

DUANE K. BOOTH, P.E.  
 REG. ENG. #44631  
 DATE: 5-24-2012  
 JOB NO. 121012.0001





SECTION 34, TOWNSHIP 19S, RANGE 27E

**BESH**  
 ENGINEERS • SURVEYORS • LAND PLANNERS  
 350 North Sinclair Ave.  
 Tavares, Florida 32778  
 www.beshinc.com  
 Office: 352.343.8481  
 Fax: 352.343.8495  
 Certificate of Authorization Number: 27029

LAKE WEKIVA TRAIL PROJECT  
 PLAN SHEET 6

DUANE K. BOOTH, P.E.  
 REG. ENG. #44631  
 DATE: 5-24-2012  
 JOB NO. 121012.0001

SECTION 27  
SECTION 34

SECTION 26  
SECTION 35

S.R. 46

PROGRESS ENERGY

CENTURYLINK  
(COPPER)

CENTURYLINK  
(COPPER)

COMCAST (COAX)

CENTURYLINK  
(FOC)

EX. 6" STEEL GAS  
MAIN (TECO)

ROUND LAKE ROAD

C&S RAILROAD

C&S RAILROAD

CORONADO SOMERSET DRIVE

SECTION 34  
SECTION 35



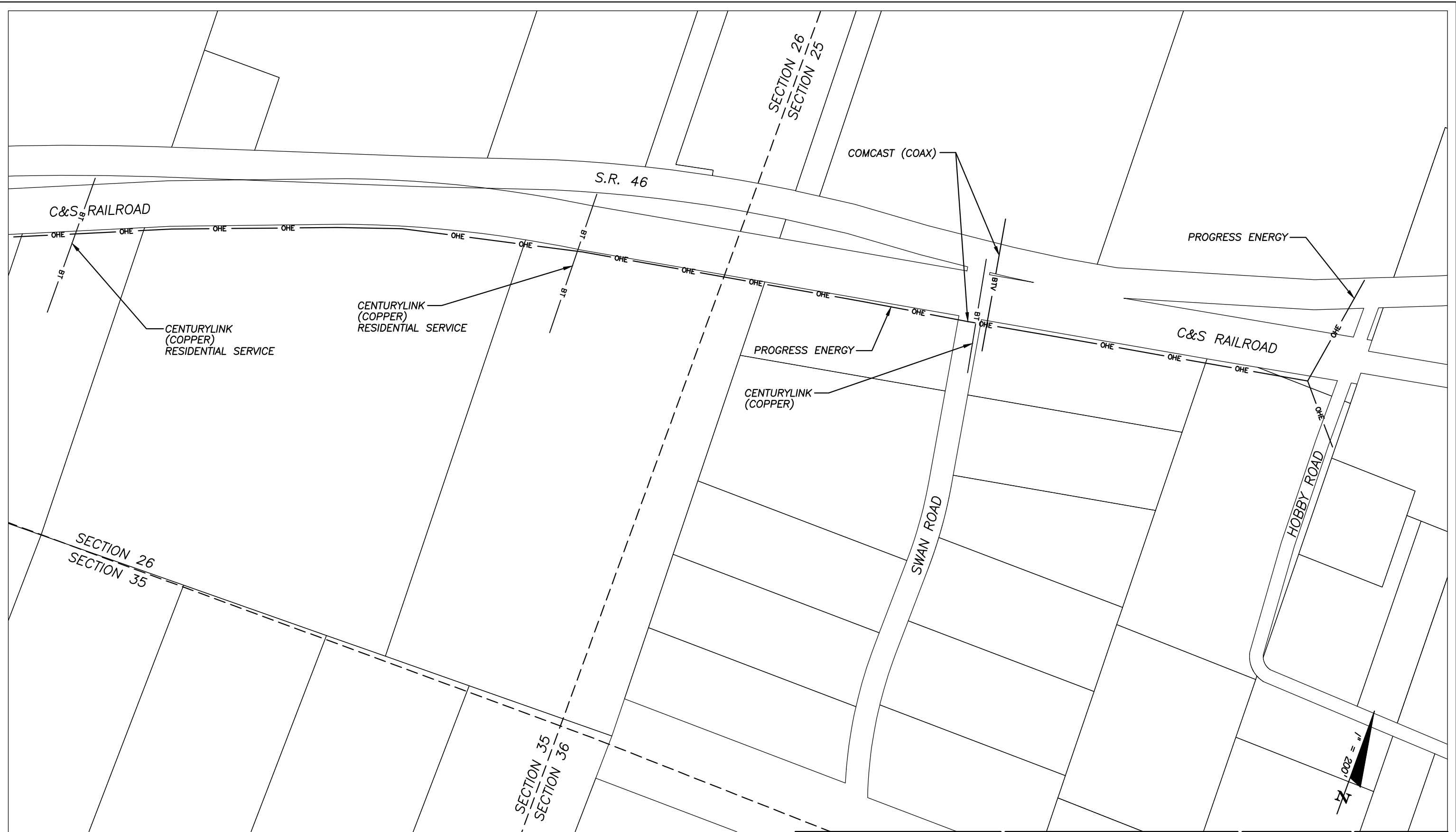
SECTIONS 26-27 & 34-35, TOWNSHIP 19S, RANGE 27E

**BESH**  
 BUSH BROTHERS SURVEYING & LAND PLANNING  
 ENGINEERS • SURVEYORS • LAND PLANNERS  
 350 North Sinclair Ave.  
 Tallahassee, Florida 32310  
 www.besh.com  
 Office: 904.343.8481  
 Fax: 904.343.8499  
 Certificate of Authorization Number: 27029

LAKE WEKIVA TRAIL PROJECT  
PLAN SHEET 7

DUANE K. BOOTH, P.E.  
 REG. ENG. #44631  
 DATE: 5-24-2012  
 JOB NO. 121012.0001



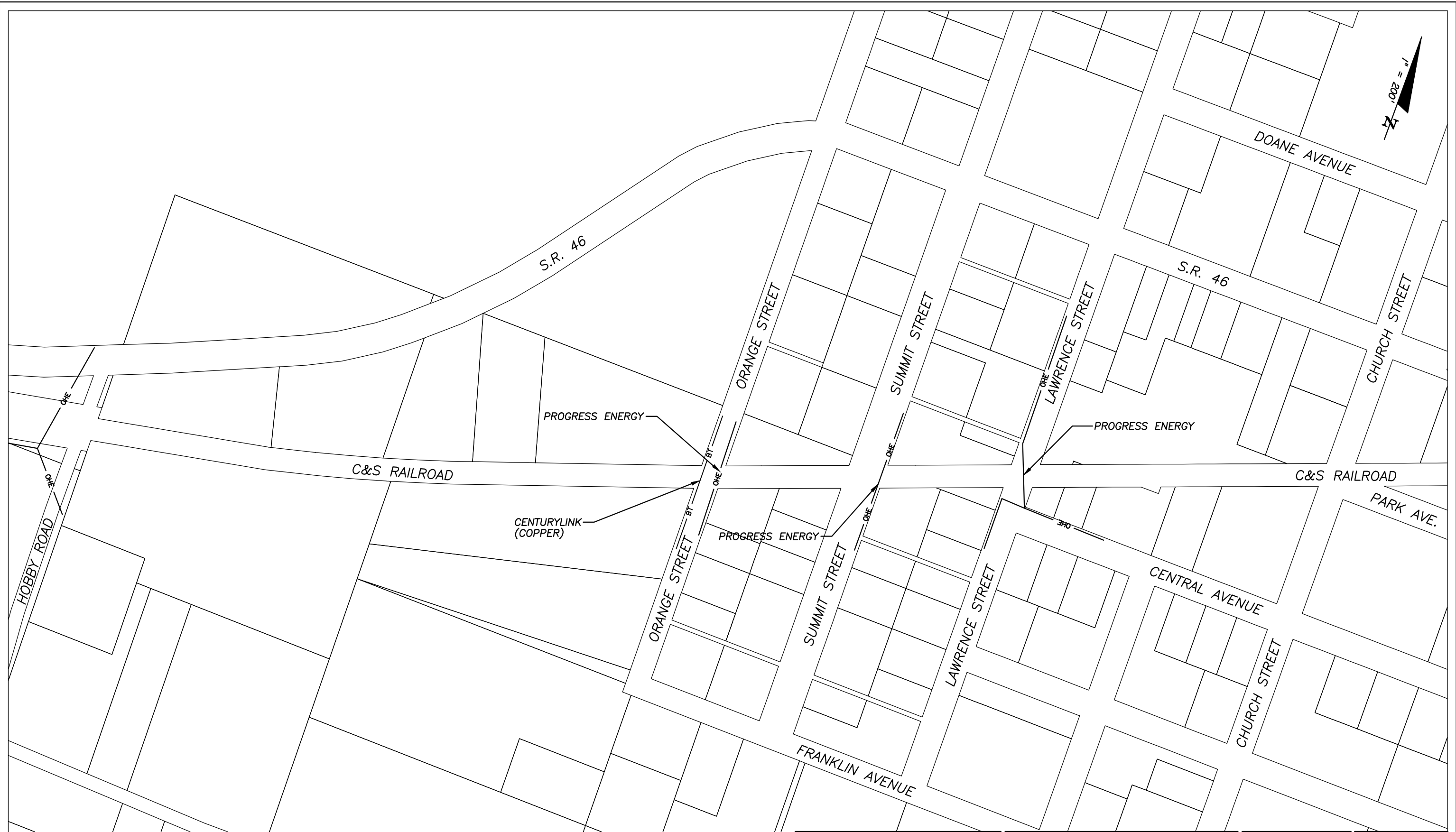
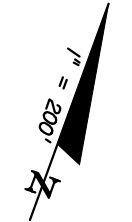


SECTIONS 25-26 & 35-36, TOWNSHIP 19S, RANGE 27E

**BESH**  
 BUSH BROTHERS SURVEYING & LAND PLANNING  
 ENGINEERS • SURVEYORS • LAND PLANNERS  
 350 North Sinclair Ave.  
 Tallahassee, Florida 32310  
 www.besh.com  
 Office: 904.343.8481  
 Fax: 904.343.8495  
 Certificate of Authorization Number: 27029

LAKE WEKIVA TRAIL PROJECT  
 PLAN SHEET 9

DUANE K. BOOTH, P.E.  
 REG. ENG. #44631  
 DATE: 5-24-2012  
 JOB NO. 121012.0001



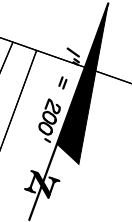
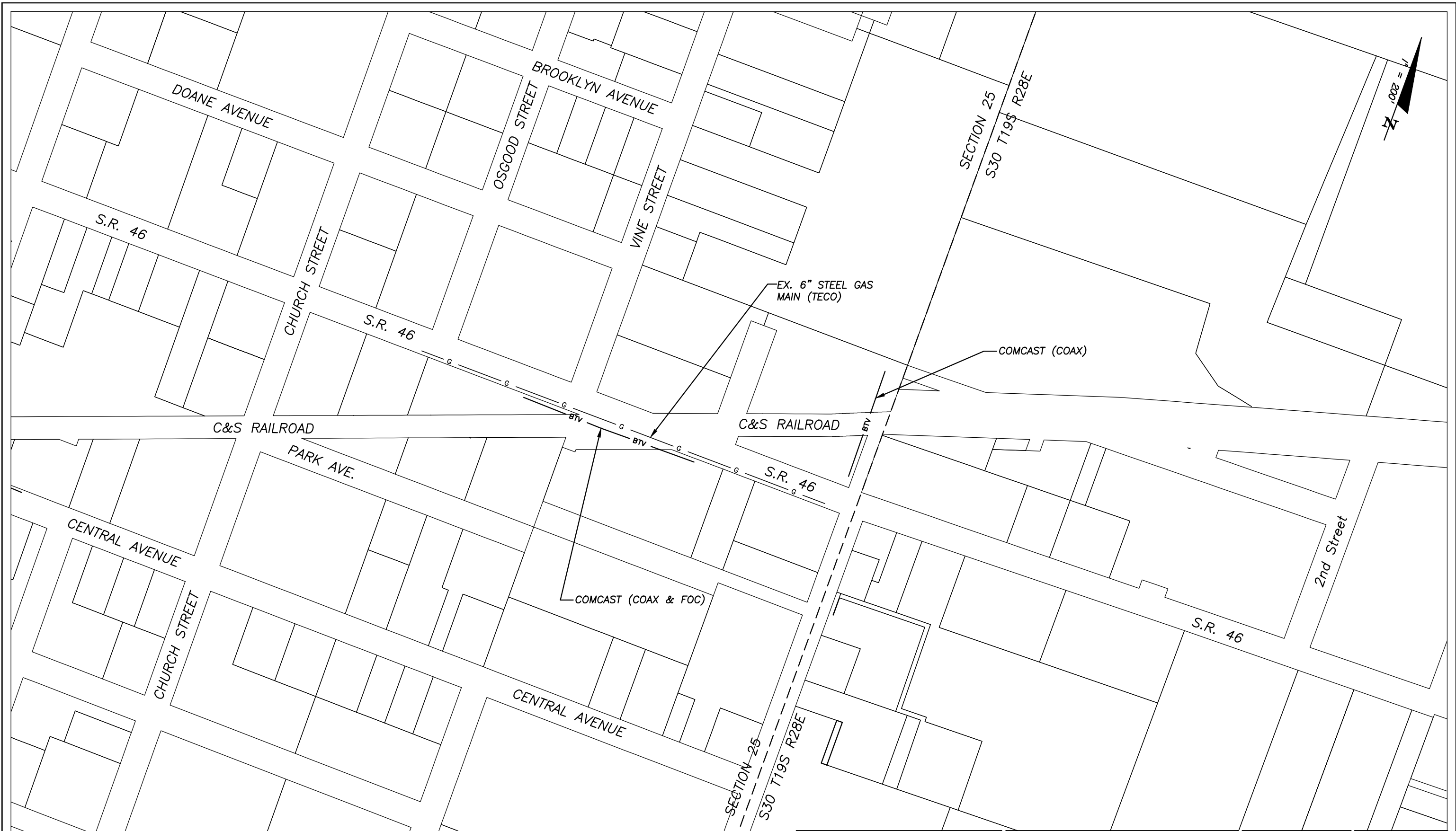
SECTION 25, TOWNSHIP 19S, RANGE 27E

**BESH**  
 BUSH BROTHERS SURVEYING & LAND PLANNERS  
 ENGINEERS • SURVEYORS • LAND PLANNERS  
 350 North Sinclair Ave.  
 Tavares, Florida 32778  
 www.besh.com  
 Office: 352.343.8481  
 Fax: 352.343.8495  
 Certificate of Authorization Number: 27029



LAKE WEKIVA TRAIL PROJECT  
 PLAN SHEET 10

DUANE K. BOOTH, P.E.  
 REG. ENG. #44631  
 DATE: 5-24-2012  
 JOB NO. 121012-0001

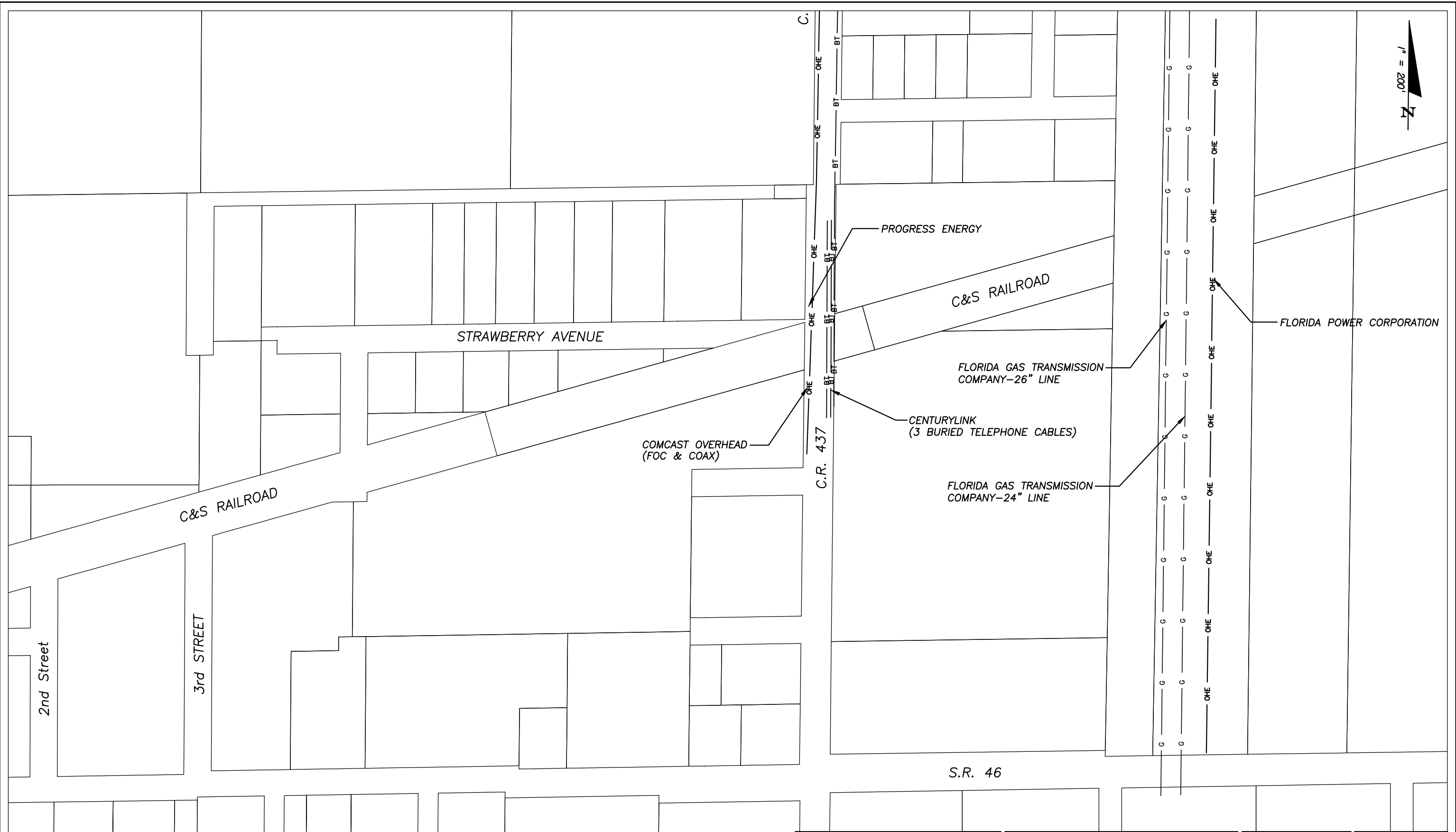


SECTION 25, TOWNSHIP 19S, RANGE 27E  
 SECTION 30, TOWNSHIP 19S, RANGE 28E

**BESH**  
 BENTON & BOWEN SURVEYING & LAND PLANNING  
 ENGINEERS • SURVEYORS • LAND PLANNERS  
 350 North Sinclair Ave.  
 Tallahassee, Florida 32310  
 www.besh.com  
 Office: 904.343.6881  
 Fax: 904.343.6895  
 Certificate of Authorization Number: 27029

LAKE WEKIVA TRAIL PROJECT  
 PLAN SHEET 11

DUANE K. BOOTH, P.E.  
 REG. ENG. #44631  
 DATE: 5-24-2012  
 JOB NO. 121012.0001



SECTION 30, TOWNSHIP 19S, RANGE 28E

**BESH**  
 ENGINEERS • SURVEYORS • LAND PLANNERS  
 350 North Sinclair Ave.  
 Tavares, Florida 32778  
 www.beshinc.com  
 Office: 352-343-6881  
 Fax: 352-343-6955  
 Certificate of Authorization Number: 27029

LAKE WEKIVA TRAIL PROJECT  
 PLAN SHEET 12

DUANE K. BOOTH, P.E.  
 REG. ENG. #44631  
 DATE: 5-24-2012  
 JOB NO. 121012.0001



SECTIONS 29-30, TOWNSHIP 19S, RANGE 28E

**BESH**  
 BOOTH, KEN, BOOTH, DUANE, K. & COMPANY, P.C.  
 ENGINEERS • SURVEYORS • LAND PLANNERS

350 North Sinclair Ave.  
 Tavares, Florida 32778  
 www.besh.com

Office: 352.343.8481  
 Fax: 352.343.8495  
 Certificate of Authorization Number: 27029

LAKE WEKIVA TRAIL PROJECT

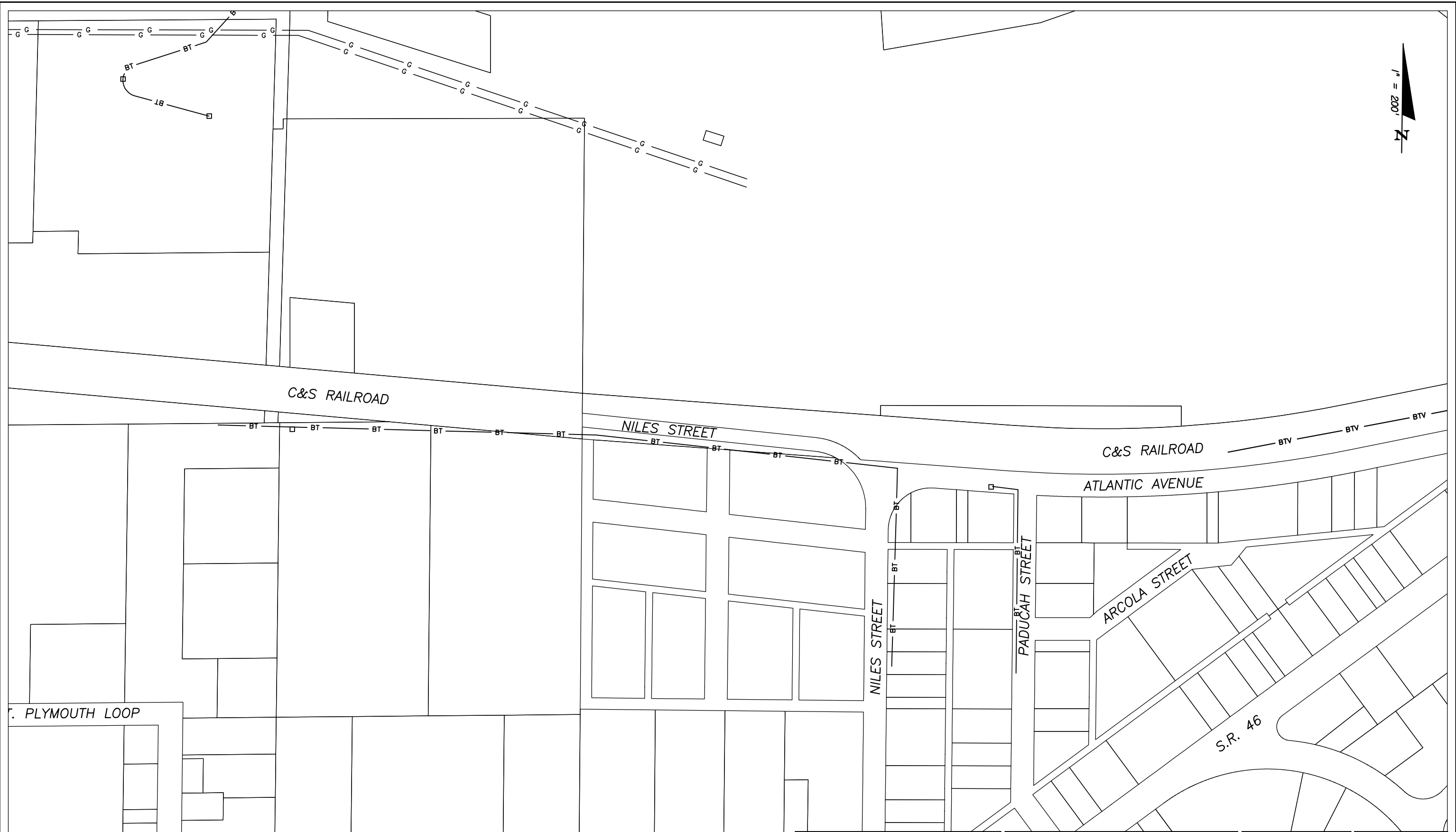
PLAN SHEET 13

DUANE K. BOOTH, P.E.  
 REG. ENG. #44631

DATE: 5-24-2012

JOB NO. 121012.0001



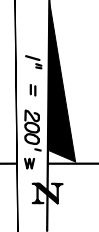
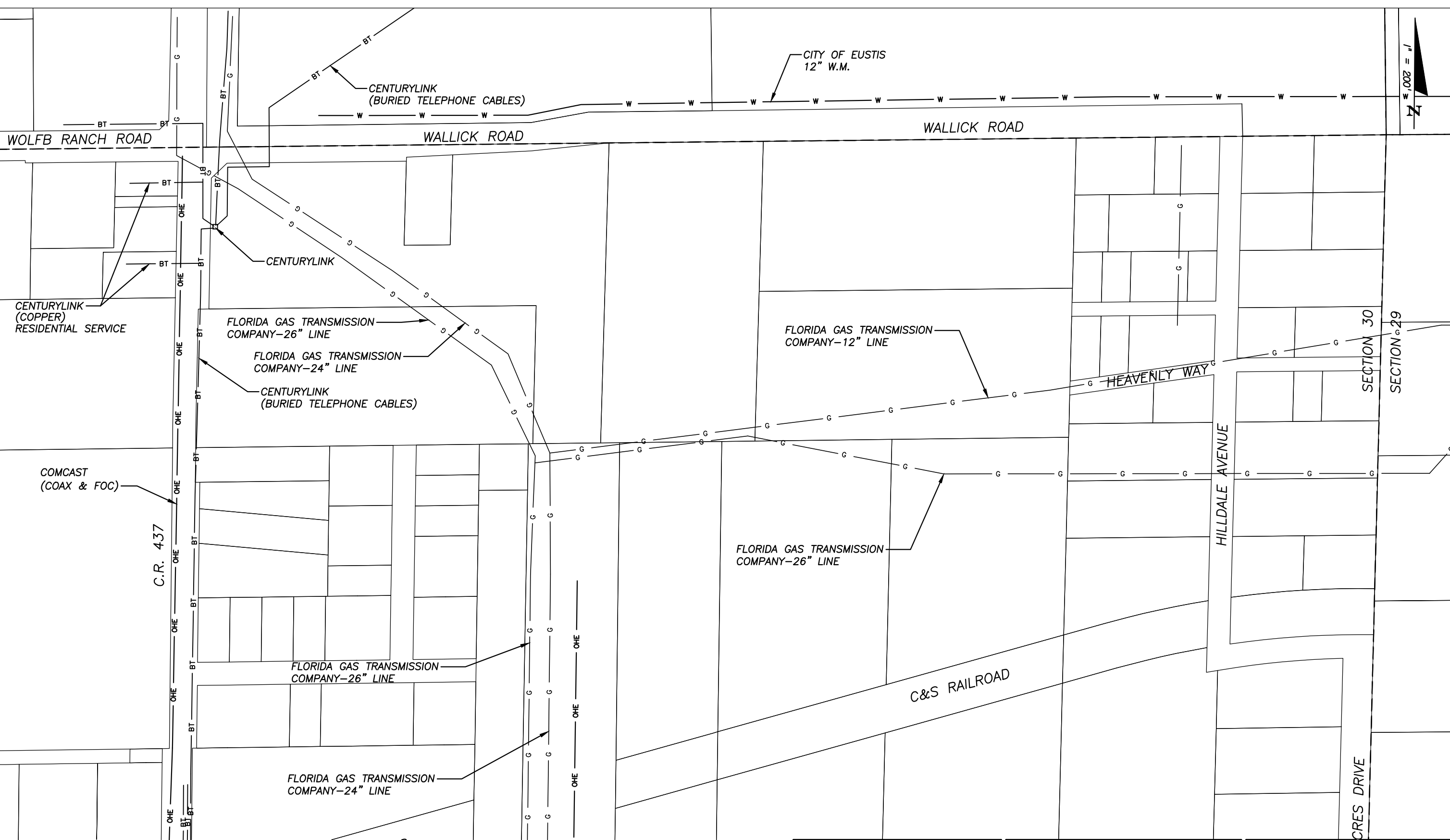


SECTION 29, TOWNSHIP 19S, RANGE 28E

**BESH**  
ENGINEERS • SURVEYORS • LAND PLANNERS  
350 North Sinclair Ave.  
Tavares, Florida 32778  
www.besh.com  
Office: 352-343-8481  
Fax: 352-343-8655  
Certificate of Authorization Number: 27029

LAKE WEKIVA TRAIL PROJECT  
PLAN SHEET 14

DUANE K. BOOTH, P.E.  
REG. ENG. #44631  
DATE: 5-24-2012  
JOB NO. 121012-0001

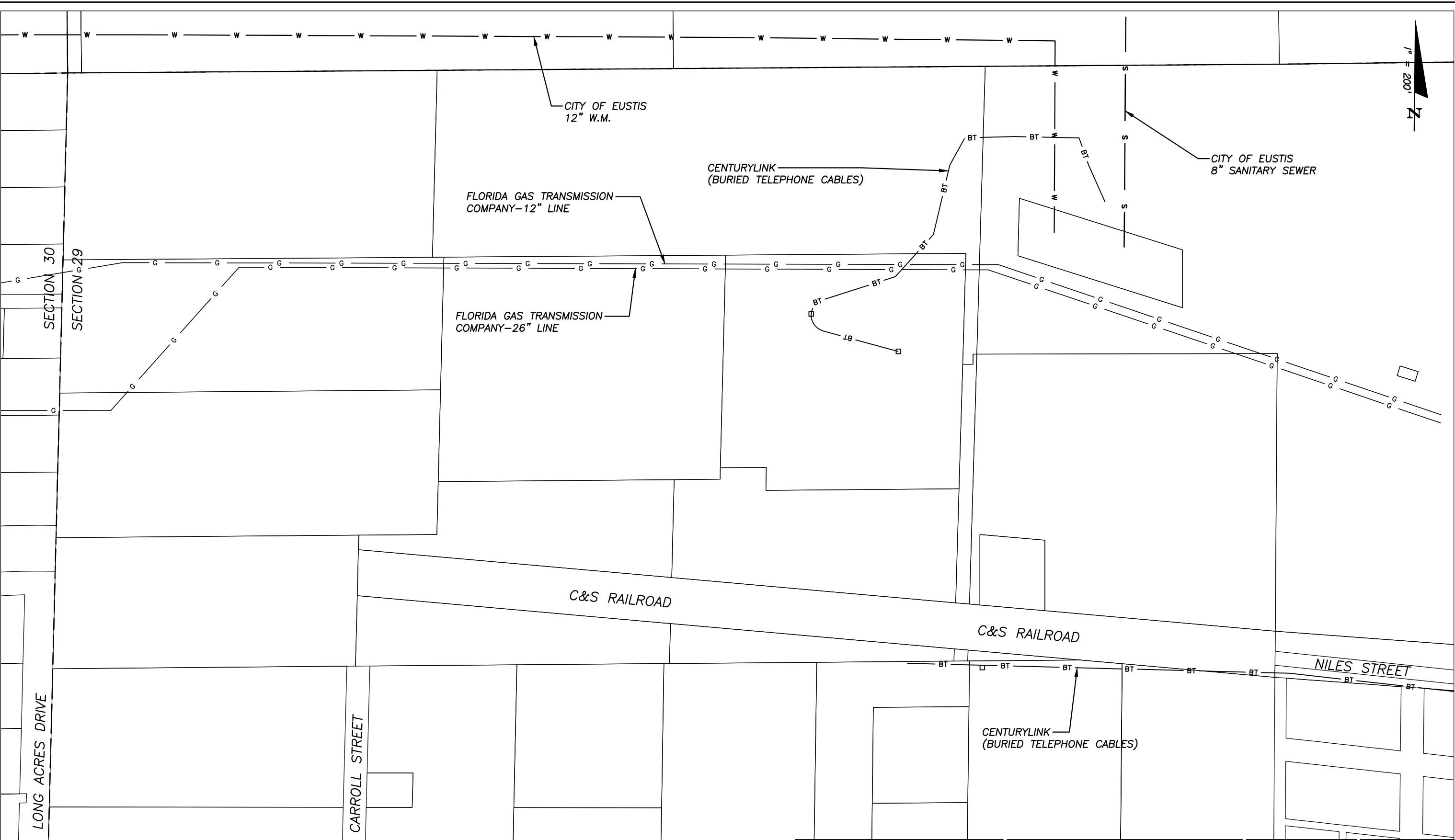
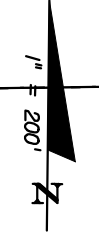


SECTION 30, TOWNSHIP 19S, RANGE 28E

**BESH**  
**BENTON & BOWEN ENGINEERING & SURVEYING, INC.**  
 ENGINEERS • SURVEYORS • LAND PLANNERS  
 350 North Sinclair Ave.  
 Tallahassee, Florida 32310  
 www.beshinc.com  
 Office: 904.243.8481  
 Fax: 904.243.8499  
 Certificate of Authorization Number: 27029

LAKE WEKIVA TRAIL PROJECT  
 PLAN SHEET 15

DUANE K. BOOTH, P.E.  
 REG. ENG. #44631  
 DATE: 12-10-2015  
 JOB NO. 121012.0001

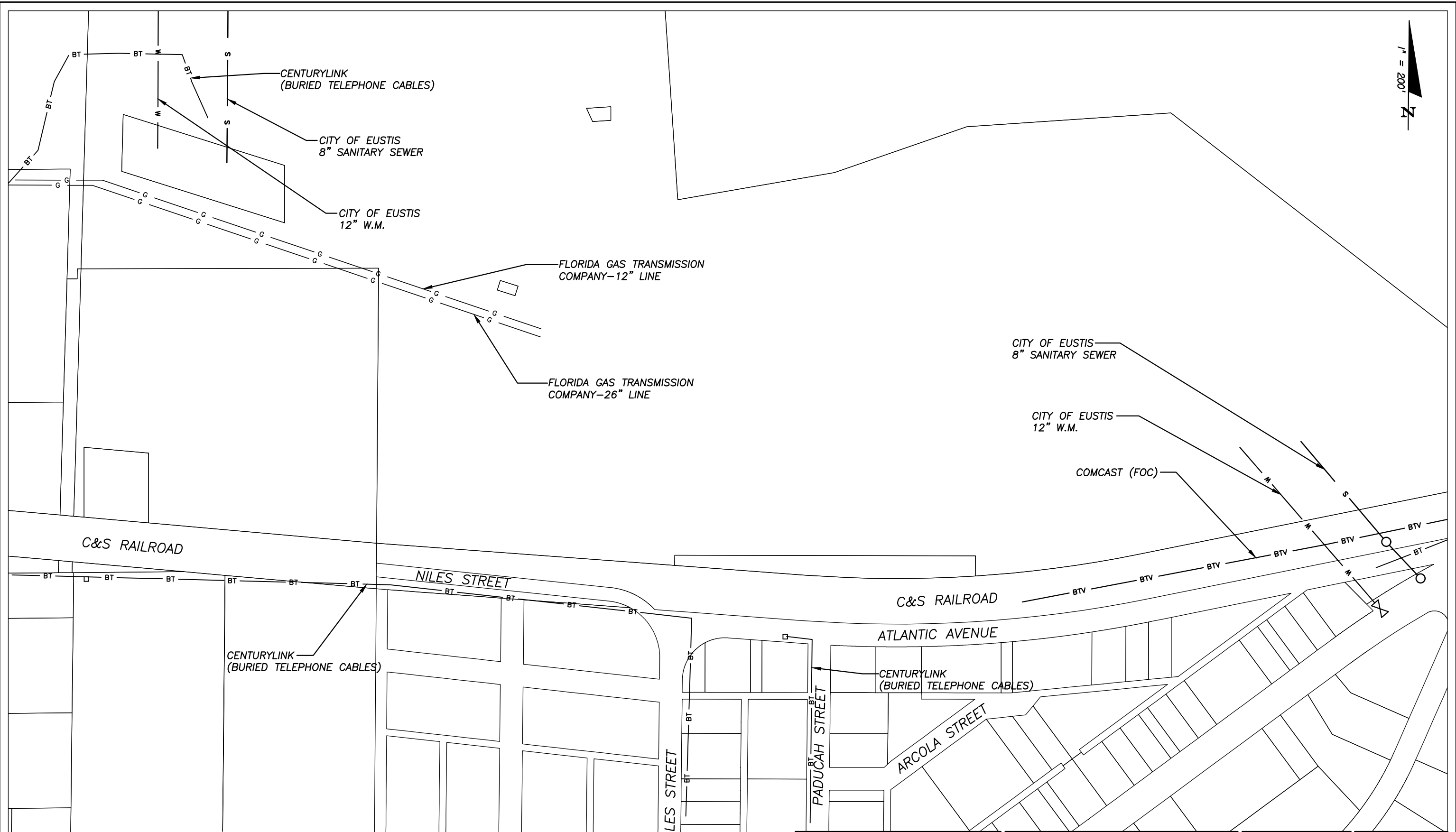
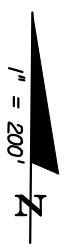


SECTION 29, TOWNSHIP 19S, RANGE 28E

**BESH**  
 BUSHNELL SURVEYING & LAND PLANNING  
 ENGINEERS • SURVEYORS • LAND PLANNERS  
 350 North Sinclair Ave.  
 Tavares, Florida 32778  
 www.besh.com  
 Office: 352-343-8881  
 Fax: 352-343-8999  
 Certificate of Authorization Number: 27029

LAKE WEKIVA TRAIL PROJECT  
 PLAN SHEET 16

DUANE K. BOOTH, P.E.  
 REG. ENG. #44631  
 DATE: 12-10-2015  
 JOB NO. 121012.0001

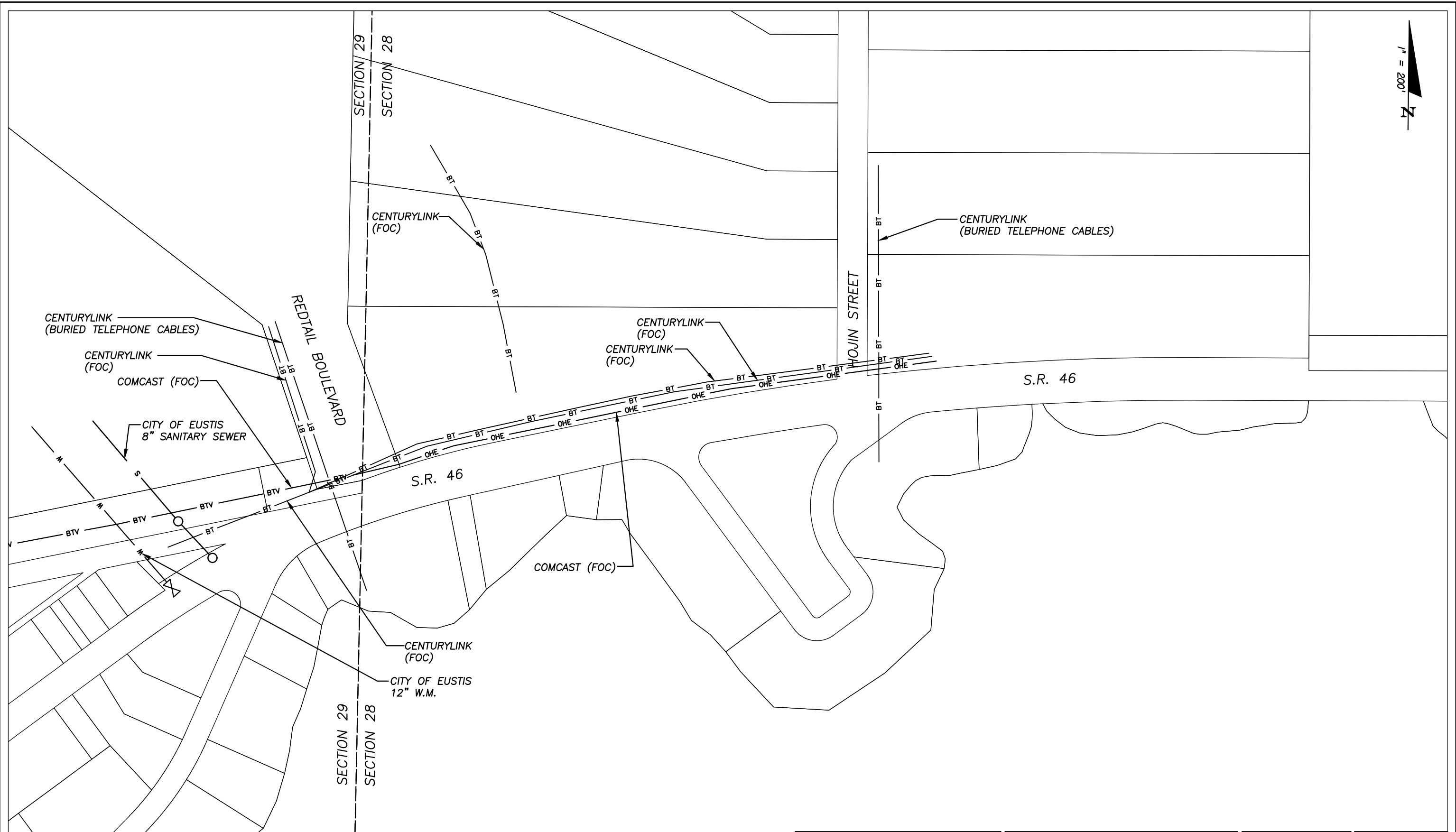


SECTION 29, TOWNSHIP 19S, RANGE 28E

**BESH**  
 SOUTH FLORIDA  
 ENGINEERS • SURVEYORS • LAND PLANNERS  
 350 North Sinclair Ave.  
 Tallahassee, Florida 32310  
 www.beshfl.com  
 Office: 904.343.8481  
 Fax: 904.343.8499  
 Certificate of Authorization Number: 27029

LAKE WEKIVA TRAIL PROJECT  
 PLAN SHEET 17

DUANE K. BOOTH, P.E.  
 REG. ENG. #44631  
 DATE: 12-10-2015  
 JOB NO. 121012.0001



SECTIONS 28/29, TOWNSHIP 19S, RANGE 28E

**BESH**  
 BUSHNERS ENGINEERING & SURVEYORS • LAND PLANNERS  
 350 North Sinclair Ave.  
 Tavares, Florida 32778  
 www.besh.com  
 Office: 352-343-6881  
 Fax: 352-343-6955  
 Certificate of Authorization Number: 27029

LAKE WEKIVA TRAIL PROJECT

---

PLAN SHEET 18

DUANE K. BOOTH, P.E. REG. ENG. #44631
DATE: 12-10-2015
JOB NO. 121012-0001