



SafeAccess

A SAFE SCHOOLS TRANSPORTATION STUDY

Windy Hill Middle School Clermont, FL



August 2012



Windy Hill Middle School

Windy Hill Middle School Snapshot

January 12, 2012

Grades: 6th through 8th

Total Students:	1,085
<ul style="list-style-type: none"> ■ Provided Bus Transportation : ■ Not Provided Bus Transportation: ■ Buses assigned to school (19 Regular, 5 ESE) 	<p>792</p> <p>293</p> <p>24</p>

Students Living within the "Walk Zone":	252
<ul style="list-style-type: none"> ■ Provided Bus Transportation: ■ Not Provided Bus Transportation: 	<p>132</p> <p>120</p>

Observation Day (Sunny)	
<ul style="list-style-type: none"> ■ Walkers: ■ Bike Riders: 	<p>25</p> <p>0</p>

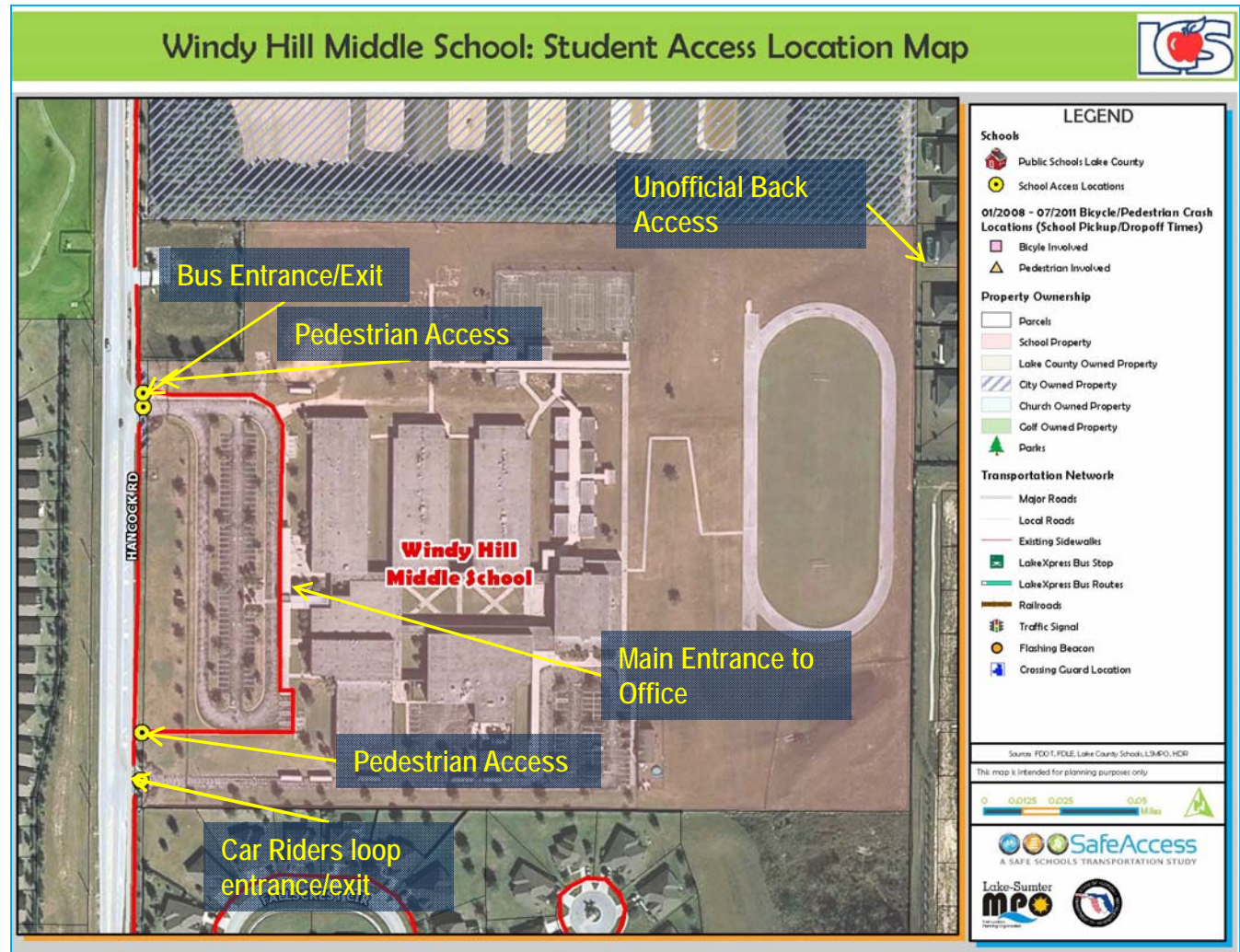


- ✓ Windy Hill Middle School website – Click [here](#)
- ✓ City of Clermont website – Click [here](#)
- ✓ Lake County Schools website – Click [here](#)

Windy Hill Middle School

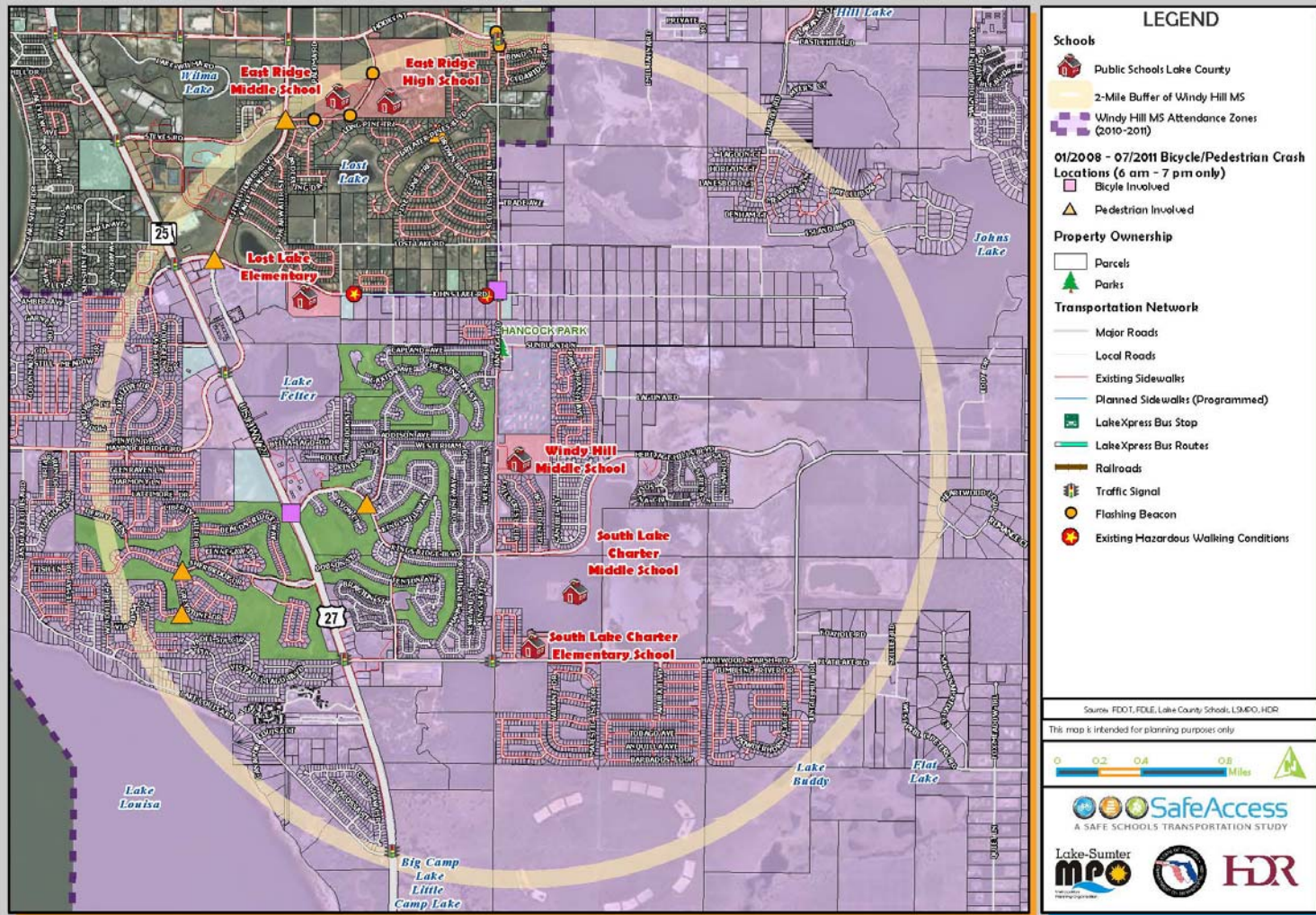
Findings:

- ✓ Approximately 50% of students within the 2 mile walk zone are bused.
- ✓ There is one car drop-off / pick-up area, it is separate from the bus loop.
- ✓ Buses park in the car drop-off / pick-up area during the day
- ✓ Walking access allowed at multiple points
- ✓ There is a dedicated easement for school access at the rear of the property, but it is currently fenced. Students have been observed climbing the fence



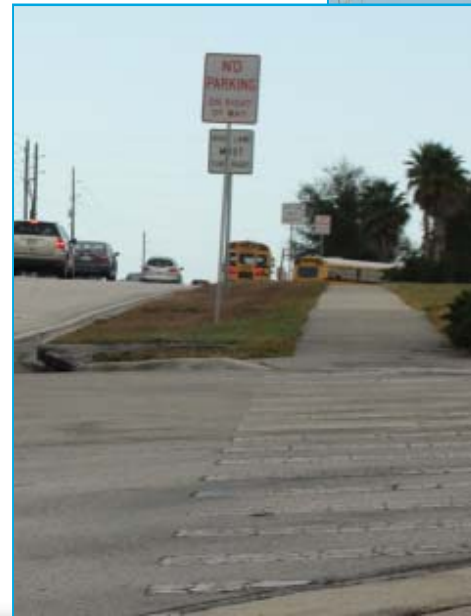
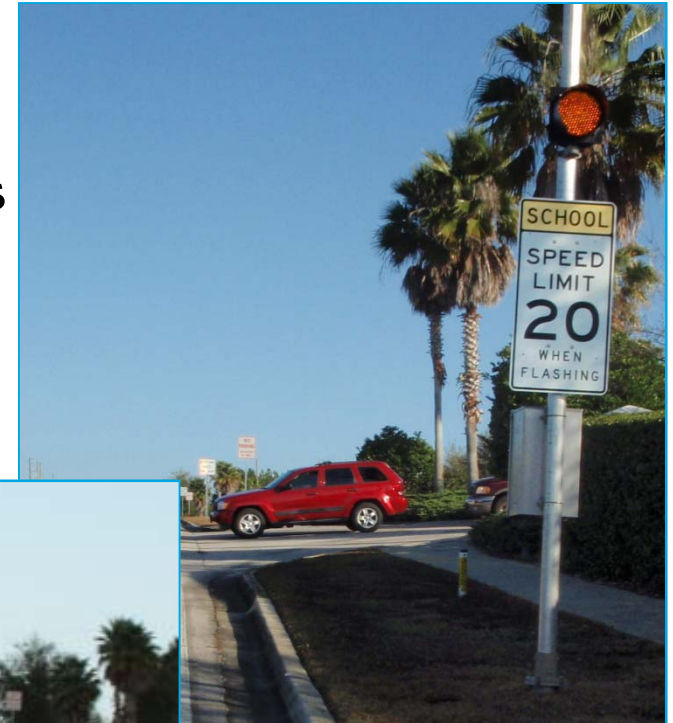
Attendance and 2-Mile "Walk" Zone Map

Windy Hill Middle School: Attendance and 2-Mile "Walk" Zone Map



Arrival and Dismissal Schedule

- 8:45 am: Teacher Supervision Begins
- 9:00 am: Gates Open, 19 Regular Buses, 5 ESE Buses, 6/7 Bus Loading Positions
- 9-9:15 am: Breakfast is Offered (100+)
- 9:15 am: School Start Time
- 4:00 pm: Release time – buses generally come in 2 groups/waves
- 4:20 pm: Gates Close



Note: Students are released one hour early on Wednesdays

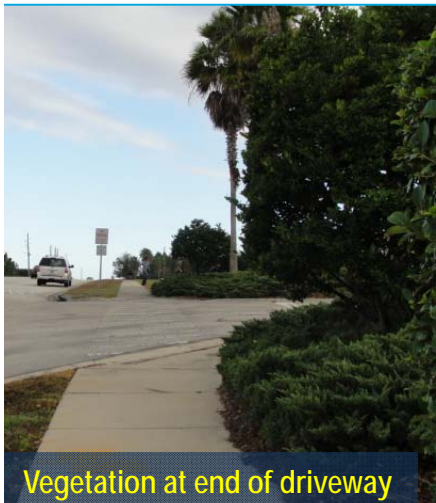


Findings:

- ✓ The bus loading and unloading is organized and efficient, no off-site queuing was observed
- ✓ Buses park in the car drop-off / pick-up area after morning drop-off, this can create conflicts with nearly late or late drop-off activities, or if the drop-off queue is slow to clear, this is an issue in the AM
- ✓ Groups of buses arrive in two waves

Findings: Morning Observations

- ✓ Despite teacher supervision beginning at 8:45 AM, many parents hold their children in their vehicles until the gate opens at 9:00 AM, which creates additional queuing
- ✓ Car queue was not observed to spill into the street during the morning observations
- ✓ Buses park in the car drop-off/pick-up area for the day. This creates potential issues with buses trying to enter and park while cars are still trying to enter/exit. One vehicle was observed to be driving in the grass on the right side in order to enter the drop-off/pick-up area.



Vegetation at end of driveway

- ✓ Existing landscaping adjacent to the driveway may impede site distance and visibility for exiting traffic



Morning queue at drop-off



Bus entering drop-off to park as cars are still queuing to leave

Afternoon Observations:

- ✓ Queue for pick-up briefly spilled onto adjacent street
- ✓ Buses leave before pick-up begins as they also serve the elementary school
- ✓ Most of the queue was accommodated on the school site, and the pick-up operated smoothly



Afternoon queue spilling onto street



Cars queued at pick-up area



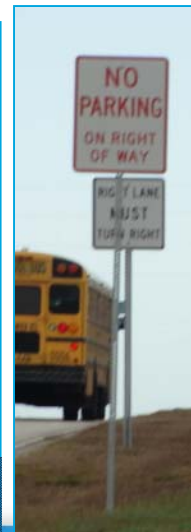
Afternoon queue

Remote Drop-off/Pick-up



Findings / Recommendation:

- ✓ Several vehicles were observed dropping students off from the turn lane, or were pulled off into the grass shoulder
- ✓ Some parents were observed to use the empty lot driveway to pick-up students who exited the school site as walkers
- ✓ Coordinate for enforcement of no parking





School Existing Conditions:

- ✓ Approximately 20 to 30 students were observed walking, however some of these students were picked up just outside of the school. There was one cyclist observed.
- ✓ Most students were observed entering from the southern gate, but exiting from the northern gate. Several students did not use the sidewalk at the northern gate, but went around the landscaping.
- ✓ The crosswalk at the bus loop entrance is faded/missing
- ✓ The crosswalk at the drop-off pick-up area is faded
- ✓ The bicycle parking is well placed, but a misplaced sign says bicycles are prohibited

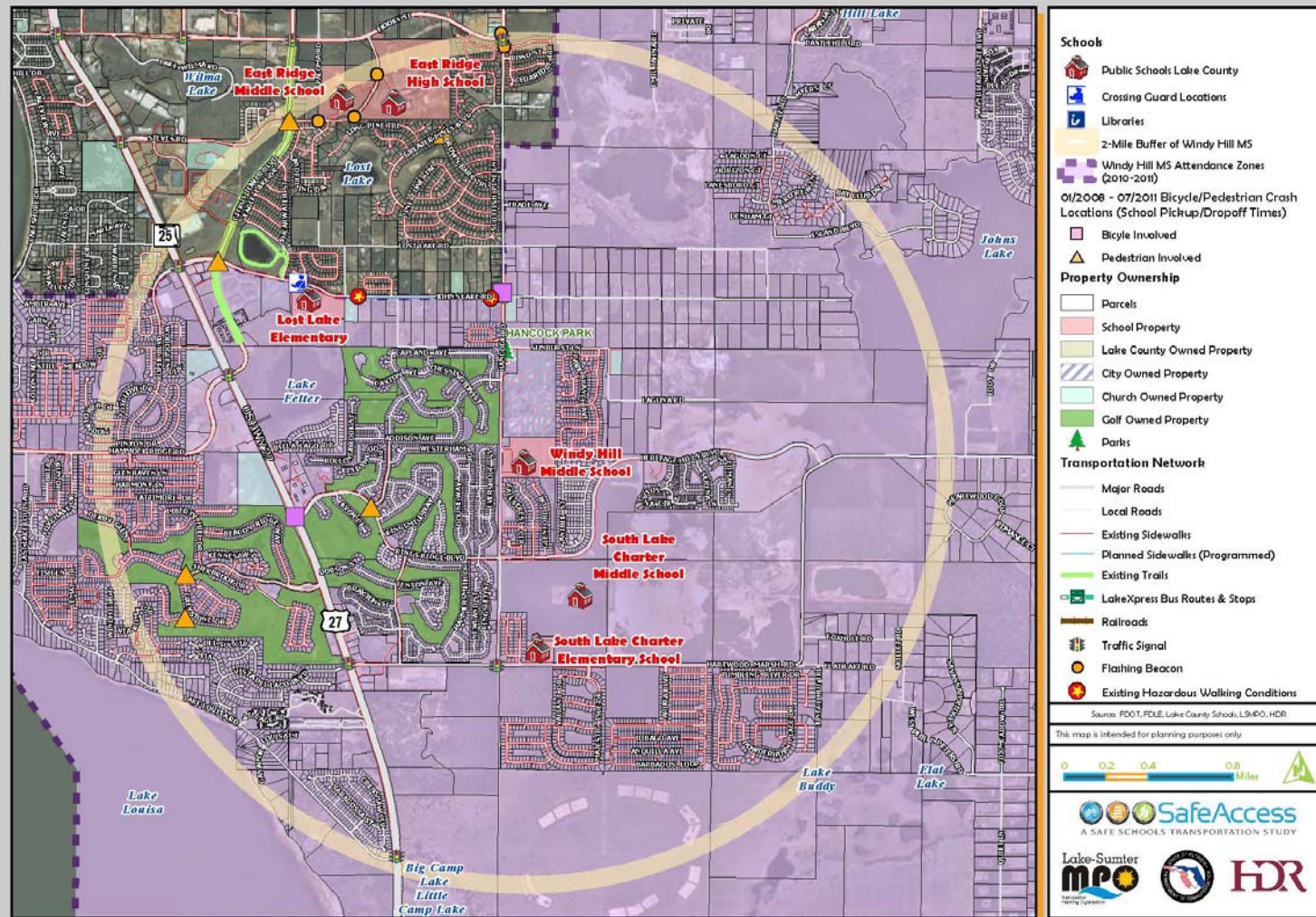


Recommendations

- ✓ Restore/add FDOT ladder style crosswalks at school driveways
- ✓ Coordinate with LCS to upgrade bicycle parking and relocate sign prohibiting bicycles
- ✓ The school staff noted that there is an access point at the rear of the school that is currently blocked, but it is sometimes used by students who climb the fence. School staff reported that parents sometimes provide a ladder to facilitate this. Although not observed, the crossing area is obvious, the house adjacent to the school has a ladder in the yard, and it is at an existing easement established with the subdivision to access the school. A gate could be provided to allow informal access, or a paved connection could be made.



Windy Hill Middle School: Existing Conditions Map

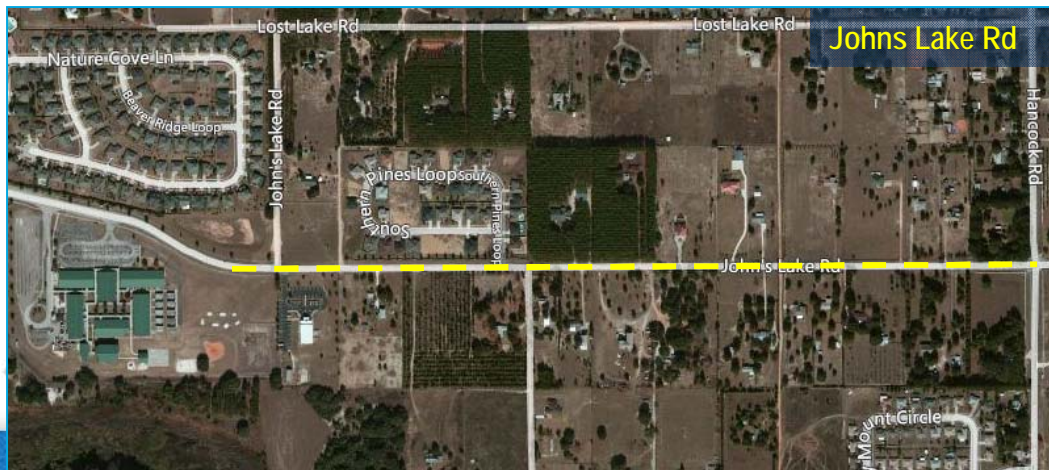


Findings:

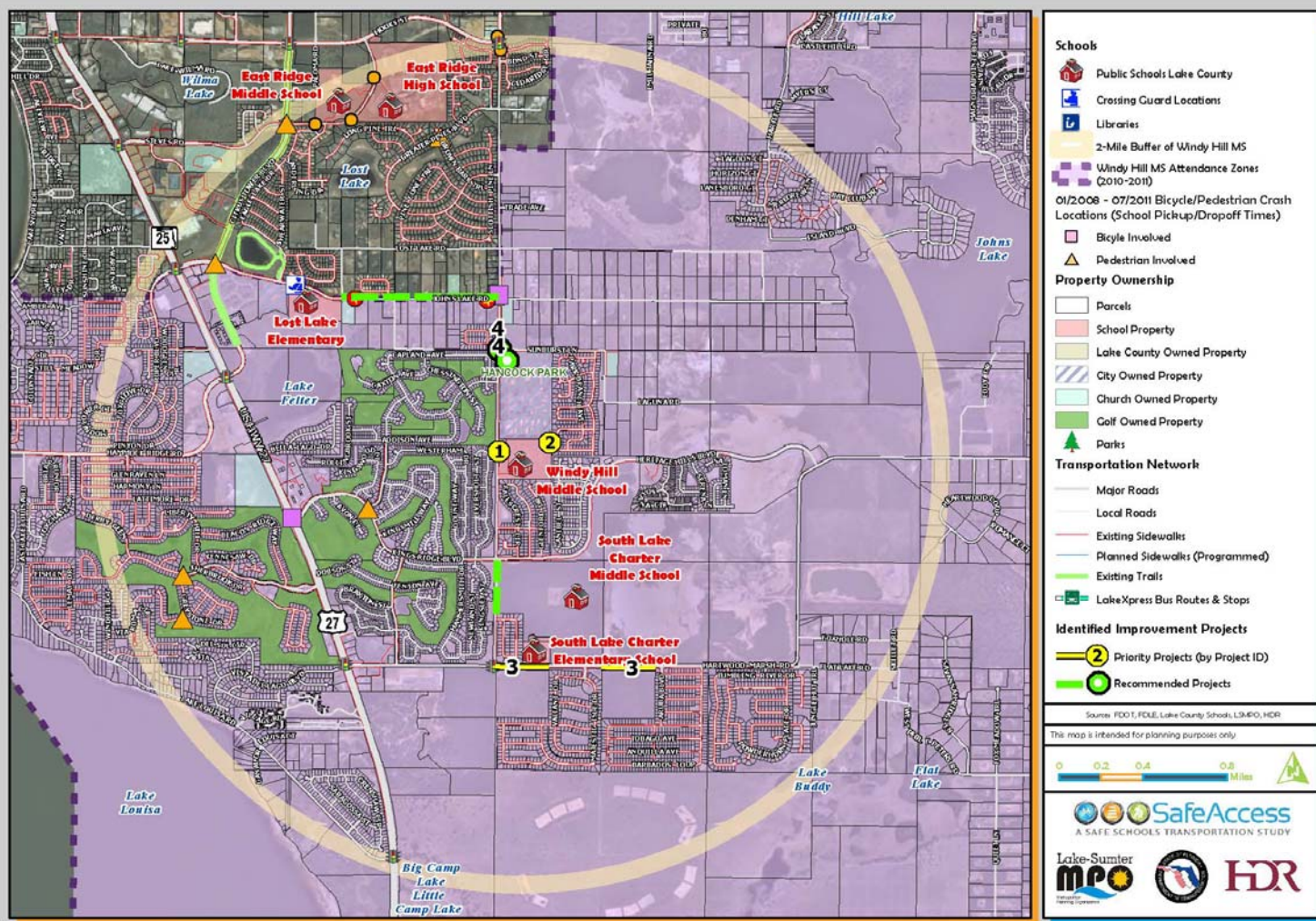
- ✓ Lake County has a planned project to improve Johns Lake Rd from Lost Lake Elementary to Hancock Rd in 2014. This improvement will widening the existing travel lanes, conversion to a curb and gutter section and the addition of sidewalks.
- ✓ Lake County has an intersection improvement scheduled for 2012 at Hancock Rd and Hartwood Marsh Rd. This improvement may include the addition of sidewalk in the southeast quadrant of the intersection.

Recommendations:

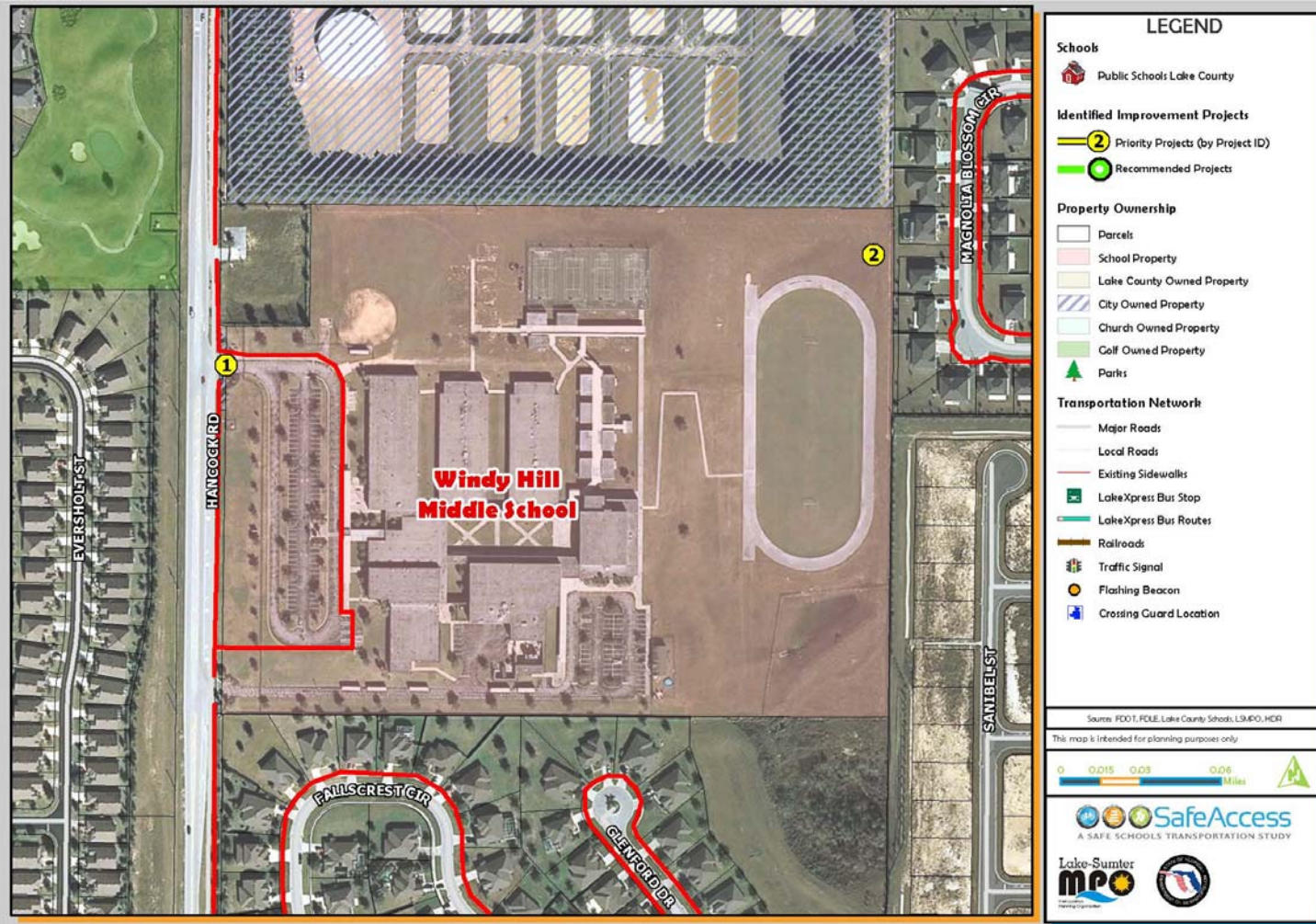
- ✓ Coordinate with the County on the planned improvement of these roadways to included needed school projects or elements.



Windy Hill Middle School: Transportation Access Master Plan



Windy Hill Middle School: Priority Projects





SafeAccess

A SAFE SCHOOLS TRANSPORTATION STUDY

Windy Hill Middle School

Recommended Priority Projects

Priority Projects:

1. Restripe and update crosswalks at the two school driveways to the FDOT ladder style crosswalk. Coordinate with adjacent neighborhood on visibility and site distance at drop-off / pick-up driveway with regards to landscaping. Update bicycle parking to hitch style racks and move sign that prohibits bicycles at the bicycle parking area
2. Add a pedestrian connection at the eastern (back) of school to Magnolia Blossom Circle (either just a gate, or a paved path)
3. Construct sidewalk on Hartwood Marsh from Hancock Rd to Regency Hills and from Regency Hills to Aruba Blvd
4. Construct sidewalk on Hancock Road from Sunburst Lane to the existing sidewalks, west side is priority.

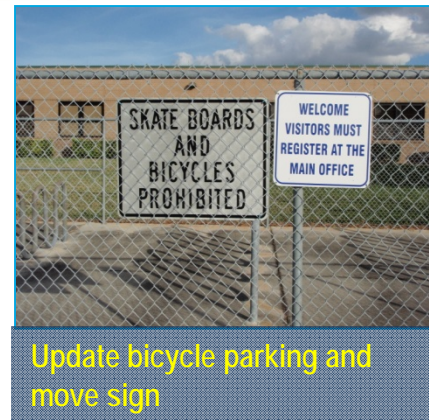


Priority Project #1

Restripe and update crosswalks at the two school driveways, check visibility and site distance at drop-off driveways, check visibility and site distance at drop-off

Findings / Recommendations:

- ✓ The crosswalks at the two school driveways have faded. They should be restriped with FDOT ladder style crosswalks.
- ✓ Visibility seems to be impaired by the landscaping at the drop-off / pick-up driveway - remove or reduce landscaping to improve visibility for vehicles and pedestrians
- ✓ Posted sign prohibiting bicycles should be moved to more appropriate location



Priority Project #2

Add a connection at the eastern (back) of school to Magnolia Blossom Circle.

Findings:

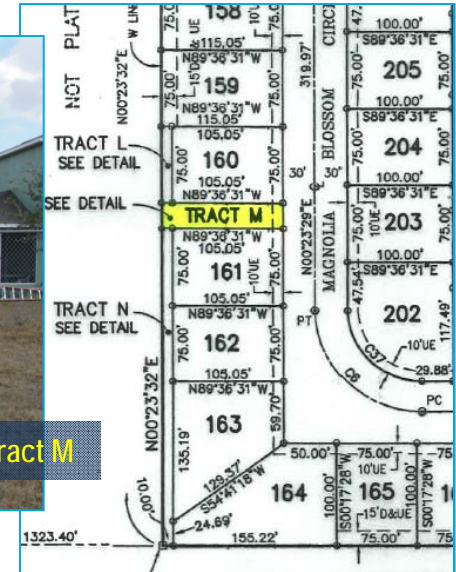
- ✓ At the time it was developed, an area was set aside from Magnolia Blossom Circle to the school site. Students climb the existing fence to access the school. A local parent has facilitated this by having a ladder nearby.

Recommendation:

- ✓ Coordinate with the County, neighborhood and School Board to pave a connection from the track to the fence (or create an unpaved connection), build a pass-through gate, and then connect to Magnolia Blossom Circle.



Add pass through gate and connect here at Tract M



NOTES

1. BEARINGS ARE BASED ON AN ASSUMED MERIDIAN WITH THE NORTH LINE OF THE NW 1/4 OF SECTION 3-23-26 BEING S89°36'56"E.
2. WITH REFERENCE TO CURVILINEAR LOTS, RADIAL LINES HAVE BEEN NOTED WITH (R). ALL OTHER LINES ARE NON-RADIAL (NR).
3. CONCRETE MONUMENTS WILL BE SET AT ALL LOT CORNERS PRIOR TO THE EXPIRATION OF THE BOND OR SURETY FOR THIS SUBDIVISION OR PRIOR TO DEEDING OR BUILDING CONSTRUCTION.
4. MORTGAGEE'S JOINDER AND CONSENT TO DEDICATION IS RECORDED BY SEPARATE INSTRUMENT.
5. TRACTS "L", "N" AND "P" ARE DESIGNATED FOR LANDSCAPING, UTILITIES & IRRIGATION AND OTHER USES THAT CAN BE LEGALLY PERMITTED AS DESIGNATED BY THE OWNERS OF TRACTS "L", "N" AND "P", THEIR SUCCESSORS AND ASSIGNS.
6. **TRACT "M", IS DESIGNATED FOR SCHOOL ACCESS, IRRIGATION AND UTILITIES.**
7. TRACT "O" IS DESIGNATED FOR DRAINAGE, STORM WATER RETENTION AND FURTHER USES THAT CAN BE LEGALLY PERMITTED MAY BE DESIGNATED BY THE OWNERS OF TRACT "O", THEIR SUCCESSORS AND ASSIGNS.
8. TRACT "R" IS DEDICATED BY THIS PLAT TO THE CITY OF CLERMONT AS RIGHT OF WAY FOR CW HARRELL ROAD



Connect approximately here



Findings:

- ✓ There are several sidewalk gaps on Hartwood Marsh Rd. A significant number of students live in the neighborhoods south of Hartwood Marsh Rd, within the 2 mile walk zone.

Recommendation:

- ✓ Work with Lake County to add sidewalks along Hartwood Marsh Rd.



Priority Project #4

Hancock Road Sidewalk (west side) from Sunburst Ln north to existing sidewalk

Findings:

- ✓ There is a gap in the sidewalk on Hancock Rd from just south of Johns Lake Road to Sunburst Lane. There are some students within these neighborhoods that could walk if there were sidewalks.

Recommendations:

- ✓ Construct sidewalk on Hancock Road from Sunburst Lane to the existing sidewalks, west side is priority.
- ✓ When the future Johns Lake Rd project is complete, add a crosswalk and potentially a crossing guard at Sunburst Ln.



Project Priority	Item	Quantity	Units	Total
1	Crosswalk	94	ft	\$210.00
2	Pass Through Gate	1	Gate	\$600.00
2	Sidewalk	290	ft	\$44,100.00
3	Sidewalk Phase 1	2,664	ft	\$235,300.00
3	Sidewalk Phase 2	2,932	ft	\$256,200.00
4	Sidewalk	428	ft	\$63,100.00

ESTIMATE BASIS AND ASSUMPTIONS:

- Sidewalk estimates based on estimating tool developed for Phase 1, Estimates for all other improvements based on Unit Costs per FDOT Lake County (Area 7) averages (07/2011 - 06/2012).
- Estimate does not include utility relocation costs, utility relocation assumed by others.
- The mobilization costs are based on 15% of the construction cost and estimates include maintenance of traffic costs (15% of construction costs).
- No Regular excavation & embankment to 1 ft depth is assumed
- No R/W Impact
- No specialized landscaping (beyond sodding) is included.
- Sidewalk is assumed to be 5 feet wide, unit given is in linear feet.

Location	Limits	Improvement
Connection at back of school	School to Magnolia Blossom Circle	Add Sidewalk and pass through gate (if initially done as non-paved trail or informal access)
Hartwood Marsh Road	Hancock to Existing sidewalk at Regency Hills	Add Sidewalk
Hartwood Marsh Road	Existing eastern sidewalk at Regency Hills to Aruba Blvd	Add Sidewalk
Hancock Road	Heritage Hills Blvd to existing sidewalk at Hartwood Pines Way	Add Sidewalk
Hancock Road	Sunburst Lane north to existing sidewalk	Add Sidewalk - west side is priority
Cross Guard	Sunburst Lane and Hancock Road (tied to Johns Lake Road project)	Add cross walks, lights and crossing guard when Johns Lake Road sidewalk is complete
Consider Moving Bus Parking		



Windy Hill Middle School

Contact Information

This website represents an ongoing commitment to increase safe access to schools within the Lake~Sumter Metropolitan Planning Organization Planning Area.

Updates to data, and suggestions for programming and project ideas are welcome from all agencies and the general public.

Mike Woods

Project Manager, Transportation Planner

(352) 315-0170

mwoods@lakesumtermpo.com



Mindy Heath, AICP

Consultant Project Manager

(407) 420-4200

Mindy.heath@hdrinc.com



*Promoting Regional
Transportation Partnerships*