



SafeAccess

A SAFE SCHOOLS TRANSPORTATION STUDY

Lost Lake Elementary School Clermont, FL

LOST LAKE ELEMENTARY SCHOOL
10-PT03'30 SAC6PM
16 NO SHCOOL
17-18&19 EARLY RELEASE
26-FCAT NIGHT 6-7'30

August 2012



Lost Lake Elementary School

Lost Lake Elementary School Snapshot

January 12, 2012

Grades: Pre-Kindergarten – 5th

Total Students: 1,103

- Provided Bus Transportation : 579
- Not Provided Bus Transportation: 524
- Buses assigned to school (11 reg, 2 ESE) 13

Students Living within the “Walk Zone”: 494

- Provided Bus Transportation: 226
- Not Provided Bus Transportation: 268

Observation Day (Sunny)

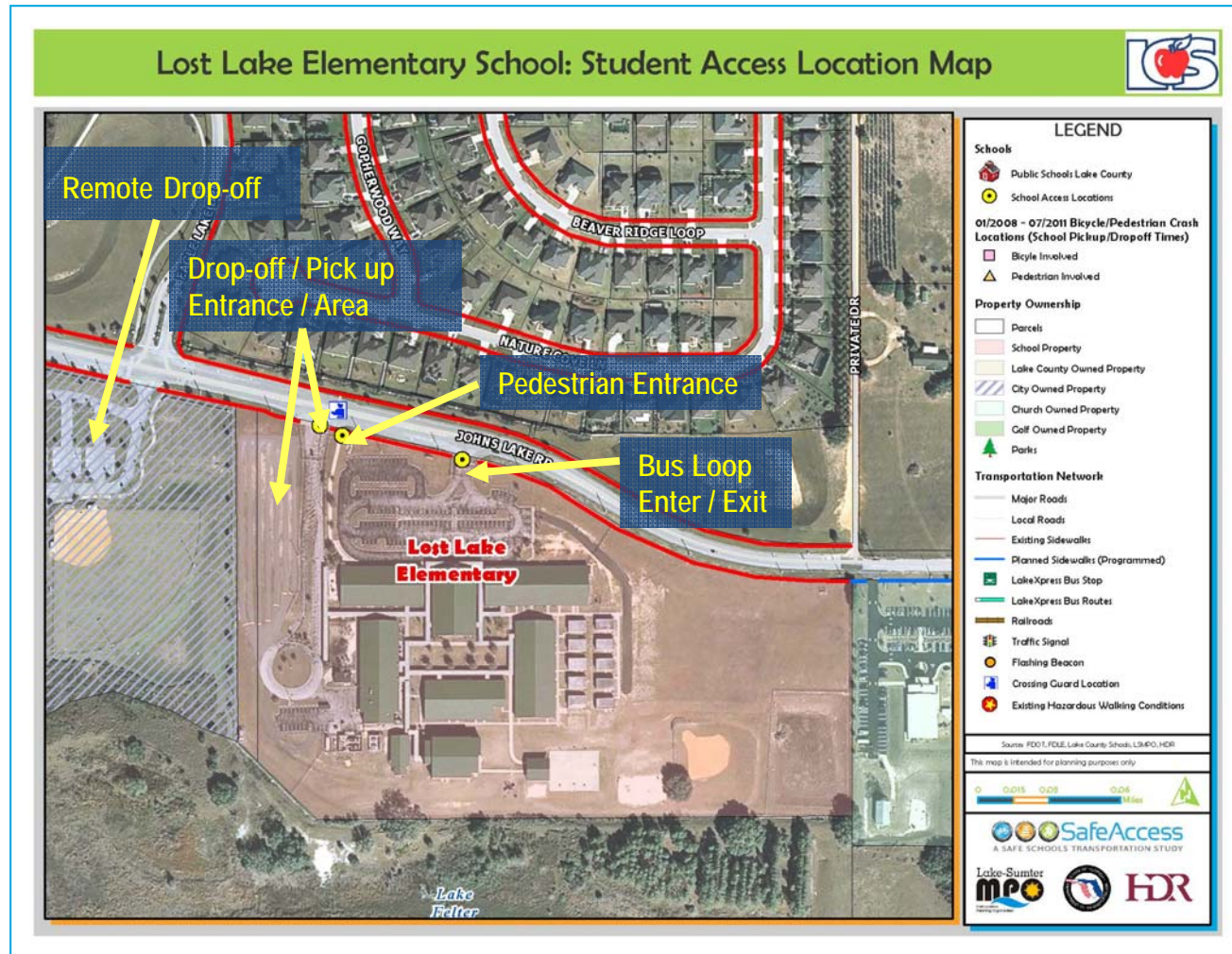
- Walkers: over 100
- Bike Riders: 0



- ✓ Lost Lake Elementary website – Click [here](#)
- ✓ City of Clermont website – Click [here](#)
- ✓ Lake County Schools website – Click [here](#)

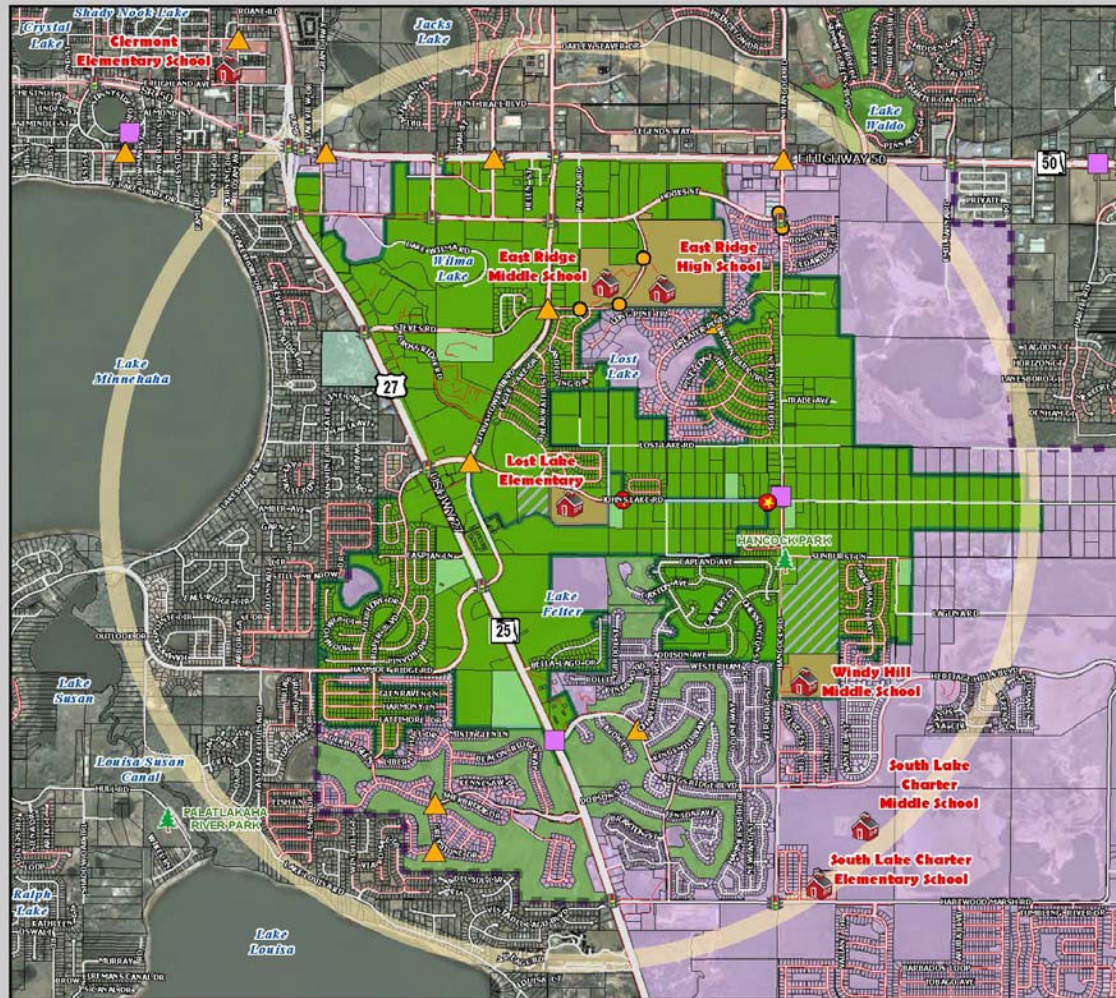
Findings:

- ✓ This school is located with subdivisions to the north and an apartment complex to the west, most arrive by bus or car
- ✓ The drop-off / pick-up queue area has a large onsite storage area
- ✓ The bus loop is separate from the drop-off / pick-up loop, and is through the front parking area
- ✓ There is one pedestrian access point
- ✓ A large number of parents use the adjacent park as a remote pick-up / drop-off area
- ✓ There is no bicycling permitted



Attendance and 2-Mile "Walk" Zone Map

Lost Lake Elementary School: Attendance and 2-Mile "Walk" Zone Map



LEGEND

Schools

- Public Schools Lake County
- 2-Mile Buffer of Lost Lake ES
- Parent Responsibility Zone
- Special Exception Areas
- Lost Lake ES Attendance Zones (2010-2011)

01/2008 - 07/2011 Bicycle/Pedestrian Crash Locations (6 am - 7 pm only)

- Bicycle Involved
- Pedestrian Involved

Property Ownership

- Parcels
- Parks

Transportation Network

- Major Roads
- Local Roads
- Existing Sidewalks
- LakeXpress Bus Stop
- LakeXpress Bus Routes
- Railroads
- Traffic Signal
- Flashing Beacon

Source: FDOT, FCLE, Lake County Schools, LSMPD, HDR

This map is intended for planning purposes only.

0 0.2 0.4 0.8 Miles

SafeAccess
A SAFE SCHOOLS TRANSPORTATION STUDY

Lake-Sumter
mpc

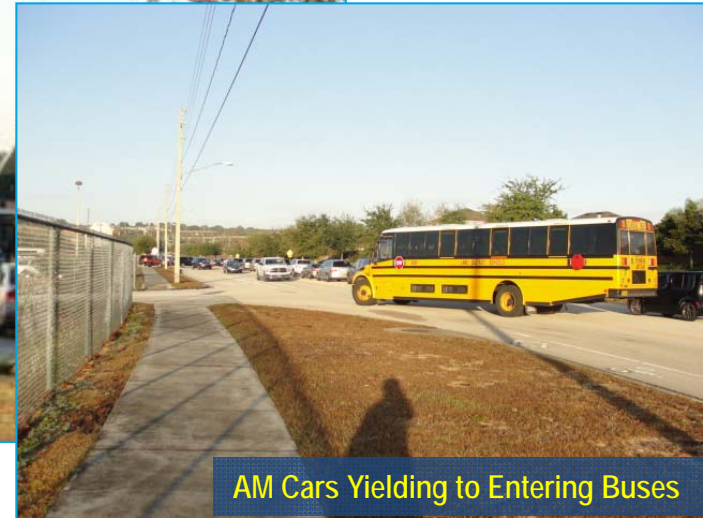
HDR

Arrival and Dismissal Schedule

- 7:00 am:** Breakfast - 200 students attend breakfast on average
- 8:00 am:** Students may be dropped off
- 8:30 am:** School Starts
- 2:45- 3:10 pm:** Release – Staggered for:
Walkers and Car Riders by Grade/Class
- 2:45 – 3:30 pm:** Bus Riders are called by bus as buses arrive
- 6:00 pm:** ELC ends



Note: Students are released one hour early on Wednesdays



Findings:

- ✓ The bus loading and unloading is organized and efficient
- ✓ Buses generally arrive between 8:00 am and 8:20 am, typically two waves
- ✓ Bus queue on observed day was contained onsite
- ✓ Some buses had to briefly enter opposing travel lane to enter bus loop
- ✓ Several left turning buses were 'let out' by other drivers

Findings:

- ✓ The campus has a large queue area that allows for significant queuing
- ✓ The curb-side drop-off works efficiently like most campuses in the district
- ✓ A staff person is required to operate the queue bays
- ✓ Queuing into the load zone is significant - over 1400' to west and 800' to east
- ✓ Driveway exit has long queues and delays
- ✓ Police officers are required to maintain traffic control and flow. Typically school crossing guards or staff are not legally permitted to direct traffic, unless an employee of police force
- ✓ Pick-up queues are organized by grade and operate well



Student Drop-off and Pick-up Recommendations



Recommendations:

- ✓ Study the addition of a signal to replace the requirement of officers, particularly as they are sometimes unavailable or are called away. Signal should only operate during drop-off and pick up times.

Alternatively

- ✓ Brainstorm idea: Consider adding a new inbound driveway to the car lot at the west property line to separate some of the inbound and outbound traffic.
 - ✓ Pros – able to process traffic into stacking area faster
 - ✓ Potentially able to process exiting traffic faster
 - ✓ Cons – Additional driveway for pedestrians to cross
 - ✓ Safety issues with pedestrian / vehicle conflict



AM drop-off at Lake Felter Park

Findings:

- ✓ A number of students (50 or more) and parents park at Lake Felter Park and walk to the school entrance
- ✓ These parents also walk through the congested intersection



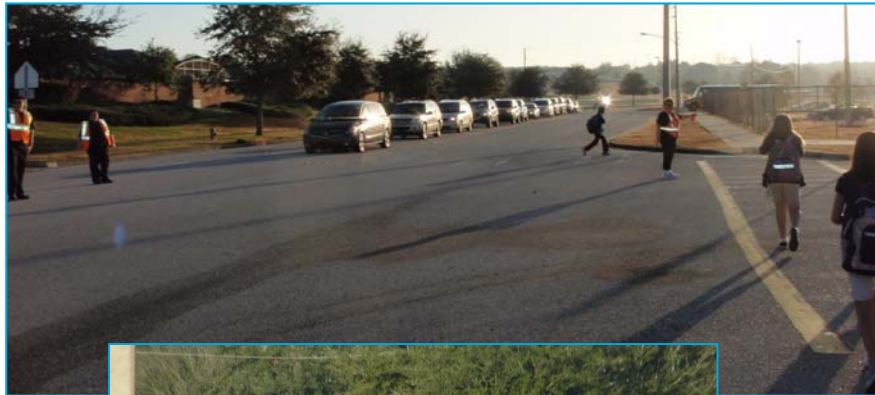
PM exiting traffic towards Lake Felter Park and apartment complex



A SAFE SCHOOLS TRANSPORTATION STUDY

Lost Lake Elementary School

Bicycle/Pedestrian “Walkers” Access



Crossing guard at school drop-off driveway supported by Clermont police to cross Johns Lake Road

School Existing Conditions and Procedures:

- ✓ Walkers released at 2:45 pm
- ✓ Police required to operate driveway and assist with crossing guard
- ✓ Bicycles are not allowed on campus
- ✓ Crosswalks are faded and in need of repainting
- ✓ Sidewalk in front of school is in need of maintenance

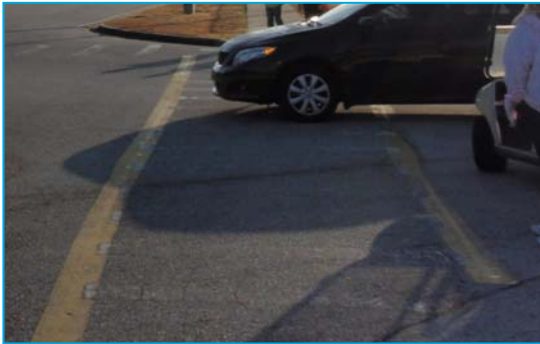




A SAFE SCHOOLS TRANSPORTATION STUDY

Lost Lake Elementary School

Bicycle/Pedestrian “Walkers” Access



Faded crosswalks



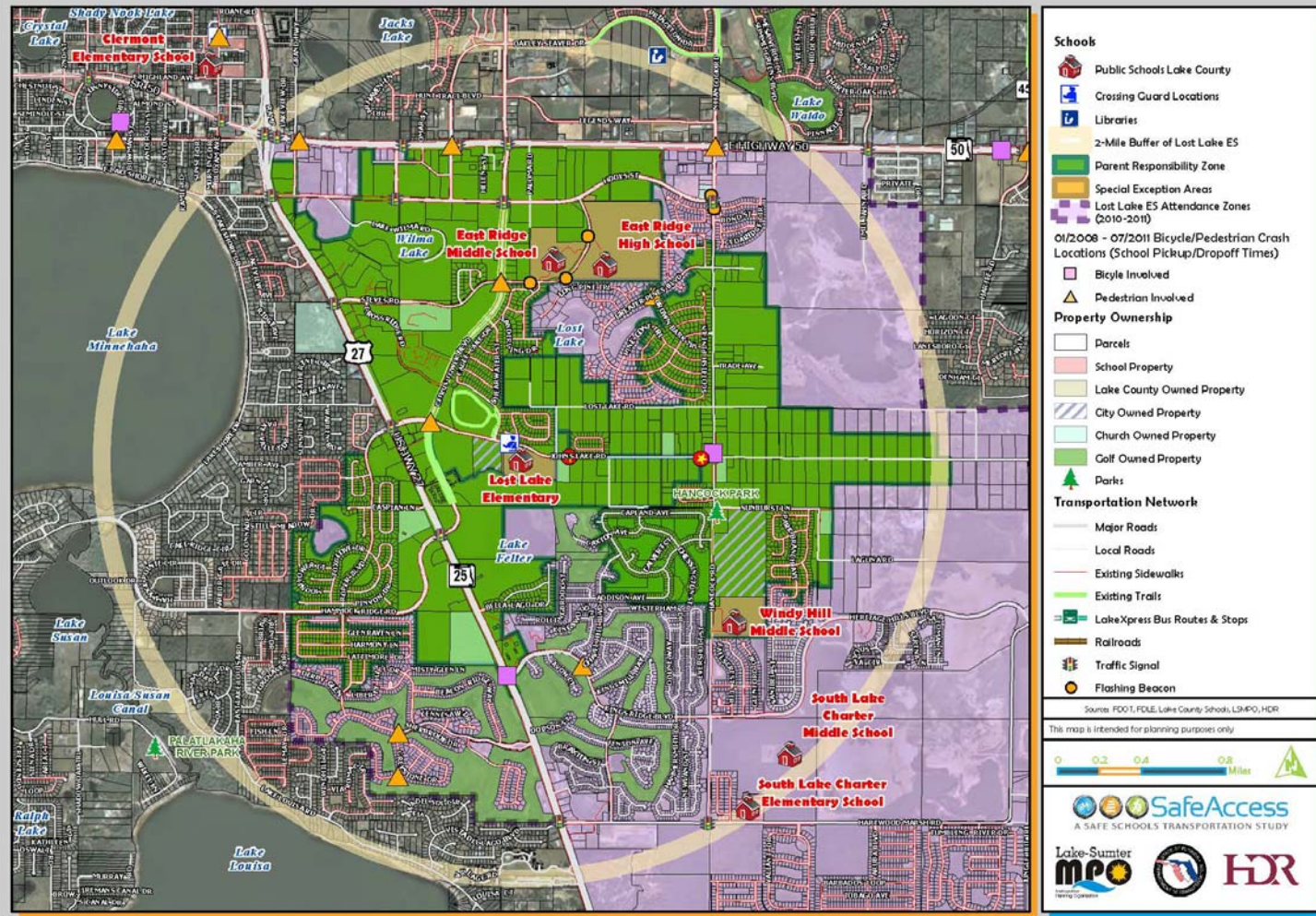
Recommendations:

- ✓ Repaint or refurbish crosswalks and repair sidewalk
- ✓ Continue to enforce the speed limit
- ✓ Add a bicycle path or widen sidewalk from school pedestrian access to apartment complex
- ✓ Consider traffic signal at drop-off / pick-up location



Broken sidewalk in front of school

Lost Lake Elementary School: Existing Conditions Map



Lost Lake Elementary School

Findings:

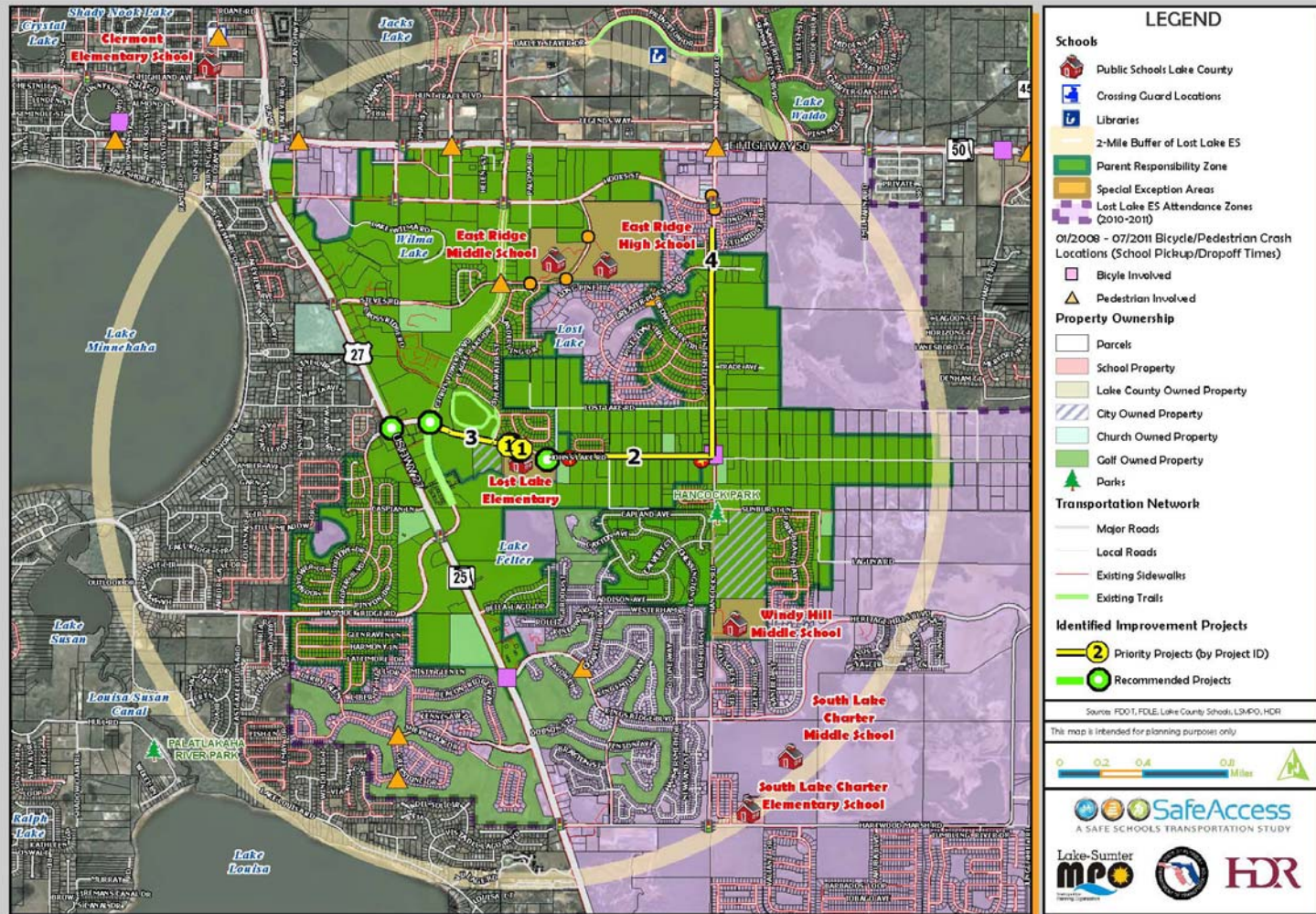
- ✓ Lake County has a planned project to improve Johns Lake Rd from Lost Lake Elementary to Hancock Rd in 2014. This improvement will widen the existing travel lanes, convert to a curb and gutter section and add sidewalks.
- ✓ Lake County has an intersection improvement scheduled for 2012 at Hancock Rd and Hartwood Marsh Rd. This improvement may include the addition of sidewalk in the southeast quadrant of the intersection.

Recommendations:

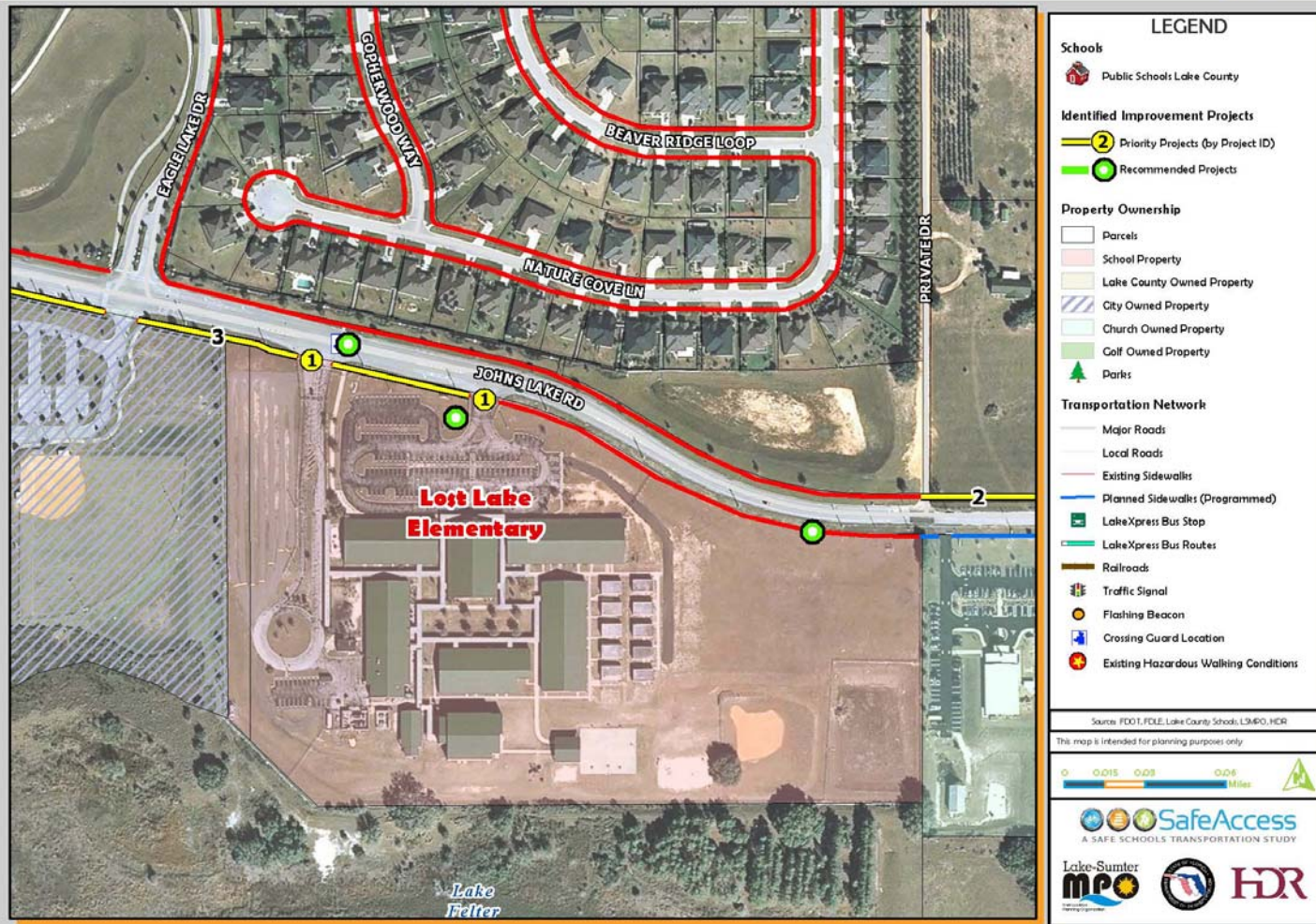
- ✓ Coordinate with the County on the planned improvement of these roadways to included needed school projects or elements.



Lost Lake Elementary School: Transportation Access Master Plan



Lost Lake Elementary: Priority Projects



Lost Lake Elementary School

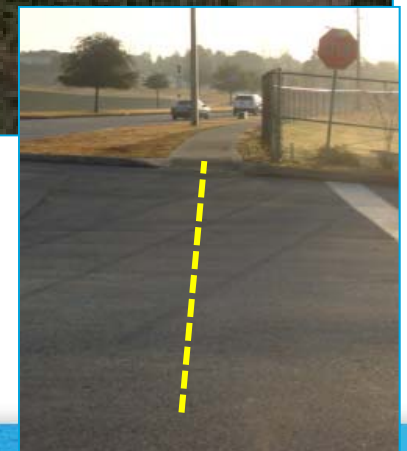
Priority Projects:

1. Update / repaint crosswalks, study signaling intersection
2. Add sidewalk on Johns Lake Road from existing sidewalk to Hancock Road with additional pedestrian access
3. Widen sidewalk on Johns Lake Road from School to Citrus Tower Blvd and add bicycle parking at school
4. Add sidewalk on Hancock Road north to Hook Street



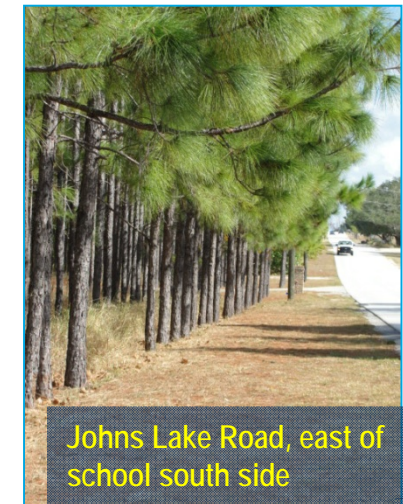
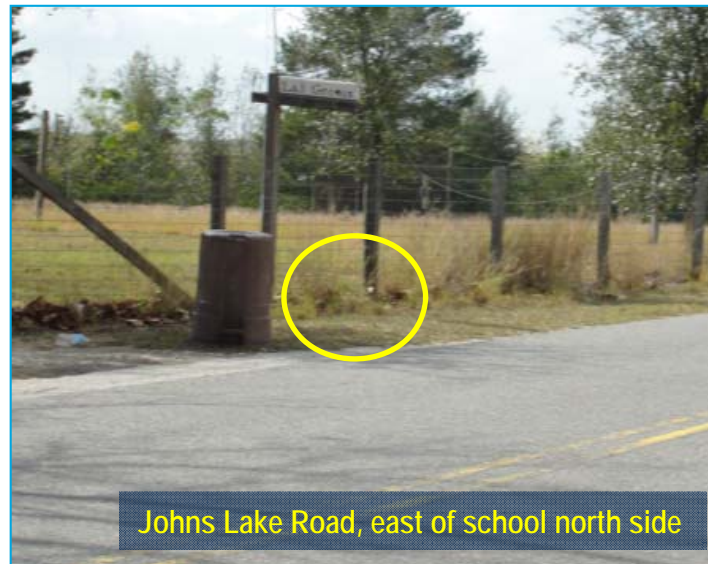
Findings and Recommendations:

- ✓ The existing crosswalks are faded - Update and repaint the crosswalks to FDOT ladder style at the two school driveways and across Johns Lake Rd at the crossing guard.
- ✓ Current queuing at the drop-off area is significant, particularly in the morning. Traffic control is provided by Clermont Police, but they may be called out and unavailable at times. Conduct a study to consider the benefits / drawbacks of a potential signal at the drop-off / pick-up area entrance.



Findings / Recommendations:

- ✓ Currently there is no sidewalk, and fencing is very close to the roadway on Johns Lake Road east of the School. Currently there may be limited ROW.
- ✓ In coordination with Lake County and future roadway projects on Johns Lake Road (or as a stand along project if ROW is available) Construct a sidewalk from the existing sidewalk to Hancock Road.
- ✓ This road is designated a hazardous walk zone due to the close proximity of the fence to the roadway.
- ✓ Lake County is currently pursuing a project along Johns Lake Road.



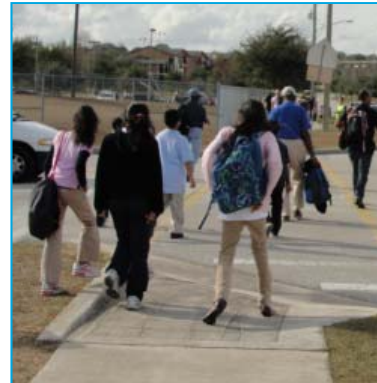
Priority Project #3

Widen Sidewalk on Johns Lake Road

From school drop-off / pick-up to Apartment Complex

Findings / Recommendations:

- ✓ The current standard width sidewalk does not have the capacity for the number of walkers and accompanying parents that travel to the school from the west.
- ✓ Under congested conditions a child on a bicycle may lose control trying to pass pedestrians and enter the roadway, or may strike the pedestrians.
- ✓ The morning roadway traffic queue for the school extends past the apartment complex.
- ✓ (A) Widen sidewalk and restripe with a marked outside bicycle lane, or add a separate bicycle path along the current sidewalk.
- ✓ (B) Add a separate bicycle path from the apartment complex through the park to a new entrance on the schools southwest corner.

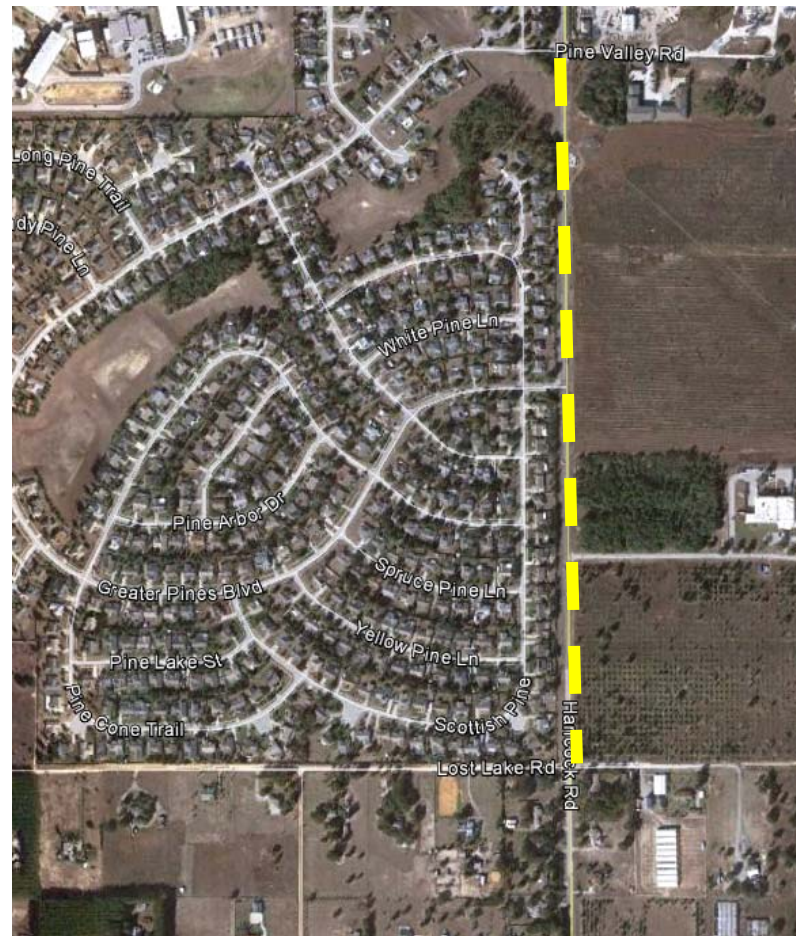


Mark widened sidewalk as bicycle lane to outside, farthest from vehicle travel lane



Findings / Recommendations:

- ✓ There are several local collectors without sidewalks that limit the opportunities for students to walk.
- ✓ Currently there are small sections of sidewalk on Hancock Road at Hook Street, and for one property on the east side at Johns Lake Road.
- ✓ Construct a sidewalk on Hancock Road from Johns Lake Road to Hook Street, priority is on the west side.
- ✓ This project should be staged after the sidewalk project on Johns Lake Road, or with other maintenance activities on this roadway.



Project Priority	Item	Quantity	Units	Total
1	Crosswalk	189	ft	\$420.00
1	Signal Study		study	\$15,000.00
2	Sidewalk	9,266	ft	\$764,800.00
3	Stripe Sidewalk	2,000	ft	\$3,500.00
3	Sidewalk (Version A)	2,039	ft	\$184,700.00
3	Sidewalk (Version B)	1,152	ft	\$113,600.00

ESTIMATE BASIS AND ASSUMPTIONS:

- Sidewalk estimates based on estimating tool developed for Phase 1, Estimates for all other improvements based on Unit Costs per FDOT Lake County (Area 7) averages (07/2011 - 06/2012).
- Estimate does not include utility relocation costs, utility relocation assumed by others.
- The mobilization costs are based on 15% of the construction cost and estimates include maintenance of traffic costs (15% of construction costs).
- No Regular excavation & embankment to 1 ft depth is assumed
- No R/W Impact
- No specialized landscaping (beyond sodding) is included.
- Sidewalk is assumed to be 5 feet wide, unit given is in linear feet.

Location	Limits	Improvement
Add crossing guard	US 27 and Johns Lake, Citrus Tower Blvd & Johns Lake Rd	Only if busing is being reduced or eliminated, would need exclusive pedestrian phase.
In front of school at bus loop and parking entrance	End of turn lane to drop-off / pick-up to bus loop turn lane	Restripe existing crosshatch to a continuous left turn lane
East side of school	Add pedestrian access	Add an additional pedestrian access on east side of school after sidewalks are added on Johns Lake Road.
School Entrance	Designated area	Add covered, fenced hitch style bicycle parking on a concrete pad near the entrance of the school. Do this in conjunction with widening the sidewalk between the school and the apartment complex.



This website represents an ongoing commitment to increase safe access to schools within the Lake~Sumter Metropolitan Planning Organization Planning Area.

Updates to data, and suggestions for programming and project ideas are welcome from all agencies and the general public.

Mike Woods

Project Manager, Transportation Planner

(352) 315-0170

mwoods@lakesumtermpo.com



Mindy Heath, AICP

Consultant Project Manager

(407) 420-4200

Mindy.heath@hdrinc.com



*Promoting Regional
Transportation Partnerships*