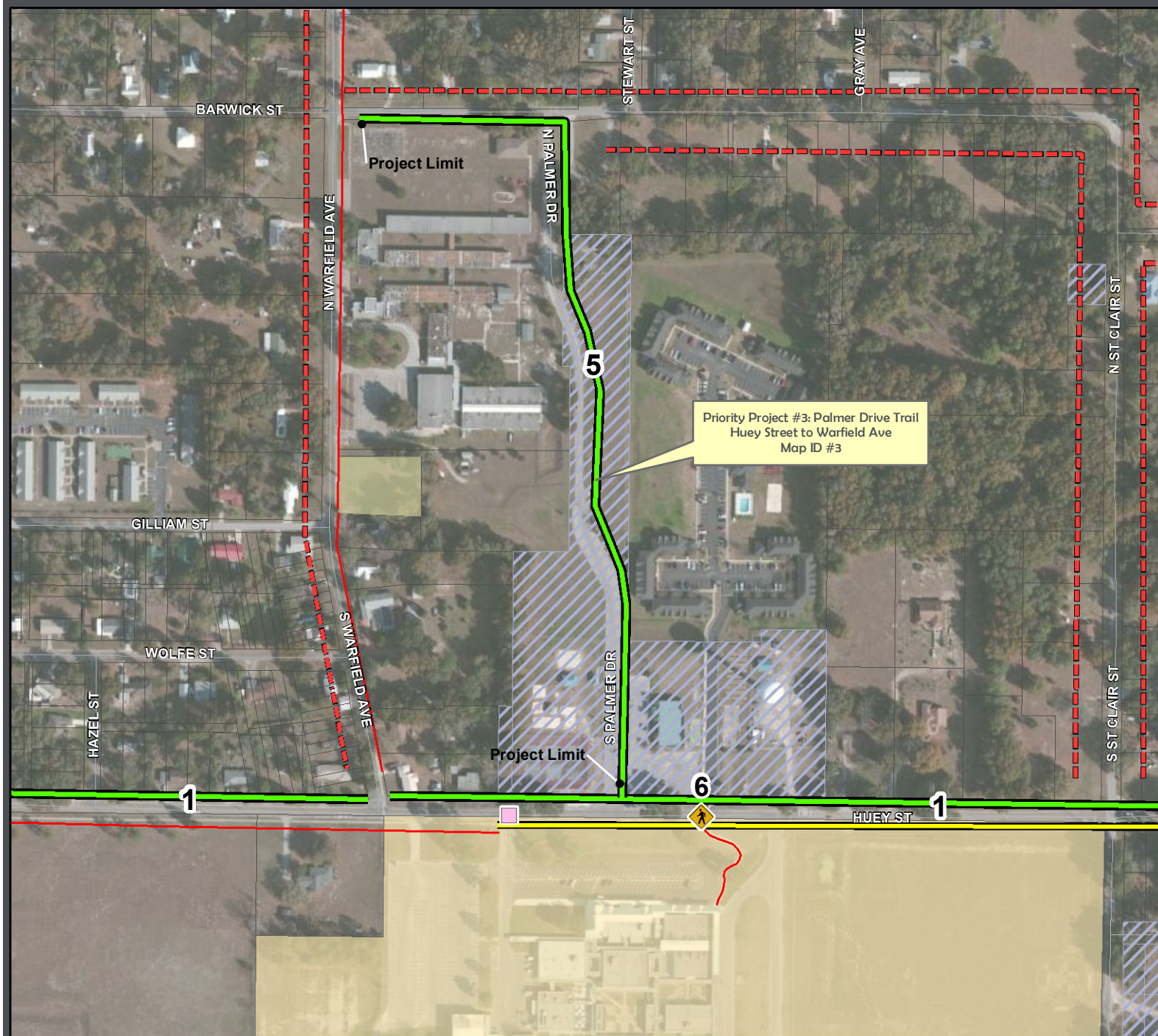


# Priority Project #3: Palmer Drive Trail - ID #5



## LEGEND

- Safe Access Schools Studied
- Existing Sidewalks and Trails**
  - Existing Sidewalks
  - Existing Trails
- SAS Projects Identified**
  - SAS Priority Project #4 (Map ID#6) Intersection/Crosswalk Improvement
  - SAS Priority Projects (By Project ID#) Sidewalk Improvements
  - Priority Project #3 (Map ID #5) Trail Improvements
  - SAS Recommended Projects - Sidewalks
  - SAS Recommended Projects - Trails
- 2008 - December 2011 Bicycle/Pedestrian Involved Crash Locations During School Pickup & Dropoff Times (7:00-8:00 AM & 2:30-3:30 PM)**
  - Bicyclist Involved
  - Pedestrian Involved
- Road System**
  - Major Roads
  - Local Roads
- Other Layers**
  - 2-Mile Buffer of Wildwood Elementary School
  - Parcels
  - School Property - Public
  - Church Owned Property
  - County Owned Property
  - City Owned Property
  - Railroad
  - Traffic Signal

Source: FDOT, LSMPO, Sumter County GIS, and TranSystems

This map is intended for planning purposes only



Map Date: April 2012