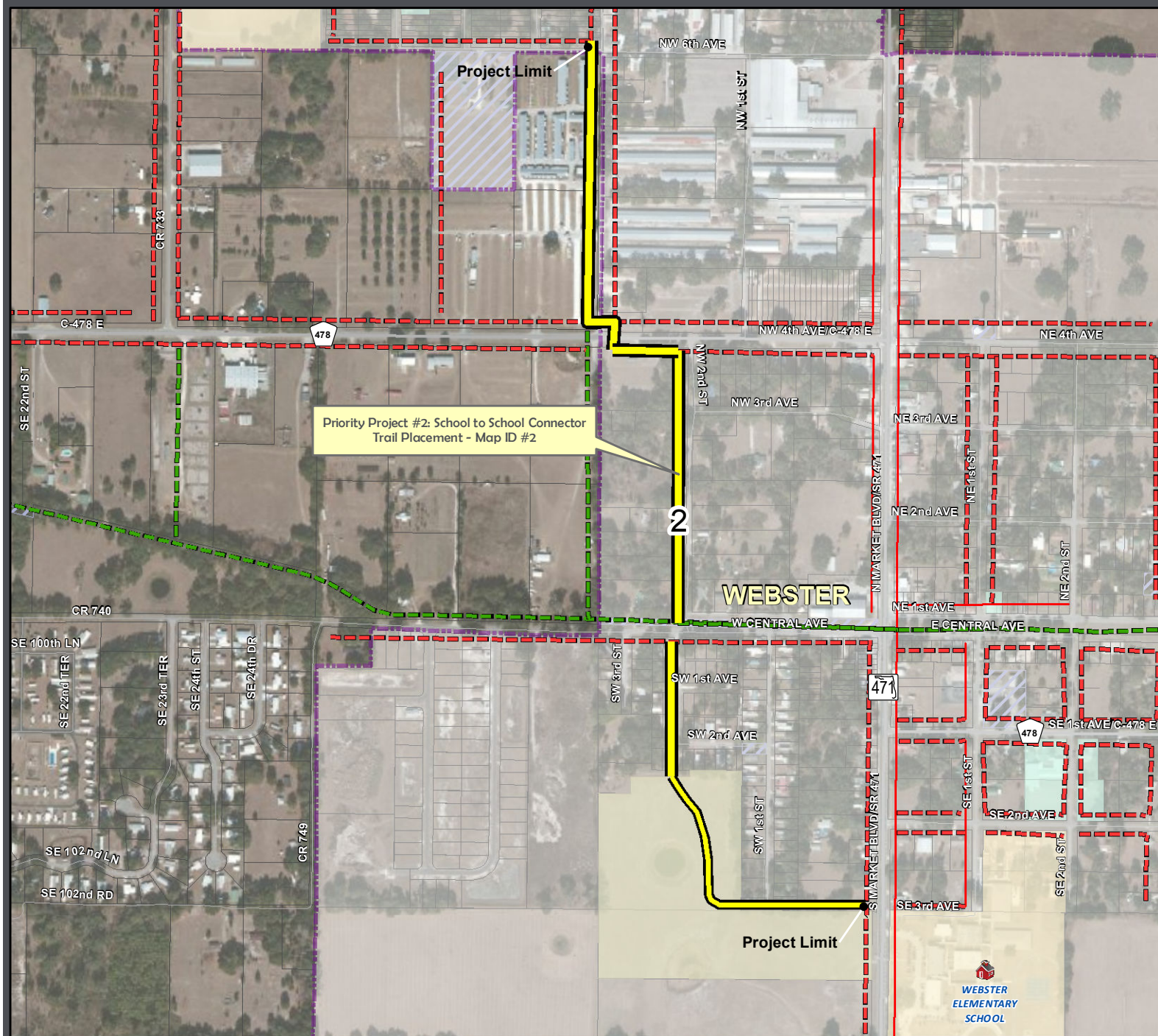


# Priority Project #2: School to School Connector - ID #2



## LEGEND

- Safe Access Schools Studied
- Existing Sidewalks and Trails**
  - Existing Sidewalks
  - Existing Trails
- SAS Projects Identified**
  - ID #2 School to School Connector
  - SAS Recommended Projects - Sidewalks
  - SAS Recommended Projects - Trails
- 2008 - December 2011 Bicycle/Pedestrian Involved Crash Locations During School Pickup & Dropoff Times (7:30-8:00 AM & 4:00-4:30 PM)**
  - Bicyclist Involved (No Occurrence Within Timeframe)
  - Pedestrian Involved (No Occurrence Within Timeframe)
- Road System**
  - Major Roads
  - Local Roads
- Other Layers**
  - 2-Mile Buffer of South Sumter Middle School
  - Parcels
  - School Property - Public
  - Church Owned Property
  - County Owned Property
  - City Owned Property
  - Railroad
  - Traffic Signal

Source: FDOT Sumter County GIS, Hoke Design, Inc, and TransSystems

This map is intended for planning purposes only



Map Date: April 2012