

# Priority Project #2

Add a connection at the eastern (back) of school to Magnolia Blossom Circle.

## Findings:

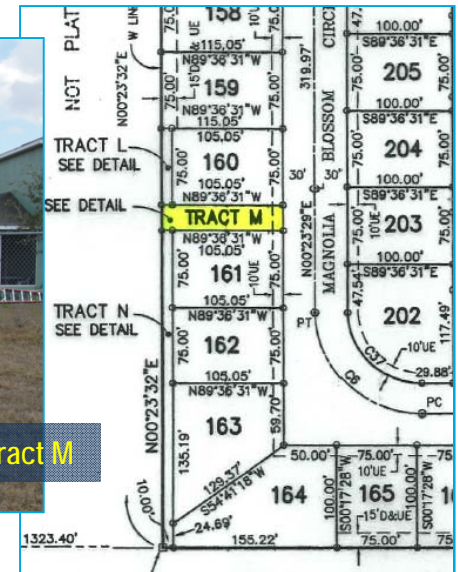
- ✓ At the time it was developed, an area was set aside from Magnolia Blossom Circle to the school site. Students climb the existing fence to access the school. A local parent has facilitated this by having a ladder nearby.

## Recommendation:

- ✓ Coordinate with the County, neighborhood and School Board to pave a connection from the track to the fence (or create an unpaved connection), build a pass-through gate, and then connect to Magnolia Blossom Circle.



Add pass through gate and connect here at Tract M



### NOTES

1. BEARINGS ARE BASED ON AN ASSUMED MERIDIAN WITH THE NORTH LINE OF THE NW 1/4 OF SECTION 3-23-26 BEING S89°36'56"E.
2. WITH REFERENCE TO CURVILINEAR LOTS, RADIAL LINES HAVE BEEN NOTED WITH (R). ALL OTHER LINES ARE NON-RADIAL (NR).
3. CONCRETE MONUMENTS WILL BE SET AT ALL LOT CORNERS PRIOR TO THE EXPIRATION OF THE BOND OR SURETY FOR THIS SUBDIVISION OR PRIOR TO DEEDING OR BUILDING CONSTRUCTION.
4. MORTGAGEE'S JOINDER AND CONSENT TO DEDICATION IS RECORDED BY SEPARATE INSTRUMENT.
5. TRACTS "L", "N" AND "P" ARE DESIGNATED FOR LANDSCAPING, UTILITIES & IRRIGATION AND OTHER USES THAT CAN BE LEGALLY PERMITTED AS DESIGNATED BY THE OWNERS OF TRACTS "L", "N" AND "P", THEIR SUCCESSORS AND ASSIGNS.
6. **TRACT "M", IS DESIGNATED FOR SCHOOL ACCESS, IRRIGATION AND UTILITIES.**
7. TRACT "O" IS DESIGNATED FOR DRAINAGE, STORM WATER RETENTION AND FURTHER USES THAT CAN BE LEGALLY PERMITTED MAY BE DESIGNATED BY THE OWNERS OF TRACT "O", THEIR SUCCESSORS AND ASSIGNS.
8. TRACT "R" IS DEDICATED BY THIS PLAT TO THE CITY OF CLERMONT AS RIGHT OF WAY FOR CW HARRELL ROAD



Connect approximately here