



A SAFE SCHOOLS TRANSPORTATION STUDY

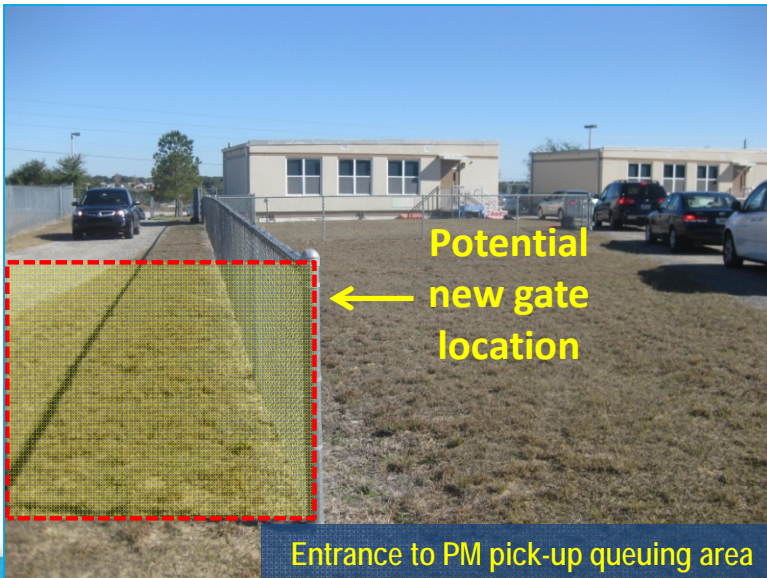
## Pine Ridge Elementary School

# Priority Project #3

## Widen Main School Driveway Entry



Existing school driveway entrance

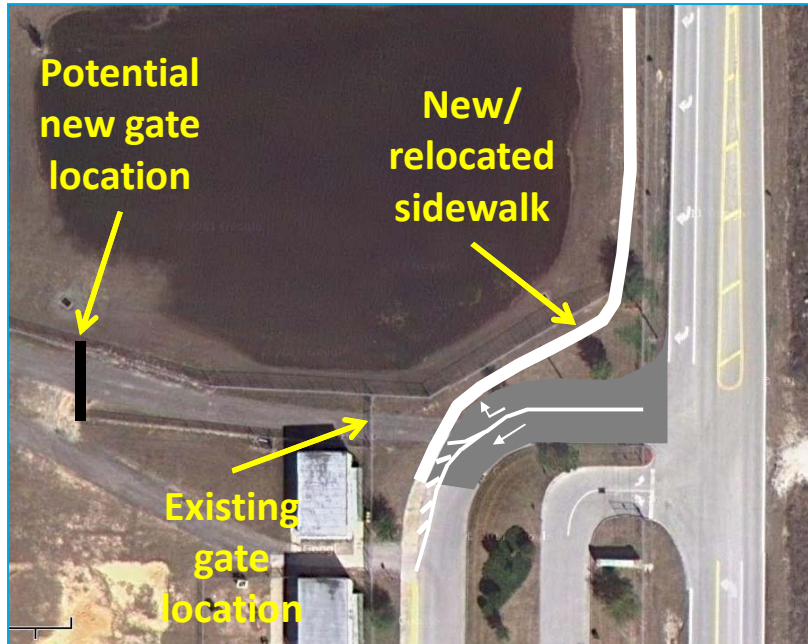


Potential  
new gate  
location

Entrance to PM pick-up queuing area

### Findings:

- ✓ The existing main school driveway entry is one lane wide (13 feet curb to curb)
- ✓ Prior to gate opening for additional pick-up queue storage, vehicles queue in the right turn lane to avoid blocking the driveway, but were observed to queue beyond the available right turn storage; this is a potential safety hazard as this queue extends beyond the 20 mph school zone and the through lane is partially or fully blocked with a posted speed of 55 mph
- ✓ Having two entry lanes would allow stacking to begin on-campus prior to opening of the gate without blocking the school access, and reduce the off-campus queuing
- ✓ Gates regulating access to additional queue space could be moved to end of area with fencing on both sides; total additional queue space would be about 300 feet (approx. 12 vehicles)
- ✓ Additional queue space may negate need to extend southbound right turn lane into school



### Recommendations:

- ✓ Consider widening entry driveway to two lanes & relocating the gate to the additional queuing area
- ✓ Preferred to widen driveway to outside which would require relocating the sidewalk (which would be needed anyway if sidewalk is continued to the north along the retention berm)
- ✓ Continue to request parents not arrive until after the time the gate is opened to pick up students; may consider potential penalties for parents arriving early & queuing on CR 561
- ✓ Alternative improvement:
  - ✓ Lengthen the southbound right turn lane to help prevent queuing into the through lane
  - ✓ Move location of 20 mph school speed zone further north on CR 561 to just south of the CR 565B intersection