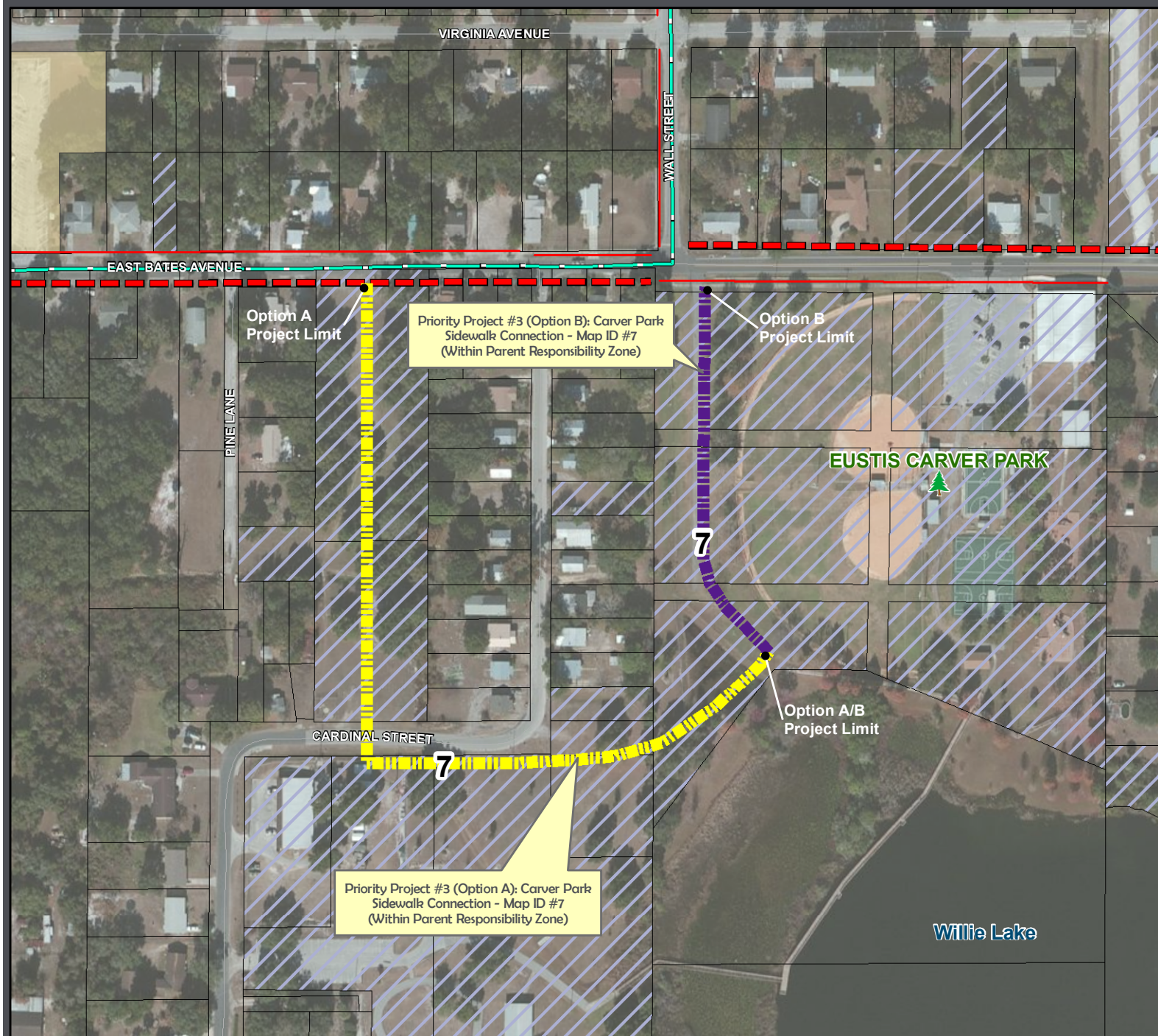


# Priority Project #3: Carver Park Sidewalk Connection - ID #7



## LEGEND

- SAS Schools Studied
- Library
- Crossing Guard Location
- Existing/Planned Projects**
  - Existing Sidewalks
  - Existing Trails
  - Planned Sidewalks (Funded)
  - Planned Trails Projects (Lake County 2008 Trails Master Plan)
- SAS Projects Identified - Eustis Middle School**
  - Carver Park Connection (Option A) Priority Project #3 (Map ID #7)
  - Carver Park Connection (Option B) Priority Project #3 (Map ID #7)
  - SAS Recommended Projects - Sidewalks
- Road System**
  - Major Roads
  - Local Roads
- Other Layers**
  - Parent Responsibility Zone
  - 2-Mile Buffer of Eustis Middle School
  - Parcels
  - School Property - Public
  - Church Owned Property
  - County Owned Property
  - City Owned Property
  - Railroad
  - LakeXpress Bus Route
  - Traffic Signal

Source: FDOT, Lake County Schools, Hole Design, Inc, and TranSystems

This map is intended for planning purposes only



Map Date: December 2011