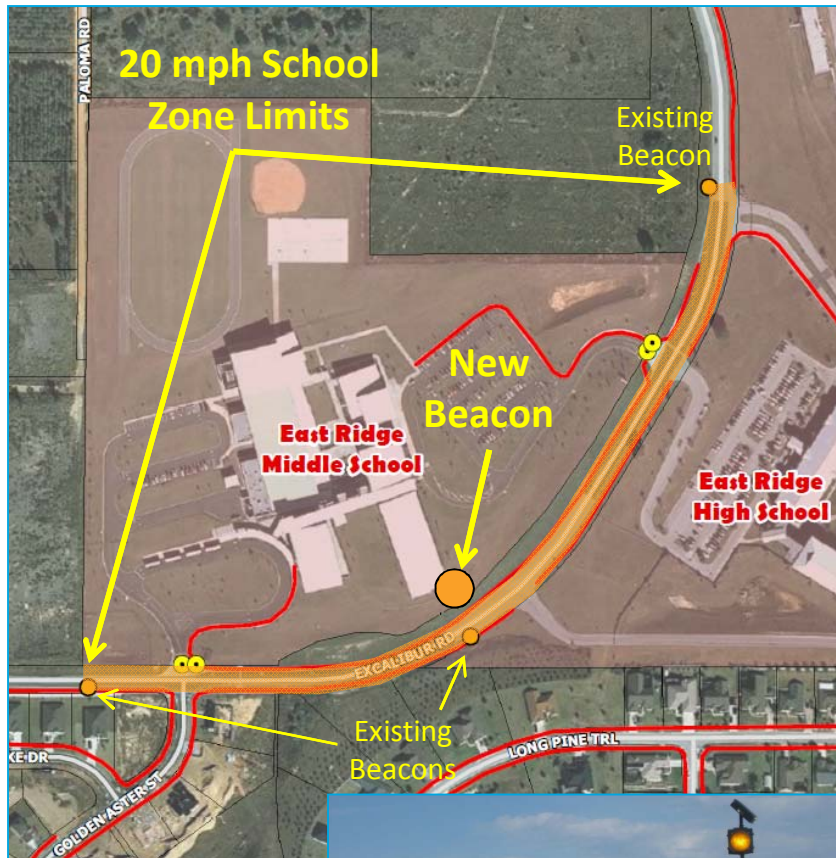


Priority Project #1

School Zone Speed Sign with Flashing Beacon



Existing school zone speed sign with flashing beacon in eastbound direction just west of the school



Findings:

- ✓ 20 mph school zone on Excalibur Rd is nearly one-half mile long due to spacing of ERMS & ERHS driveways
- ✓ Only 1 existing 20 mph school zone sign with flashing beacon in southbound direction (2 in eastbound/northbound direction)
- ✓ Motorists exiting ERHS or from ERMS main driveway and heading south/west are not reminded of 20 mph speed zone; results in inappropriate speeds above 20 mph

Recommendations:

- ✓ Add new school speed zone sign with flashing beacon in southbound direction of Excalibur south of ERHS bus loop driveway
- ✓ Increase enforcement of speed zone on Excalibur Rd; should be simpler since City's annexation