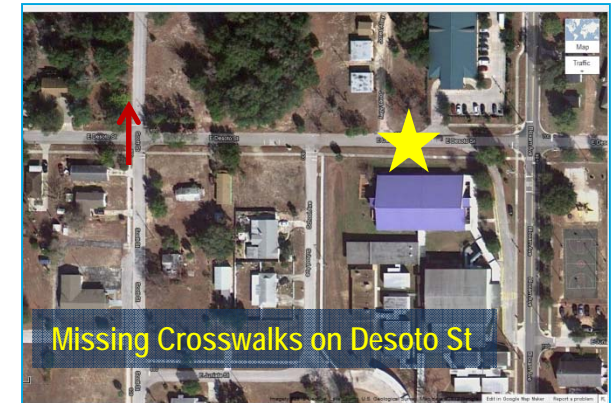
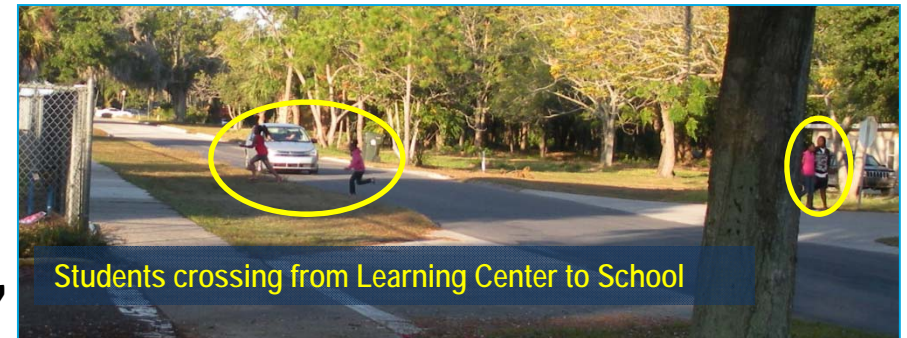


# Priority Project #1

## Desoto Safety Improvements including crosswalks and school zone

### Findings:

- ✓ There is a heavy amount of pedestrian traffic on Desoto St due to the confluence of the north gate pedestrian access, the Learning Center, and the breakfast provided by the Learning Center. Currently many students and parents cross midblock between the Learning Center and the north pedestrian gate
- ✓ Traffic accessing the Pre-K-2<sup>nd</sup> drop-off queues onto Desoto St, creating potential conflicts with pedestrians
- ✓ The Clermont officer who serves as a crossing guard stated that speeding is an issue on Desoto St during school times. Currently there is not a marked school zone on Desoto St, but it is the entrance to the Pre-K-2<sup>nd</sup> drop-off / pick-up and the north pedestrian access
- ✓ There is sidewalk on the south side of Desoto St and the west side of Scott St, but the crosswalks are either missing, or are very faded

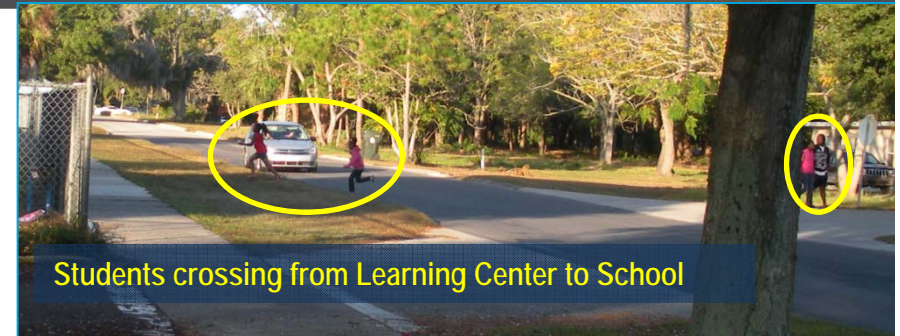


# Priority Project #1

Desoto Safety Improvements  
including crosswalks, school zone and sidewalks

## Findings:

- ✓ There is a heavy amount of pedestrian traffic on Desoto St due to the confluence of the north gate pedestrian access, the Learning Center, and the breakfast provided by the Learning Center



## Recommendations:

- ✓ Establish and sign a school zone on Desoto St from School St to Bloxam Ave
- ✓ Install FDOT ladder style crosswalk and yield sign / striping on Desoto St between the Learning Center and the north pedestrian gate.
- ✓ Install FDOT ladder style crosswalks at appropriate locations on Desoto St at School St, Scott St and Disston Ave
- ✓ Construct sidewalk on the north side of Desoto St from the current Learning Center driveway to School Ave

