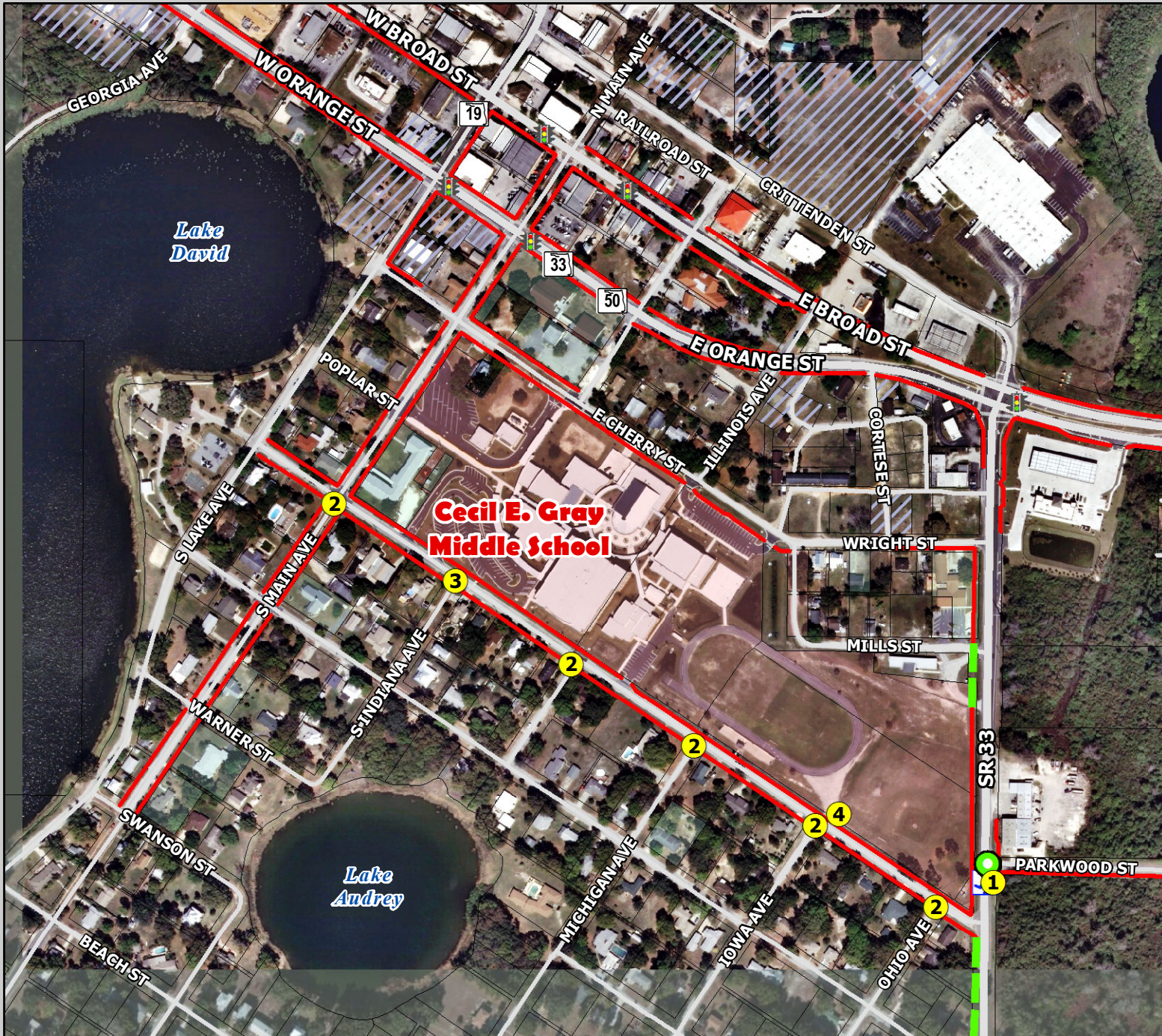


Cecil E. Gray Middle School: Priority Projects



LEGEND

- Schools**
- Public Schools Lake County
- Identified Improvement Projects**
- Priority Projects (by Project ID)
 - Priority Crosswalks Projects
 - Recommended Projects
- Property Ownership**
- Parcels
 - School Property
 - Lake County Owned Property
 - City Owned Property
 - Church Owned Property
 - Golf Owned Property
 - Parks
- Transportation Network**
- Major Roads
 - Local Roads
 - Existing Sidewalks
 - LakeXpress Bus Stop
 - LakeXpress Bus Routes
 - Railroads
 - Traffic Signal
 - Flashing Beacon
 - Crossing Guard Location

Source: FDOT, FDLE, Lake County Schools, LSMPO, HDR

This map is intended for planning purposes only



SafeAccess
A SAFE SCHOOLS TRANSPORTATION STUDY

