

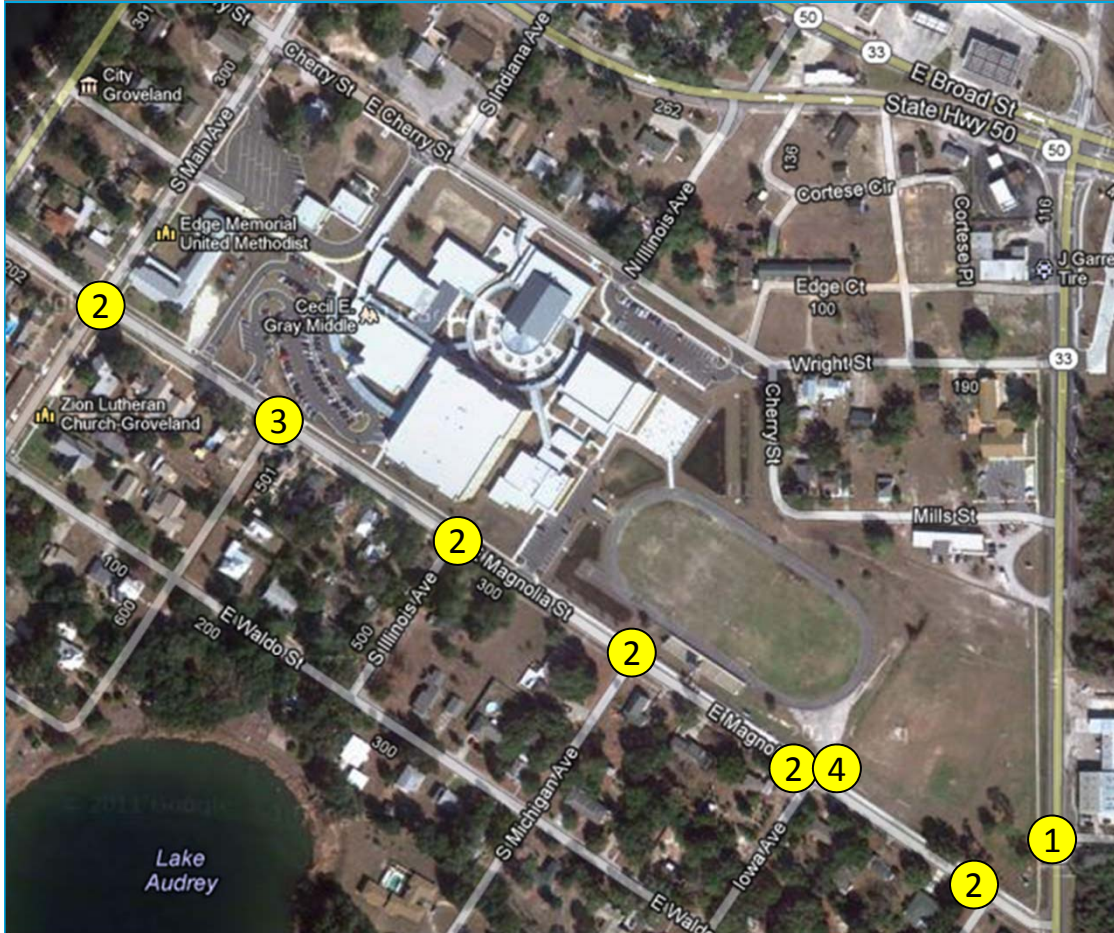


**SafeAccess**

A SAFE SCHOOLS TRANSPORTATION STUDY

## Cecil E. Gray Middle School

# Recommended Priority Projects



### Recommendations:

1. Construct sidewalk connection on SR 33 from Magnolia St to Parkwood St
2. Construct sidewalk connections and ramps along Magnolia cross streets adjacent to school; install crosswalks
3. Relocate existing main entrance crosswalk on Magnolia St with school sidewalk
4. Improve sidewalk at field access driveway