



A SAFE SCHOOLS TRANSPORTATION STUDY

Cecil E. Gray Middle School Groveland, FL

March 2013



Cecil E. Gray Middle School Snapshot

May 8, 2012

Grades: 6th – 8th

Total Students: 987

- Provided Bus Transportation : 752
- Not Provided Bus Transportation: 235
- Buses Assigned to School (20 reg, 4 ESE) 24

Students Living within the “Walk Zone”: 167

- Provided Bus Transportation: 72
- Not Provided Bus Transportation: 95

Observation Day (Sunny)

- Walkers: 75 - 100
- Bike Riders: 4

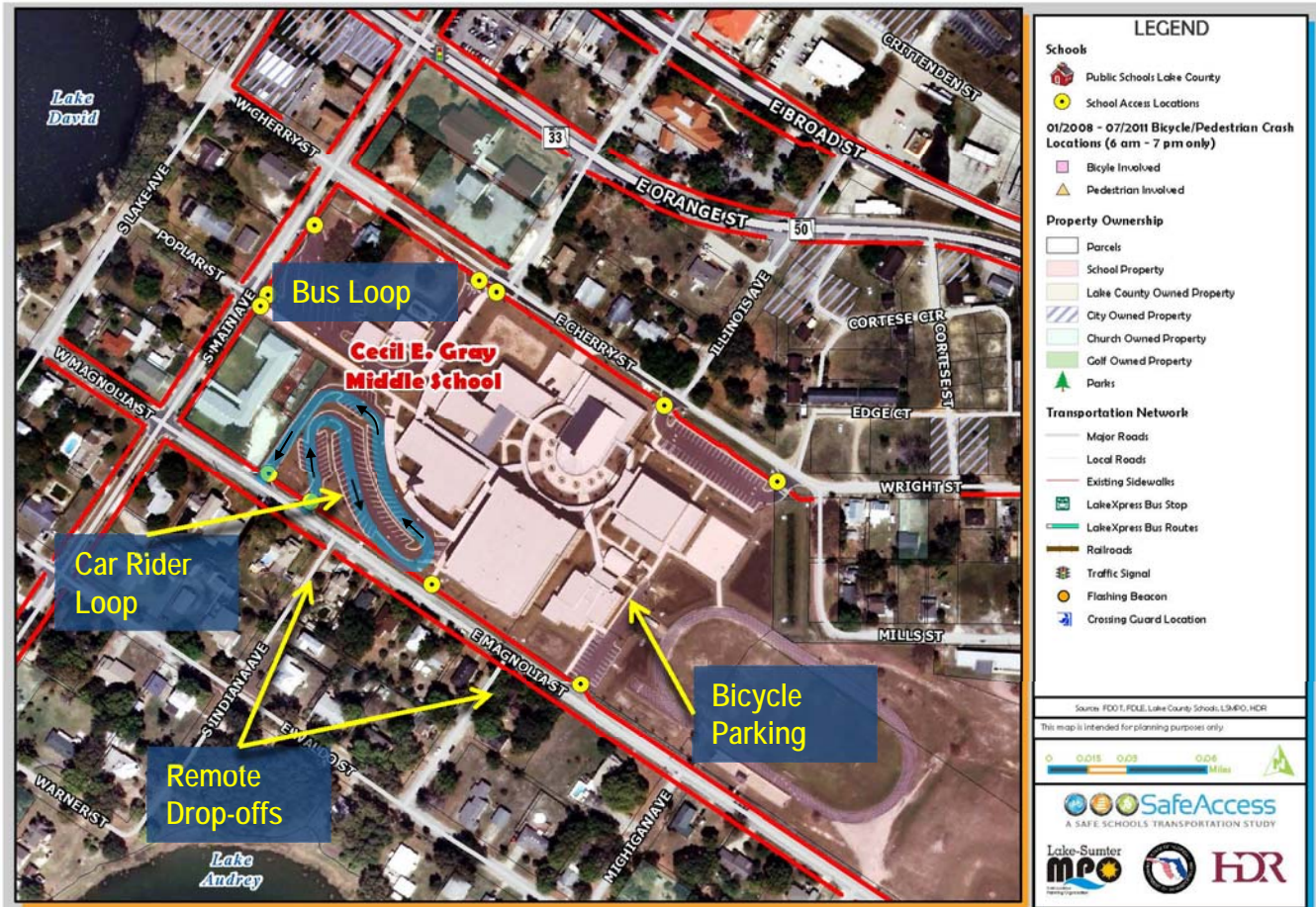


- ✓ Cecil E. Gray Middle School website – Click [here](#)
- ✓ City of Groveland website – Click [here](#)
- ✓ Lake County Schools website – Click [here](#)

Findings:

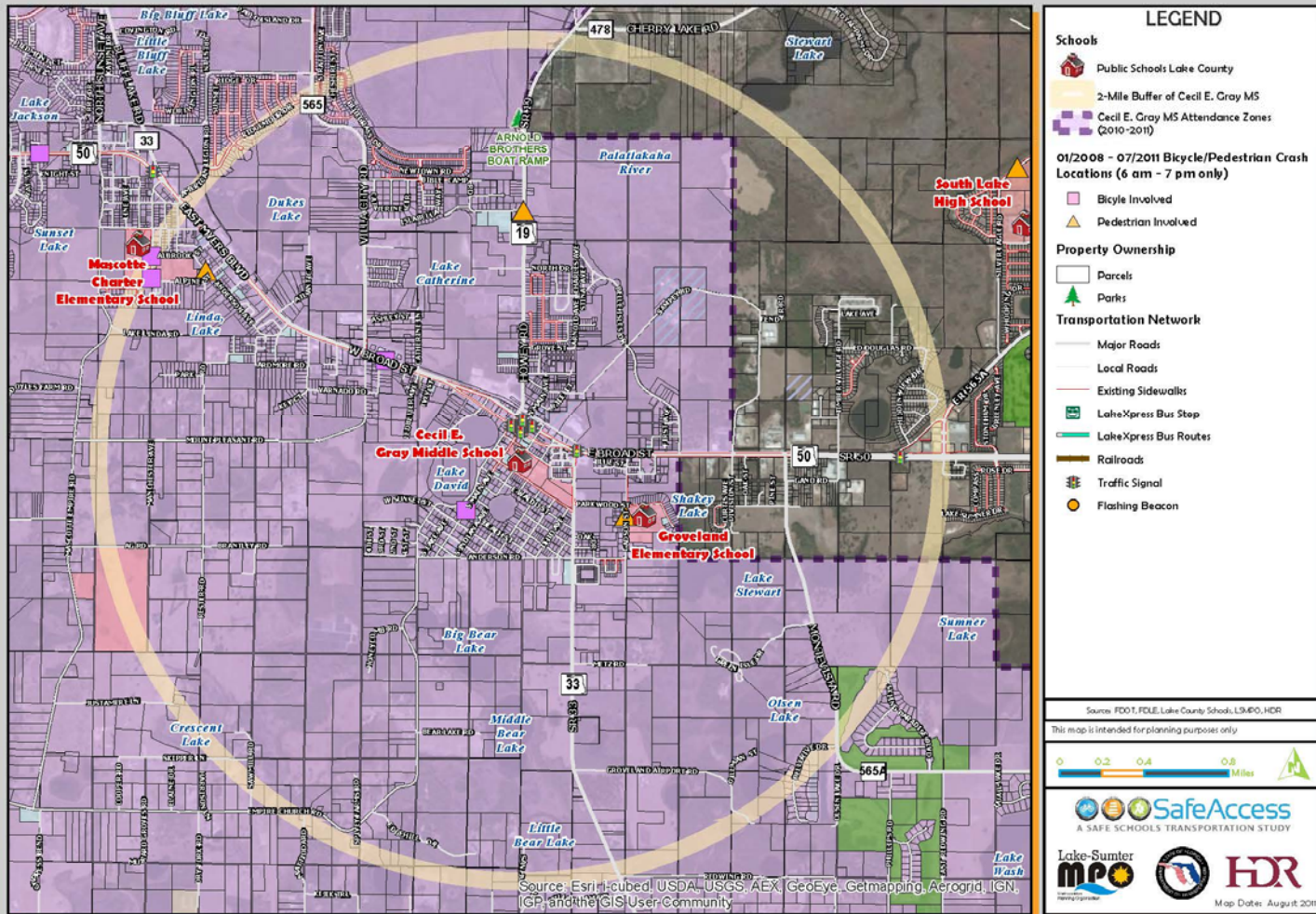
- ✓ Bus loop separated from drop-off/pick-up
- ✓ School was recently renovated; school staff was able to give input on the access design
- ✓ Car loop was very efficient for both drop-off and pick-up
- ✓ Campus gates open at 8:45 AM
- ✓ All pedestrians must access school from Magnolia St
- ✓ No pedestrian access on north side of school

Cecil E. Gray Middle School: Student Access Location Map



Attendance and 2-Mile "Walk" Zone Map

Cecil E. Gray Middle School: Attendance and 2-Mile "Walk" Zone Map

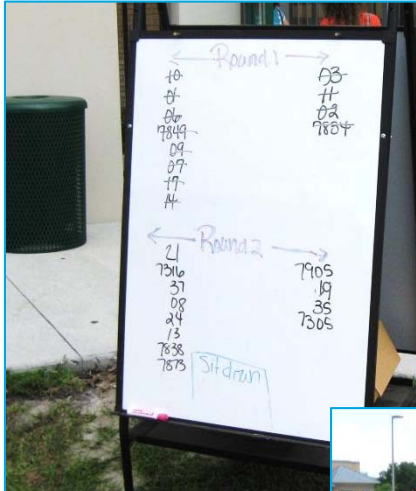


Arrival and Dismissal Schedule

- 8:30 am:** Supervision for student arrival starts
- 8:45 am:** Gates open on campus; bus loop supervision begins
- 9:10 am:** School start time
- 4:00 pm:** School end time; staggered release – group 1 bus riders and car riders, then group 2 bus riders, then walkers



Note: Students are released one hour early on Wednesdays



Dismissal Schedule



Round 1 Bus Staging



Round 2 Bus Staging

Findings:

- ✓ 20 regular service buses and 4 ESE buses (24 total)
- ✓ Bus riders are released in two rounds; Round 2 buses are staged in provided bus parking spaces
- ✓ Sufficient storage for all 24 buses at one time on campus
- ✓ 5 faculty members staff the bus loop
- ✓ Bus operations were observed to be well-run and efficient

Student Drop-off & Pick-up

Findings:

- ✓ Parents are not allowed to exit their vehicle unless parked and coming into the office
- ✓ 1 staff member supervises the car ramp
- ✓ No vehicle conflicts or queue observed on Magnolia St during AM drop-off
- ✓ PM pick-up queue started at 1:12 PM (early release day) and was located mostly on Magnolia St; queue was gone from Magnolia St about 15 minutes after school was dismissed
- ✓ Drop-off / pick-up was very efficient; no conflicts observed; school assisted in the traffic flow design of the campus
- ✓ No formal loading procedure





A SAFE SCHOOLS TRANSPORTATION STUDY

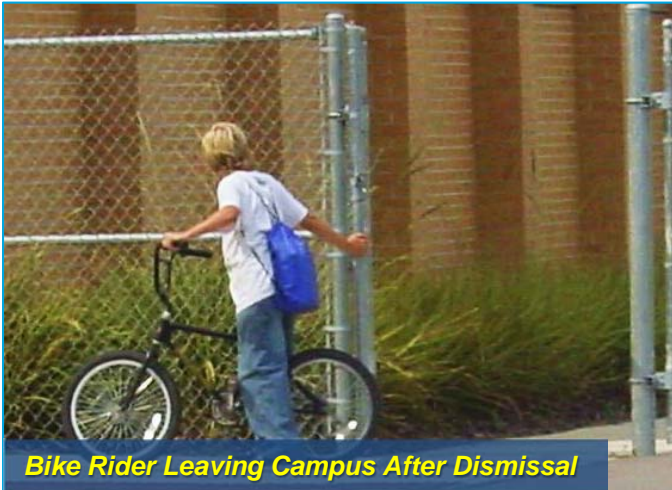
Cecil E. Gray Middle School

Remote Drop-off & Pick-up

Findings:

- ✓ Remote pick-up is nearly non-existent since the school initiated procedures to release walkers last
- ✓ A couple of remote pick-ups were observed on side streets in front of the school





Bike Rider Leaving Campus After Dismissal

Findings:

- ✓ Most walkers observed to come from the neighborhoods immediately south of the school
- ✓ School releases walkers and bike riders last to lessen the chance for vehicle-pedestrian conflicts on Magnolia St and to reduce remote pick-up
- ✓ Last bike rider out of the gate will close the gate behind themselves
- ✓ Crossing guard at Magnolia St and SR 33 (Groveland Police officer) desires existing school zone to be lengthened and speed to be reduced to 20 mph
- ✓ Existing length of school zone falls within FDOT standards



Bike Rack



Students Crossing Magnolia St After School



Findings:

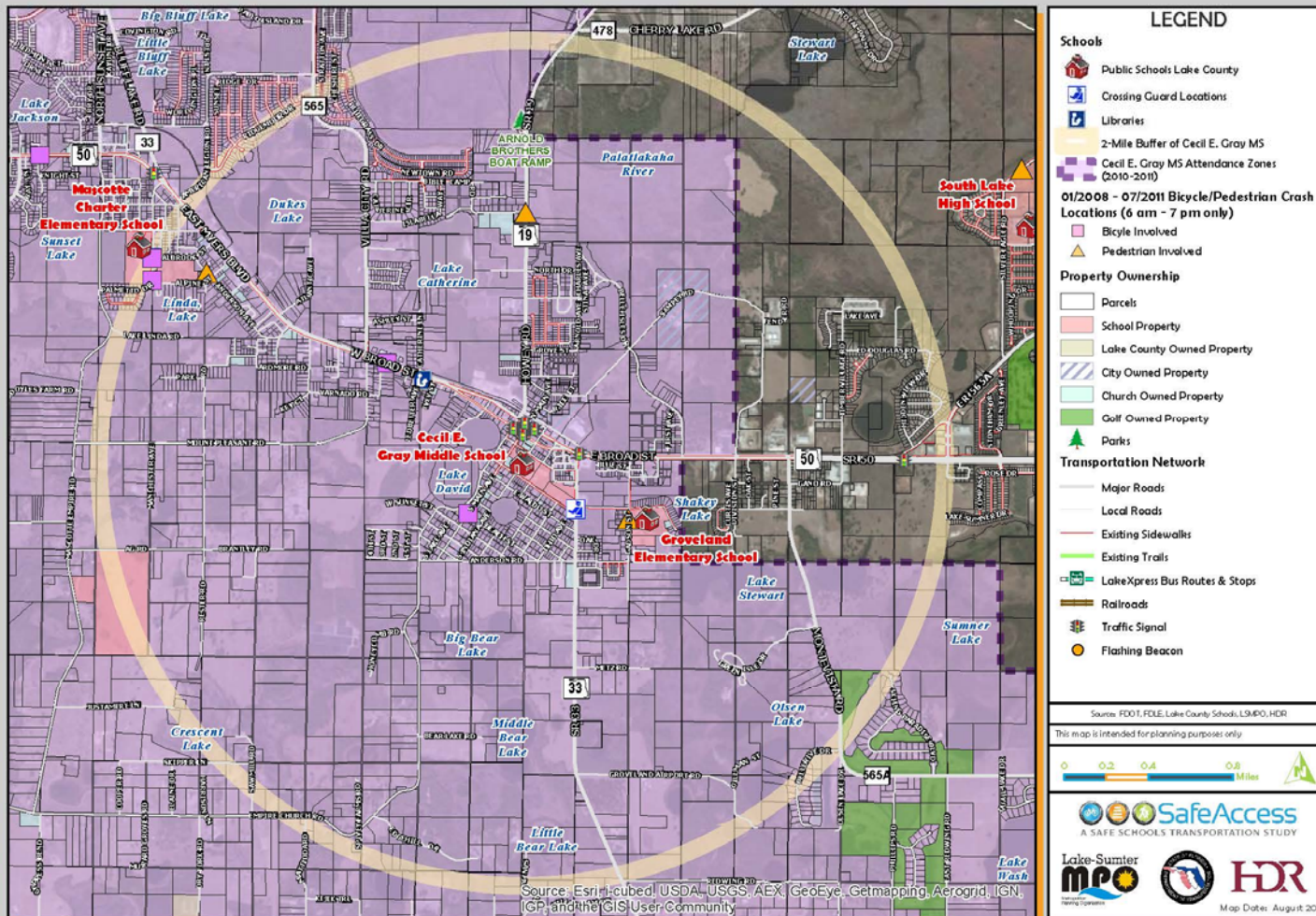
- ✓ No sidewalk connection from midblock crosswalk on SR 33 to existing sidewalk on Parkwood St
- ✓ Sidewalk connections to curbs, curb ramps, and marked crosswalks are missing at cross streets on the south side of Magnolia St between Main Ave and SR 33
- ✓ Crosswalks are missing at Main Ave and Magnolia St
- ✓ Magnolia St sidewalk across school's access driveway is in poor condition



Recommendations:

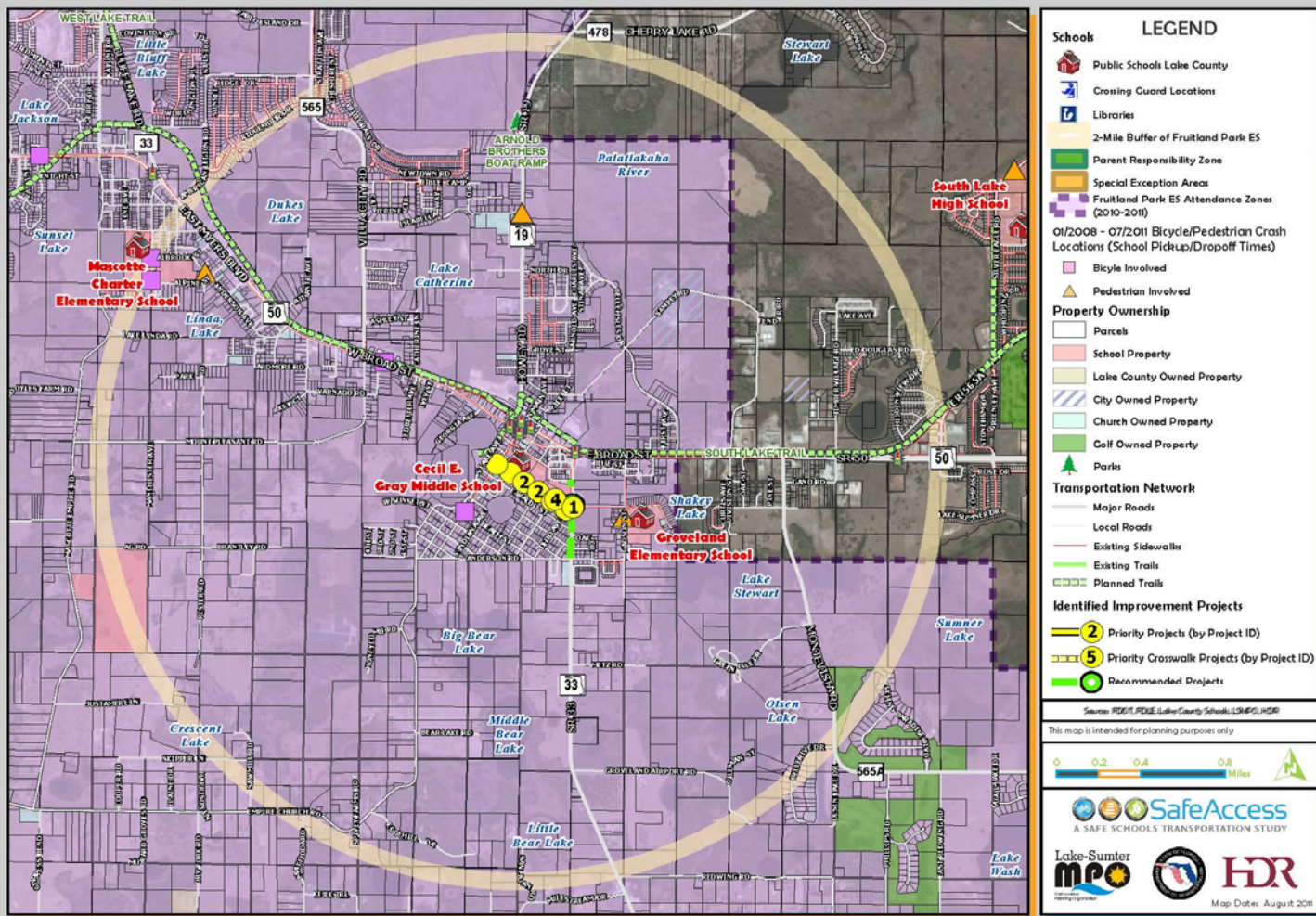
- ✓ Construct sidewalk connection on SR 33 from midblock crosswalk to Parkwood St
- ✓ Improve Magnolia St sidewalk across school's field access driveway
- ✓ Construct sidewalk connections and ramps along Magnolia cross streets between Main Ave and SR 33; install crosswalks
- ✓ Relocate existing Magnolia St midblock crosswalk to align with main sidewalk into/out of school

Cecil E. Gray Middle School: Existing Conditions Map



Transportation Access Master Plan

Cecil E. Gray Middle School: Transportation Access Master Plan



Cecil E. Gray Middle School: Priority Projects



LEGEND

- Schools**
 - Public Schools Lake County
- Identified Improvement Projects**
 - 2 Priority Projects (by Project ID)
 - 5 Priority Crosswalk Projects
 - Recommended Projects
- Property Ownership**
 - Parcels
 - School Property
 - Lake County Owned Property
 - City Owned Property
 - Church Owned Property
 - Golf Owned Property
 - Parks
- Transportation Network**
 - Major Roads
 - Local Roads
 - Existing Sidewalks
 - LakeXpress Bus Stop
 - LakeXpress Bus Routes
 - Railroads
 - Traffic Signal
 - Flashing Beacon
 - Crossing Guard Location

Source: FDOT, FCLE, Lake County Schools, L&M/D, HDR
 This map is intended for planning purposes only.

SafeAccess
A SAFE SCHOOLS TRANSPORTATION STUDY

Lake-Sumter

Recommended Project List

Project Number	Roadway	Location	Project
1*	SR 33	Parkwood St to Existing Midblock Crosswalk	Construct missing sidewalk segment
2	Magnolia St	Main Ave to SR 33	Install crosswalks, ADA ramps, and missing sidewalk connections on all cross streets
3	Magnolia St	At Indiana Ave	Move existing crosswalk to align main sidewalk into / out of school; relocate pedestrian signage; install ADA ramp at new crosswalk
4	Magnolia St	At School's Field Access Driveway	Reconstruct sidewalk

***NOTE: Project 1 is also a priority for Groveland Elementary School**





A SAFE SCHOOLS TRANSPORTATION STUDY

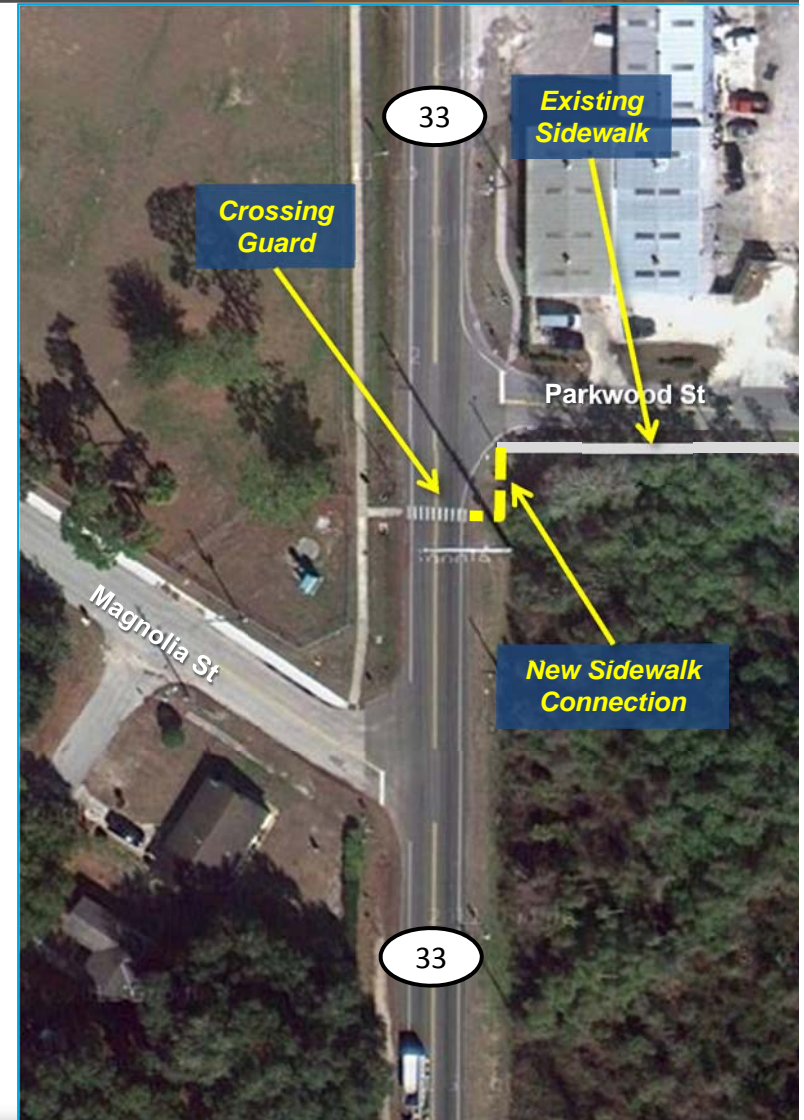
Cecil E. Gray Middle School

Recommended Project #1

SR 33 Sidewalk Connection at Parkwood St

Recommendation:

- ✓ Construct missing sidewalk connection to crosswalk on SR 33 at Parkwood St



Recommended Project #2

Crosswalk Improvements

Findings:

- ✓ Most walkers were observed to come and go from the neighborhood across the street from the school
- ✓ Several cross streets were missing crosswalks, ramps, and sidewalk connections

Recommendations:

- ✓ Install crosswalks on all cross streets along Magnolia St from Main Ave to SR 33
- ✓ Construct ramps with detectable warning maps at all cross streets along Magnolia St from Main Ave to SR 33
- ✓ Construct missing sidewalk segments along Magnolia St from Main Ave to SR 33





A SAFE SCHOOLS TRANSPORTATION STUDY

Cecil E. Gray Middle School

Priority Project #3

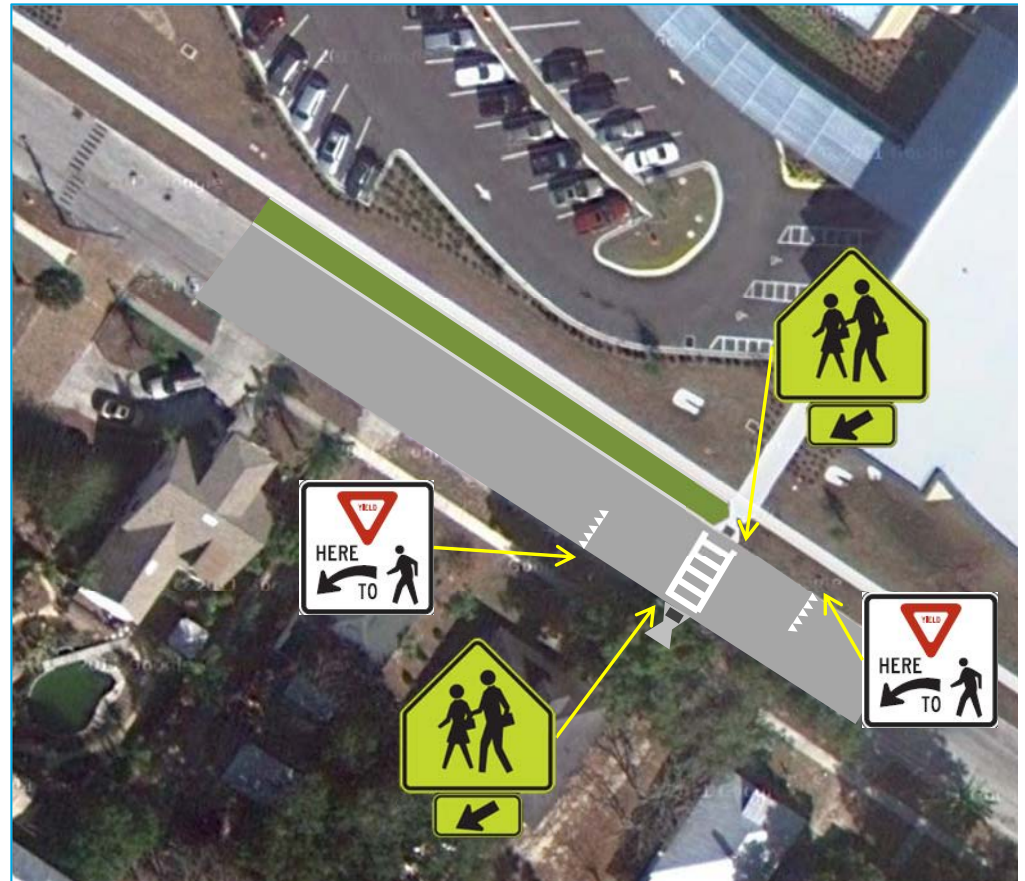
Relocate Existing Main Crosswalk

Findings:

- ✓ The existing crosswalk provided at the main entrance does not line up with the sidewalk used by students at dismissal
- ✓ Existing crosswalk endpoint is a residential driveway

Recommendations:

- ✓ Move existing crosswalk south to line up with sidewalk
- ✓ Install pavement markings and relocate signage to new crossing



Recommended Project #4

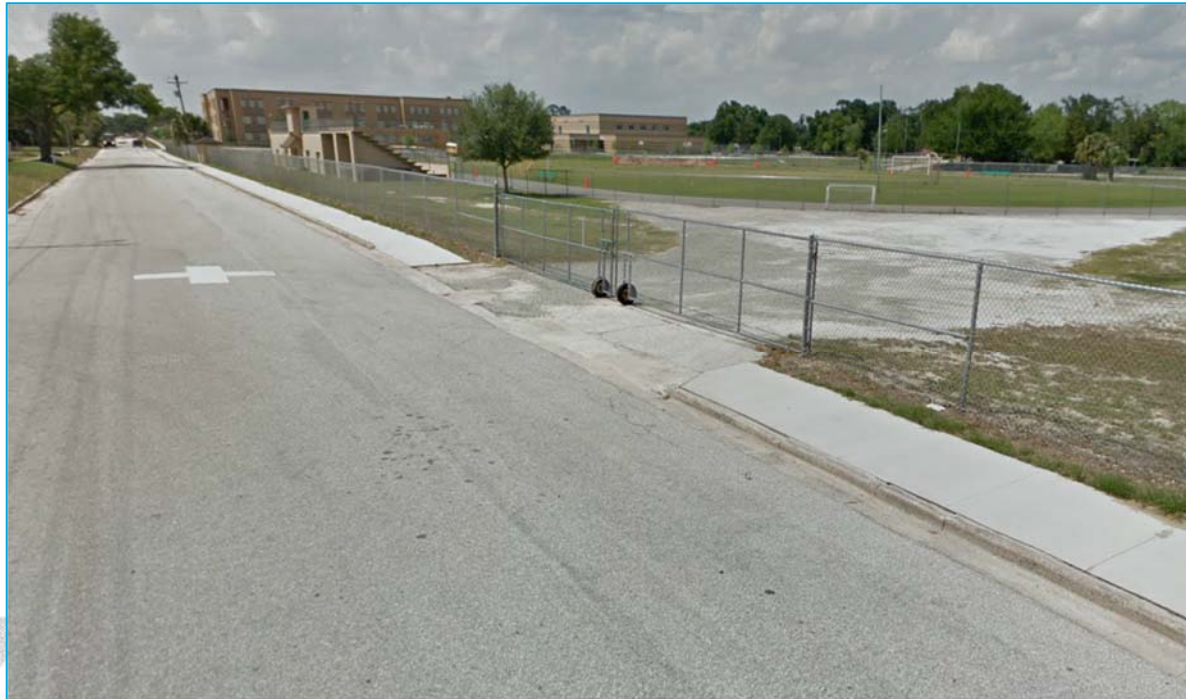
Sidewalk Improvements at Field Access Driveway

Findings:

- ✓ A section of sidewalk was not improved during school remodel
- ✓ Potholes in field access driveway could prove hazardous to pedestrians and cyclists

Recommendation:

- ✓ Reconstruct sidewalk segment and maintain access to field



Priority #	Item	Quantity	Units	Cost Estimate
1	Sidewalk	50	ft	\$24,900.00
2	Crosswalks (9)	214	ft	\$478.00
2	Detectable Pads	10	Pads	\$3,500.00
2	Sidewalk	22	ft	\$49.00
3	Crosswalk	340	ft	\$759.00
3	Detectable Pad	2	Pads	\$700.00
3	Pedestrian Signs	4	Signs	\$1,200.00
4	Sidewalk	453	ft	\$58,500.00
5	Speed Zone Signs	4	Signs	\$2,000.00
7	Close Parking	25	sy	\$16,000.00
7	Parking Lot Signs	2	Signs	\$600.00

ESTIMATE BASIS AND ASSUMPTIONS:

- Sidewalk estimates based on estimating tool developed for Phase 1, Estimates for all other improvements based on Unit Costs per FDOT Lake County (Area 7) averages (07/2011 - 06/2012).
- Estimate does not include design costs, CEI costs, or utility relocation costs, utility relocation assumed by others.
- The mobilization costs are based on 15% of the construction cost and estimates include maintenance of traffic costs (15% of construction costs).
- Regular excavation & embankment to 1 ft depth is assumed
- No R/W costs included
- No specialized landscaping (beyond sodding) is included.
- Sidewalk is assumed to be 5 feet wide, unit given is in linear feet.

Project Number	Roadway	Location	Project
1	Parkwood St	At SR 33	Mark crosswalk on east leg of SR 33/Parkwood St intersection & relocate stop line to behind crosswalk
2	SR 33	Parkwood St	Construct missing sidewalk on SR 33 north of Parkwood St in front of James L. Wyche Senior Center; and
2	SR 33	Magnolia St to Anderson Rd	Construct new sidewalk along west side of SR 33 with crosswalks across Magnolia St at SR 33 and SR 33 at Anderson Rd

NOTE: All of these projects will also benefit Groveland Elementary School



Other Sidewalk / Crosswalk Projects

Other Projects:

1. Mark crosswalk on east leg of SR 33 / Parkwood St intersection
2. Close sidewalk gap and construct new sidewalk on SR 33 from Magnolia St to Anderson Rd





Cecil E. Gray Middle School

Contact Information

This website represents an ongoing commitment to increase safe access to schools within the Lake~Sumter Metropolitan Planning Organization Planning Area.

Updates to data, and suggestions for programming and project ideas are welcome from all agencies and the general public.

Mike Woods

Project Manager, Transportation Planner

(352) 315-0170

mwoods@lakesumtermpo.com



Mindy Heath, AICP

Consultant Project Manager

(407) 420-4200

mindy.heath@hdrinc.com



*Promoting Regional
Transportation Partnerships*