

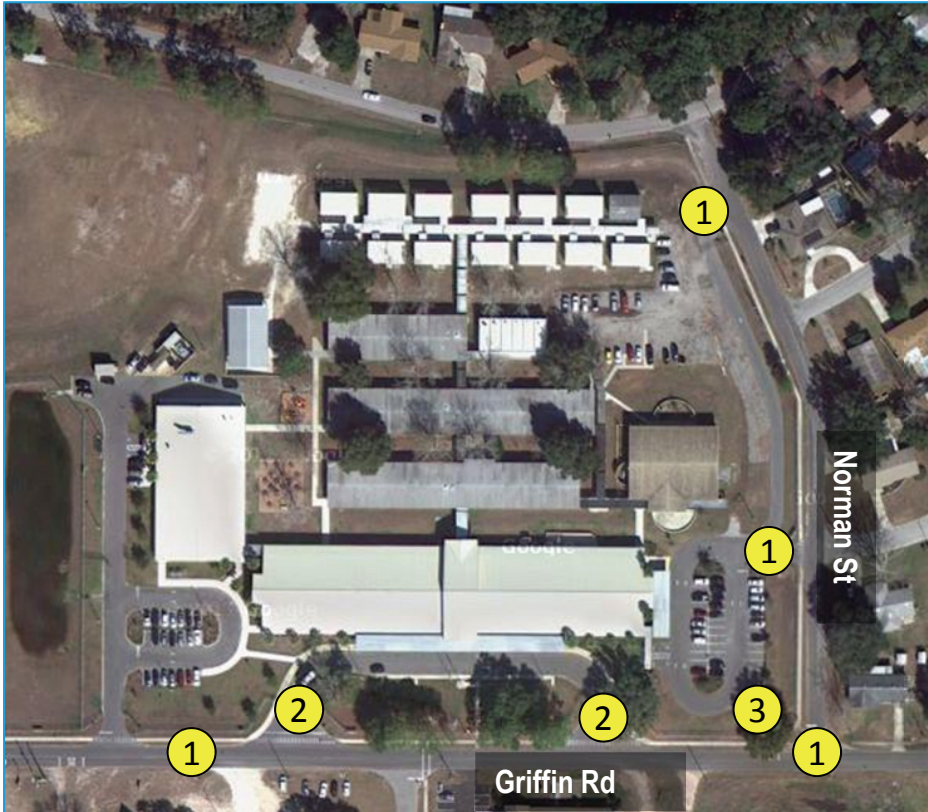


**SafeAccess**

A SAFE SCHOOLS TRANSPORTATION STUDY

**Beverly Shores Elementary School**

# Recommended Priority Projects



## Priority Projects:

1. Install FDOT ladder style crosswalks with detectable warning mats at:
  - ✓ all school driveways
  - ✓ across Griffin Rd to parking areas
  - ✓ at Griffin Rd and Norman St
2. Move existing crossing locations at bus loop to shorten crossing distances
3. Investigate and correct drainage issues at southeast corner and repair sidewalk at this location
4. Designate a 'pedestrian space' or crosswalks across driveways and install sidewalk in the open asphalt area on the north side of Griffin Rd between the school and US 441

