



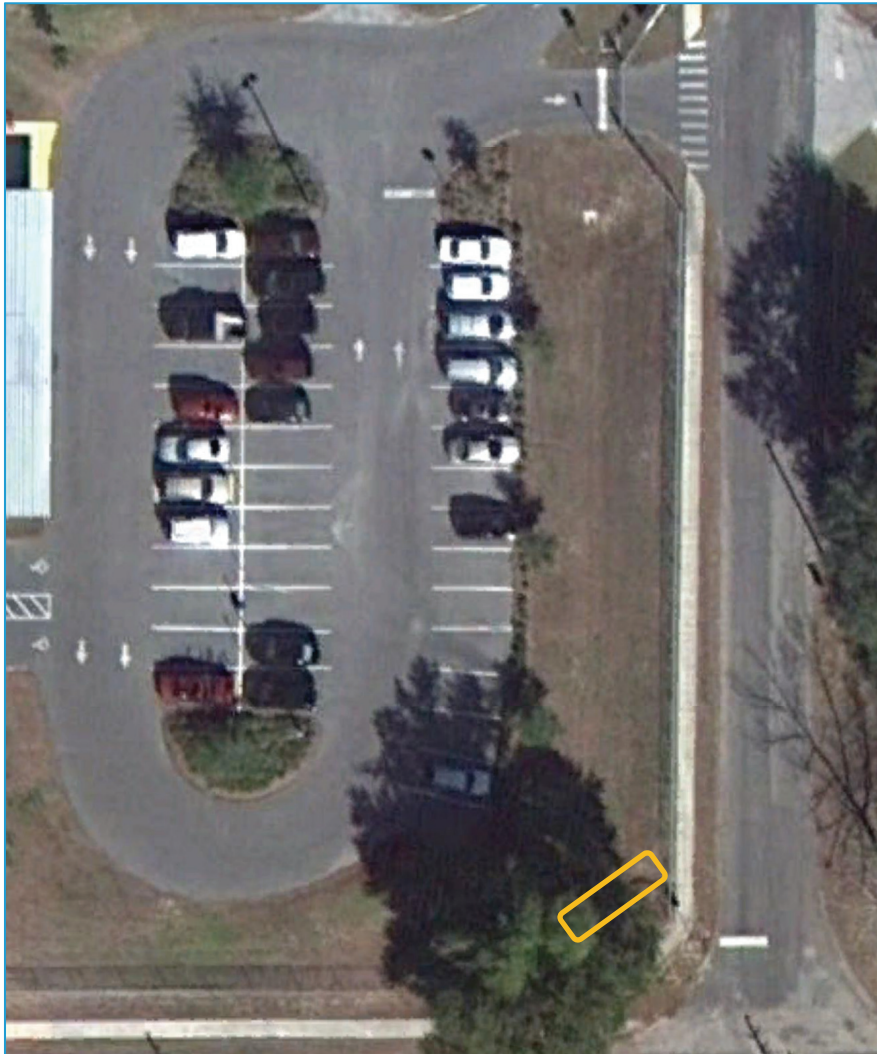
SafeAccess

A SAFE SCHOOLS TRANSPORTATION STUDY

Beverly Shores Elementary School

Priority Project #3

Correct Drainage Issues and Repair Sidewalk at SE Corner



Findings

- ✓ It appears the existing on-site drainage & retention at the school may be inadequate, causing runoff and the observed washout at the sidewalk

Recommendations:

- ✓ Investigate and correct drainage issues at southeast corner and repair sidewalk at this location; likely can be corrected by restoring a proper retention area in southeast corner of school property
- ✓ Repair drainage damage
- ✓ Concrete spillway may be needed if determined erosion will continue