



# SafeAccess

A SAFE SCHOOLS TRANSPORTATION STUDY

# Clermont Middle School Clermont, FL

CLERMONT  
MIDDLE SCHOOL

NO SCHOOL DEC 19-JAN 3, 16, 20  
REPORT CARDS JAN 30  
NO SCHOOL FEB 20  
PROGRESS REPORT FEB 24



August 2012



# Clermont Middle School Snapshot

December 7, 2011

Grades: 6<sup>th</sup> – 8<sup>th</sup>

Total Students: 702

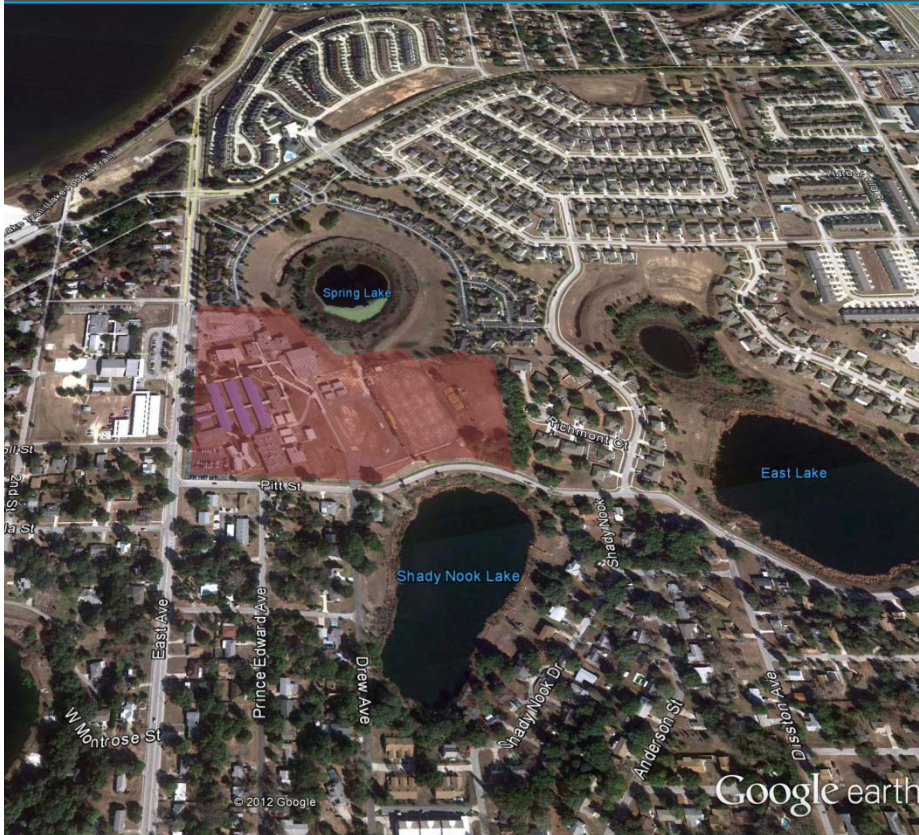
- Provided Bus Transportation : 411
- Not Provided Bus Transportation: 291

Students Living within the “Walk Zone”: 229

- Provided Bus Transportation: 54
- Not Provided Bus Transportation: 175

Observation Day (Partly Cloudy)

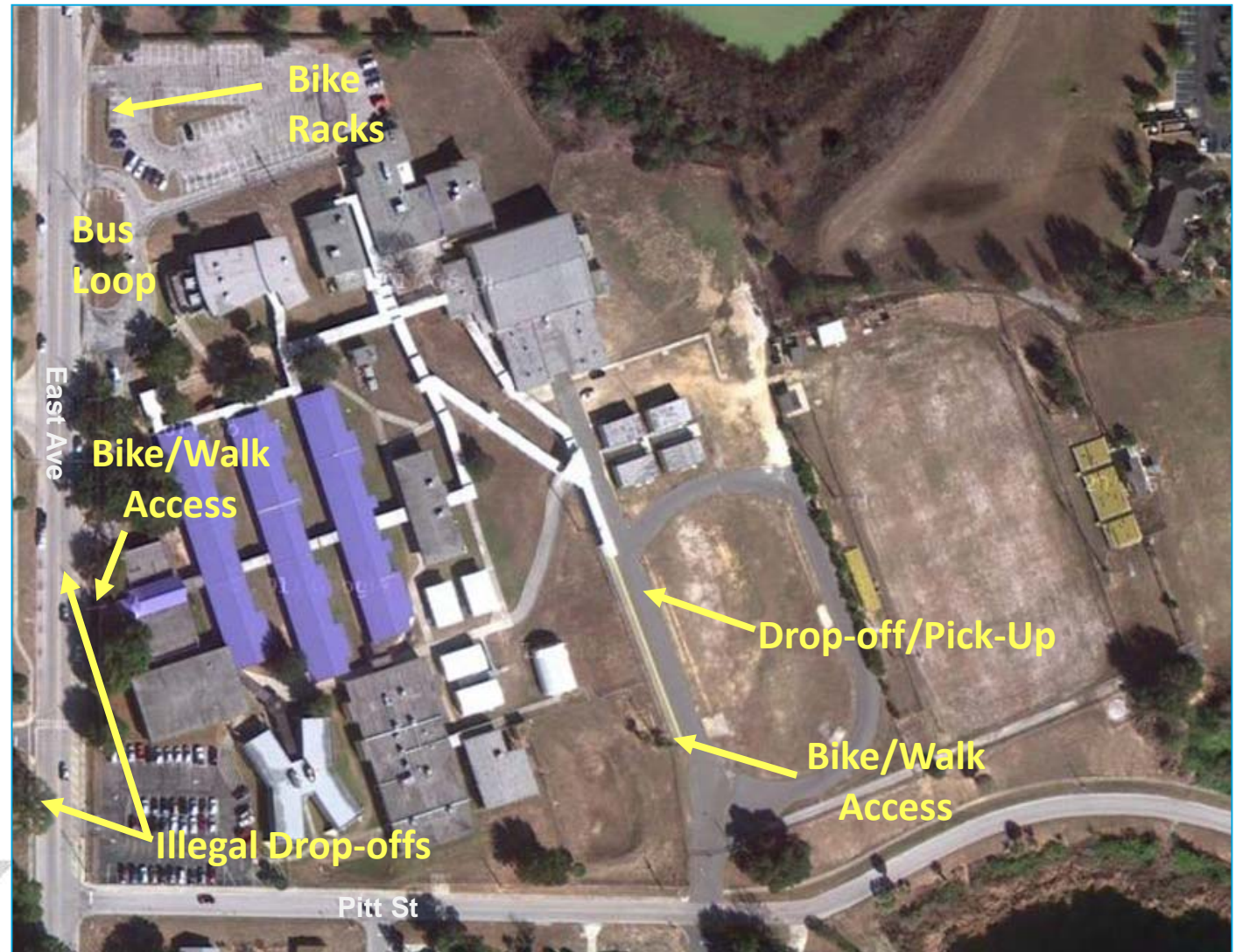
- Walkers: 40
- Bike Riders: 10



- ✓ Clermont Middle School website – Click [here](#)
- ✓ City of Clermont website – Click [here](#)
- ✓ Lake County Schools website – Click [here](#)

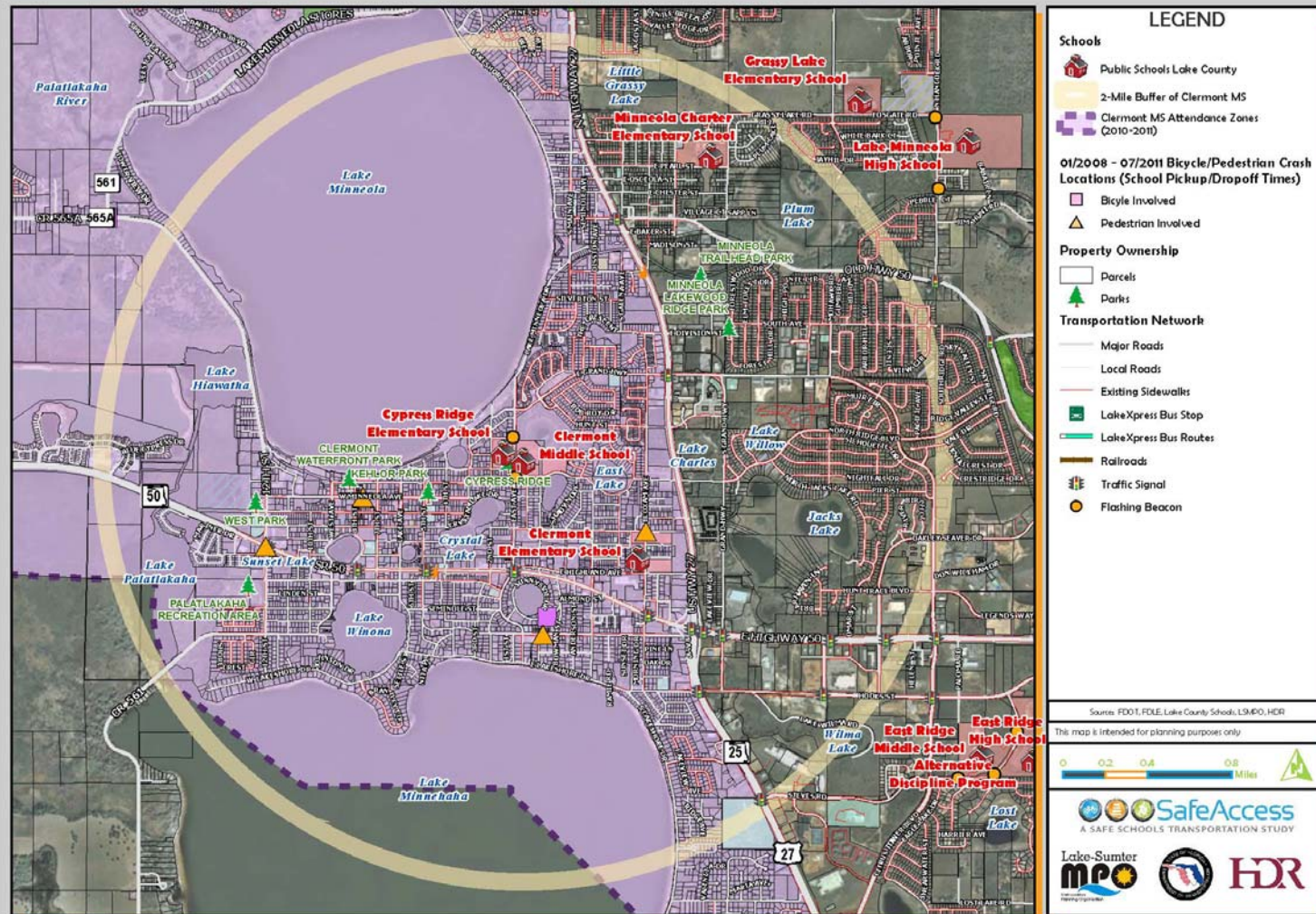
## Findings:

- ✓ Current student enrollment is down from approx. 1,100 prior to opening of East Ridge MS
- ✓ Bus loop separated from drop-off/pick-up
- ✓ Significant drop-off/pick-up on East Ave
- ✓ The City of Clermont would like school traffic to be removed from East Ave



# Attendance and 2-Mile "Walk" Zone Map

## Clermont Middle School: Attendance and 2-Mile "Walk" Zone Map



**8:45-9:15 am:** Arrival – 11 to 13 buses total

**8:45 am:** Student gates open;  
breakfast begins  
(approx. 100 students)

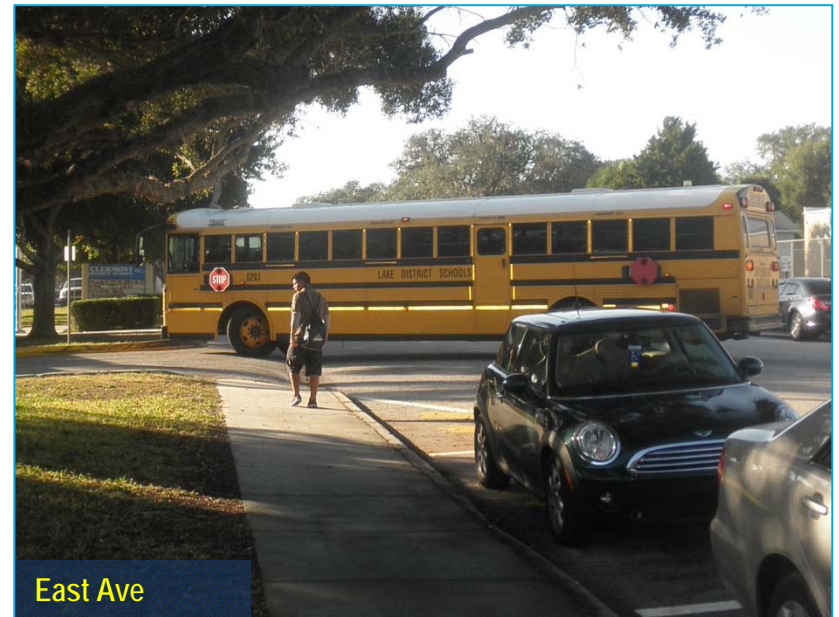
**9:15 am:** School start time

**3:57 pm:** School end time –  
release staggered for  
bus riders; bus numbers  
called to avoid hallway  
congestion

**4:02 pm:** Walkers released

**4:15 pm:** After school programs start

*Note: Students are released one hour early  
on Wednesdays*





## Findings:

- ✓ Bus arrival is staggered in the AM and PM
- ✓ Buses pull up to curb on East Ave if the bus loop is full
- ✓ Buses are stacked using single queue in the PM; bus riders are released from classrooms when bus number is announced to avoid congestion in hallways
- ✓ Some issues with buses exiting on East Ave; sometimes, school staff will help stop traffic to let buses out

# Student Drop-off & Pick-up Pitt Street Entrance

## Findings:

- ✓ Queuing concerns along Pitt St in the PM:
  - ✓ Road is two lanes wide with no turn lanes currently provided
  - ✓ Issue occurs at 2 times: before the gate to the pick-up area is open, and once the pick-up line fills up and queues back onto the street
  - ✓ Occurs in both directions on Pitt St & Drew Ave
  - ✓ Results in blocking of through traffic, which creates conflicts from vehicles weaving around the queued traffic
  - ✓ There are some sight distance issues for vehicles passing queued cars due to the grade and roadway curvature



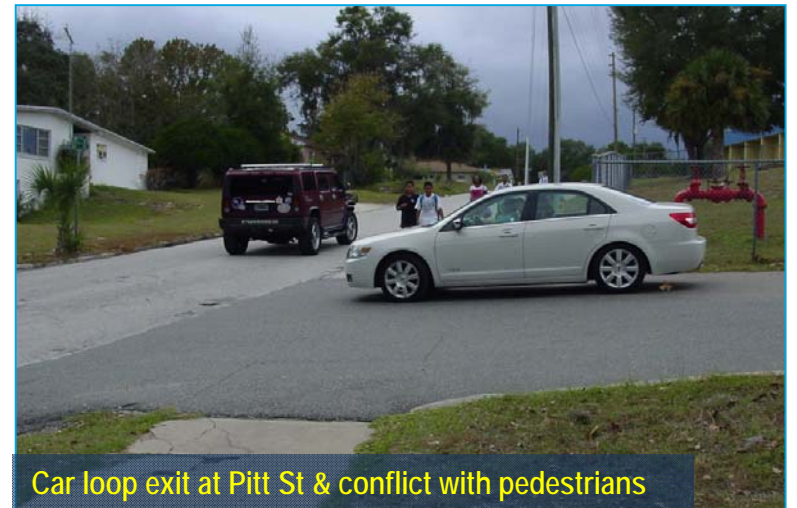
# Student Drop-off & Pick-up Pitt Street Entrance

## Findings:

- ✓ Restriping the car loop to two lanes, narrowing to one lane prior to the start of the pick-up area, will help reduce the off-site queuing & improve safety along Pitt Street; the entire observed queue of vehicles on Pitt St could be accommodated on-site with double stacking
  - ✓ Concept was previously considered by the school, but not used due to staffing requirements
  - ✓ Implement striping & signing design that is intuitive & self-regulating so additional staff are not needed
  - ✓ Existing staff would need to supervise students to direct them not to run out into parked cars where double stacking occurs
- ✓ There is no intersection control for exiting traffic at the drop-off driveway, and no marked crosswalk
- ✓ Exiting drivers turning right may not look to their right for crossing students (see photo), leading to conflicts; may need supplemental signage as a reminder to drivers



Car loop queue on-site at school



Car loop exit at Pitt St & conflict with pedestrians



# Student Drop-off & Pick-up East Avenue

## Findings:

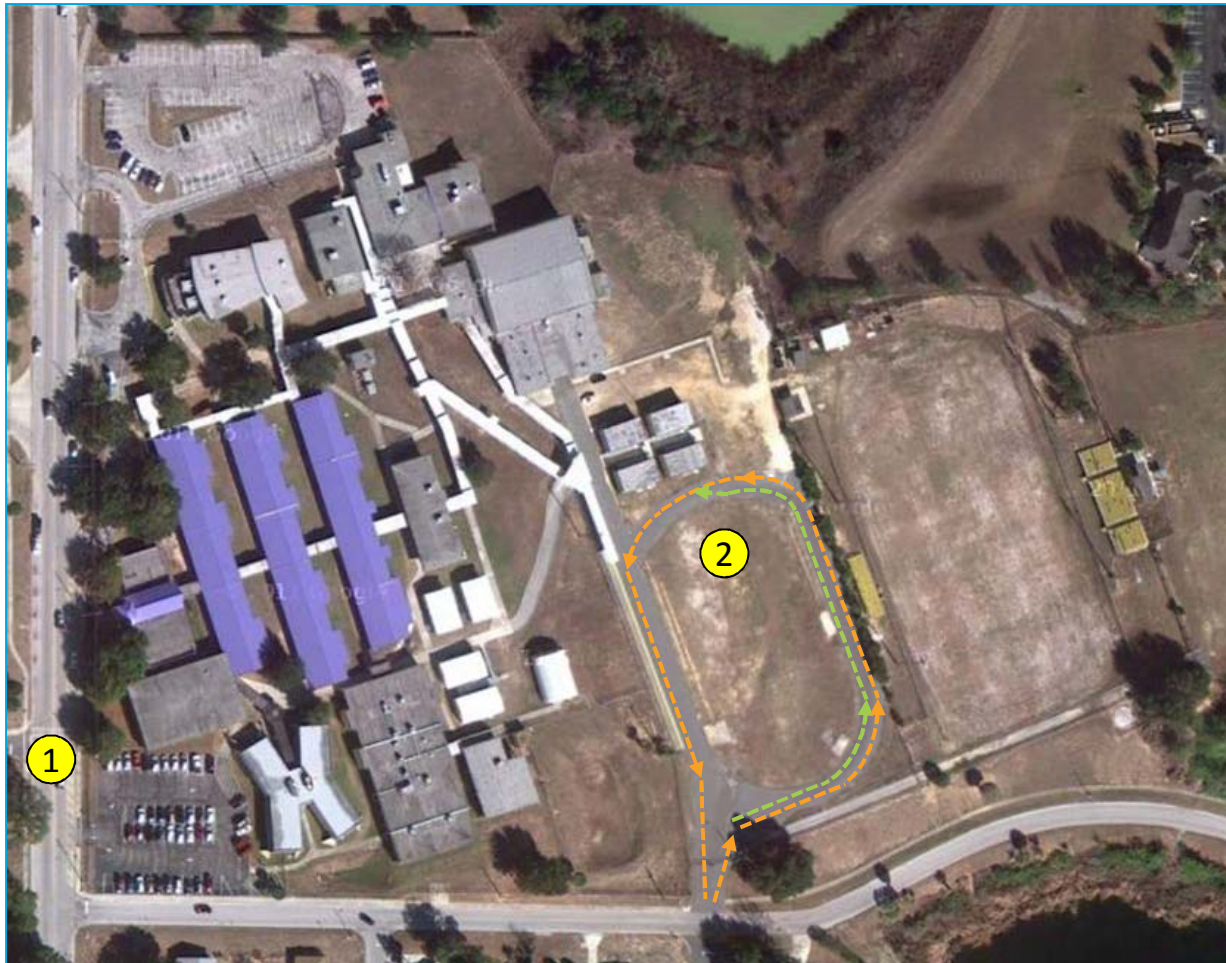
- ✓ The City of Clermont desires that school traffic not use East Ave for drop-off / pick-up. The school discourages / restricts drop-off / pick-up along East Ave
- ✓ Pick-up / drop-off was observed along both sides of East Ave in the AM and PM. Students dropped off or picked up on East Ave were observed to cross the street where the vehicle stopped, rather than use a crosswalk
- ✓ Many students crossed between stopped cars along the roadway
- ✓ 1 (one) parent pulled over on Carroll St to pick-up



# Student Drop-off and Pick-up Recommendations

## Recommendations:

1. Enhance East Ave crosswalk
2. Stripe parent drop-off / pick-up loop from Pitt St for 2 lanes, narrowing to 1 prior to pick-up area

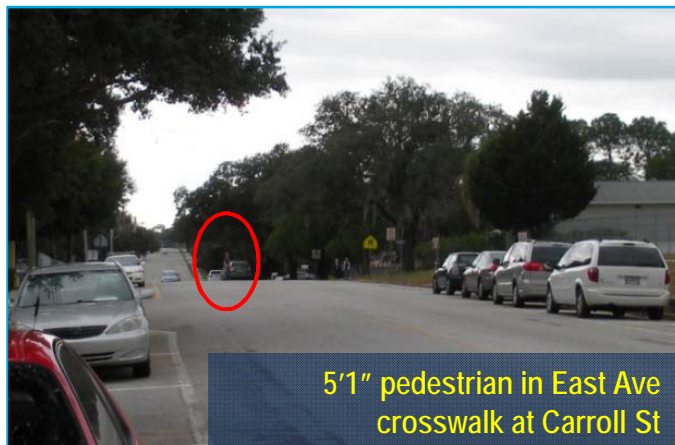


*Drop-off and Pick-up Circulation Concept*





East Ave crosswalk at Carroll St



5'1" pedestrian in East Ave crosswalk at Carroll St

## Findings:

- ✓ Walkers are allowed to access school at front gate or from car drop-off area (AM)
- ✓ Walkers are released at 4:02 PM and must exit the school using the front gate; approximately 40 walkers observed
- ✓ Difficult to see students in the crosswalk on East Ave - the crosswalk paint is somewhat faded in this location, also the rolling nature of the road makes the crosswalk (and pedestrians) harder to see
- ✓ Most students crossing from the school used the crosswalk, some reported that cars did not yield
- ✓ Most students waited to make sure cars were yielding
- ✓ 3 students were observed NOT using the crosswalk (PM)
- ✓ 1 bus was observed NOT yielding to a student waiting to cross in the crosswalk
- ✓ 1 student observed walking in road on East Ave

## Findings:

- ✓ The East Ave crosswalk at Carroll St does not have a curb ramp on the school side; and the crosswalk does not align well with the ramp on the Carroll St side; crosswalk is not very visible from the road; crosswalk on west leg across Carroll St uses transverse lines only
- ✓ Several of the existing curbs at school driveways are not ADA compliant or have maintenance issues and create trip hazards



East Ave crosswalk at Carroll St



East Ave crosswalk at Carroll St



Carroll St crosswalk at East Ave



East Ave at North School Parking Lot



East Ave at Bus Loop Driveway



Prince Edward Ave at  
Pitt St

## Findings:

- ✓ The sidewalk on Prince Edward Ave that ends at Pitt St has a curb ramp, but no receiving ramp at the sidewalk on the north side of Pitt St, and no marked crosswalk
- ✓ The existing sidewalk in the drop-off/pick-up area ends prior to Pitt St, and students using this access in the AM have to walk in the street



Sidewalk adjacent to Car Loop



Bicyclist on Pitt St

## Findings:

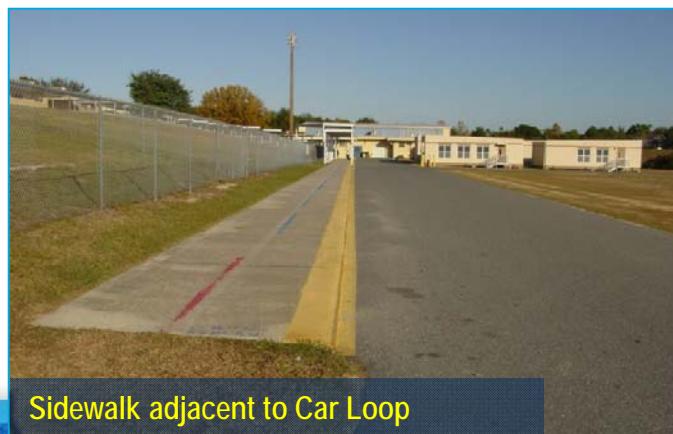
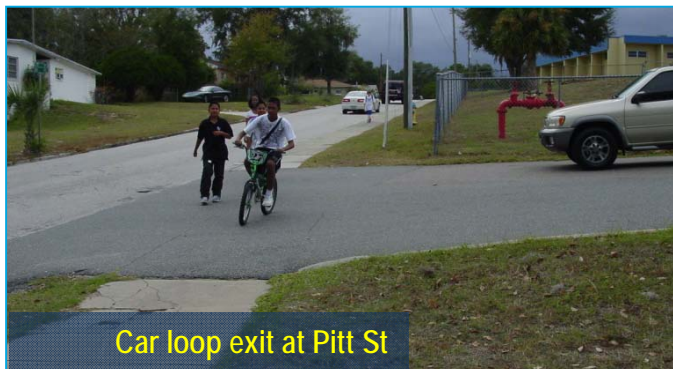
- ✓ No bicycle safety program is offered at this time; school occasionally uses intercom to remind students to use crosswalks
- ✓ Students from the north have a connection to the Lake Minneola Scenic Trail using a wide sidewalk on the east side of East Ave
- ✓ Three bike racks are provided at the faculty parking lot – these are poorly placed from a security perspective (theft is an issue for unlocked bikes), and are the “wheel bender” style
- ✓ School will rent extra lockers for skateboard storage



Bike Racks



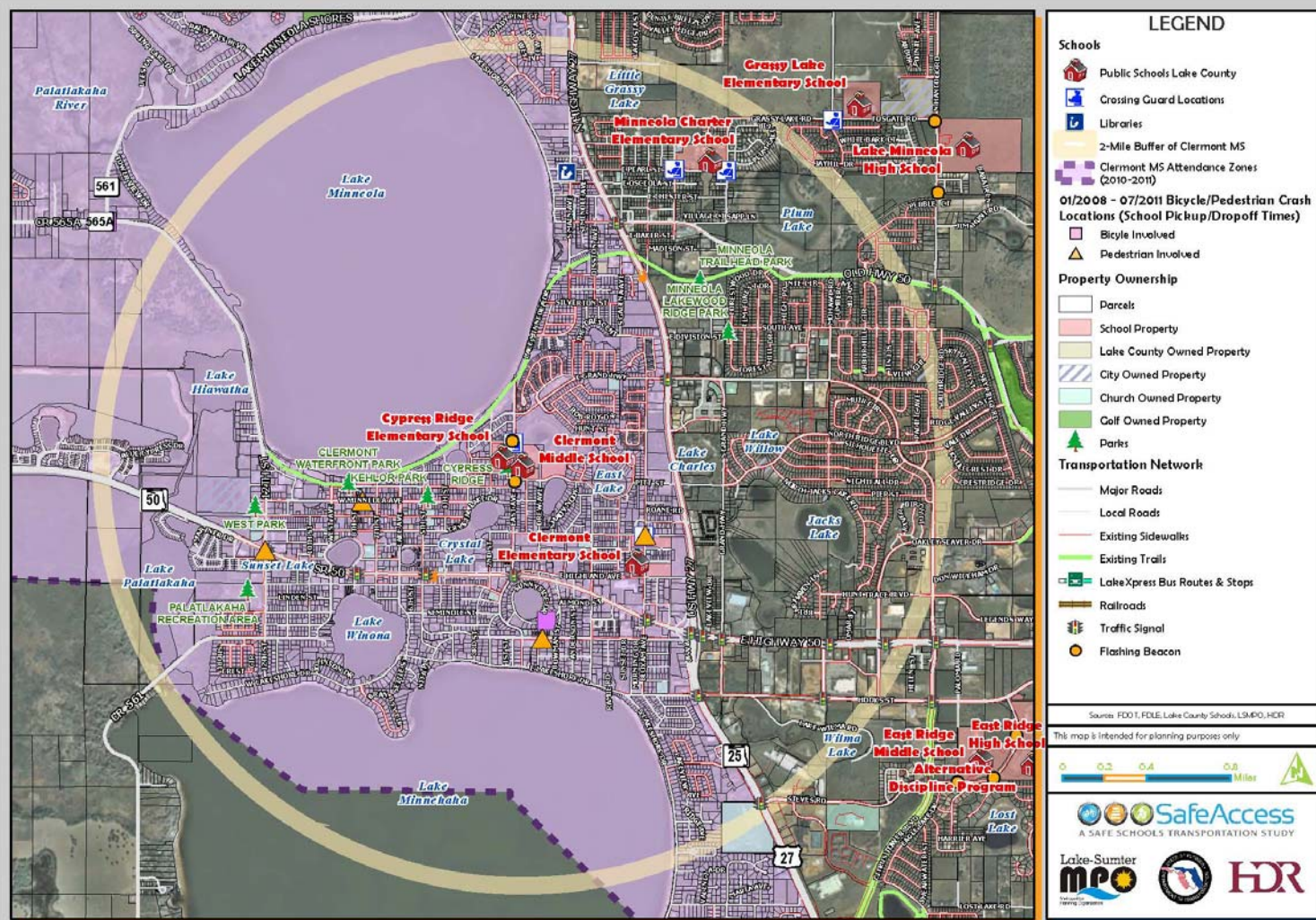
Bike Racks



## Recommendations:

- ✓ Mark crosswalks; some crossings/ramps not smooth & may present tripping hazard
- ✓ Mark crosswalk (relocate crosswalk at Carroll St)
- ✓ Mark crosswalk, add school crossing signage, and construct curb ramp on north side of Pitt St
- ✓ Mark crosswalk; add stop bar and stop sign for traffic exiting school driveway on Pitt St
- ✓ Mark crosswalk, add school crossing signage, and construct curb ramp on north side of Pitt St
- ✓ Connect existing sidewalk on school property to Pitt St sidewalk
- ✓ Sidewalk needs maintenance in some locations along Pitt St (sand covers walkway)
- ✓ Mark crosswalk, add school crossing signage, and construct curb ramp on south side of Desoto St

## Clermont Middle School: Existing Conditions Map





## Findings:

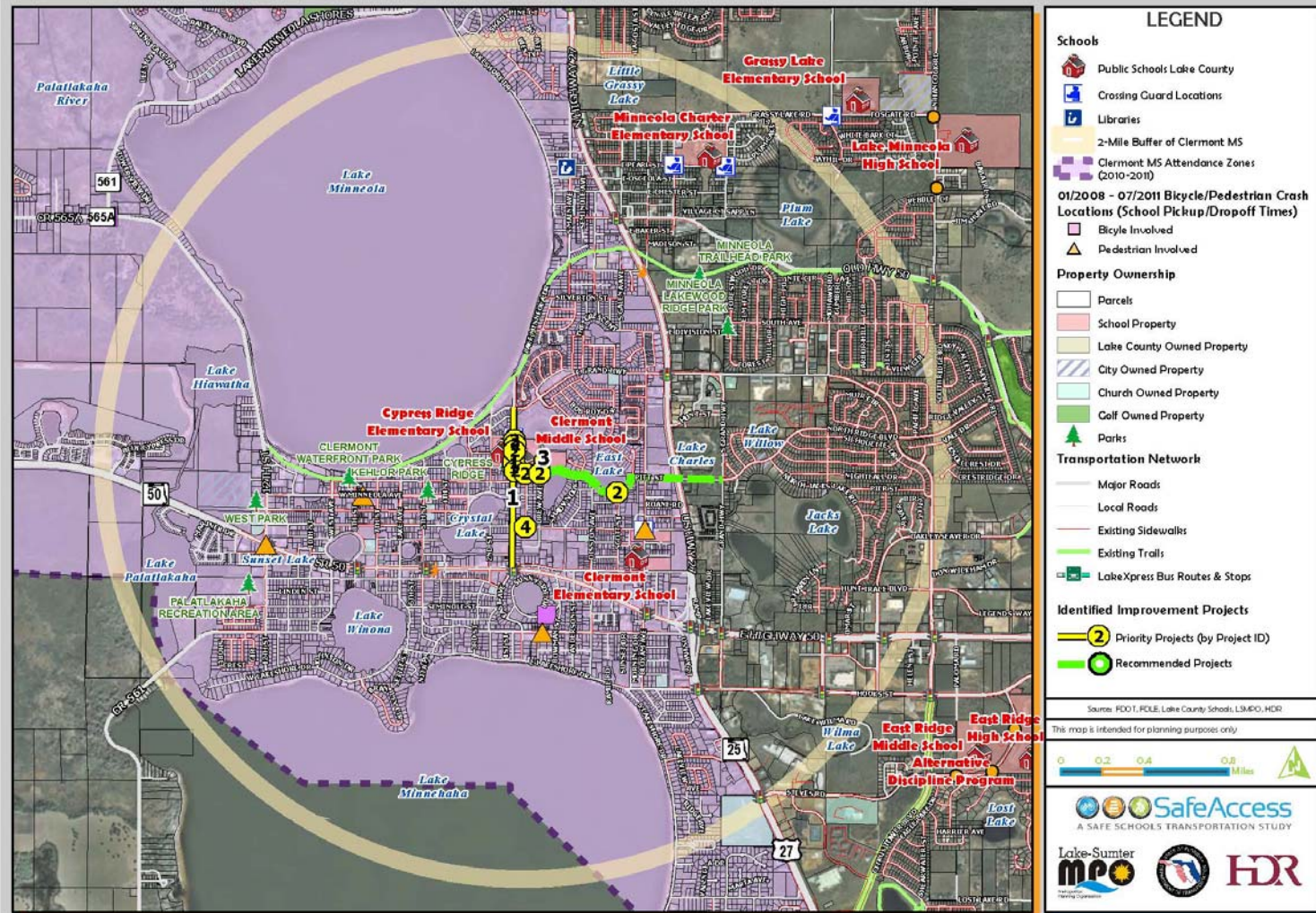
- ✓ The City of Clermont has recently installed several new sidewalks in the vicinity of the school, including sidewalks on School St, Juniata St, & Scott St & Prince Edward Ave between Desoto St and Pitt St
- ✓ The City has a planned project in 2012 to reconstruct East Ave from SR 50 to Lake Minneola, which presents an opportunity to look at pedestrian, bicyclist, parking, and turning traffic needs in this corridor
- ✓ The City has a similar planned project in 2013 or 2014 to reconstruct Pitt St from East Ave to Grand Hwy with potential to consider pedestrian, bicycle, and turning traffic needs

## Recommendations:

- ✓ Coordinate with the City on the planned maintenance/ improvement of these roadways to included needed projects – evaluate turn lanes, on-street parking, curb extensions, etc.



## Clermont Middle School: Transportation Access Master Plan

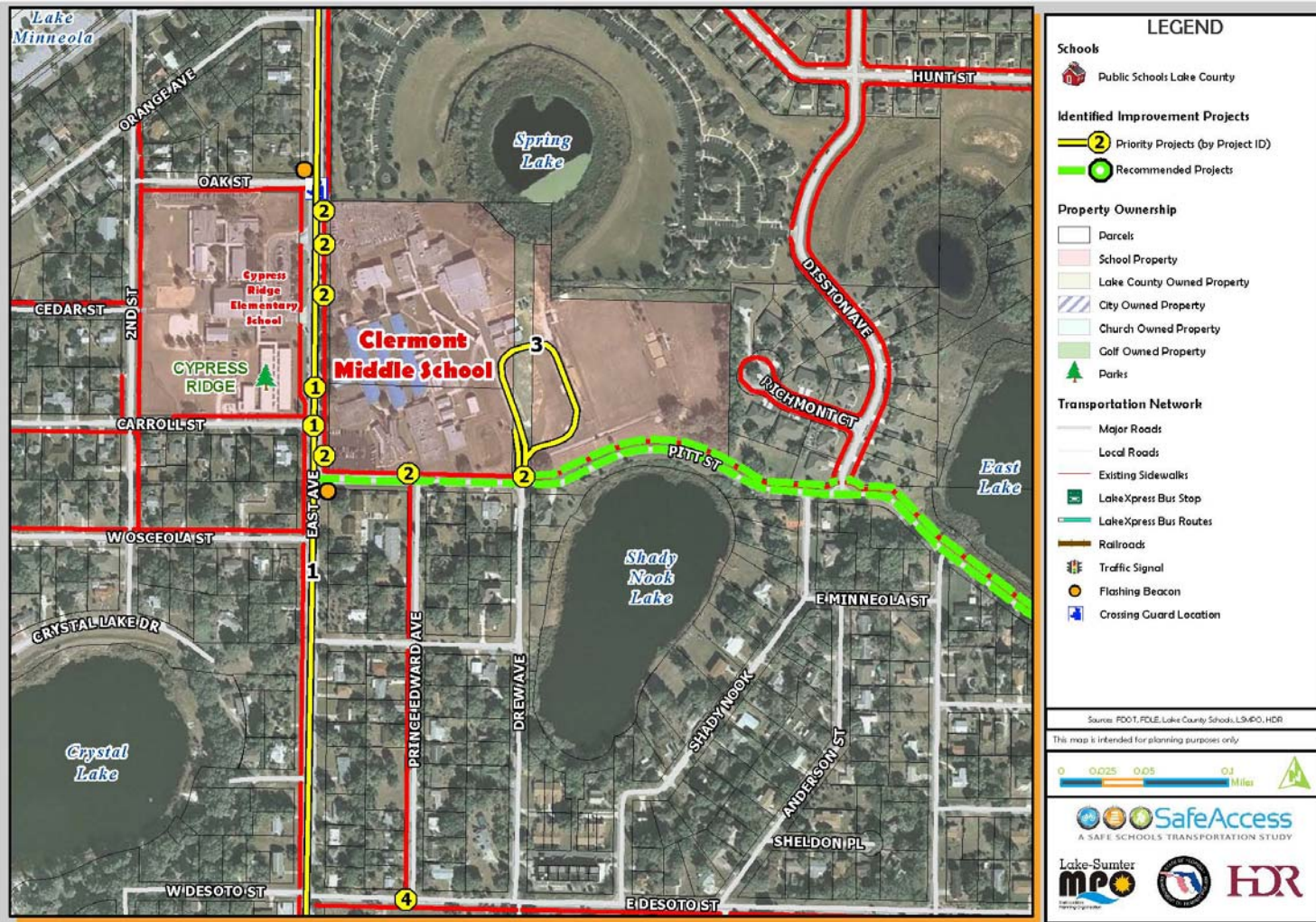


## Clermont Middle School

Project Number	Roadway	Location	Project
1	East Ave	at Carroll St	Construct curb extensions; construct curb ramp on east side of street
	East Ave	at front school entrance	Mark crosswalk (relocate crosswalk at Carroll St)
2	East Ave	at school driveways	Mark crosswalks; some crossings/ramps not smooth & may present tripping hazard
	Pitt St	at Prince Edward Ave	Mark crosswalk, add school crossing signage, and construct curb ramp on N side of street
	Pitt St	at school driveway	Mark crosswalk; add stop bar and stop sign for traffic exiting school driveway
3	Pitt St	at Scott St	Mark crosswalk, add school crossing signage, and construct curb ramp on north side of street
	At school	Pitt St school driveway	Stripe parent drop-off/pick-up loop for 2 lanes, narrowing to 1 prior to pick-up area
	At school	Pitt St school driveway	Connect existing sidewalk on school property to Pitt St sidewalk
4	Desoto St	at Prince Edward Ave	Mark crosswalk, add school crossing signage, and construct curb ramp on south side of street

## Clermont Middle School

### Clermont Middle School: Priority Projects





A SAFE SCHOOLS TRANSPORTATION STUDY

## Clermont Middle School

# Recommended Project #1

## East Avenue Improvements

### Recommendations:

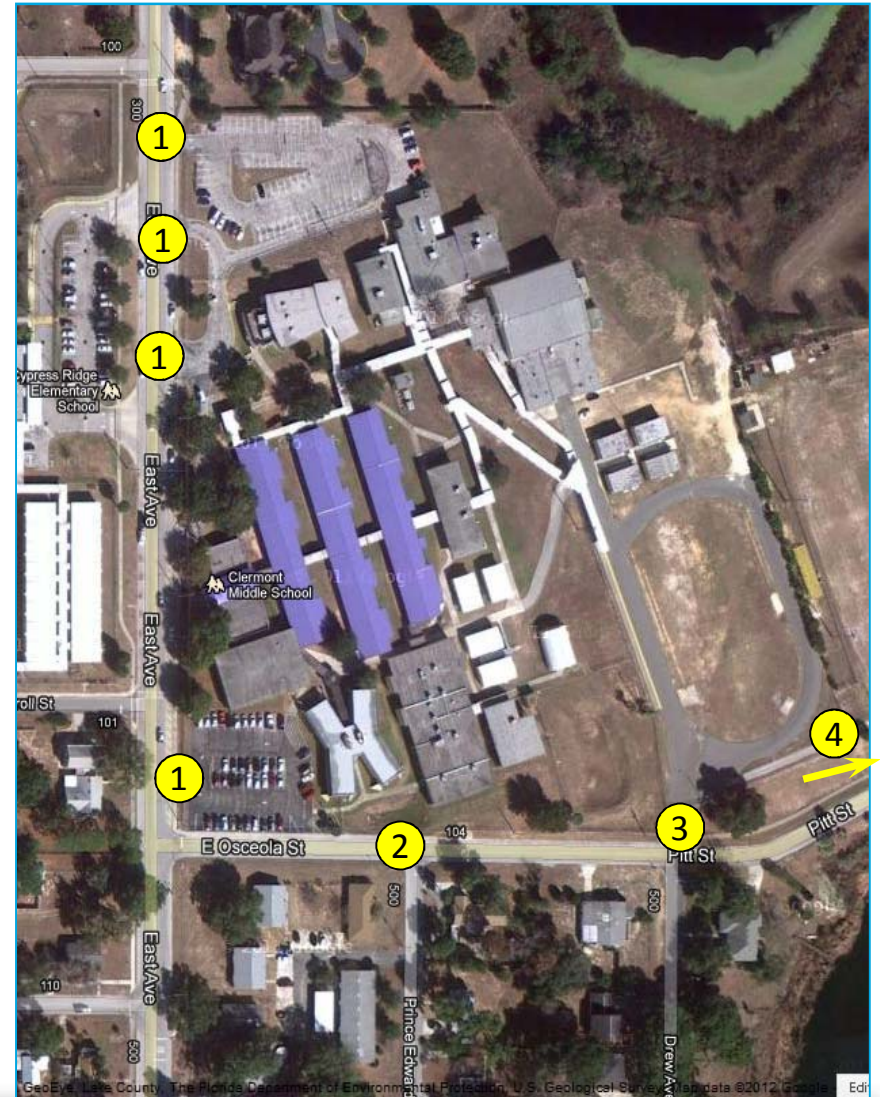
- ✓ The City has planned a reconstruction and resurfacing project for East Ave north of SR 50 for fiscal year 2012. Coordinate with the City to include recommendations within the resurfacing project.
- ✓ There are two potential options for improving the crosswalk on East Ave:
  1. On East Ave, at Carroll St, construct curb extensions and new curb ramps.or
  2. In front of the school entrance, mark a new crosswalk (relocated Carroll St crosswalk). There may be issues with the grade change between the roadway and the existing sidewalk.



©2012 DigitalGlobe, GeoEye, Earthstar (United States), The Florida Department of Environmental Protection, U.S. Geological Survey

### Recommendation:

- ✓ Make crosswalk improvements at the following locations:
  1. Inspect all East Ave school driveways for ADA compliance and trip hazards; modify as needed
  2. Construct curb ramp on the north side of Pitt St at Prince Edward Ave; add high visibility FDOT ladder style crosswalk markings & school crossing signage
  3. Add stop bar and stop sign for exiting traffic from school at Pitt Street and school driveway; add high visibility FDOT ladder style crosswalk markings
  4. Construct curb ramp on the north side of street at Pitt St at Scott St (off map); add high visibility FDOT ladder style crosswalk markings & school crossing signage





A SAFE SCHOOLS TRANSPORTATION STUDY

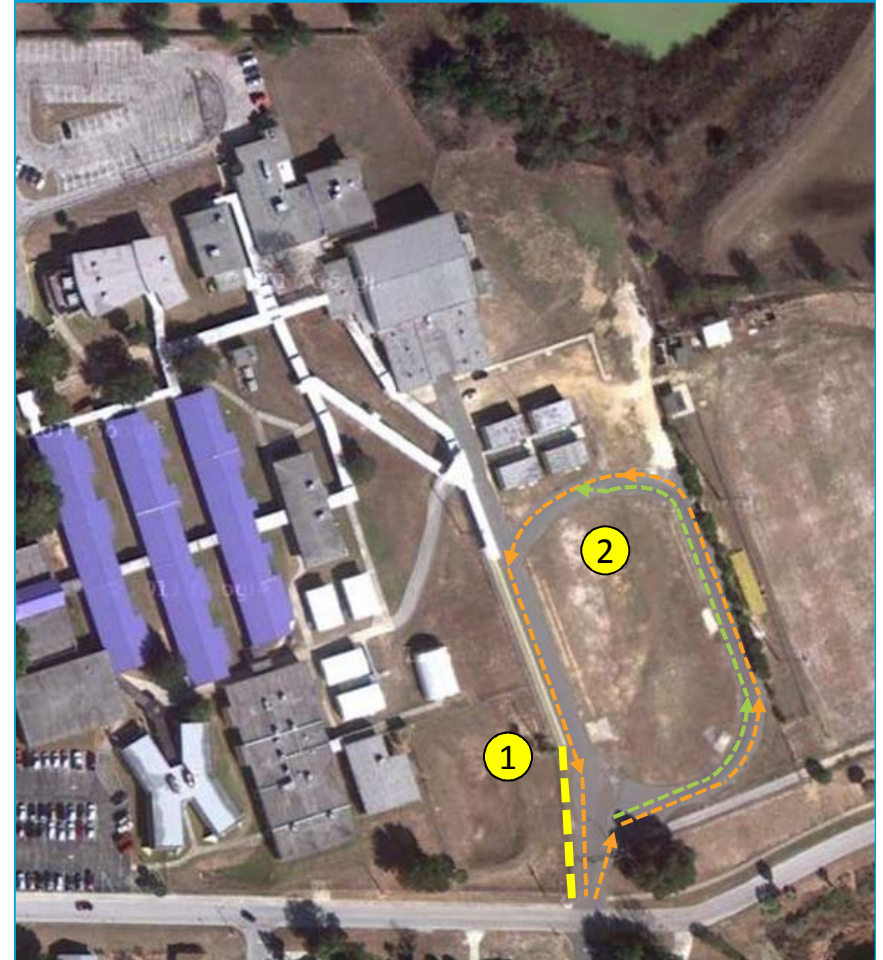
Clermont Middle School

# Recommended Project #3

Drop-off / Pick-Up location improvements

## Recommendation:

- ✓ Restripe the parent drop-off / pick-up loop for two lanes, narrow to one lane prior to pick-up area; signage/markings at lane merge would need to result in self-regulating merging behavior for those picking up students (no staffing to direct traffic at merge point).
- ✓ Connect existing sidewalk on school property to Pitt St sidewalk; will require relocating existing fence.





A SAFE SCHOOLS TRANSPORTATION STUDY

Clermont Middle School

# Recommended Project #4

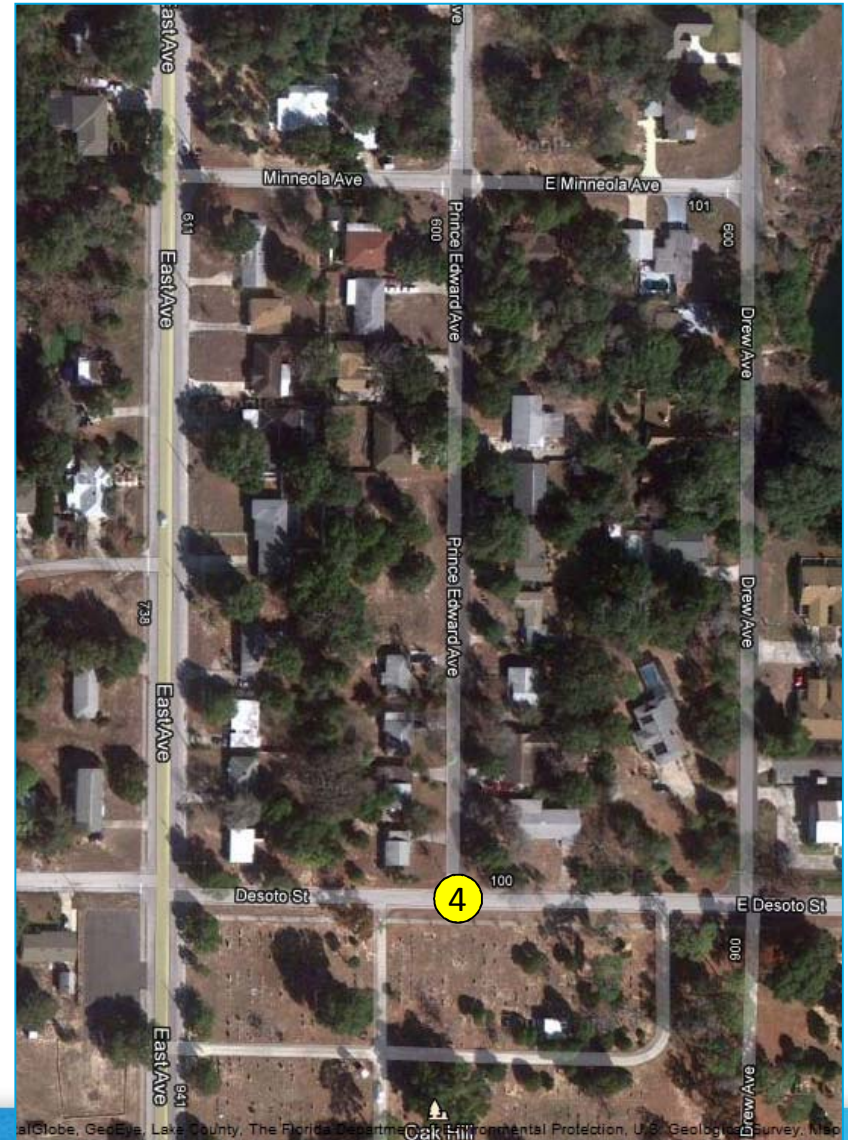
Desoto Street Crosswalk

## Recommendation:

- ✓ Mark the crosswalk adding school crossing signs and construct a curb ramp on the south side of the street at Desoto Street and Prince Edward Avenue.



Desoto St at Prince Edward Ave



at Slope, Georgia, Lake County, The Florida Department of Environmental Protection, U.S. Geological Survey, Map



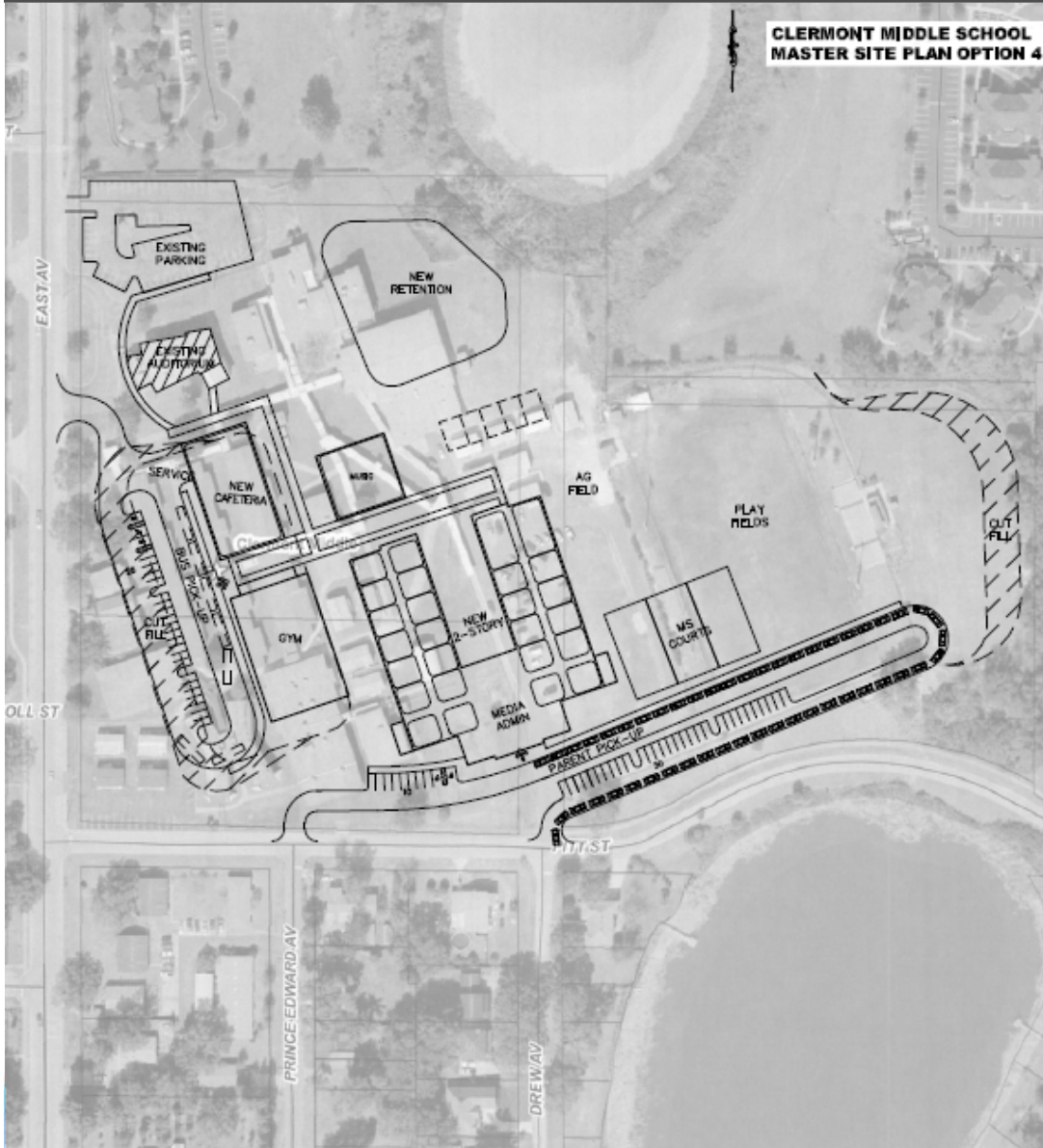
Project Priority	Item	Quantity	Units	Total
2	Crosswalk Stripping	222	ft	\$500.00
2	School Crossing Signage	4	Signs	\$1,200.00
2	Curb Ramps	2	Ramps	\$1,170.00
2	Stop Bar	15	ft	\$60.00
2	Stop Sign	1	Sign	\$300.00
3	Striping	500	ft	\$500.00
3	Sidewalk	148	ft	\$33,100.00
4	Crosswalk Stripping	22	ft	\$50.00

### ESTIMATE BASIS AND ASSUMPTIONS:

- Sidewalk estimates based on estimating tool developed for Phase 1, Estimates for all other improvements based on Unit Costs per FDOT Lake County (Area 7) averages (07/2011 - 06/2012).
- Estimate does not include utility relocation costs, utility relocation assumed by others.
- The mobilization costs are based on 15% of the construction cost and estimates include maintenance of traffic costs (15% of construction costs).
- No Regular excavation & embankment to 1 ft depth is assumed
- No R/W Impact
- No specialized landscaping (beyond sodding) is included.
- Sidewalk is assumed to be 5 feet wide, unit given is in linear feet.

# School Renovation Concept Plan

CLERMONT MIDDLE SCHOOL  
MASTER SITE PLAN OPTION 4



## Findings:

- ✓ School would front on Pitt St
- ✓ Option 4 with modifications preferred
  - ✓ Move gym to east side of main building
  - ✓ Move cafeteria to gym location
  - ✓ Move music building to cafeteria location
  - ✓ Create presence on East Ave by moving admin building there or an architectural feature
- ✓ Concept does not show pedestrian access



Clermont Middle School

## Contact Information

This website represents an ongoing commitment to increase safe access to schools within the Lake~Sumter Metropolitan Planning Organization Planning Area.

Updates to data, and suggestions for programming and project ideas are welcome from all agencies and the general public.

**Mike Woods**

Project Manager, Transportation Planner

(352) 315-0170

[mwoods@lakesumtermpo.com](mailto:mwoods@lakesumtermpo.com)



**Mindy Heath, AICP**

Consultant Project Manager

(407) 420-4200

[Mindy.heath@hdrinc.com](mailto:Mindy.heath@hdrinc.com)



*Promoting Regional  
Transportation Partnerships*