



SafeAccess

A SAFE SCHOOLS TRANSPORTATION STUDY

Groveland Elementary School

Groveland, FL

GROVELAND ELEMENTARY SCHOOL



\$250 FINE

March 2013

HDR





A SAFE SCHOOLS TRANSPORTATION STUDY

Groveland Elementary School

Groveland Elementary School Snapshot

May 8, 2012

Grades: PreK – 5th

Total Students: 858

- Provided Bus Transportation : 462
- Not Provided Bus Transportation: 396
- Buses Assigned to School (10 reg, 5 ESE) 15

Students Living within the “Walk Zone”: 288

- Provided Bus Transportation: 142
- Not Provided Bus Transportation: 146

Observation Day (Sunny)

- Walkers: 150 (est)
- Bike Riders: 2

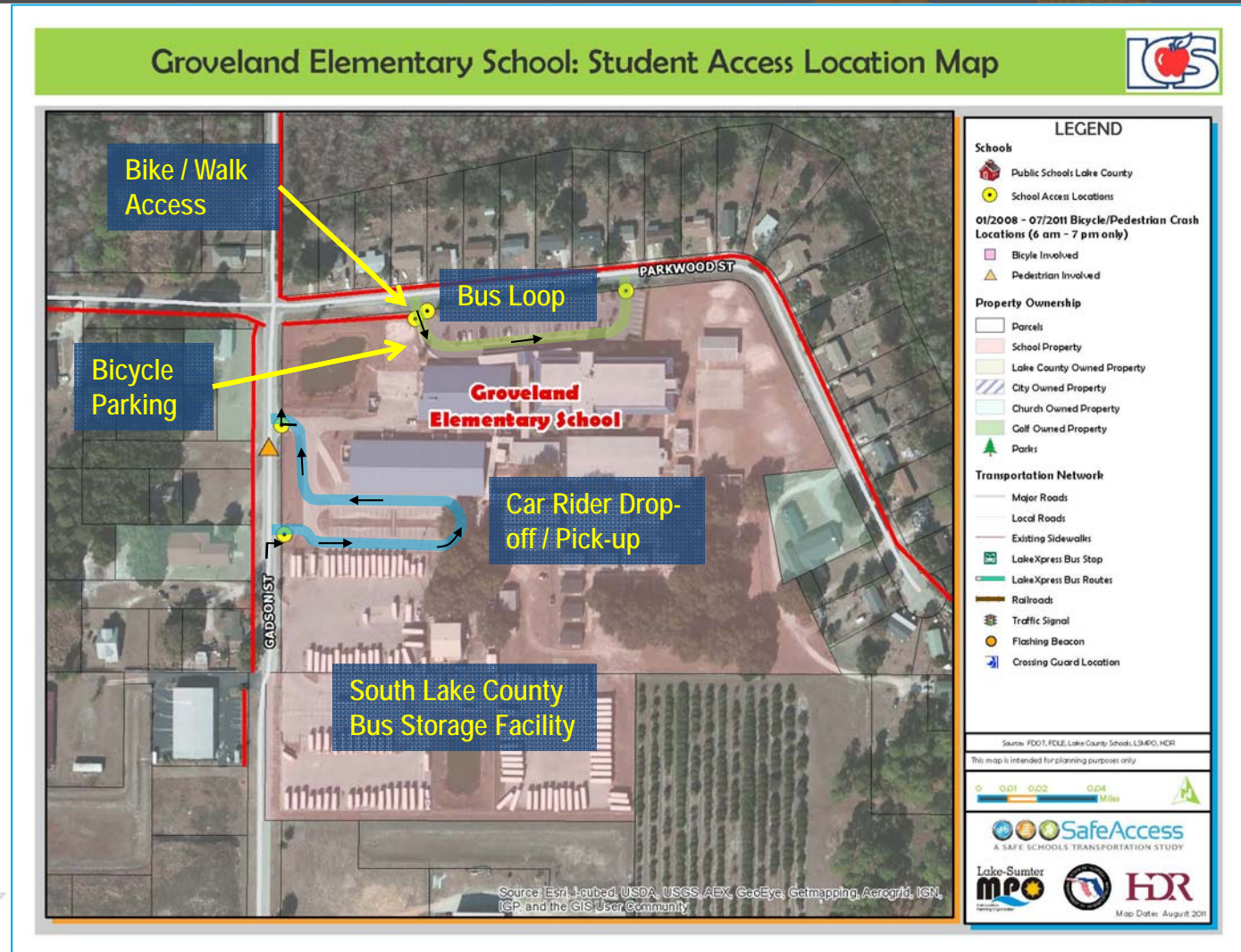


- ✓ Groveland Elementary School website – Click [here](#)
- ✓ City of Groveland website – Click [here](#)
- ✓ Lake County Schools website – Click [here](#)

Groveland Elementary School

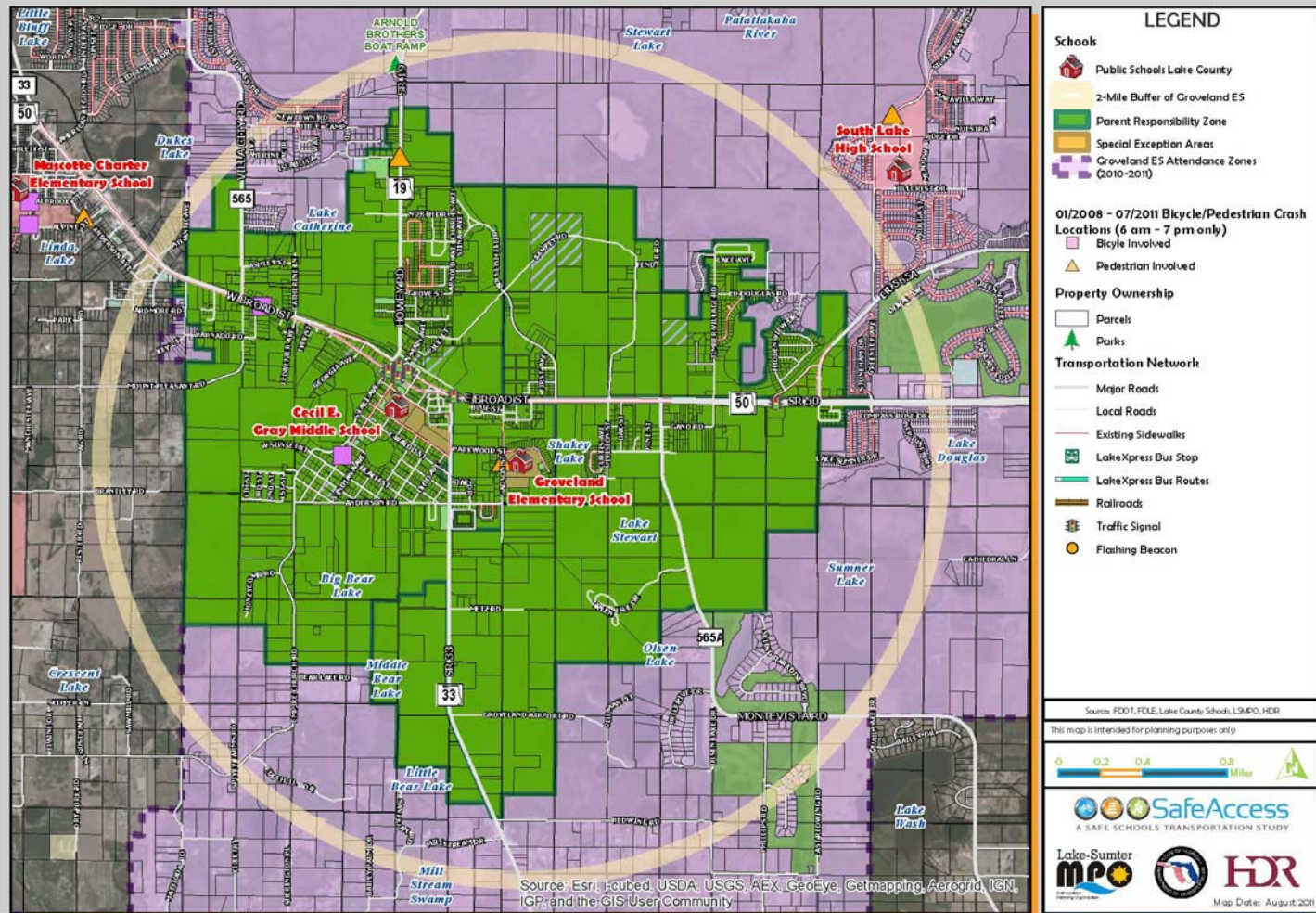
Findings:

- ✓ Bus loop separated from drop-off/pick-up
- ✓ Drop-off/pick-up access via Gadson St; driveway is right-in, right-out only
- ✓ Queuing on Gadson St & Anderson Rd, one-way eastbound / northbound
- ✓ Bike/walk access at front of school via Parkwood St
- ✓ South County bus storage facility is located south of school with access from Gadson St



Attendance and 2-Mile "Walk" Zone Map

Groveland Elementary School: Attendance and 2-Mile "Walk" Zone Map



Arrival and Dismissal Schedule

- 7:00 am:** Start of ELC
- 8:00 am:** Car rider gates open;
student supervision begins
- 8:25 am:** Drop-off gate is closed
- 8:30 am:** School start time
- 3:00 pm:** School end time with
staggered release:
pre-K dismissed first,
followed by K-2, then
grades 3-5; walkers
released from cafeteria;
bus riders released from
classroom when bus arrives



Note: Students are released one hour early on Wednesdays



Findings:

- ✓ 15 buses serve the school (10 regular, 5 ESE); 1 regular bus is shared with Pine Ridge ES
- ✓ Bus arrival is staggered in the AM and PM; buses start to arrive at 8:00 AM and unload only after they reach the overhang
- ✓ Daycare buses drop-off / pick-up on the bus loop
- ✓ No storage issues observed or noted by school staff; each bus is assigned a designated spot on the bus ramp to maximize use of the available space
- ✓ Most bus drivers have 3 routes: ES, MS, and HS
- ✓ Bus riders remain in classroom until called when bus arrives for PM pick-up

Findings:

- ✓ Once gates close at 8:25 AM, parents drop-off at the bus loop
- ✓ Cars queue along the shoulder of Gadson St from Anderson Rd in the PM and are released by grade level as indicated by a staff person (pre-K, then K-2, then 3-5); younger siblings are released with older siblings; implemented to eliminate “cutters”
- ✓ Safety patrol students and school staff help load cars at numbered gates; gates are closed as pick-up slows down and safety patrol leaves
- ✓ Groveland Police Department has declined school’s request to enforce Gadson Street as one-way during PM pick-up period



Afternoon Pick-up Gates

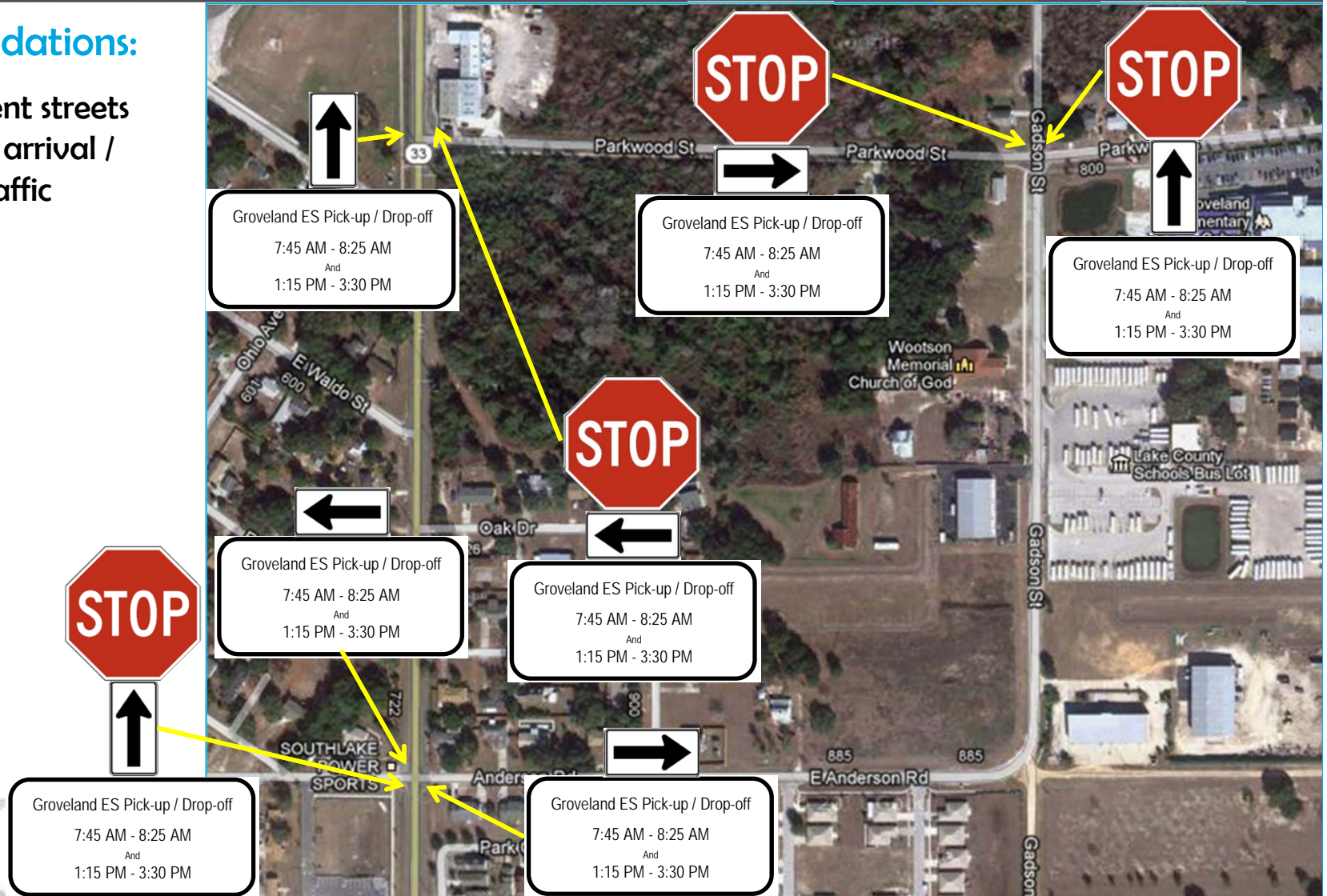


Staff Member Directing PM Pick-up on Gadson St

Groveland Elementary School

Recommendations:

- ✓ Sign adjacent streets with school arrival / dismissal traffic procedures



Findings:

- ✓ Numerous parents observed dropping off students in the bus loop/front parking lot
- ✓ Remote drop-off also observed just before bus ramp entrance on Parkwood St
- ✓ Parents that drop-off/pick-up students at bus ramp/front parking lot are asked to park and walk students between the front office & their vehicle





Recommendations:

- ✓ Block western entrance to parking aisle to discourage “thru” drop-off traffic within aisle
- ✓ Could allow aisle closing as needed (cones, gate, or other barrier)
- ✓ Could also permanently close with curb and landscaping
- ✓ Revise exit to allow vehicles to enter parking area without driving through bus loop

Note: May not discourage all remote drop-off, but will discourage drop-off in the parking lot

Concept for Discouraging Remote Drop-off at the Bus Ramp



A SAFE SCHOOLS TRANSPORTATION STUDY

Groveland Elementary School

Bike/Walk Access



Bike Rack Located in Front of the School

Findings:

- ✓ No walkers observed to use Gadson St south of Parkwood St; most walkers observed to arrive from west on Parkwood St; walkers access school at bus loop entrance; fence runs along sidewalk to keep students out of bus lanes
- ✓ Walkers and bike riders are released from school cafeteria
- ✓ School estimates about 150 students walk or ride a bike to school; 2 bikes were parked on bike rack on observation day
- ✓ There is a sidewalk gap in front of the school
- ✓ About 20 students typically cross at SR 33 in the AM
- ✓ SR 33 crossing guard desires school zone to be lengthened and speed limit reduced to 20 MPH
 - ✓ Existing length of school zone falls within FDOT standards
- ✓ Bike rack is older, “wheel-bender” style which does not adequately support bicycles



Sidewalk Gap in Front of the School



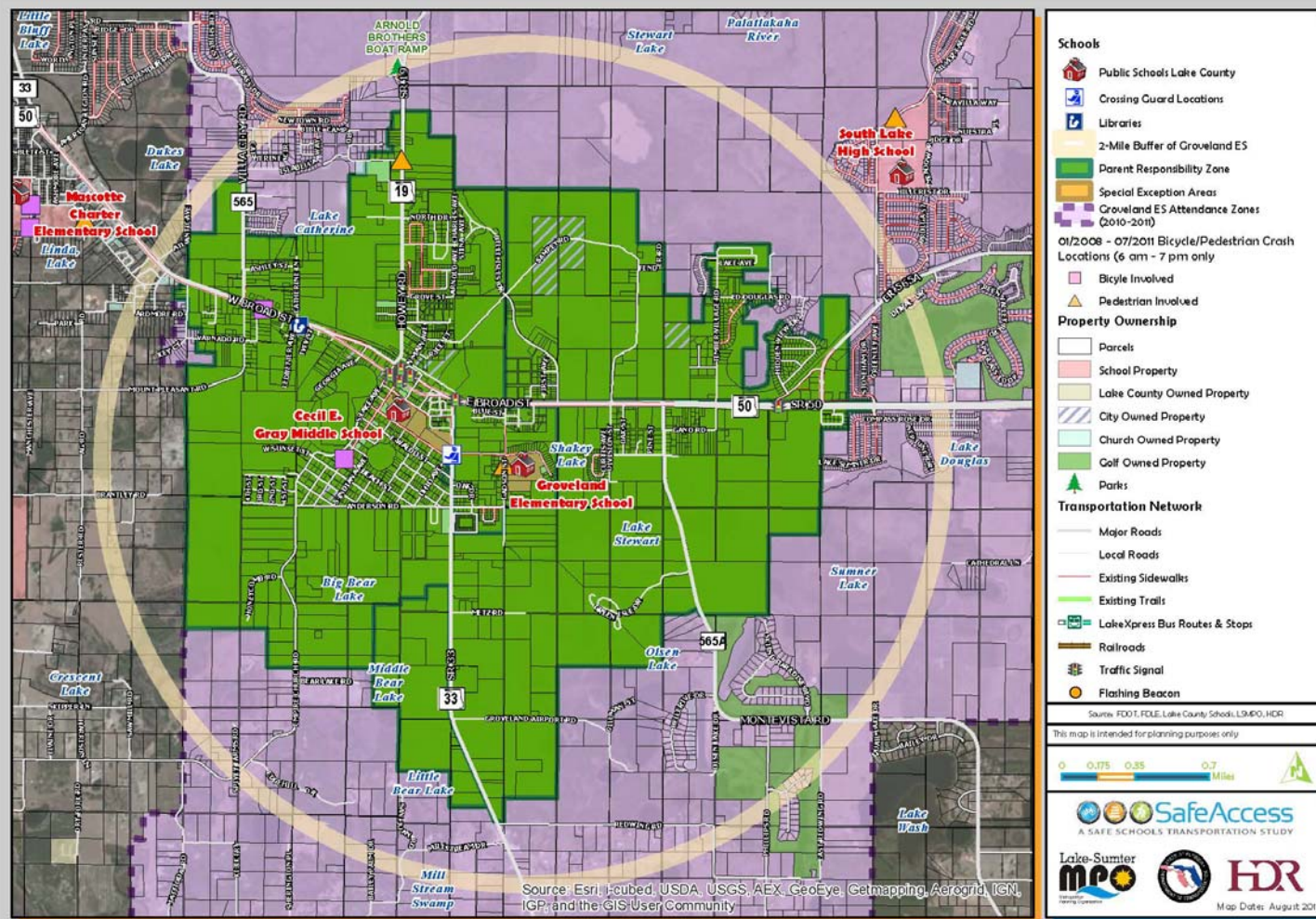
Fenced Sidewalk Along Bus Ramp

Recommendations:

1. Study potential to reduce posted 25 MPH speed limit on SR 33 to 20 MPH within school zone
2. Fix sidewalk gap on Parkwood St east of Gadson St
3. Install a midblock crossing on SR 33 at Parkwood St
4. Install crosswalks at Gadson St and Parkwood St
5. Improve sidewalk on Gadson St north of Parkwood St to 5 ft with a buffer to roadway; extend up to SR 50
6. Extend sidewalk on Gadson St sidewalk south to Anderson Rd and then from Anderson Rd to Oak Dr
7. Install crosswalks on all cross streets near the school
8. Install new bike racks that support bicycles at two points above the wheel hubs

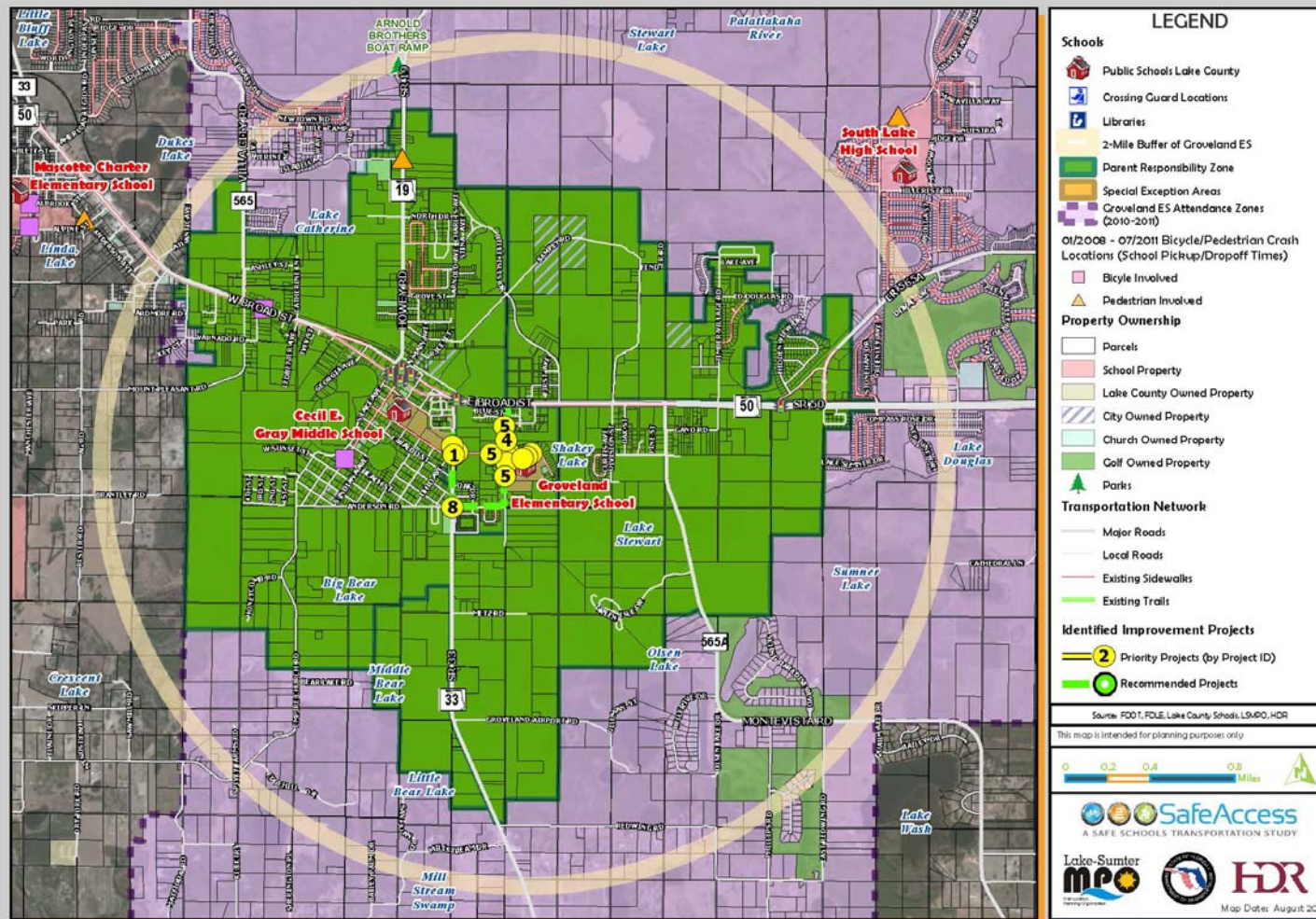


Groveland Elementary School: Existing Conditions Map

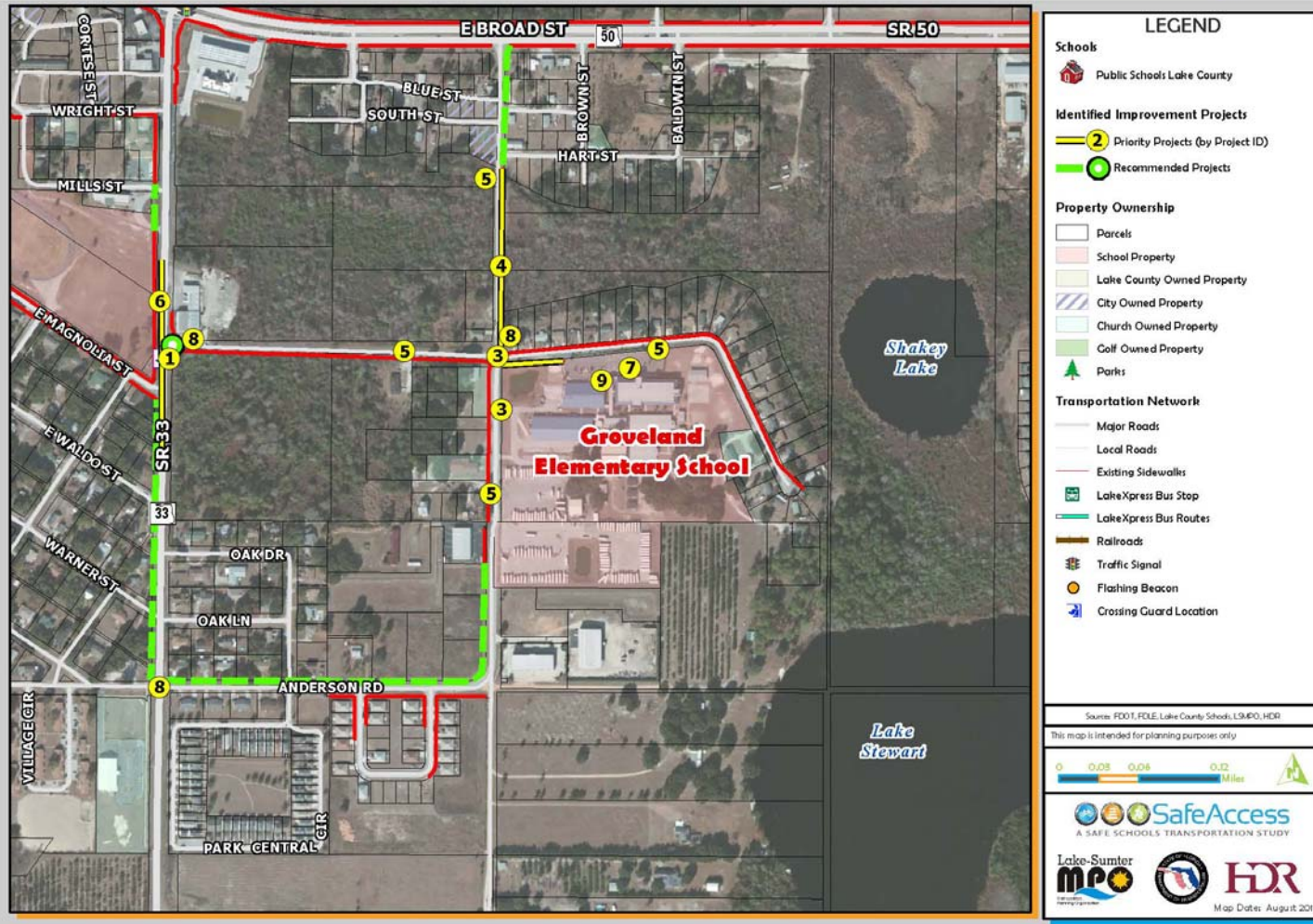


Transportation Access Master Plan

Groveland Elementary School: Transportation Access Master Plan



Groveland Elementary School: Priority Projects





SafeAccess

A SAFE SCHOOLS TRANSPORTATION STUDY

Groveland Elementary School

Priority Project List

Project Number	Roadway	Location	Project
1 *	SR 33	At Parkwood St	Construct sidewalk connector from Parkwood St to SR 33 midblock crossing
2	At School	Gadson St to School Entrance	Repair Parkwood St sidewalk in front of school
3	Parkwood St	At Gadson St	Mark high-visibility crosswalks on south and east legs of Parkwood St / Gadson St intersection
	Gadson St	At Parkwood St	Mark crosswalk across driveway on Gadson St south of Parkwood St (west side)
4	Gadson St	South of Hart St to Parkwood St	Reconstruct Gadson St sidewalk north of Parkwood St (east side of road) to 5' with roadway buffer - substandard width, and located at edge of roadway
5	Parkwood St / Gadson St	Adjacent to School	Replace school zone speed limit signs with new signs that have flashing beacons - Parkwood St, Gadson St
6	SR 33	Existing School Zone Limits	Relocate flashing beacon on SR 33; reduce posted school zone speed to 20 mph
7	At School	Bus Loop Entrance / Exit	Block eastern parking area to discourage "thru" traffic; revise existing exit to allow entrance to parking spaces



A SAFE SCHOOLS TRANSPORTATION STUDY

Groveland Elementary School

Priority Project List

Project Number	Roadway	Location	Project
8*	SR 33	Parkwood St to Anderson St	Install custom signage information drivers of parent pick-up / drop-off route during arrival and dismissal
	Parkwood St	SR 33 to Gadson St	Install custom signage information drivers of parent pick-up / drop-off route during arrival and dismissal
	Gadson St	At Parkwood St	Install custom signage information drivers of parent pick-up / drop-off route during arrival and dismissal
9	At School	Bicycle Rack	Replace bicycle racks

NOTE: * Projects also benefit Cecil Gray Middle School



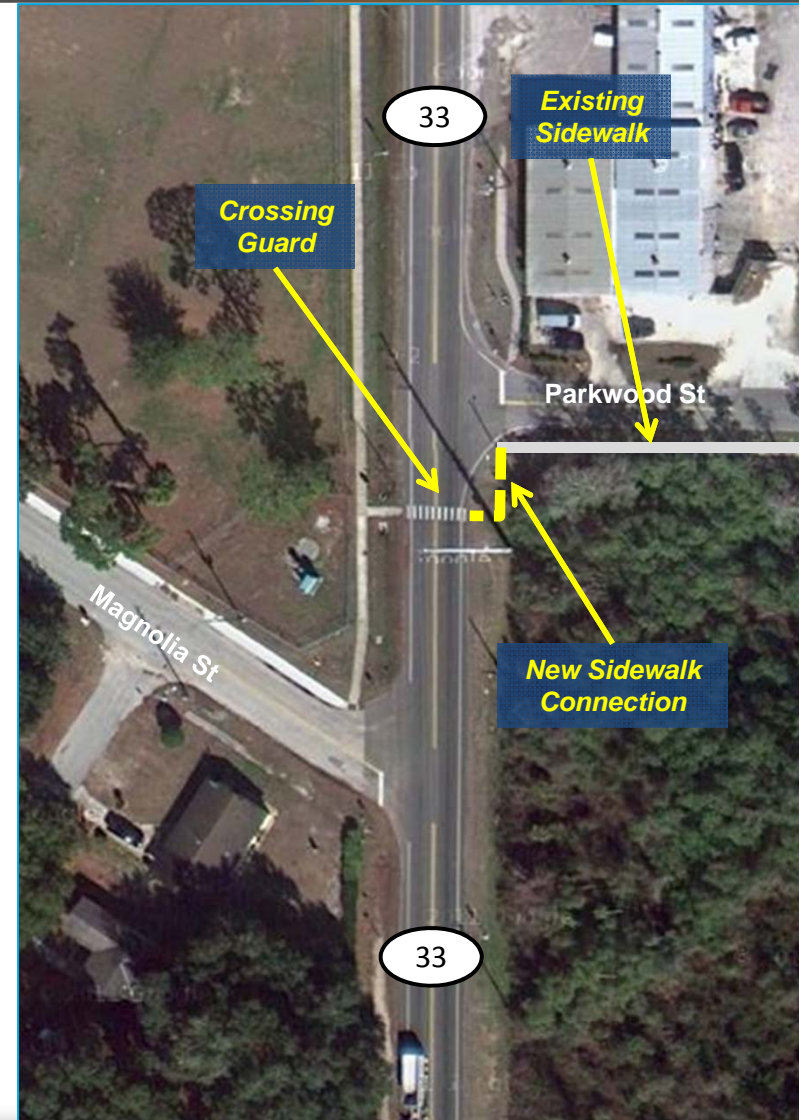
Priority Projects:

1. Build sidewalk connection
2. Repair sidewalk on Parkwood St
3. Install high-visibility crosswalks
4. Improve sidewalk on Gadson St north of Parkwood St
5. Install speed limit signs with flashing beacons
6. Further study to reduce posted speed limit to 20 MPH; relocate flashing beacon
7. Reroute vehicle flow in the parking lot to discourage remote drop-off / pick-up
8. Sign adjacent streets with school arrival / dismissal traffic procedures
9. Replace school bicycle rack



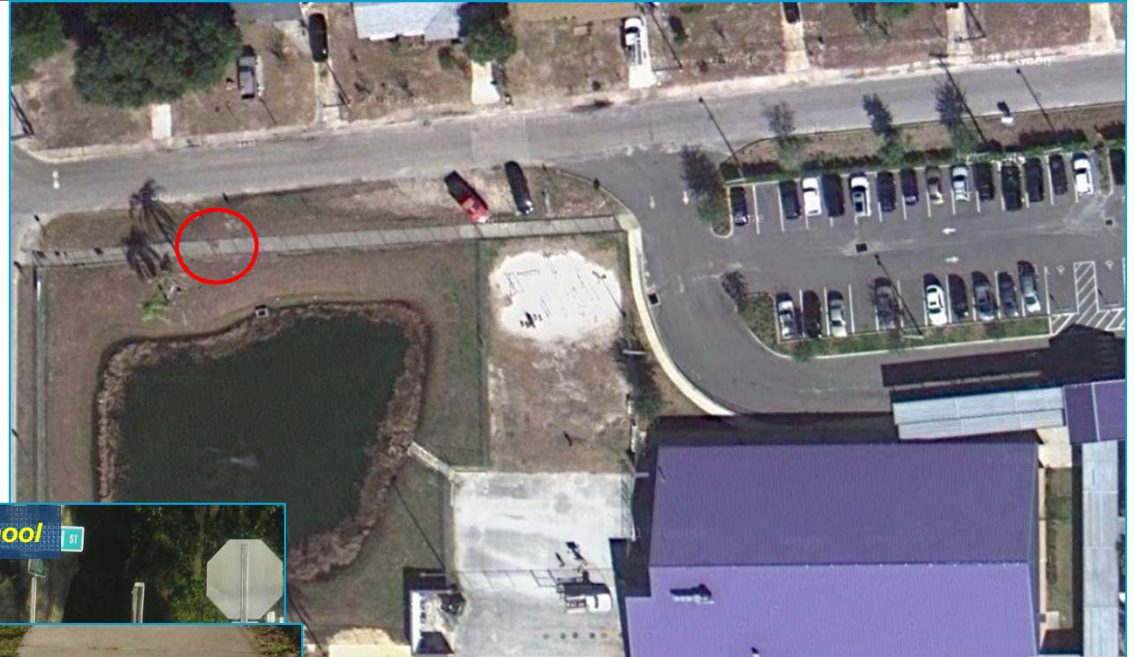
Recommendation:

- ✓ Construct missing sidewalk connection to crosswalk on SR 33 at Parkwood St



Recommendation:

- ✓ Fix the missing piece of sidewalk in front of the school
 - ✓ Poses a safety hazard to wheelchair pedestrians and bicyclists
 - ✓ Tripping hazard to walkers



Recommendation:

- ✓ Mark FDOT style high-visibility crosswalks on south and east legs of Parkwood St / Gadson St intersection and across driveway on Gadson St



Findings:

- ✓ Several students were observed to walk home north on Gadson St
- ✓ Existing sidewalk stops just south of Hart St and is of substandard width located at the edge of the roadway

Recommendation:

- ✓ Reconstruct Gadson St sidewalk north of Parkwood St (east side of road) to 5 ft with roadway buffer





A SAFE SCHOOLS TRANSPORTATION STUDY

Groveland Elementary School

Priority Project #5

Install Flashing Beacons

Recommendations:

- ✓ Replace school zone speed limit signs with new signs that have flashing beacons along Parkwood St and Gadson St

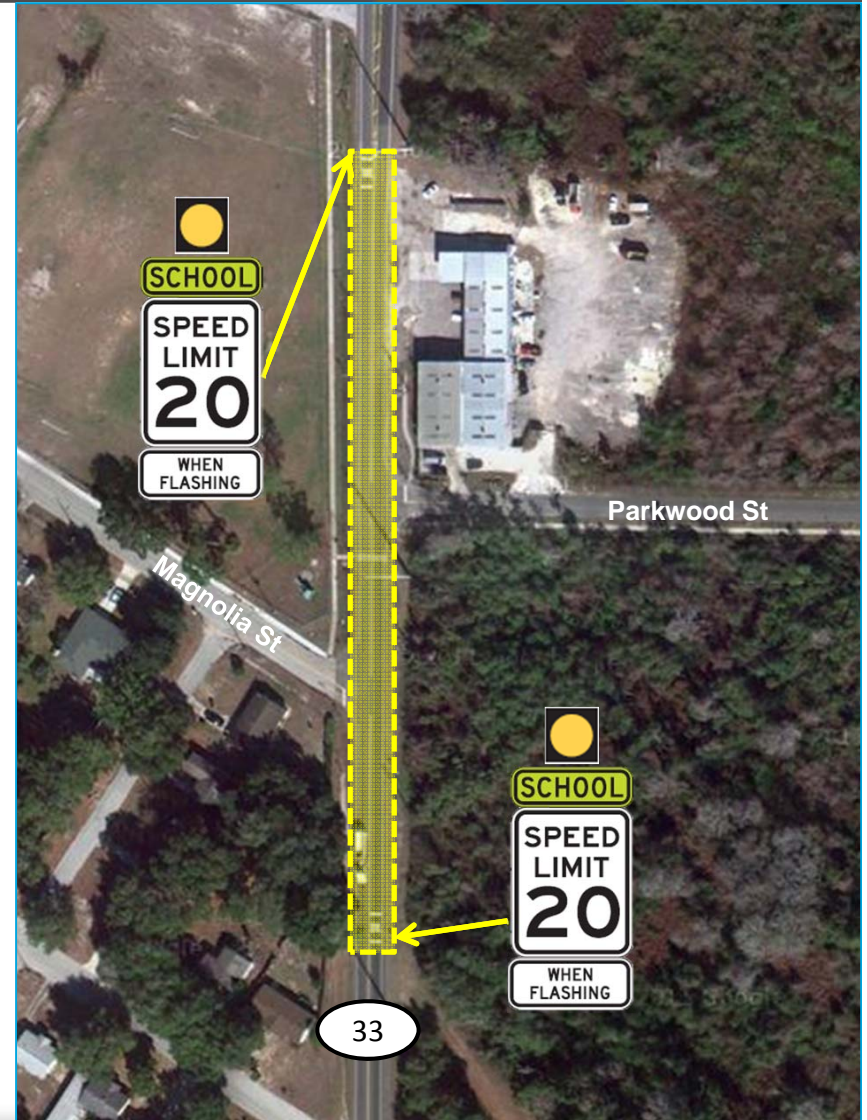


Findings:

- ✓ Crossing guard at SR 33 and Parkwood St expressed a desire that the school zone speed limit be reduced from 25 MPH to 20 MPH

Recommendations:

- ✓ Reduce speed limit within the school zone to 20 MPH
- ✓ Shift location of flashing beacon on SR 33 in southbound direction approximately 40 feet to the north to meet the minimum 200 ft distance from crosswalk



Priority Project #7

Main Parking Lot Improvements



Findings:

- ✓ Several parents observed “remote” dropping-off students in the main entrance parking lot at the bus loop

Recommendations:

- ✓ Place cones or some other barrier prohibiting vehicles from entering the parking space area from the school entrance
- ✓ Re-designate the bus loop exit as an entrance / exit so late arriving faculty and parents needing to pick up student for appointments do not have to drive through the bus line

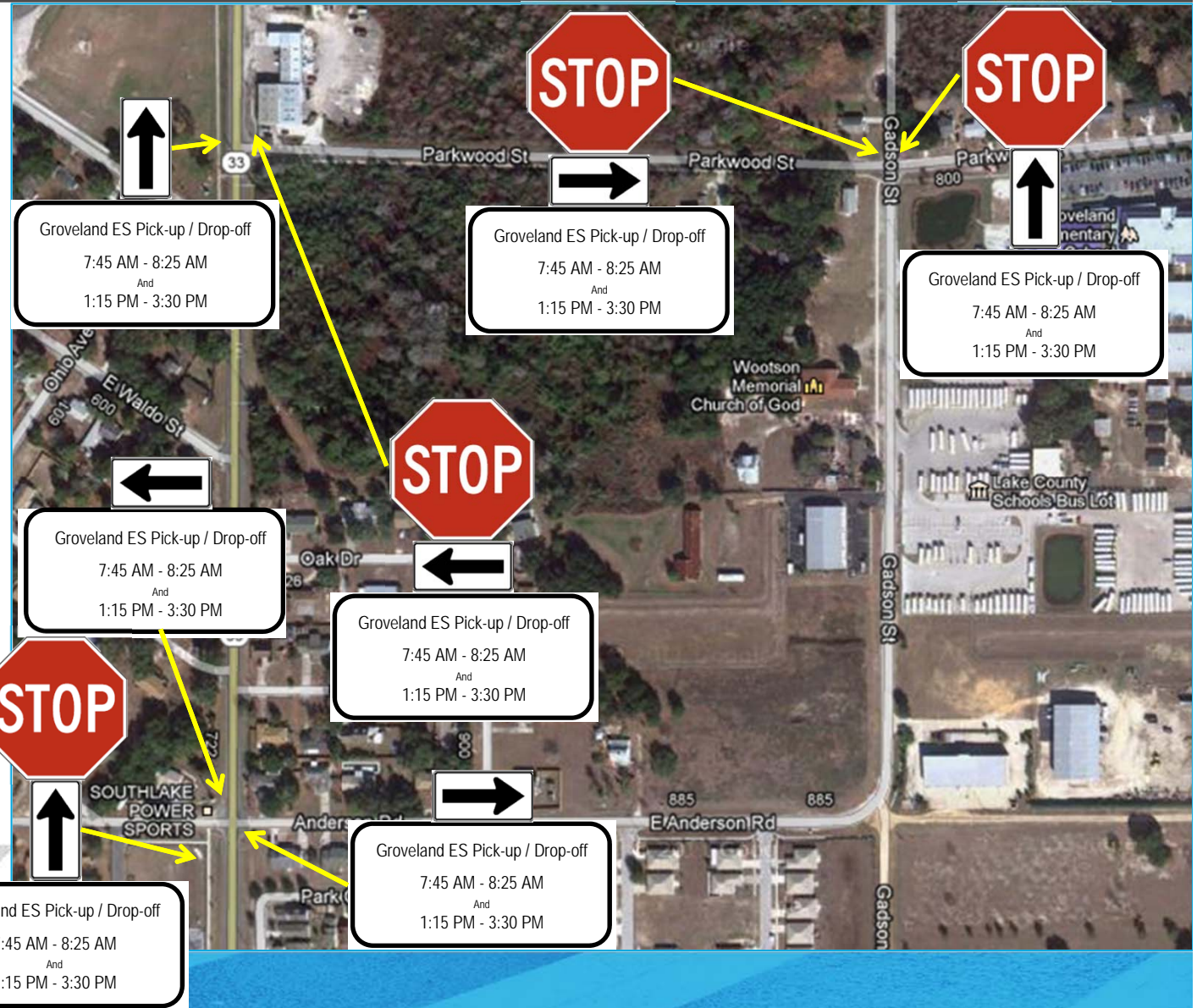
Concept for Discouraging Remote Drop-off at the Bus Ramp

Findings:

- ✓ During drop-off and pick-up, Gadson St functions as a one-way roadway
- ✓ Groveland PD will not allow the school to enforce one-way during arrival / dismissal

Recommendations:

- ✓ Sign streets around school to notify drivers and parents of the arrival / dismissal traffic flow / pattern





Existing Bicycle Racks

Findings:

- ✓ Bicycle racks are older “wheel bender” design and do not adequately support bicycles at two points above the wheel hubs

Recommendations:

- ✓ Replace racks - Inverted “U” design preferred



Sample of Permanent Bicycle Racks

Priority #	Item	Quantity	Units	Cost Estimate
1	Sidewalk	50	ft	\$24,900.00
2	Sidewalk	7	ft	\$21,100.00
3	Crosswalk	24	ft	\$54.00
3	Crosswalk	22	ft	\$49.00
3	Crosswalk	31	ft	\$69.00
4	Sidewalk	728	ft	\$79,800.00
5	Speed Zone Signs	4	Signs	\$2,000.00
7	Close Parking	25	sy	\$16,000.00
7	Parking Lot Signs	2	Signs	\$600.00

ESTIMATE BASIS AND ASSUMPTIONS:

- Sidewalk estimates based on estimating tool developed for Phase 1, Estimates for all other improvements based on Unit Costs per FDOT Lake County (Area 7) averages (07/2011 - 06/2012).
- Estimate does not include design costs, CEI costs, or utility relocation costs, utility relocation assumed by others.
- The mobilization costs are based on 15% of the construction cost and estimates include maintenance of traffic costs (15% of construction costs).
- Regular excavation & embankment to 1 ft depth is assumed
- No R/W costs included
- No specialized landscaping (beyond sodding) is included.
- Sidewalk is assumed to be 5 feet wide, unit given is in linear feet.

Project Number	Roadway	Location	Project
1	Parkwood St	At SR 33	Mark crosswalk on east leg of SR 33/Parkwood St intersection & relocate stop line to behind crosswalk
2	Gadson St	SR 50 to south of Hart St	Extend sidewalk along east side
3	Gadson St	South of Parkwood St to Anderson St	Construct sidewalk on Gadson St from existing terminus south of Parkwood St to Anderson St
4	Anderson St	Gadson St to SR 33	Construct sidewalk on north side; add midblock crossings at Stewart Lake Loop and Oak Dr / Park Central Cir
5	SR 33	Parkwood St	Construct missing sidewalk on SR 33 north of Parkwood St in front of James L. Wyche Senior Center

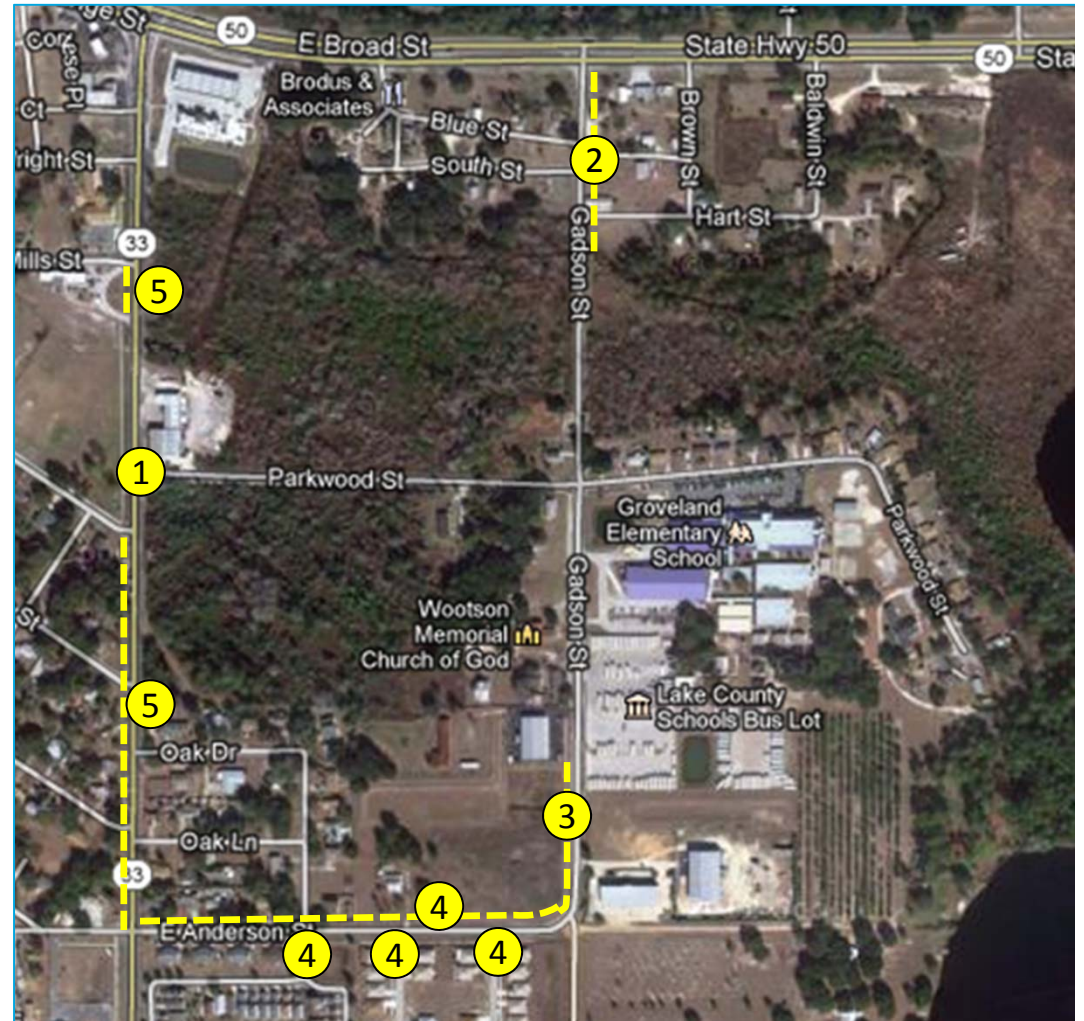


Other Sidewalk / Crosswalk Projects

Other Projects:

1. Mark crosswalk on east leg of SR 33 / Parkwood St intersection *
2. Extend Gadson St sidewalk from south of Hart St to SR 50 (east side)
3. Construct new sidewalk on Gadson St from existing sidewalk to Anderson St
4. Construct new sidewalk on Anderson St; add midblock crossings at cross streets
5. Close sidewalk gap on SR 33 and construct new sidewalk on SR 33 from Magnolia St to Anderson Rd*

NOTE: * Projects also benefit Cecil E. Gray Middle School





A SAFE SCHOOLS TRANSPORTATION STUDY

Groveland Elementary School

Contact Information

This website represents an ongoing commitment to increase safe access to schools within the Lake~Sumter Metropolitan Planning Organization Planning Area.

Updates to data, and suggestions for programming and project ideas are welcome from all agencies and the general public.

Mike Woods

Project Manager, Transportation Planner

(352) 315-0170

mwoods@lakesumtermpo.com



Mindy Heath, AICP

Consultant Project Manager

(407) 420-4200

mindy.heath@hdrinc.com



*Promoting Regional
Transportation Partnerships*