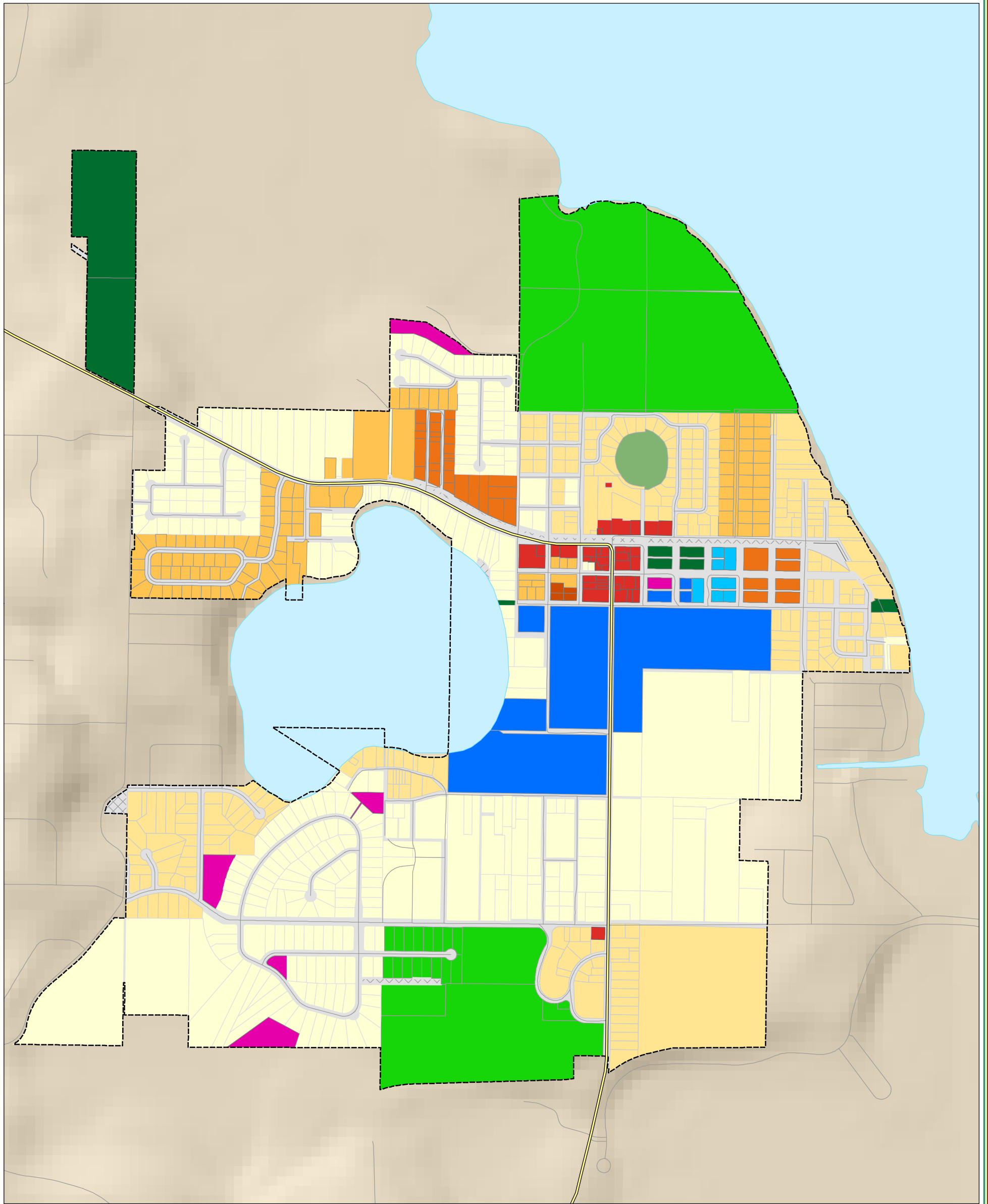


TOWN OF MONTVERDE LAKE COUNTY, FLORIDA

FUTURE LAND USES AND FUTURE PLANNING AREA



LEGEND

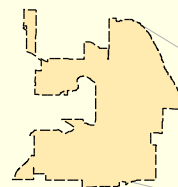
- Municipal Area
- County Road
- State Road
- US Highway
- Turnpike

Future Landuse Categories

- | | | |
|----------------------------------|---|-------------------------|
| <all other values> | Multi-Family | Agricultural |
| Single Family Low Density | Recreational | Utilities |
| Single Family Medium Density | Commercial General | Utility Open Space |
| Single Family Affordable Housing | Office/Residential/Commerrcial District | Conservation Open Space |
| Single/Multi-Family Mixed | Institutional | Right of Way |



TOWN OF MONTVERDE
1704 6TH STREET
MONTVERDE, FL 34756
WWW.MYMONTVERDE.COM



0 500 1,000 2,000
1 INCH EQUALS 1,000 FEET

LAST AMENDED:
MARCH 15, 2015

DATA SOURCES:
Town of Montverde Land use designations
Lake County GIS Department, Planimetrics
Data Compilation and Map production by the
Lake-Sumter Metropolitan Planning Organization
This map product was prepared from a Geographic Information System established by the Town of Montverde, the Lake-Sumter Metropolitan Planning Organization, and Lake County Board of County Commissioners. Its employees, agents and personnel, make no warranty as to its accuracy, and in particular its accuracy as to labeling, dimensions, contours, property boundaries, or placement or location of any map features thereon. The Town of Montverde, the Lake-Sumter Metropolitan Planning Organization and Lake County Board of County Commissioners, its employees, agents and personnel MAKE NO WARRANTY OF MERCHANTABILITY OR WARRANTY FOR FITNESS OF USE FOR A PARTICULAR PURPOSE EXPRESS OR IMPLIED WITH RESPECT TO THIS MAP PRODUCT. Independent verification of all data contained on this map product should be obtained by any user of this map.