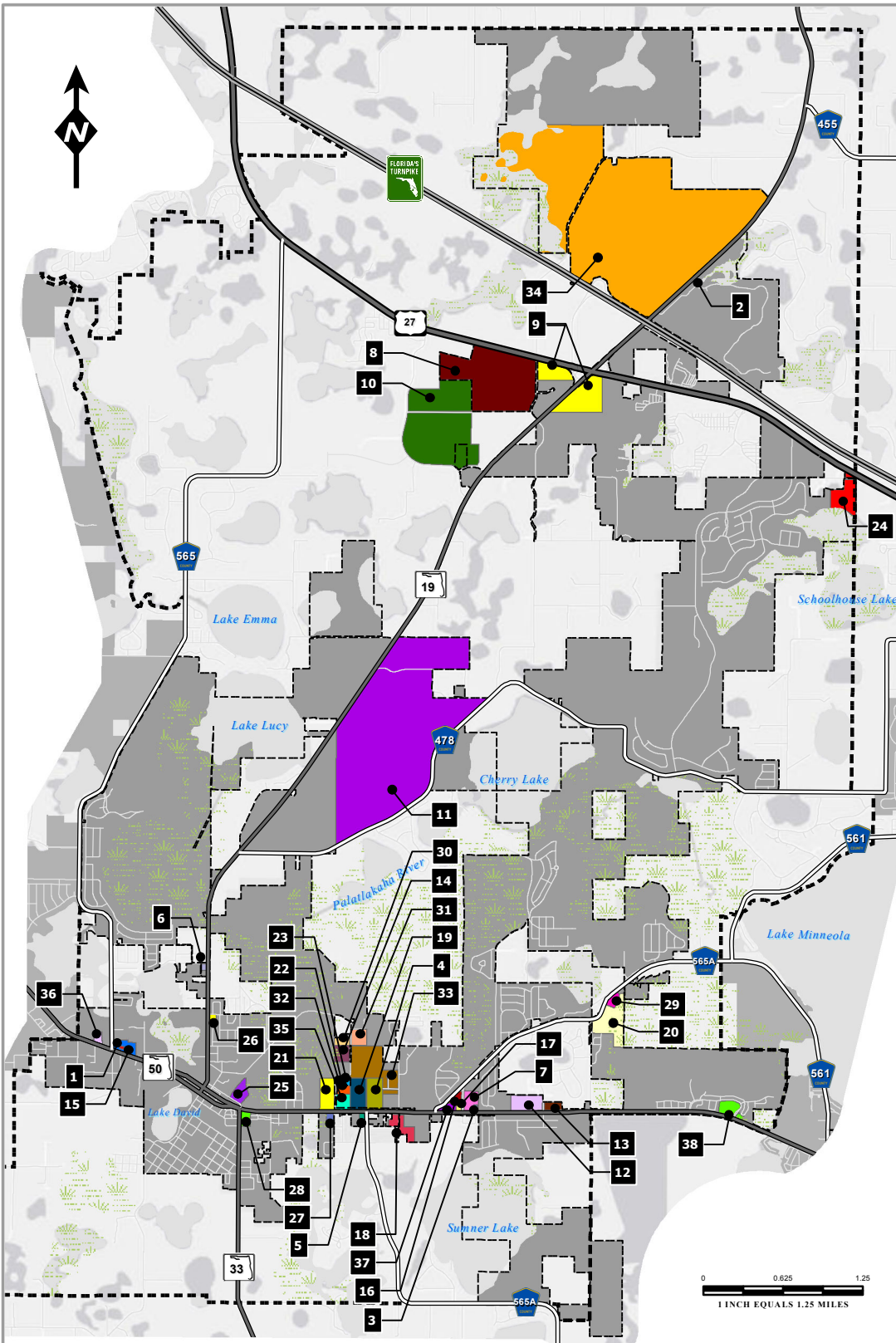


# CITY OF GROVELAND LAKE COUNTY, FLORIDA

# CAPITAL IMPROVEMENT PROGRAM COMMERCIAL & INDUSTRIAL DEVELOPMENTS

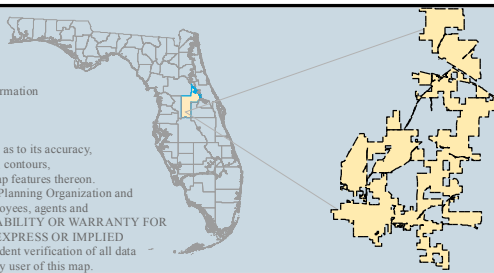


## Current and Proposed Commercial and Industrial Developments

- 1, Ace Hardware (Groveland Place)
- 2, Blue Spring Reserve
- 3, Burger King at Eagle Ridge Shoppes
- 4, BWC Trusses Inc
- 5, Campbell Property (Montevista Rd)
- 6, Campbell Property (SR 19/Bible Camp Rd)
- 7, Eagle Ridge Shoppes
- 8, First Park
- 9, Future Commercial
- 10, Future Industrial Location
- 11, Future Mixed Use Location
- 12, Green Valley Commons
- 13, Green Valley Point
- 14, Groveland Industrial Park
- 15, Groveland Place
- 16, Groveland Shoppes
- 17, Hess (Groveland Shoppes)
- 18, Hope International Church, Habitat for Humanity Thrift Store, and Uniqco Steel
- 19, Howard Fertilizer
- 19, Howard Fertilizer
- 21, Indian Hills Produce, Inc
- 22, International Sterilization Laboratory
- 23, J. Malever Construction, Inc
- 24, Lakeridge Business Park
- 25, Margaret Woodcraft, Inc
- 26, Osprey Cove Non-residential
- 27, Progressive Plumbing
- 28, Racetrac
- 29, Raney Components
- 30, RK Industrial Park
- 31, Seidle Timber Village Industrial
- 32, South Waste Services, Inc
- 33, Timber Village Industrial Park
- 34, TTITT industrial
- 35, Veolia Environmental Services
- 36, Villa City Plaza
- 37, Walgreen's (Groveland Shoppes)
- 38, Waterside Pointe Non-Residential

**DATA SOURCES:**  
City of Groveland Capital Improvement Program  
Lake County GIS Department; Planimetrics  
Data Compilation and Map production by  
Lake-Summer Metropolitan Planning Organization

This map product was prepared from a Geographic Information System established by the City of Groveland, the Lake-Summer Metropolitan Planning Organization, and Lake County Board of County Commissioners. Its employees, agents and personnel, make no warranty as to its accuracy, and in particular its accuracy as to labeling, dimensions, contours, property boundaries, or placement or location of any map features thereon. The City of Groveland, the Lake-Summer Metropolitan Planning Organization and Lake County Board of County Commissioners, its employees, agents and personnel MAKE NO WARRANTY OF MERCHANTABILITY OR WARRANTY FOR FITNESS OF USE FOR A PARTICULAR PURPOSE EXPRESS OR IMPLIED WITH RESPECT TO THIS MAP PRODUCT. Independent verification of all data contained on this map product should be obtained by any user of this map.



### LEGEND

- Municipal Area
- Future Planning Area
- County Road
- State Road
- US Highway
- Turnpike

MAP COMPOSITION:  
MAY 31, 2012

