

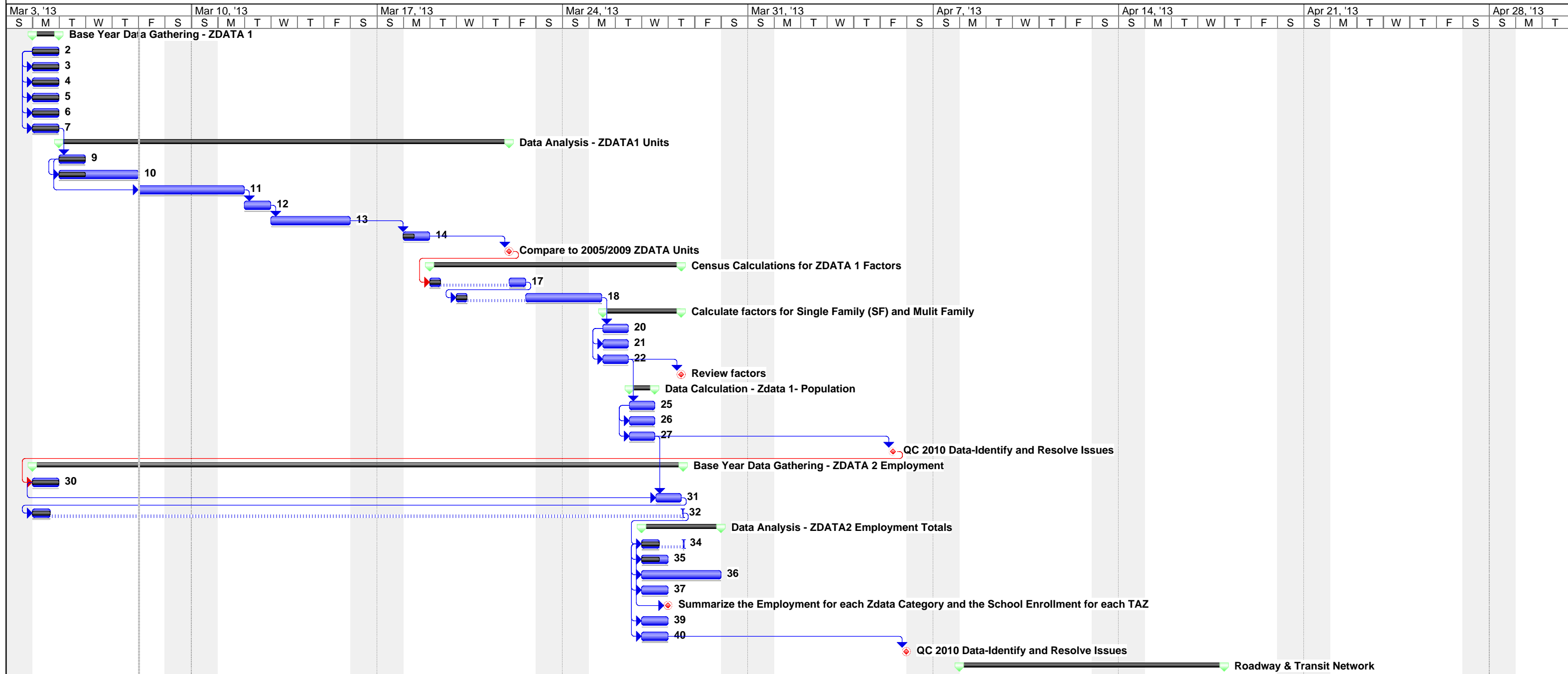
LSMPO Base Year ZData Development and Network Review Schedule

ID	Task Name	Duration	Start	Finish	Predecessors	% Complete	% Work Complete	Filename/Notes	Week		
									F	S	M
1	Base Year Data Gathering - ZDATA 1	1 day?	Mon 3/4/13	Mon 3/4/13		100%	100%				
2	Obtain Parcel Data from Property Appraiser (ftp://ftp.co.lake.fl.us/GIS/)	1 day	Mon 3/4/13	Mon 3/4/13		100%	100%				
3	Obtain Mobile Home Park & RV Information (http://www.doh.state.fl.us/Environment/community/mobile/index.html)	1 day	Mon 3/4/13	Mon 3/4/13	2SS	100%	100%				
4	Obatin Apartment & Condominium Information (http://www.myfloridalicense.com/dbpr/sto/file_download/public-records-lodging.html)	1 day?	Mon 3/4/13	Mon 3/4/13	2SS	100%	100%				
5	Obtain Hotel Information (http://www.myfloridalicense.com/dbpr/sto/file_download/public-records-lodging.html)	1 day?	Mon 3/4/13	Mon 3/4/13	2SS	100%	100%				
6	Obtain Census Tracts and Blocks Shapefiles (www.census.gov)	1 day?	Mon 3/4/13	Mon 3/4/13	2SS	100%	100%				
7	Obtain CFRPM v6.0 TAZs (sent to MPOs on 5/31/2012)	1 day?	Mon 3/4/13	Mon 3/4/13	2SS	100%	100%				
8	Data Analysis - ZDATA1 Units	13 days?	Tue 3/5/13	Thu 3/21/13		16%	16%				
9	Assign each TAZ to a Census Tract and Block	1 day?	Tue 3/5/13	Tue 3/5/13	7	100%	100%	CFRPMv6_TAZ_Points_Tract_SJ.dbf			
10	Assign each Parcel (built 2010 and prior) to a TAZ	3 days?	Tue 3/5/13	Thu 3/7/13	9SS	33%	33%	Sumter_County_Parcels_withTAZs.dbf, Lake_County_			
11	Review the Property Appraisers Department of Revenue (DOR) Use Codes and assign to a Zdata Category	2 days?	Fri 3/8/13	Mon 3/11/13	9SS	0%	0%	send to Pam			
12	Geocode Mobile Home, Apartment and Hotel Data	1 day?	Tue 3/12/13	Tue 3/12/13	11	0%	0%	check to see if data is geocoded			
13	Research internet to determine unit counts for Apartments and Hotels, if needed	3 days	Wed 3/13/13	Fri 3/15/13	12	0%	0%				
14	Summarize the Parcels into Zdata Categories using the DOR Codes and Unit Counts	1 day	Mon 3/18/13	Mon 3/18/13	13	25%	25%	SumtercountyparcelswithTAZ.xls, LakeCountyparcelsw			
15	Compare to 2005/2009 ZDATA Units	3 days	Tue 3/19/13	Thu 3/21/13	14	0%	0%				
16	Census Calculations for ZDATA 1 Factors	7.5 days?	Tue 3/19/13	Thu 3/28/13		7%	5%				
17	Obtain Census Data Tables - B25032, B25004, B25033	1 day?	Tue 3/19/13	Fri 3/22/13	15	25%	25%				
18	Assign data to the corresponding TAZ based on Census Tract or Block Group	1 day?	Wed 3/20/13	Mon 3/25/13	17	25%	25%				
19	Calculate factors for Single Family (SF) and Mulit Family	3 days?	Mon 3/25/13	Thu 3/28/13		0%	0%				
20	Vacancy1 - Percent Vacant Permanent and Non-Permanent Units	1 day?	Mon 3/25/13	Tue 3/26/13	18	0%	0%				
21	Vacancy 2 - Percent Vacant Permanent Units	1 day?	Mon 3/25/13	Tue 3/26/13	20SS	0%	0%				
22	People per Household	1 day?	Mon 3/25/13	Tue 3/26/13	20SS	0%	0%				
23	Review factors	2 days	Tue 3/26/13	Thu 3/28/13	22	0%	0%				
24	Data Calculation - Zdata 1- Population	1 day?	Tue 3/26/13	Wed 3/27/13		0%	0%				
25	Calcuate SF and MF Poulation based on factors in Line 18	1 day?	Tue 3/26/13	Wed 3/27/13	22	0%	0%				
26	Review Hotel/Motel Occupancy Rates	1 day?	Tue 3/26/13	Wed 3/27/13	25SS	0%	0%				
27	Calculate Hotel/Motel Population	1 day?	Tue 3/26/13	Wed 3/27/13	25SS	0%	0%				
28	QC 2010 Data-Identify and Resolve Issues	7 days	Wed 3/27/13	Fri 4/5/13	27	0%	0%				
29	Base Year Data Gathering - ZDATA 2 Employment	18.6 days?	Mon 3/4/13	Thu 3/28/13		63%	10%				
30	Obtain InfoUSA data	1 day?	Mon 3/4/13	Mon 3/4/13	28	100%	100%				
31	Obtain Woods&Poole Employment Totals for Base Year (controls total)	1 day?	Wed 3/27/13	Thu 3/28/13	30SS,27	0%	0%				
32	Obtain School Enrollment and Locations (Public and Private Schools)	1 day?	Mon 3/4/13	Thu 3/28/13	31	90%	90%				
33	Data Analysis - ZDATA2 Employment Totals	3 days?	Wed 3/27/13	Fri 3/29/13		20%	17%				
34	Geocode School Locations (Check Private Schools)	1 day?	Wed 3/27/13	Thu 3/28/13	32	90%	90%				
35	Assign each School Location to a TAZ	1 day?	Wed 3/27/13	Wed 3/27/13	34SS	90%	90%				
36	Review location of businesses geocoded to zipcode level	3 days	Wed 3/27/13	Fri 3/29/13	34SS	0%	0%				
37	Assign each InfoUSA point to a TAZ	1 day?	Wed 3/27/13	Wed 3/27/13	34SS	0%	0%				
38	Summarize the Employment for each Zdata Category and the School Enrollment for each TAZ	1 day?	Wed 3/27/13	Wed 3/27/13	34SS	0%	0%				
39	Summarize Woods&Poole data to each zdata 2 category	1 day?	Wed 3/27/13	Wed 3/27/13	34SS	0%	0%				
40	Factor the InfoUSA data to the Woods&Poole totals for each zdata category	1 day?	Wed 3/27/13	Wed 3/27/13	34SS	0%	0%				
41	QC 2010 Data-Identify and Resolve Issues	7 days	Thu 3/28/13	Fri 4/5/13	40	0%	0%				
42	Roadway & Transit Network	8 days	Mon 4/8/13	Wed 4/17/13		0%	13%				

Project: CFRPMv6_LSMPO_PreValid:
Date: Fri 3/8/13

Task Progress Summary External Tasks Deadline
 Split Milestone Project Summary External Milestone

LSMPO Base Year ZData Development and Network Review Schedule



Project: CFRPMv6_LSMPO_PreValid;
Date: Fri 3/8/13

Task		Progress		Summary		External Tasks		Deadline	
Split		Milestone		Project Summary		External Milestone			