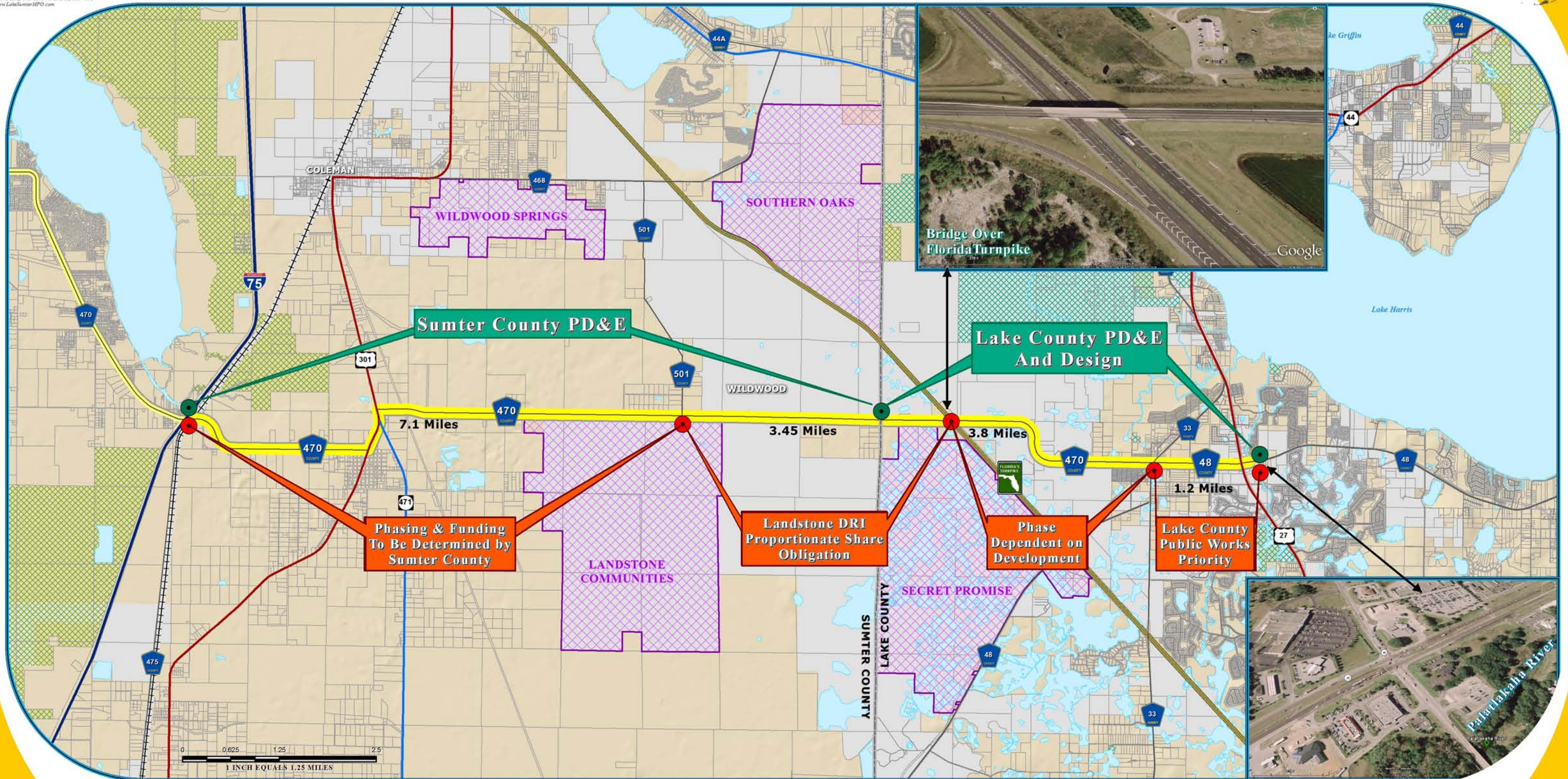


CR470 & CR48 CORRIDOR STUDY PROJECT FUNDING IDENTIFICATION



\\LAKESUMTERMPO\GIS\ProjectSpecific\Map\Roadway\Projects\CR470_Corridor\ProjectStatus_11x17.mxd - 8/17/2011 @ 10:48:27 AM

FOCUS AREA



TRANSPORTATION PLANNING AREA SUMTER AND LAKE COUNTY, FLORIDA



- County Road
- State Road
- US Highway
- Interstate
- Turnpike
- +++ Active Railroad

- Water Body
- Public Lands Managed by Federal Agency
- Public Lands Managed by State Agency
- Public Lands Managed by Local Agency

DATA SOURCES:
Map data provided by Lake and Sumter County GIS Departments. Data Completion and Map production completed by the Lake-Sumter Metropolitan Planning Organization.
This map is a product of the Lake-Sumter Metropolitan Planning Organization. It was created by the Lake-Sumter Metropolitan Planning Organization and its employees, agents and personnel, and the necessary permits to access and publish the necessary geographic information system (GIS) data, including property boundaries, are provided as a condition of use. The Lake-Sumter Metropolitan Planning Organization and Lake County Board of County Commissioners do not warrant, agree and assume no liability for the accuracy, completeness, or timeliness of the data. The Lake-Sumter Metropolitan Planning Organization and Lake County Board of County Commissioners do not warrant, agree and assume no liability for the accuracy, completeness, or timeliness of the data. The Lake-Sumter Metropolitan Planning Organization and Lake County Board of County Commissioners do not warrant, agree and assume no liability for the accuracy, completeness, or timeliness of the data.

MAP COMPOSITION:
MAY, 2010