

Homeowner's Association Meeting

State Road 44 (CR 44B)

From SR 500 (US 441) to SR 44 (Orange Ave)

Financial Project ID 409870-1-52-01

January 15, 2014



Civil Rights

The proposed plan has been developed in accordance with the Civil Rights Act of 1964 and the Civil Rights Act of 1968. Under Title VI and Title VIII of the United States Civil Rights Acts, any person(s) or beneficiary who believes they have been subjected to discrimination because of race, color, religion, sex, age, national origin, disability, or familial status may file a written complaint with the Florida Department of Transportation's Equal Opportunity Office in Tallahassee or contact the District's Title VI/Title VIII Coordinator.

Tallahassee Office: Florida Department of Transportation, Equal Opportunity Office, Title VI/VIII Coordinator, 605 Suwannee Street, MS 65, Tallahassee, Florida 32399-0450. Telephone (850) 414-4747.

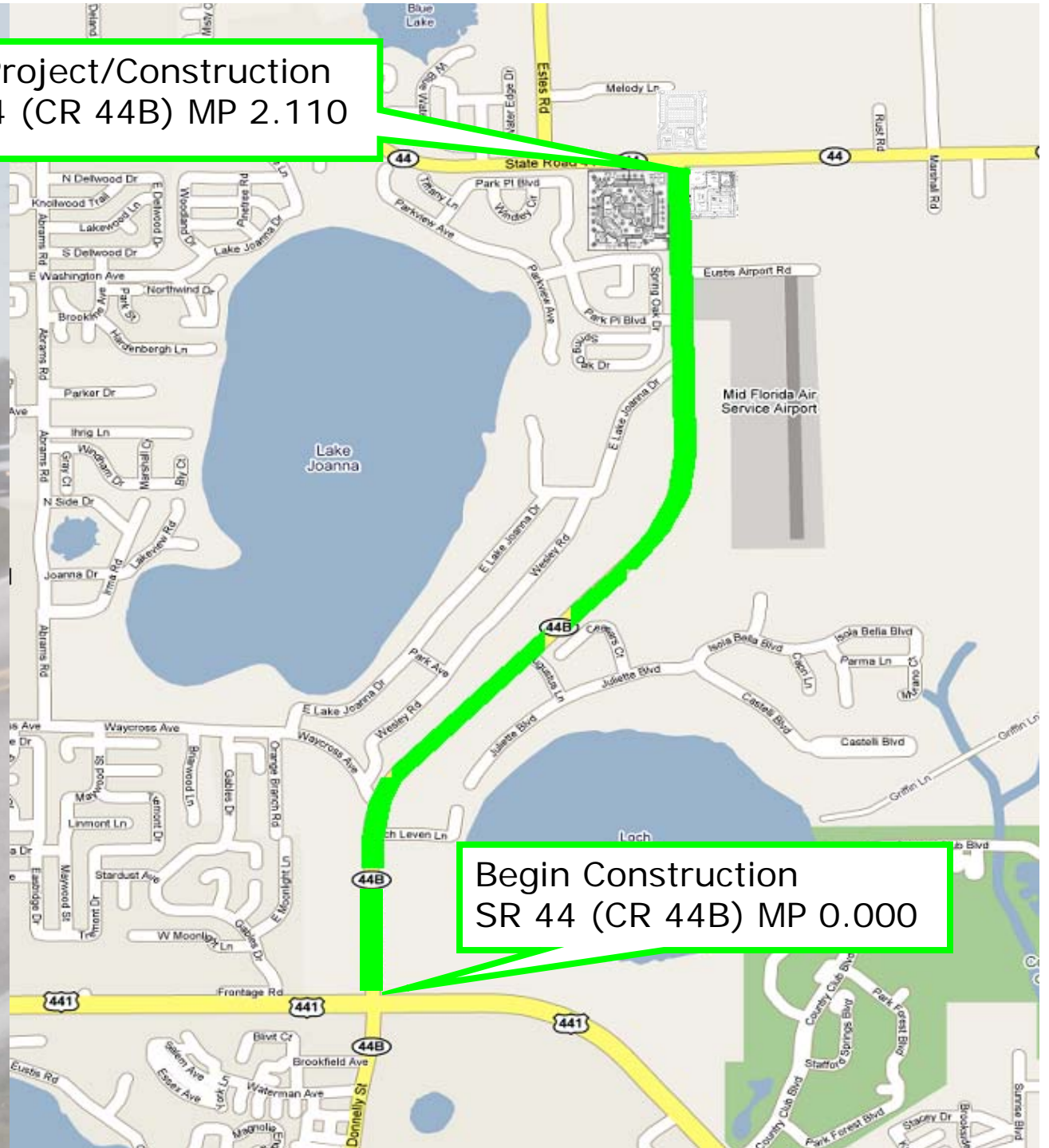
District 5: Florida Department of Transportation,
District 5, Title VI/VIII Coordinator,
719 S. Woodland Blvd, Deland, Florida 32720
Telephone (386) 943- 5367.



Project Location Map

End Project/Construction
SR 44 (CR 44B) MP 2.110

Begin Construction
SR 44 (CR 44B) MP 0.000



Project Objectives

- **Meet the demands of the growing traffic volumes**
 - Existing Traffic Volumes = 18,200 AADT
 - Average growth rate = 4.99% per year
 - Future Traffic Volumes = 29,700 AADT (2030)
- **Improve safety due to high Truck Volumes**
 - Truck Traffic = 11.23% of AADT's
- **Reduce Congestion**
 - Existing LOS = C
 - Future LOS (without improvements) = F
 - Future LOS (with improvements) = B
- **Improve pedestrian and vehicular safety**

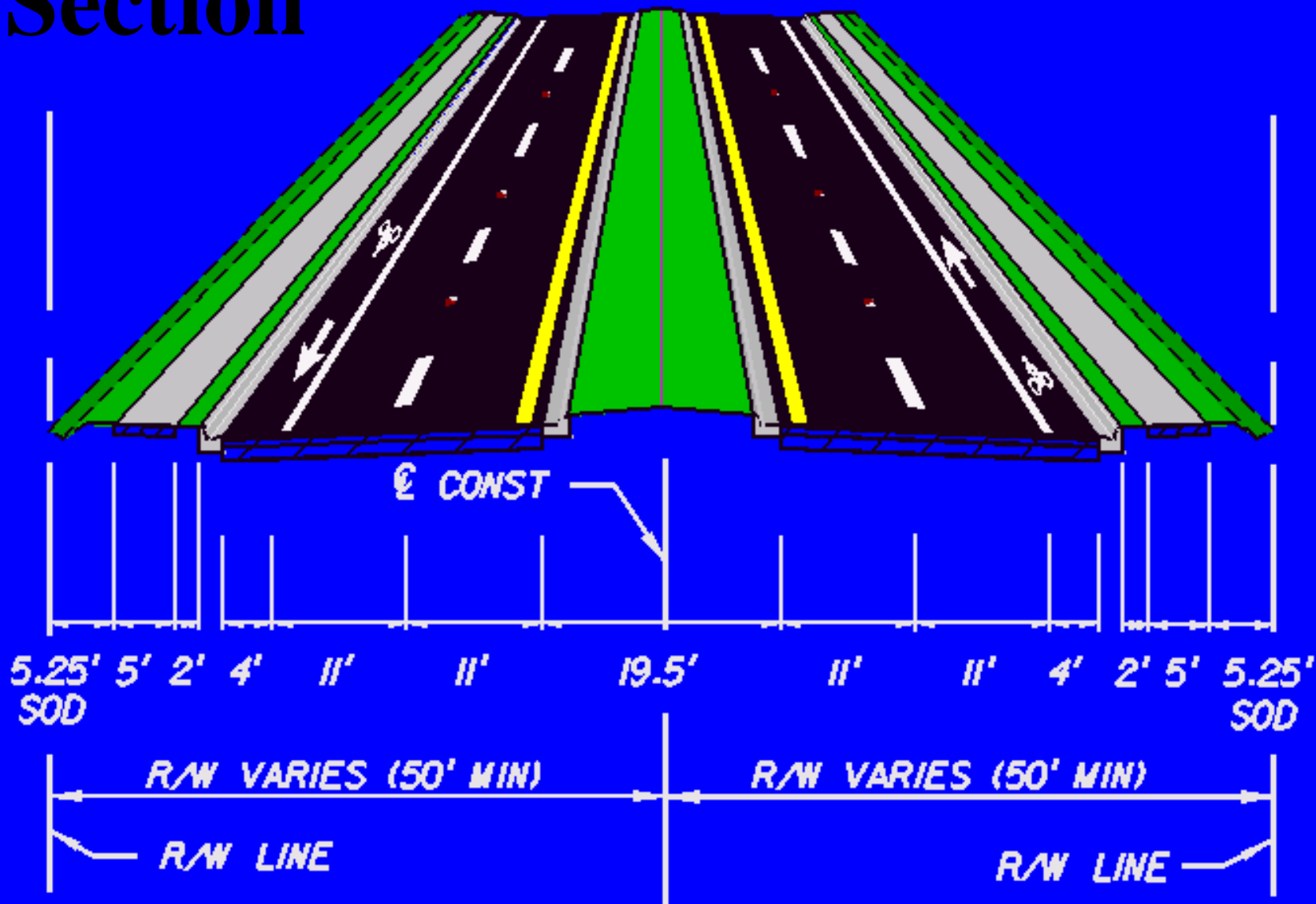
AADT = Average Annual Daily Traffic

LOS = Level Of Service (A to F in decreasing quality)



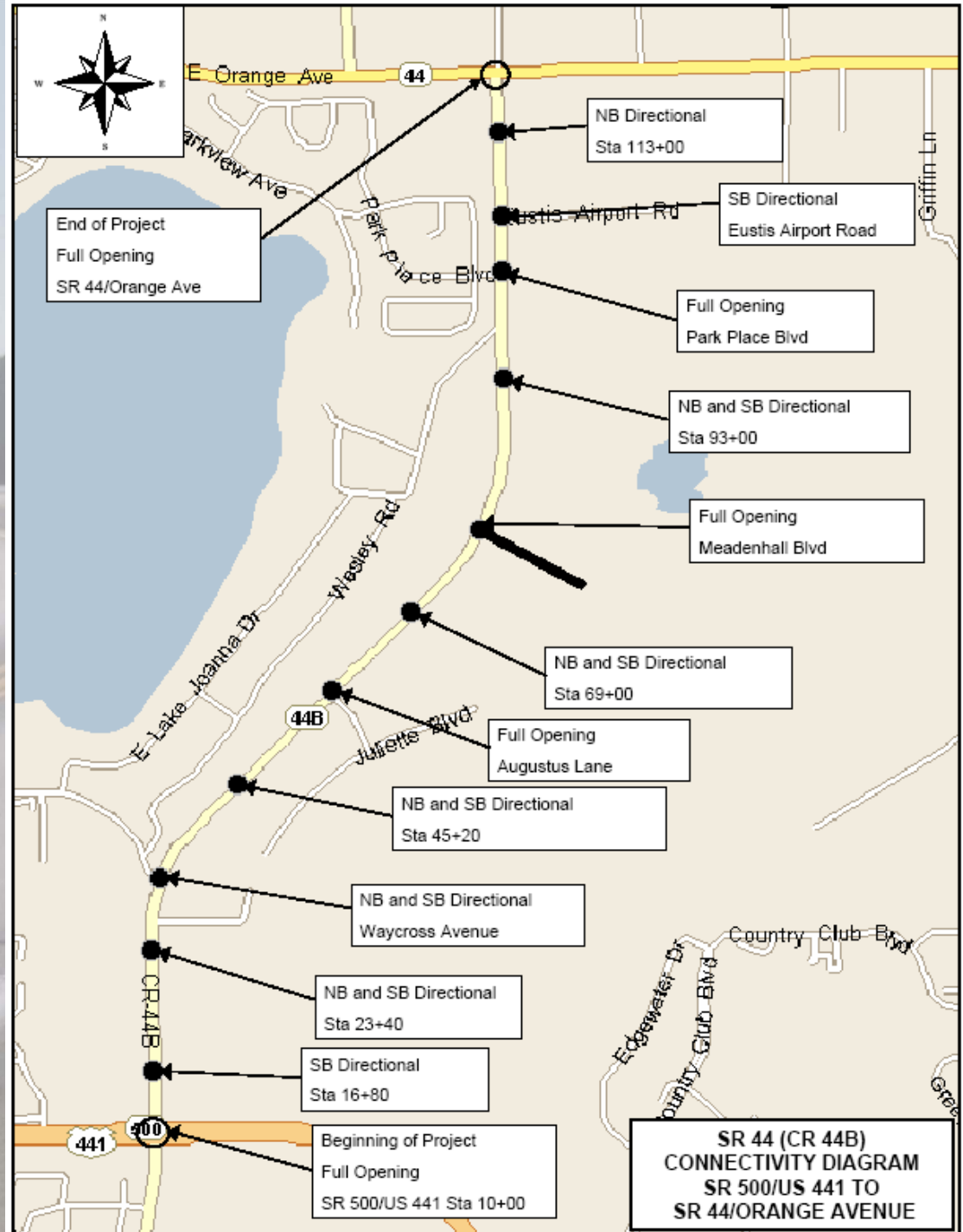
Typical Section

S.R. 44



Access Management

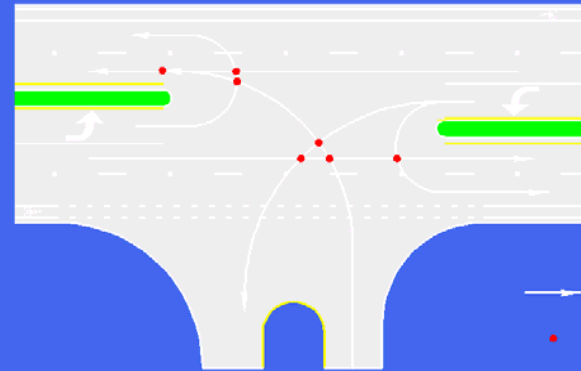
- Current conditions provide full access in all directions.
- Proposed improvements limit access but increase safety



Median Openings



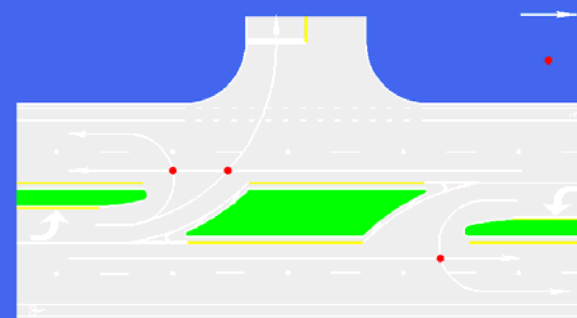
Median Opening Types



→ Vehicle Movement
• Conflict Point

Full Opening

All movements are allowed: lefts into side street, lefts out of side street, and U-turns.
Full median opening has 7 major conflict points, and must be spaced no less than 1320' apart.

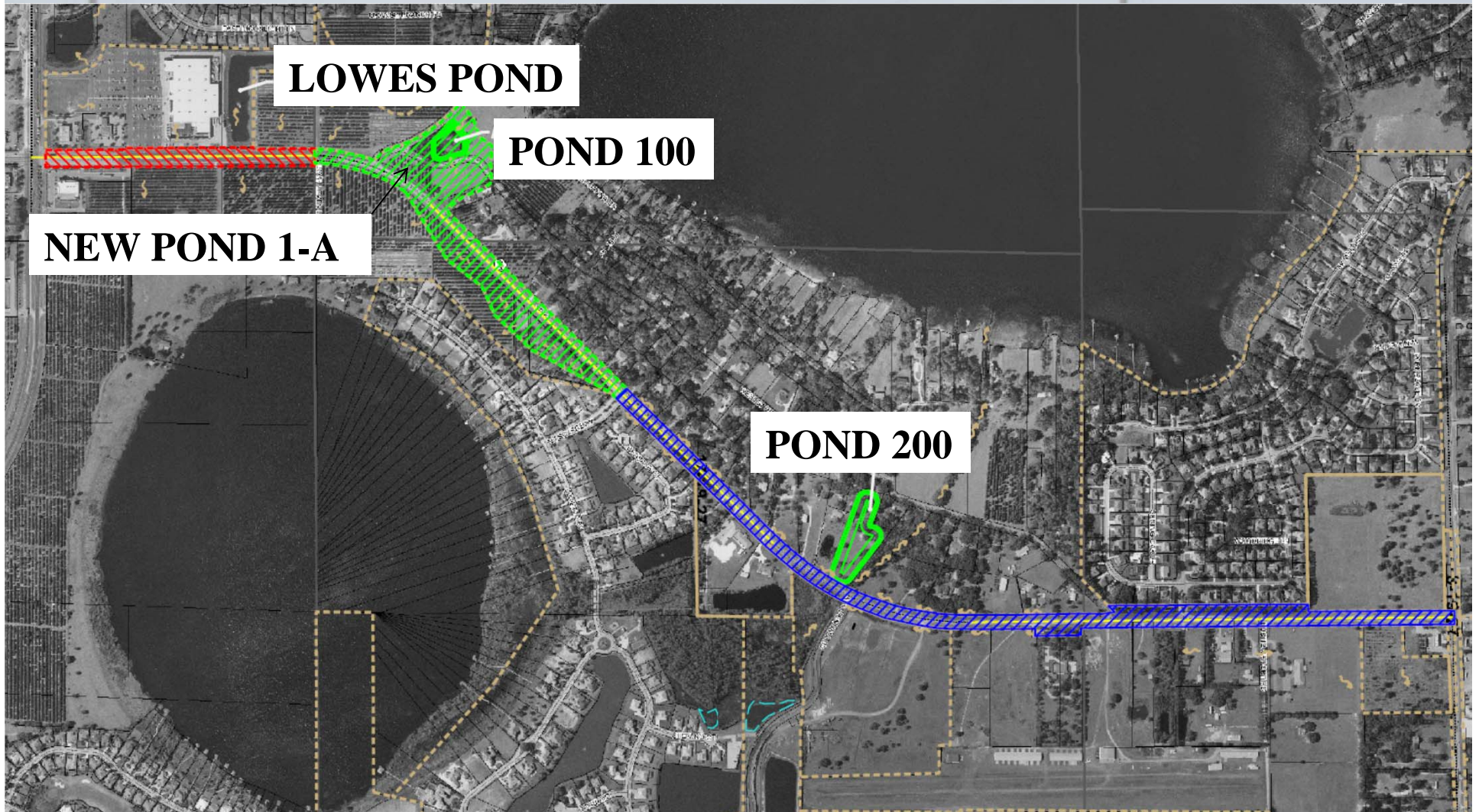


→ Vehicle Movement
• Conflict Point

Directional Opening

Movements are restricted to lefts into side street and U-turns.
Lefts out of side street are not permitted.
Directional median opening has 3 major conflict points, and must be spaced no less than 660' apart.

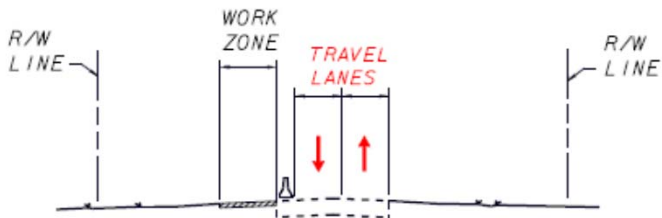
Drainage Design



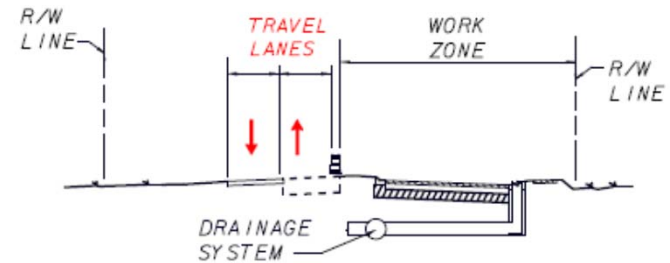
- 3 Basin Areas
- Improved Quality of Lakes
- 4 Ponds (Pond 100 Reduced, New Pond 1-A)

Traffic Control Plan

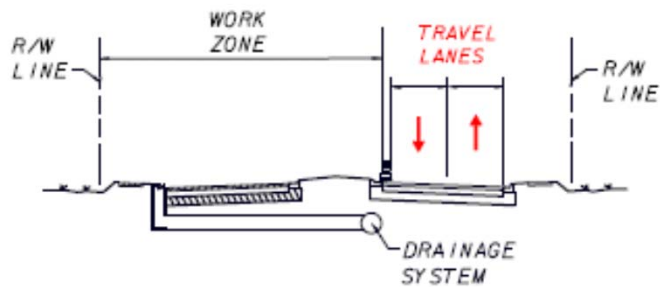
Existing traffic flow uninterrupted



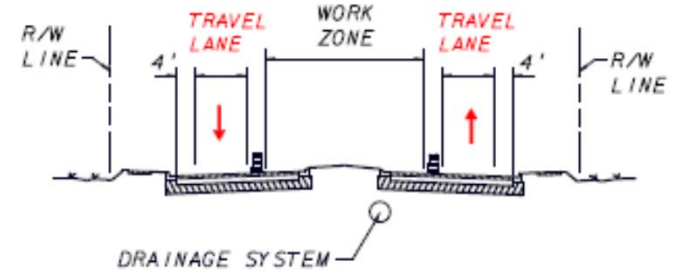
PHASE 1
CONSTRUCT TEMPORARY PAVEMENT



PHASE 2
CONSTRUCT NORTHBOUND LANES



PHASE 3
CONSTRUCT SOUTHBOUND LANES



PHASE 4
FINALIZE MEDIAN

Project Schedule & Cost

- **Spring of 2015: Design Phase** scheduled to be completed
- **Right-of-Way cost: Estimated at \$2.9 Million**
Mostly for drainage ponds
- **Construction cost: Estimated at \$22 Million**
Not funded at this time



Thank You

- **Contact Representatives:**

- **Colleen Jarrell, PE**

- FDOT Project Manager**

- District 5**

- (386) 943-5386**

- Colleen.Jarrell@dot.state.fl.us**

- **Bruno Fiori, PE**

- Design Engineer Of Record**

- AECOM Technical Services, Inc.**

- (813) 630-2500**

- Bruno.Fiori@aecom.com**

