

### PLANT LIST:

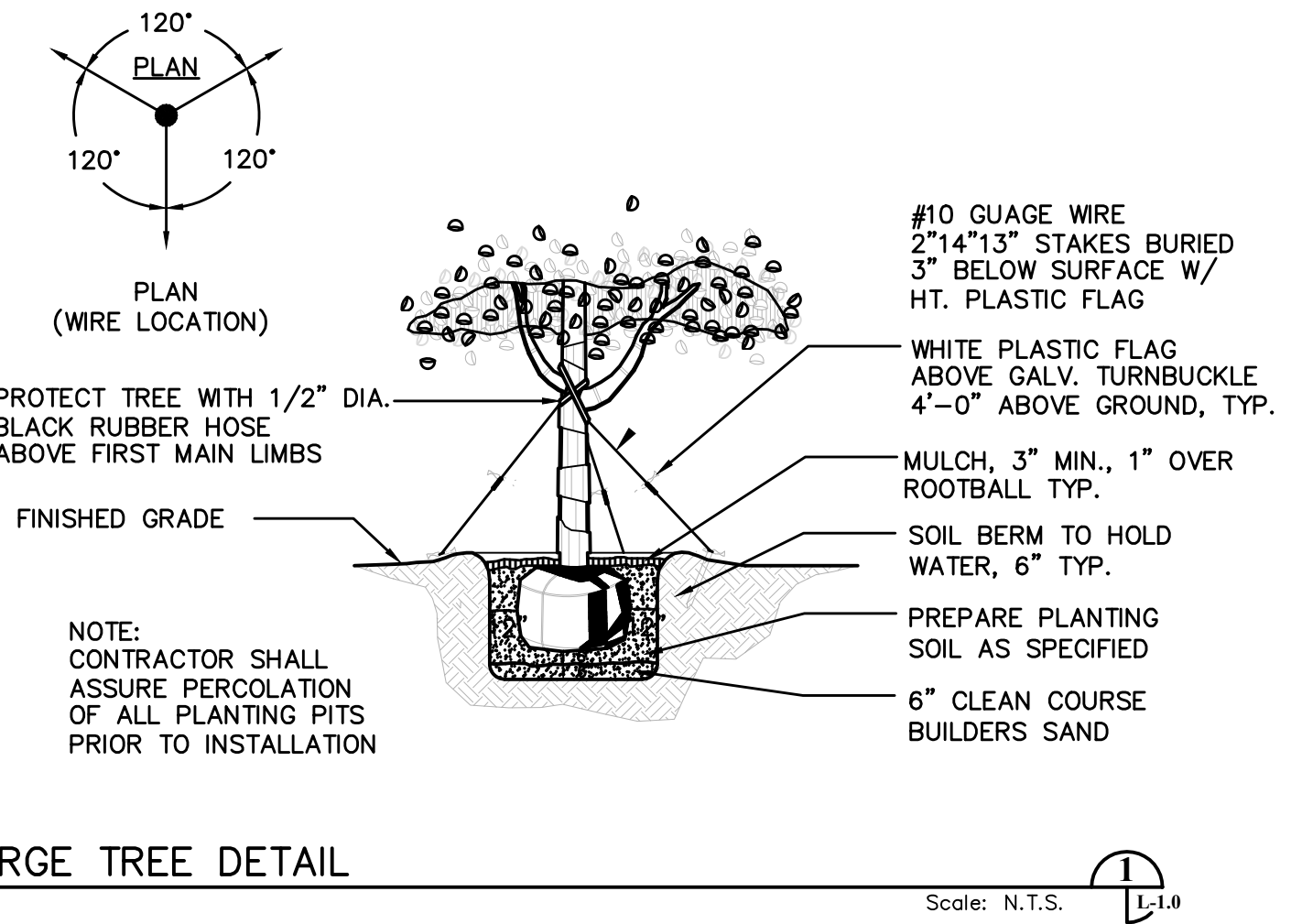
QTY.	ABBREV.	BOTANICAL NAME	COMMON NAME	SIZE & SPECIFICATION
<b>TREES &amp; PALMS</b>				
3	AR	Acer rubrum	Red Maple	65 Gal., 3 1/2" Cal.
4	LI	Lagerstroemia indica 'Muskogee'	Lavender Crape Myrtle	65 Gal., 3 1/2" Cal., Multi-trunk
16	MG	Magnolia grandiflora 'D.D. Blanchard'	Magnolia 'D.D. Blanchard'	65 Gal., 3 1/2" Cal.
5	QV	Quercus virginiana	Live Oak	65 Gal., 3 1/2" Cal.
3	TD	Taxodium distichum	Bald Cypress	65 Gal., 3 1/2" Cal.
3	SP	Sabal palmetto	Sabal Palms	10' Min. Ht., Booted Trunks, Straight
<b>SHRUBS, VINES &amp; GROUND COVER</b>				
290	IF	Illicium floridanum	Florida Anise	36" Min. Ht., 3 Gal. 36" O.C.
131	IV	Ilex vomitoria 'Schillings Dwarf'	Dwarf Yaupon Holly	24" Min. Ht., 3 Gal. 24" O.C.
46	MC	Muhlenbergia capillaris	Muhly Grass	24" Min. Ht., 3 Gal. 30" O.C.
<b>SOD &amp; MISCELLANEOUS ITEMS</b>				
SOD	Paspalum notatum	Bahia Solid Sod	SOLID SOD	
MULCH	Shredded Melaleuca Mulch			

### IRRIGATION NOTES:

1. All landscaped areas shall be irrigated with a permanent automatic irrigation system providing 100% coverage.
2. An automatic moisture sensor/shutoff shall be part of the system.
3. All tree, shrub, and groundcover material proposed for this site is medium to low water use. Micro or drip irrigation will be installed in these beds.

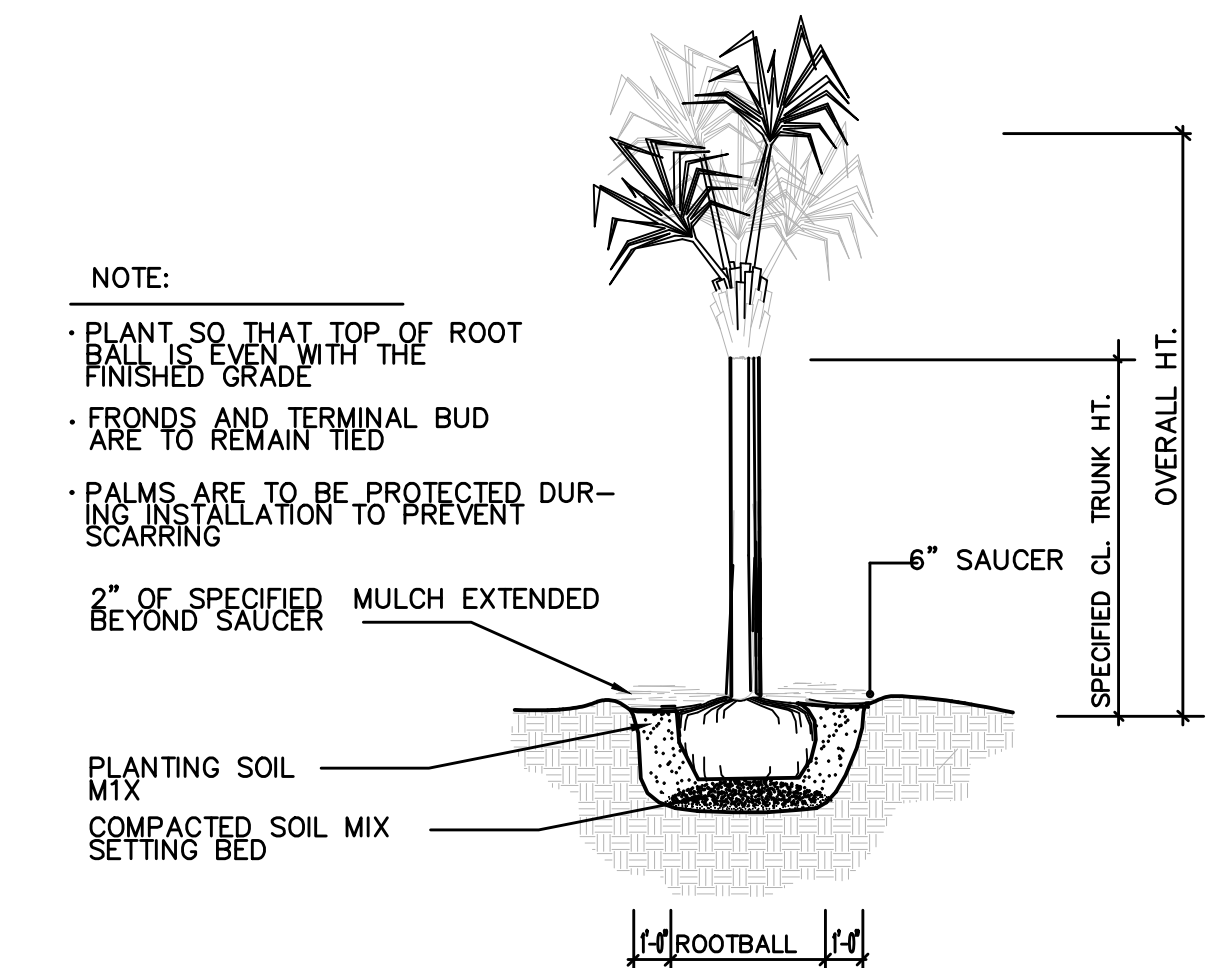
### LANDSCAPE NOTES:

1. All plant material shall be Florida Grade No. 1 or better as specified in "Grades and Standards for Nursery Plants", "Parts 1 and 2, by Division of Plant Industry, Florida", Department of Agriculture and Consumer Services, and shall conform to current American Association of Nurserymen 'Standards for Nursery Stock', latest edition.
2. The landscape contractor shall be responsible for verification of quantities the plant list. In the event of a conflict between quantities on the plant list and the plans, the plans shall control and the discrepancy shall be brought to the attention of the landscape architect prior to bid. Any deviation from these plans must be approved by the Landscape Architect or owner's representative.
3. Contractor is responsible for compliance with all applicable building codes, ordinances and local regulations. The contractor shall be responsible for obtaining all necessary permits to perform the work.
4. The landscape contractor is responsible for inspection of existing conditions and promptly reporting all discrepancies and improper conditions (wetness, muck, debris, etc) to the Landscape Architect prior to bidding. Contractor is responsible for soil analysis prior to installation of plantings, and is responsible for all soil amendments to conform to specifications.
5. All tree material shall be container grown unless otherwise specified.
6. The landscape contractor shall acquaint himself with all civil drawings as they relate to paving, site grading, and all utilities, (including water, sewer and electrical supply) to preclude any misunderstanding and ensure trouble free installation. The exact location of all existing structures, underground utilities, existing underground sprinklers and pipe may not be indicated on drawings. The contractor shall conduct his work in a manner to prevent interruption or damage to existing systems which must remain operational. The contractor shall protect utility services which must remain operational and shall be responsible for their replacement if damaged by him.
7. Mulch shall be organic and shall not be placed on top of the root ball or placed against the trunk. Mulch shall be applied a minimum of 12" to 18" from the trunk of any sized tree. Materials such as rock and shells that do not biodegrade, are not deemed acceptable. Failure to install mulch (and type of mulch) as provided in the specification above may result in a failed inspection. See <http://hort.ifas.ufl.edu/woody/over-mulching.html> for more information.
8. Refer to specifications for complete requirements.
9. In the event of a conflict between quantities on the plant list and the plans, the plan shall take precedent.



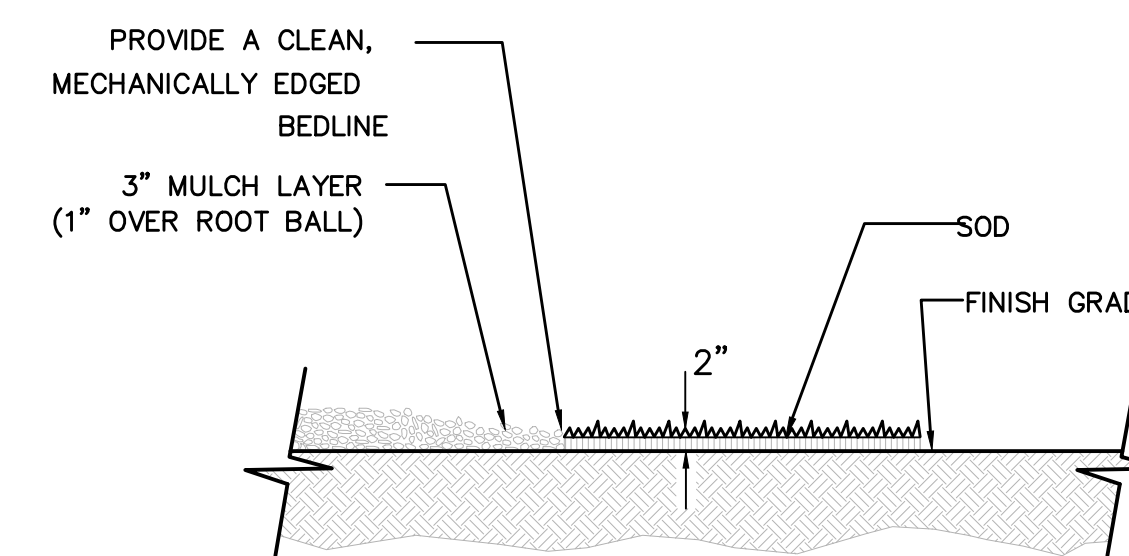
LARGE TREE DETAIL

Scale: N.T.S.



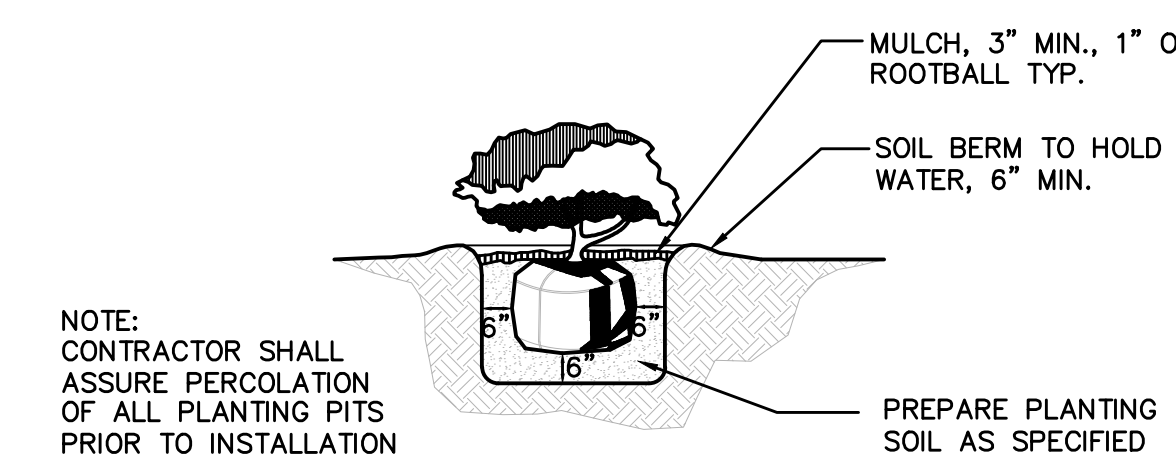
PALM PLANTING DETAIL

Scale: N.T.S.



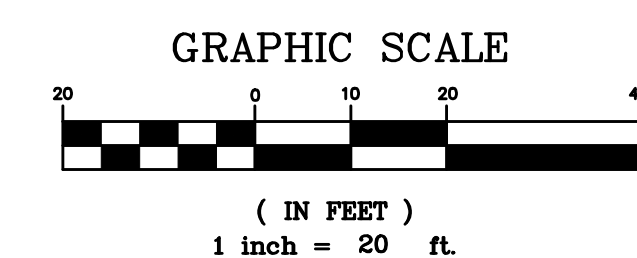
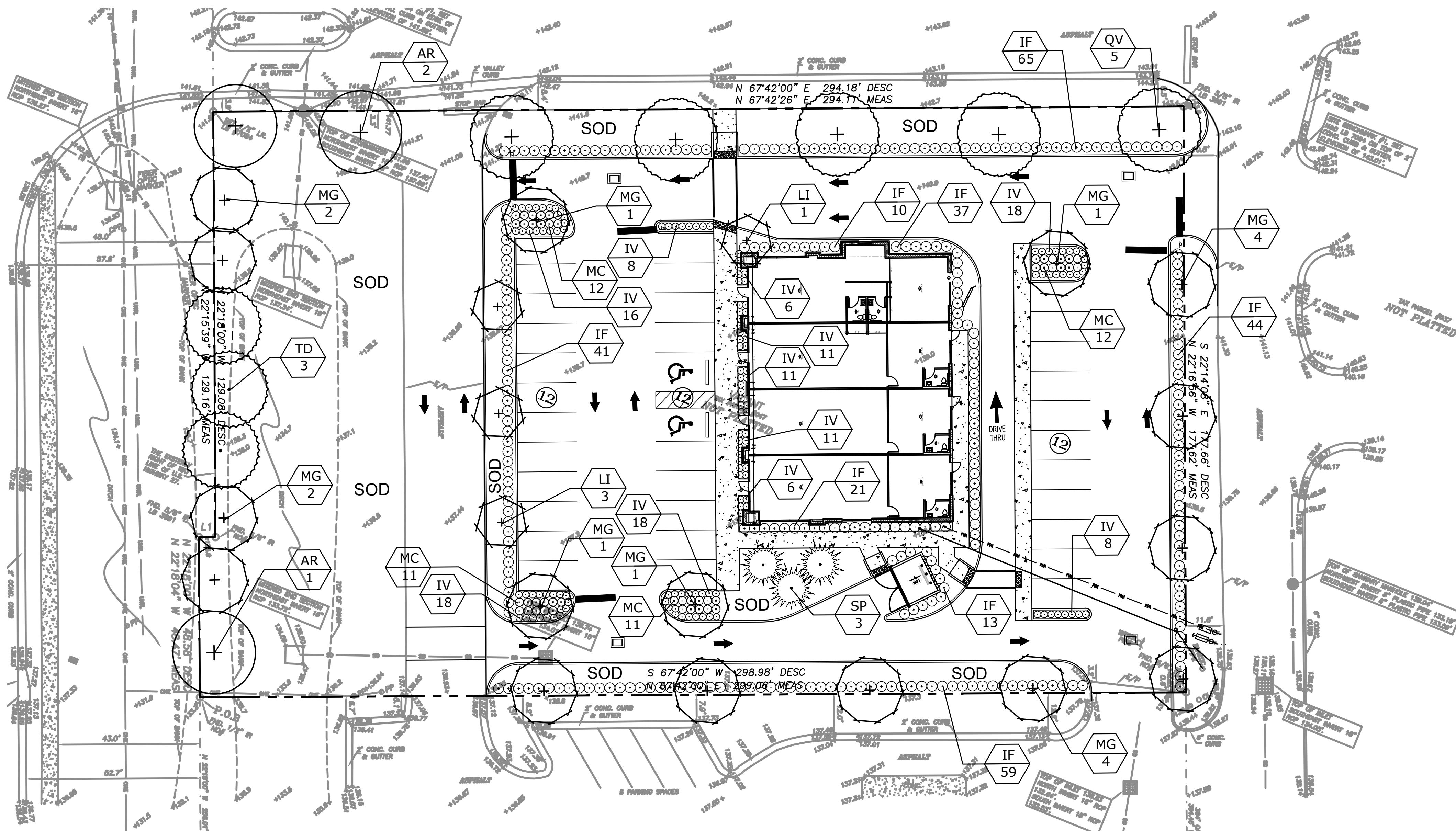
SOD PLACEMENT ADJ. TO MULCH

Scale: N.T.S.



SHRUB DETAIL

Scale: N.T.S.



**KIWAN PLAZA  
LANDSCAPE PLAN  
US HWY 27, CLERMONT**

NO.	DATE	REVISION / ISSUE DATE

RCE CONSULTANTS, LLC  
617 ARVERN DRIVE  
ALTAMONTE SPRINGS, FL 32701  
PHONE NO. 407-452-8633  
LARRY@RCECONSULTANTS.NET

Landscape Architect of Record  
DocuSigned by:  
CHRISTOPHER KENNEDY  
RCE CONSULTANTS, LLC  
Certificate of Authorization 29307

PROJECT #:  
13-2022  
DRAWN/LMP CHECKED: LMP  
DATE: APRIL 2022 SHEET:  
SCALE: 1"=20'  
LANDSCAPE PLAN