

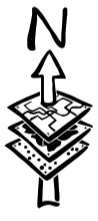
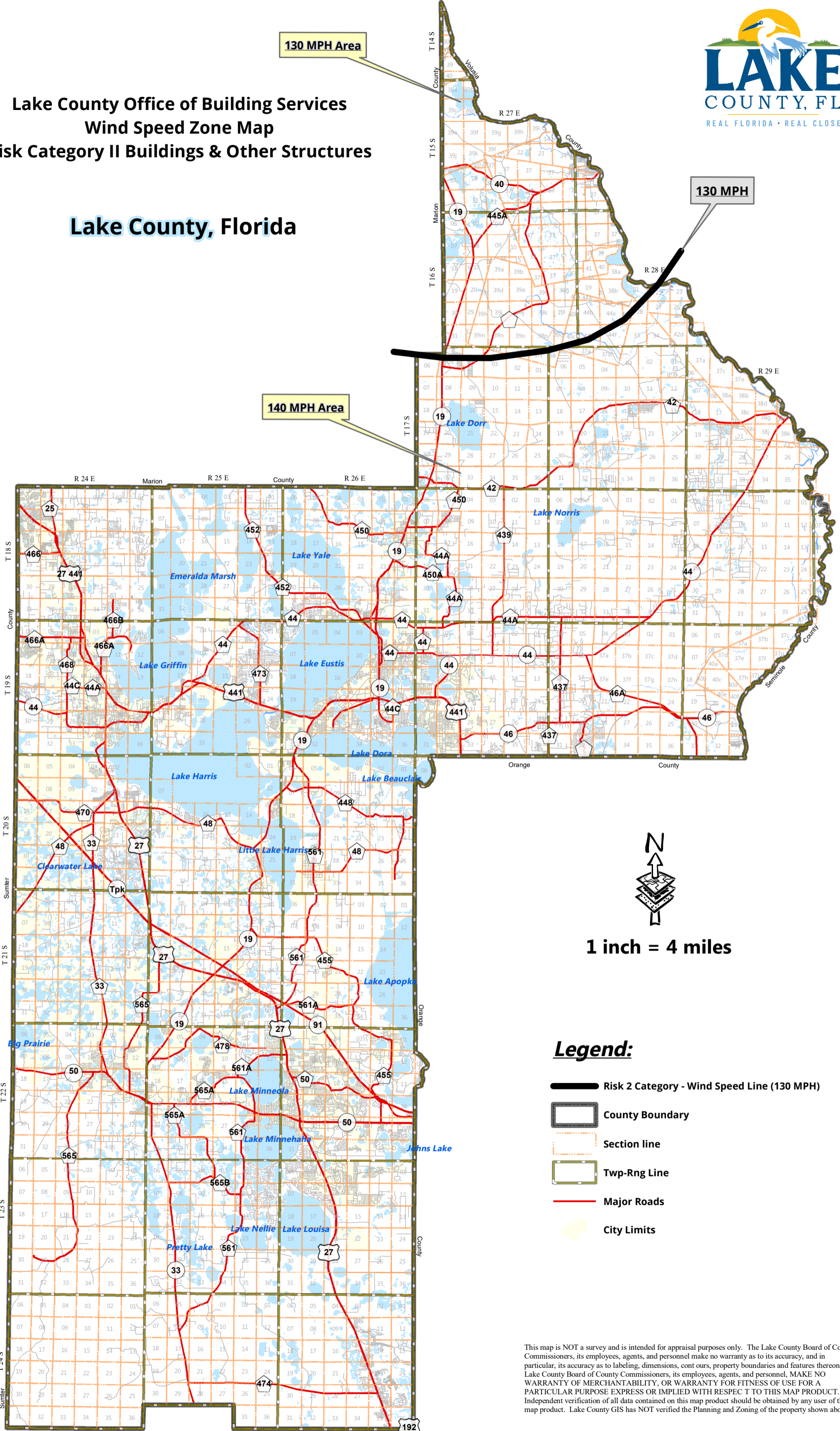
130 MPH Area

130 MPH

140 MPH Area




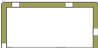


Lake County Office of Building Services
Wind Speed Zone Map
Risk Category II Buildings & Other Structures

Lake County, Florida



1 inch = 4 miles

Legend:

-  Risk 2 Category - Wind Speed Line (130 MPH)
-  County Boundary
-  Section line
-  Twp-Rng Line
-  Major Roads
-  City Limits

This map is NOT a survey and is intended for appraisal purposes only. The Lake County Board of County Commissioners, its employees, agents, and personnel make no warranty as to its accuracy, and in particular, its accuracy as to labeling, dimensions, contours, property boundaries and features thereon. The Lake County Board of County Commissioners, its employees, agents, and personnel, MAKE NO WARRANTY OF MERCHANTABILITY, OR WARRANTY FOR FITNESS OF USE FOR A PARTICULAR PURPOSE EXPRESS OR IMPLIED WITH RESPECT TO THIS MAP PRODUCT. Independent verification of all data contained on this map product should be obtained by any user of this map product. Lake County GIS has NOT verified the Planning and Zoning of the property shown above.