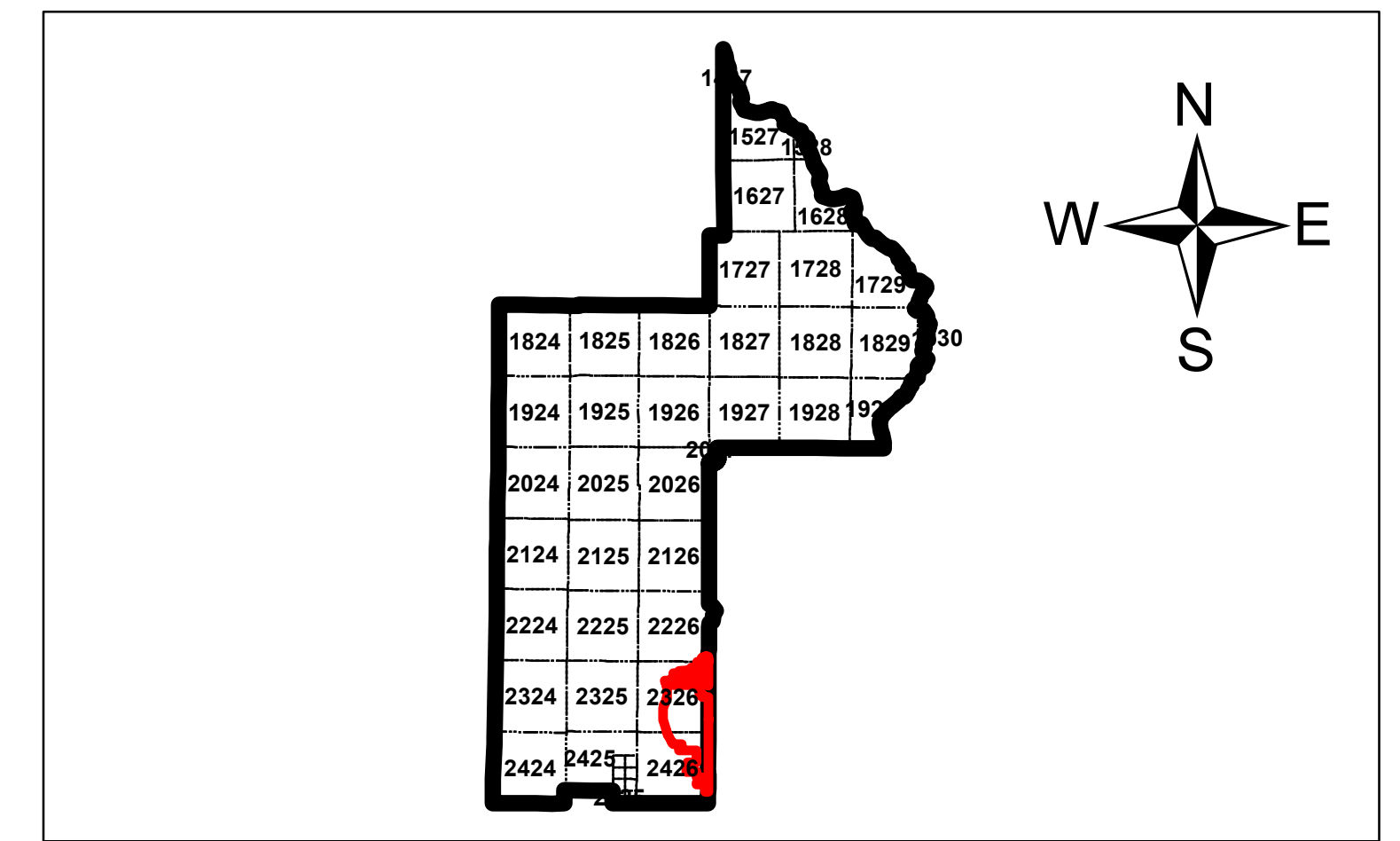





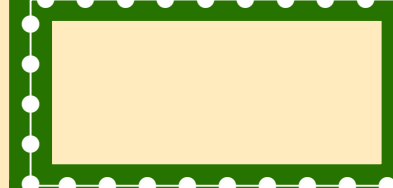



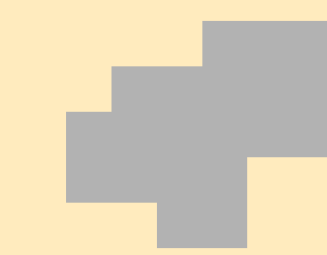
South Lake Sector Planning Area

WETLANDS (Wetlands Classification Map)



Wetland Classification

-  Forested Wetland
-  Herbaceous Wetland
-  Shrub Wetland
-  Standing Water
-  Uplands
-  Green Swamp Area
-  SL Sector Planning Area



Municipality



Lakes

Data Sources:
 Lake County GIS Department;
 1998 wetland designation
 St. Johns River Water Management;
 Data compilation compliments of
 Lake County Growth Management Department
 Planning and Community Design.

This map product was prepared from a Geographic Information System established by the Lake County Board of County Commissioners. Its employees, agents and personnel, make no warranty as to its accuracy, and in particular its accuracy as to labeling, dimensions, contours, property boundaries, or placement or location of any map features thereon. The Lake County Board Of County Commissioners, its employees, agents and personnel MAKE NO WARRANTY OF MERCHANTABILITY OR WARRANTY FOR FITNESS OF USE FOR A PARTICULAR PURPOSE EXPRESS OR IMPLIED WITH RESPECT TO THIS MAP PRODUCT. Independent verification of all data contained on this map product should be obtained by any user of this map.



LAKE COUNTY
 BOARD OF COUNTY COMMISSIONERS

