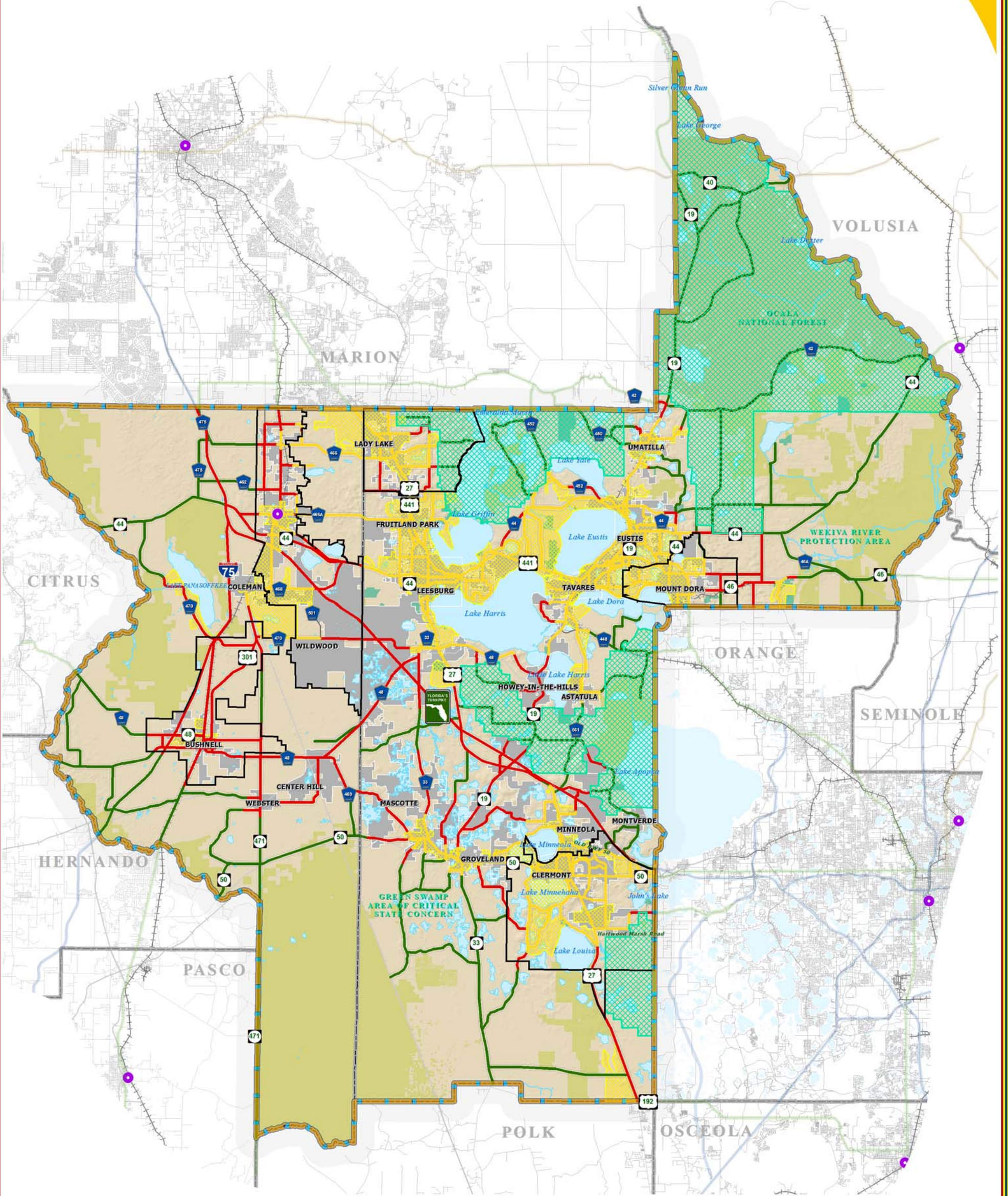


URBAN, TRANSITIONING AND RURAL AREAS MAP



LEGEND

- Water Body
- Municipal Area
- County Delineation
- Lake-Sumter MPO Boundary
- Amtrak Station
- Active Railroad
- Abandoned Railroad

- Public Lands Managed by Federal Agency
- Public Lands Managed by State Agency
- Public Lands Managed by Local Agency

THEME LEGEND:

LSMPO Adopted Functional Classification

- Transitioning Segments
- all URBAN Type Roads
- all RURAL Type Roads

NOTE:
Urban is more than 1,000 people per square mile;
Rural is less than 500 people per square mile;
Transitioning is between those thresholds,
reasonably anticipated to urbanize within
a 20-year planning horizon.

- Rural Protection Area
- Census 2000 Urbanized Areas Within LSMPO
- Adopted ISB or JPA

NOTE:
The corridors displayed on this map, as adopted by the Lake-Sumter MPO, are so designated for planning purposes as for the efficient management of the transportation network.



TRANSPORTATION PLANNING AREA SUMTER AND LAKE COUNTY, FLORIDA



DATA SOURCES:
Lake and Sumter County GIS Department, Planning Office
Public Lands Florida Managed Areas (FLSMA)
Florida Statewide Area Inventory (FSWAI) Data
Data Collection and Map production completed as of the
Lake-Sumter Metropolitan Planning Organization

This map product was prepared from a GIS database for the
System established by the Lake-Sumter Metropolitan Planning Organization and
Lake County Board of County Commissioners.
Its employees, agents and consultants shall not be held responsible for any
and no part of its content including, but not limited to, errors, omissions,
property boundaries, or placement in violation of any applicable laws.
The Lake-Sumter Metropolitan Planning Organization and
Lake County Board of County Commissioners, its employees, agents and
consultants make no warranty of MERCHANTABILITY or FITNESS FOR
PARTICULAR USE FOR ANY PURPOSES, AND IN NO EVENT SHALL THEY BE
HELD RESPONSIBLE TO THIS MAP PRODUCT. Independent verification of all data
contained on this map should be obtained from the original data source of the data.

MAP ADOPTION:
SEPTEMBER 23, 2009
MAP COMPOSITION:
SEPTEMBER 23, 2009

\\Lakesumter\mopo\GIS\Transitioning_Adopted\Sept23rd2009_FunctionalClassificationCorridors_LSMPO_11x17.mxd - 9/25/2009 @ 4:48:25 PM