

# COMPREHENSIVE PLAN 2030

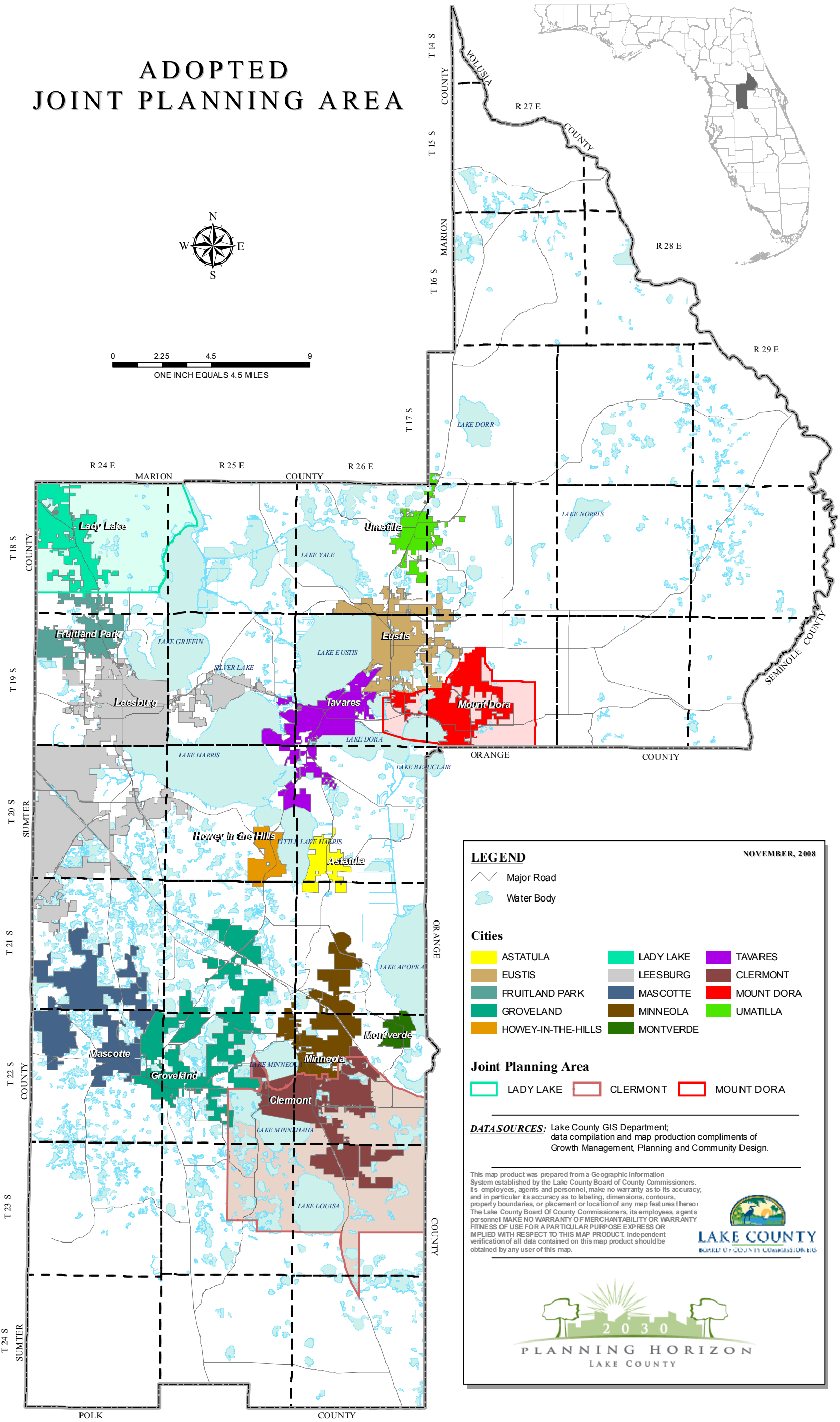
## LAKE COUNTY FLORIDA

FUTURE LAND USE SERIES

### ADOPTED JOINT PLANNING AREA



0 2.25 4.5 9  
ONE INCH EQUALS 4.5 MILES



#### LEGEND

NOVEMBER, 2008

- Major Road
- Water Body

#### Cities

- |                    |           |            |
|--------------------|-----------|------------|
| ASTATULA           | LADY LAKE | TAVARES    |
| EUSTIS             | LEESBURG  | CLERMONT   |
| FRUITLAND PARK     | MASCOTTE  | MOUNT DORA |
| GROVELAND          | MINNEOLA  | UMATILLA   |
| HOWEY-IN-THE-HILLS | MONTVERDE |            |

#### Joint Planning Area

- |           |          |            |
|-----------|----------|------------|
| LADY LAKE | CLERMONT | MOUNT DORA |
|-----------|----------|------------|

**DATASOURCES:** Lake County GIS Department; data compilation and map production compliments of Growth Management, Planning and Community Design.

This map product was prepared from a Geographic Information System established by the Lake County Board of County Commissioners. Its employees, agents and personnel, make no warranty as to its accuracy, and in particular its accuracy as to labeling, dimensions, contours, property boundaries, or placement or location of any map features thereon. The Lake County Board Of County Commissioners, its employees, agents personnel MAKE NO WARRANTY OF MERCHANTABILITY OR WARRANTY FITNESS OF USE FOR A PARTICULAR PURPOSE EXPRESS OR IMPLIED WITH RESPECT TO THIS MAP PRODUCT. Independent verification of all data contained on this map product should be obtained by any user of this map.



**LAKE COUNTY**  
BOARD OF COUNTY COMMISSIONERS

