

Legend

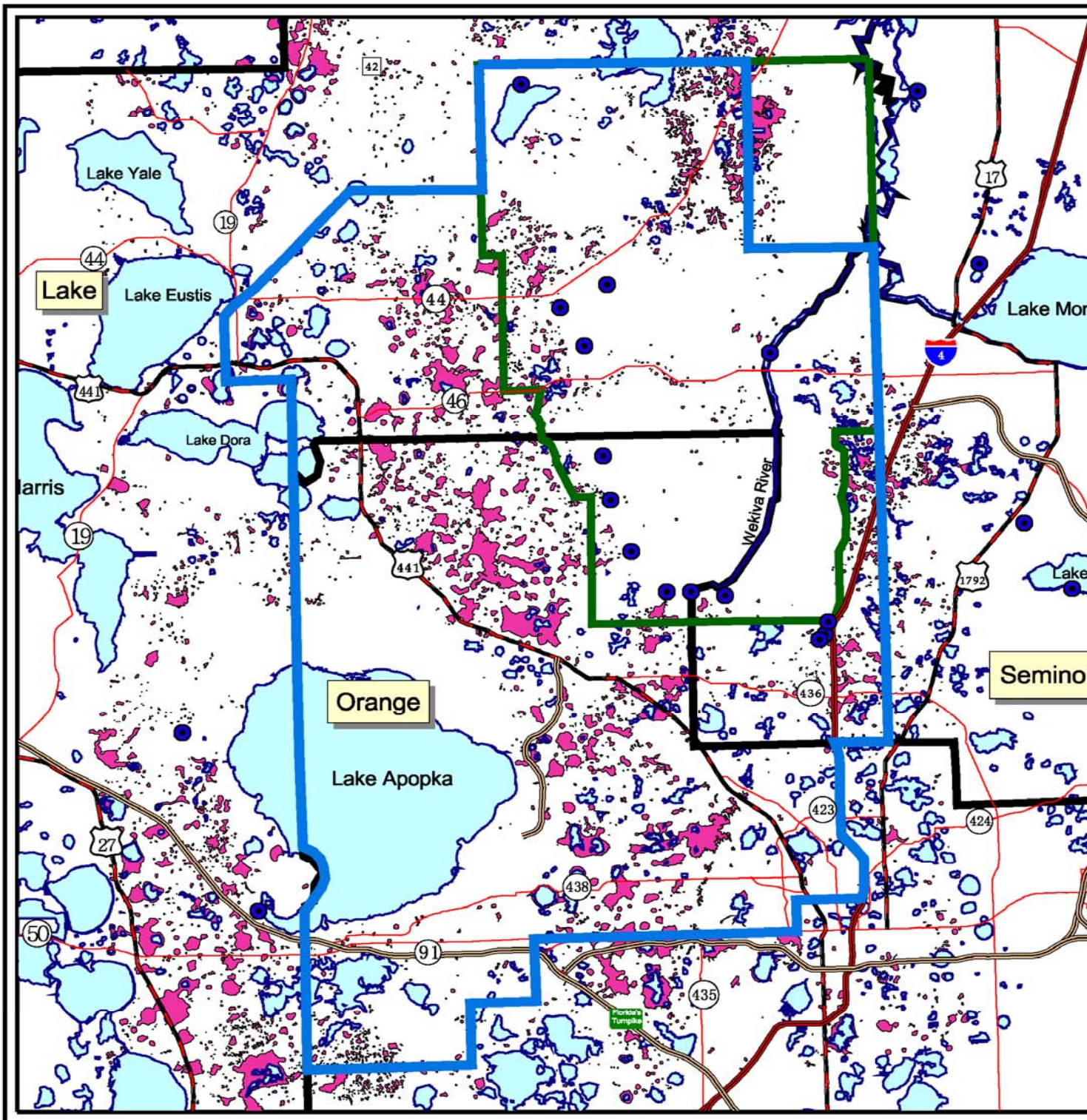
- Seminole County Municipalities
 - Altamonte Springs
 - Lake Mary
 - Longwood
- Orange Co. Municipalities
 - Apopka
 - Eatonville
 - Maitland
 - Oakland
 - Ocoee
 - Orlando
 - Winter Garden
- Lake County Municipalities
 - Eustis
 - Mount Dora
- Wekiva Study Area
- Springs
- Wekiva River Protection Area
- Most Effective Recharge Areas
(Type "A" Hydrologic Soil Group)



January 31, 2005

**Wekiva Study Area
Most Effective
Recharge Areas**

Prepared for
WRBCC by Fla.
Dept. Community
Affairs/Div. of
Community
Planning



Legend

-  Wekiva Study Area
-  Springs
-  Wekiva River Protection Area
-  Karst Features



1 0 1 2 3 4 Miles



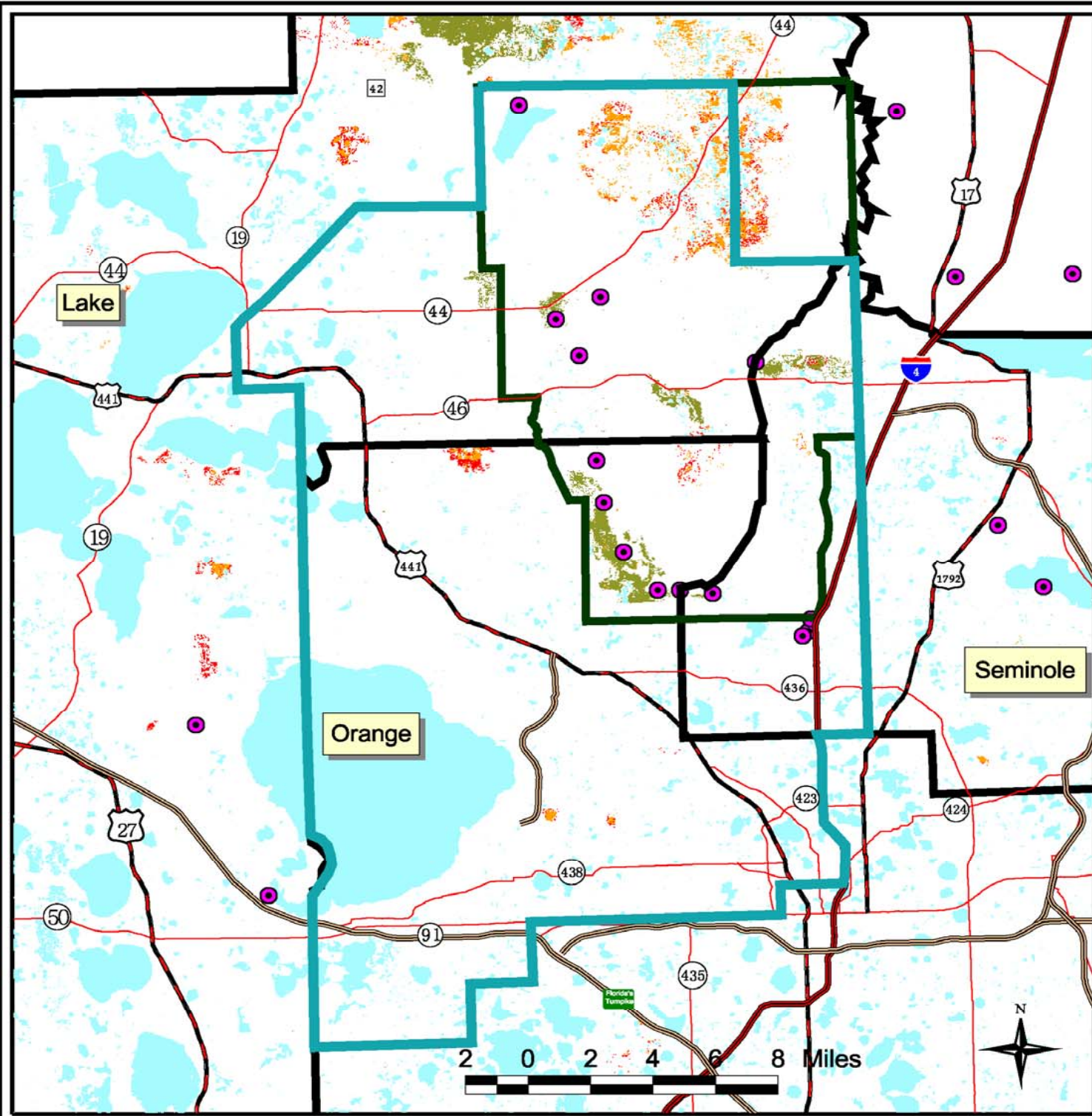
August 11, 2004

WEKIVA STUDY AREA

Karst Features



Prepared for
WRBCC by Fla.
Dept. Community
Affairs/Div. of
Community
Planning



Legend


- Wekiva River Protection Area
- Wekiva Study Area
- Springs

Land Cover 2003 (FWCC)

- Xeric Oak Scrub
- Sand Pine Scrub
- Sandhill
- Open Water
- No Data

**WEKIVA STUDY AREA
SPRINGS & FWCC
LANDCOVER 2003**

August 11, 2004



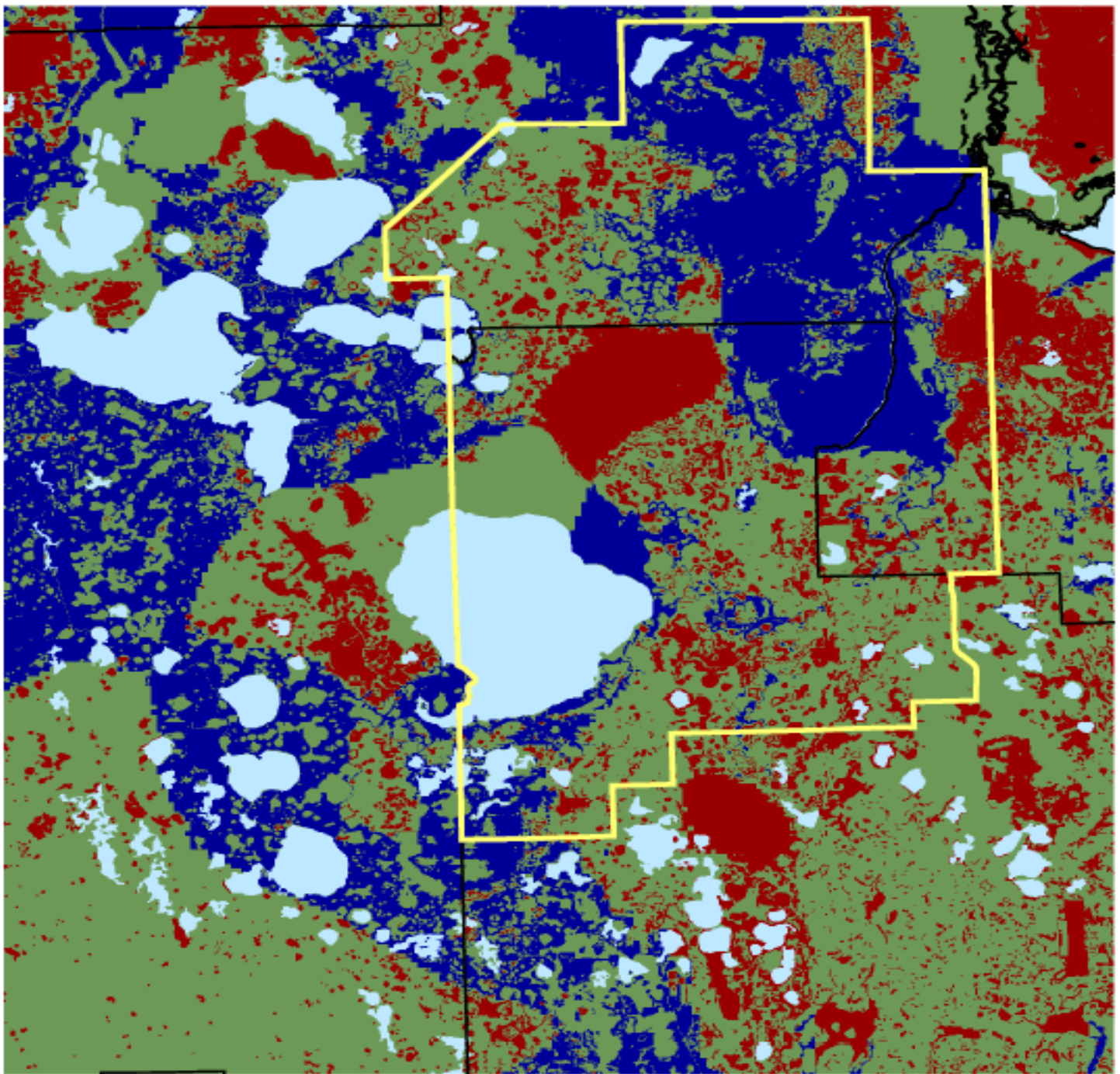
FLORIDA DEPARTMENT OF
Community Affairs

DCA




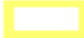

DCP

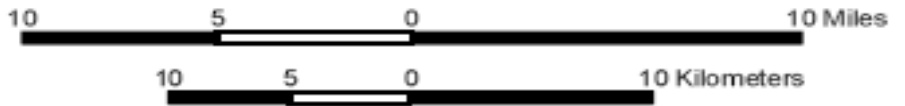
GIS

Wekiva Study Area – Relative Aquifer Vulnerability



Relative Vulnerability

-  More Vulnerable
-  Vulnerable
-  Less Vulnerable
-  Wekiva Study Area
-  Water Features



**Relative Vulnerability of the Floridan Aquifer System predicted by WAVA
(Florida Geological Survey, Report of Investigation 104, p.23)**