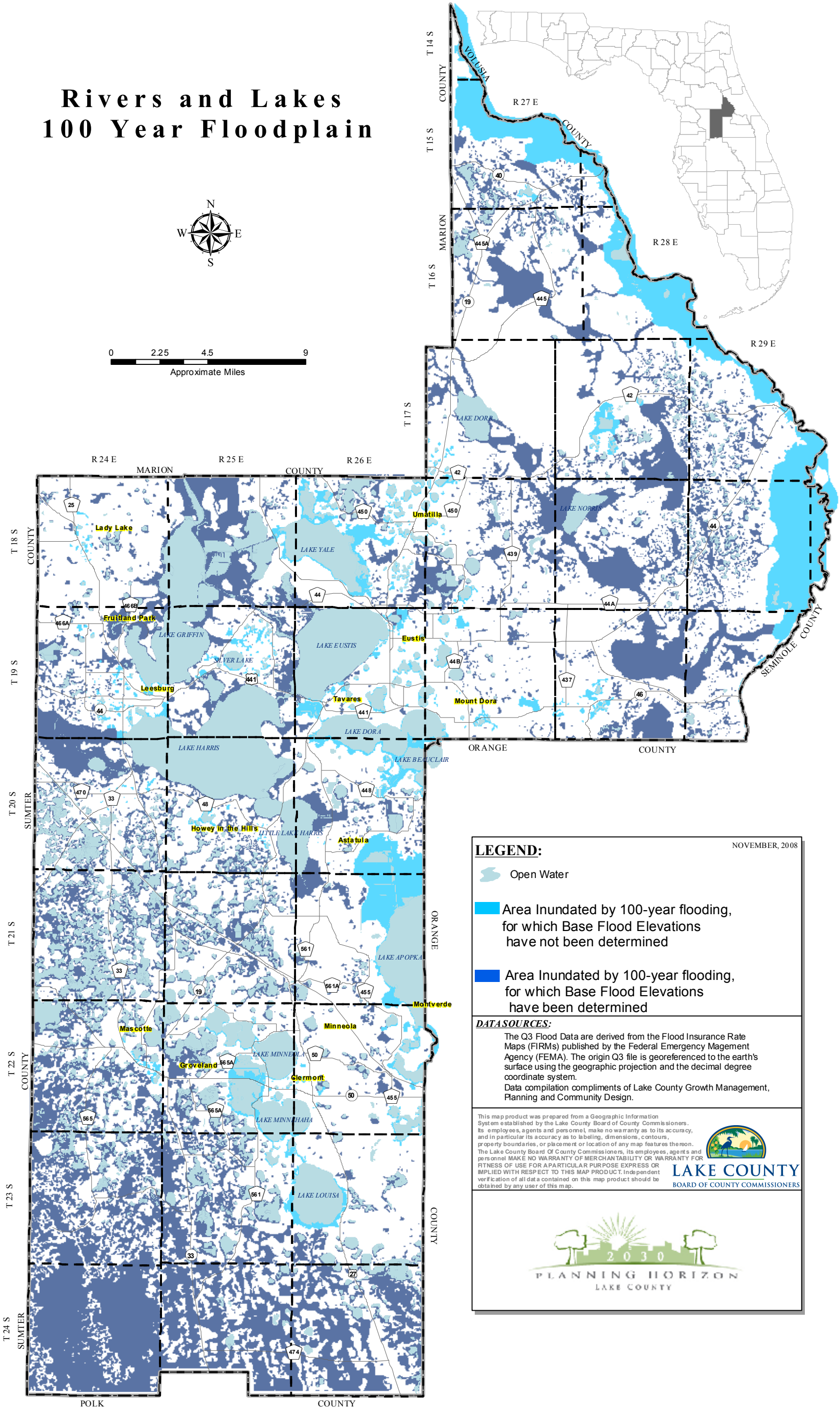
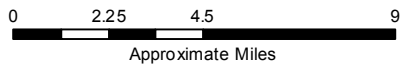





# COMPREHENSIVE PLAN 2030

## LAKE COUNTY FLORIDA

### Rivers and Lakes 100 Year Floodplain



**LEGEND:** NOVEMBER, 2008

-  Open Water
-  Area Inundated by 100-year flooding, for which Base Flood Elevations have not been determined
-  Area Inundated by 100-year flooding, for which Base Flood Elevations have been determined

**DATA SOURCES:**  
 The Q3 Flood Data are derived from the Flood Insurance Rate Maps (FIRMs) published by the Federal Emergency Management Agency (FEMA). The origin Q3 file is georeferenced to the earth's surface using the geographic projection and the decimal degree coordinate system.  
 Data compilation compliments of Lake County Growth Management, Planning and Community Design.

This map product was prepared from a Geographic Information System established by the Lake County Board of County Commissioners. Its employees, agents and personnel, make no warranty as to its accuracy, and in particular its accuracy as to labeling, dimensions, contours, property boundaries, or placement or location of any map features thereon.  
 The Lake County Board Of County Commissioners, its employees, agents and personnel MAKE NO WARRANTY OF MERCHANTABILITY OR WARRANTY FOR FITNESS OF USE FOR A PARTICULAR PURPOSE EXPRESS OR IMPLIED WITH RESPECT TO THIS MAP PRODUCT. Independent verification of all data contained on this map product should be obtained by any user of this map.

