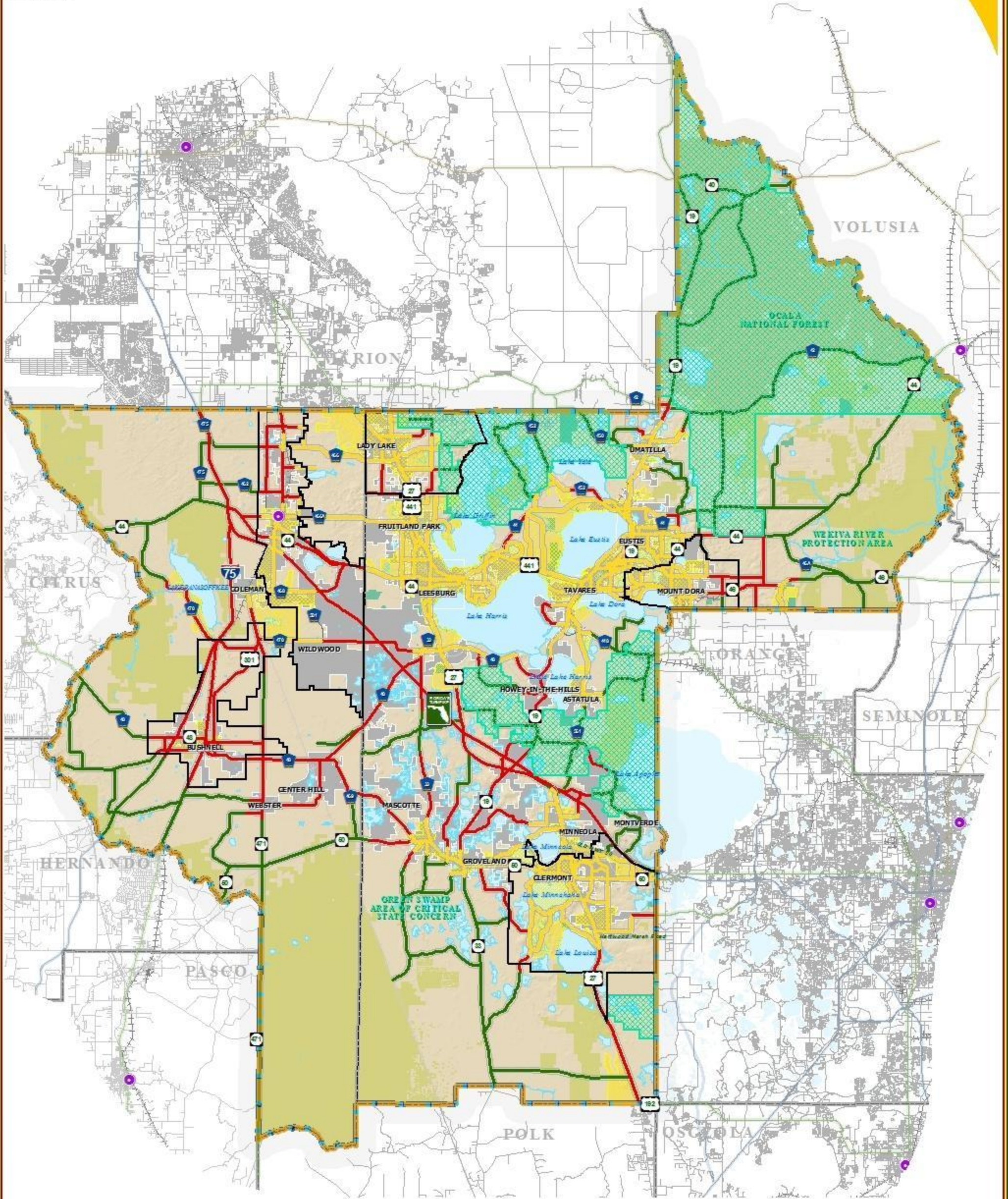


# URBAN, TRANSITIONING AND RURAL AREAS MAP



**LEGEND**

- Water Body
- Municipal Area
- County Delineation
- Lake-Sumter MPO Boundary
- Amtrak Station
- Active Railroad
- Abandoned Railroad

- Public Lands Managed by Federal Agency
- Public Lands Managed by State Agency
- Public Lands Managed by Local Agency

**THEME LEGEND:**

- LSMPO Adopted Functional Classification**
- Transitioning Segments
  - all URBAN Type Roads
  - all RURAL Type Roads

**NOTE:**  
Urban is more than 1,000 people per square mile;  
Rural is less than 500 people per square mile;  
Transitioning is between those thresholds,  
reasonably anticipated to urbanize within  
a 20-year planning horizon.

- Rural Protection Area
- Census 2000 Urbanized Areas Within LSMPO
- Adopted ISB or JPA

**NOTE:**  
The corridors displayed on this map, as adopted by the Lake-Sumter MPO, are so designated for planning purposes as for the efficient management of the transportation network.



## TRANSPORTATION PLANNING AREA SUMTER AND LAKE COUNTY, FLORIDA



**DATA SOURCES:**  
GIS data provided by the Florida Department of Transportation (FDOT) and the Florida Department of Transportation (FDOT) for the Lake-Sumter Metropolitan Planning Organization (LSMPO) area. The data was collected from the Florida Department of Transportation (FDOT) and the Florida Department of Transportation (FDOT) for the Lake-Sumter Metropolitan Planning Organization (LSMPO) area. The data was collected from the Florida Department of Transportation (FDOT) and the Florida Department of Transportation (FDOT) for the Lake-Sumter Metropolitan Planning Organization (LSMPO) area.

U:\Lake-Sumter\mop\GIS\Transportation\A\map\lake\_sumter\lake\_sumter.mxd - 4/19/2010 10:48:15:35 PM

MAP ADOPTED:  
SEPTEMBER 14, 2007  
MAP COMPLETED:  
SEPTEMBER 14, 2007