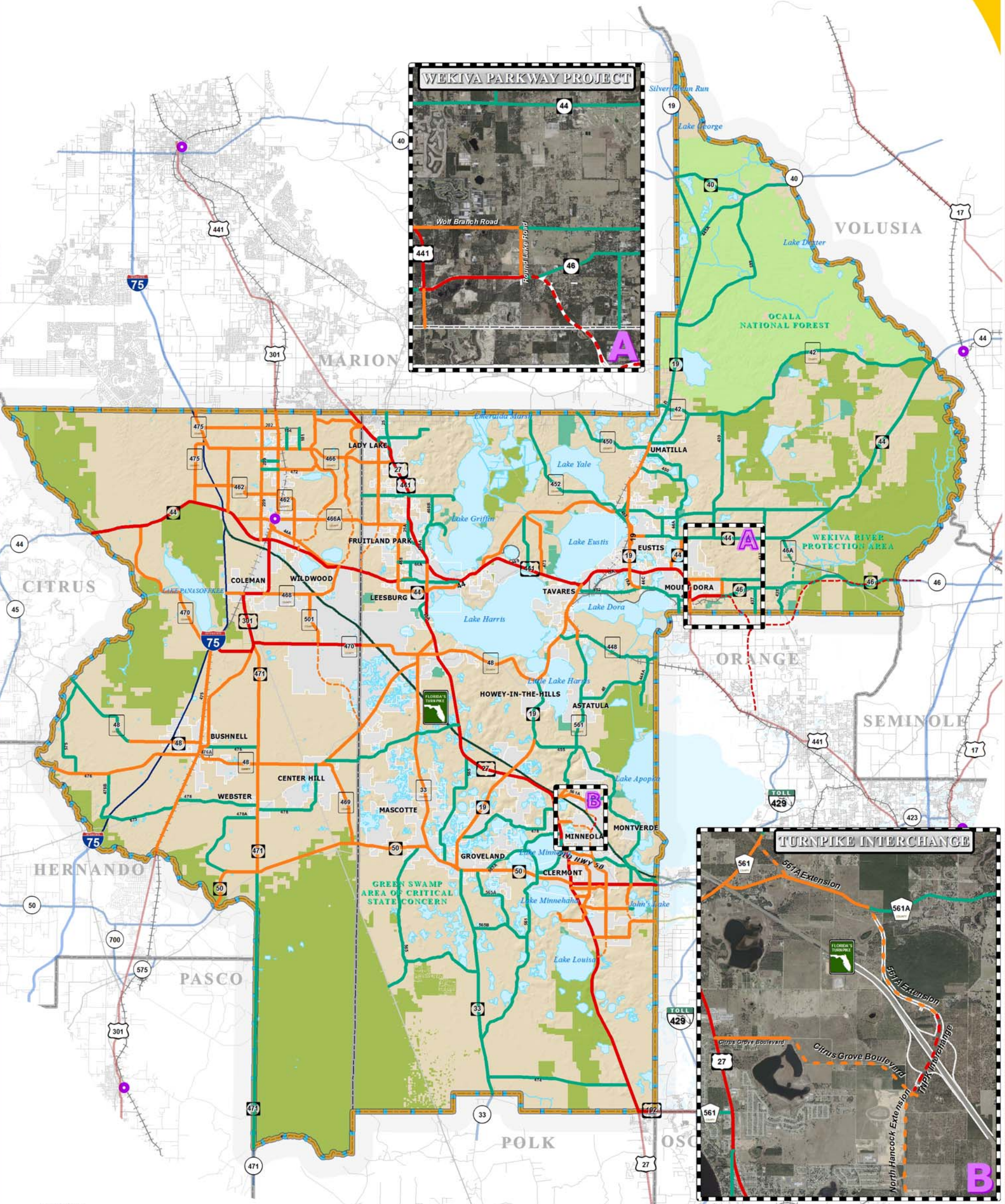


ADOPTED MAXIMUM LANE CONSTRAINED CORRIDORS



LEGEND

- Water Body
- Municipal Area
- County Delineation
- Lake-Sumter MPO Boundary
- Public Lands Managed by Federal Agency
- Public Lands Managed by State Agency
- Public Lands Managed by Local Agency
- Amtrak Station
- Active Railroad
- Abandoned Railroad
- County Road
- State Road
- US Highway
- Interstate
- Turnpike

LakeSumter MPO Adopted Lane Constrained Corridors

- 6 Lanes
- 4 Lanes
- 2 Lanes
- FUTURE 6 Lanes
- FUTURE 4 Lanes
- FUTURE 2 Lanes

The corridors displayed on this map, as adopted by the Lake Sumter MPO, addresses the lane constraints for state and county roads, designated collector status and above. Corridors that are constrained by this policy are so designated in an effort to accomplish one or more of the following:

- To preserve rural character in areas where existing conditions and land use designations do not require the need for additional capacity
- To limit the extent to which corridors will be widened in order to prevent roadways from becoming dividing factors within communities or to prevent widening projects causing the erosion of viable neighborhoods or districts
- To enhance the regional transportation network, spread demand for transportation capacity and maximize access to communities and centers
- To promote the goal of migrating away from capacity improvements through the addition of lanes and to promote the migration toward additional capacity through mass transit improvements along appropriate arterial corridors
- To prevent a misallocation of fiscal resources toward lane-addition projects in which cost-benefit ratios are low in terms of cost versus new capacity

NOTE:
Please observe that these lane constraints apply only to through lanes and do not apply to turn lanes, auxiliary lanes and exclusive-transit lanes.
FOR COMPLETE AND DETAILED LIST OF THE CONSTRAINT CORRIDORS, PLEASE REFER TO POLICY #2009-1 LANE CONSTRAINED CORRIDORS.



TRANSPORTATION PLANNING AREA SUMTER AND LAKE COUNTY, FLORIDA



DATA SOURCES:
Lake and Sumter County GIS Department, Planning Services
Public Lands Florida Managed Areas, FWS, SCA
Florida Statewide Area Inventory (FSAI), DCA, 2005
Data Completion and Map production completed by the Lake-Sumter Metropolitan Planning Organization
The map product was prepared from a GIS project file named "Transportation Planning Corridors" and was produced by the Lake-Sumter Metropolitan Planning Organization. The map product is not intended to be used for legal purposes, and the user should not rely on the map product for legal purposes. The Lake-Sumter Metropolitan Planning Organization and Lake County Florida do not warrant the accuracy, completeness, or reliability of the data used in the map product. The user should verify the accuracy of the data used in the map product. The user should also verify the accuracy of the data used in the map product.

MAP COMPOSITION:
SEPTEMBER, 2009

\\Lakesumterpo\GIS\laneConstrainedCorridors Adopted_Sep23_09.mxd - 9/25/2009 @ 3:23:36 PM