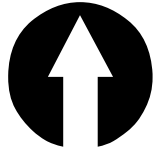


# COMPREHENSIVE PLAN 2030

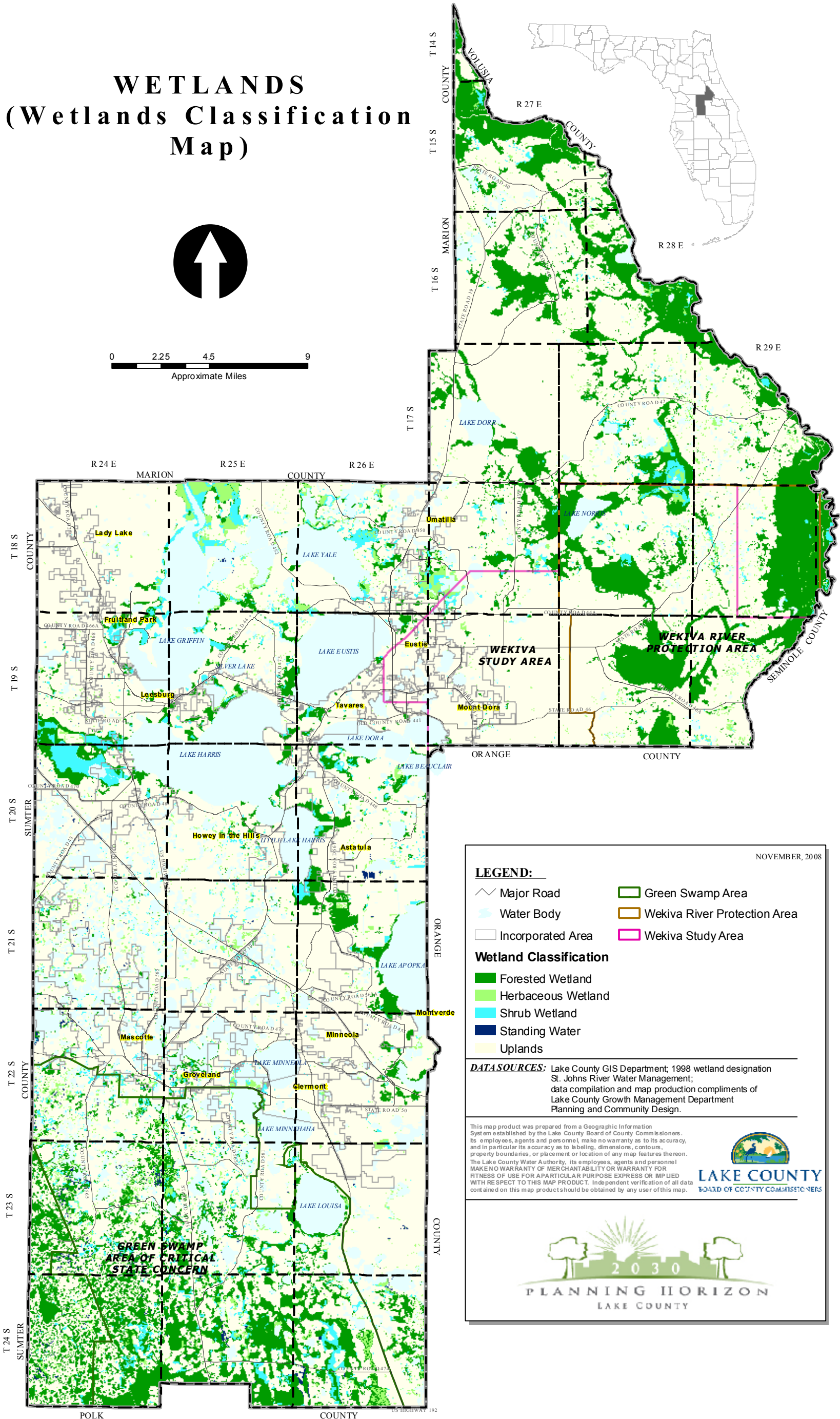
## LAKE COUNTY FLORIDA

FUTURE LAND USE MAP SERIES

### WETLANDS (Wetlands Classification Map)



0 2.25 4.5 9  
Approximate Miles



NOVEMBER, 2008

**LEGEND:**

Major Road	Green Swamp Area
Water Body	Wekiva River Protection Area
Incorporated Area	Wekiva Study Area

**Wetland Classification**

Forested Wetland
Herbaceous Wetland
Shrub Wetland
Standing Water
Uplands

**DATASOURCES:** Lake County GIS Department; 1998 wetland designation  
St. Johns River Water Management;  
data compilation and map production compliments of  
Lake County Growth Management Department  
Planning and Community Design.

This map product was prepared from a Geographic Information System established by the Lake County Board of County Commissioners. Its employees, agents and personnel, make no warranty as to its accuracy, and in particular its accuracy as to labeling, dimensions, contours, property boundaries, or placement or location of any map features thereon. The Lake County Water Authority, its employees, agents and personnel MAKE NO WARRANTY OF MERCHANTABILITY OR WARRANTY FOR FITNESS OF USE FOR A PARTICULAR PURPOSE EXPRESS OR IMPLIED WITH RESPECT TO THIS MAP PRODUCT. Independent verification of all data contained on this map product should be obtained by any user of this map.

**LAKE COUNTY**  
BOARD OF COUNTY COMMISSIONERS

**PLANNING HORIZON**  
LAKE COUNTY