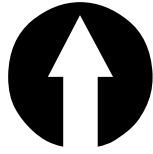


# COMPREHENSIVE PLAN 2030

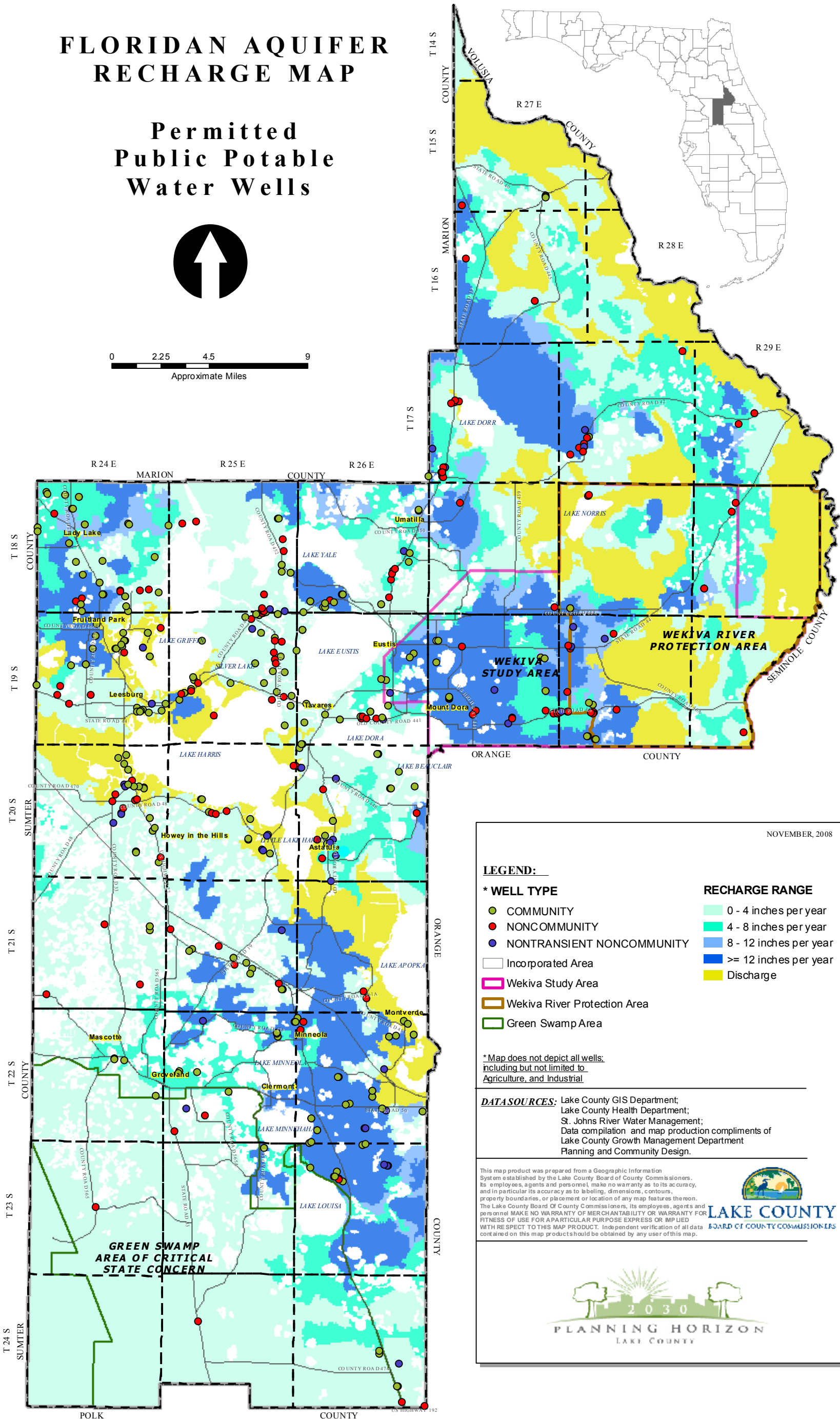
## LAKE COUNTY FLORIDA

### FLORIDAN AQUIFER RECHARGE MAP

#### Permitted Public Potable Water Wells



0 2.25 4.5 9  
Approximate Miles



NOVEMBER, 2008

**LEGEND:**

<b>* WELL TYPE</b>	<b>RECHARGE RANGE</b>
● COMMUNITY	0 - 4 inches per year
● NONCOMMUNITY	4 - 8 inches per year
● NONTRANSIENT NONCOMMUNITY	8 - 12 inches per year
□ Incorporated Area	≥ 12 inches per year
▭ Wekiva Study Area	Discharge
▭ Wekiva River Protection Area	
▭ Green Swamp Area	

*\* Map does not depict all wells, including but not limited to Agriculture, and Industrial*

**DATASOURCES:** Lake County GIS Department; Lake County Health Department; St. Johns River Water Management; Data compilation and map production compliments of Lake County Growth Management Department Planning and Community Design.

This map product was prepared from a Geographic Information System established by the Lake County Board of County Commissioners. Its employees, agents and personnel make no warranty as to its accuracy, and in particular its accuracy as to labeling, dimensions, contours, property boundaries, or placement or location of any map features thereon. The Lake County Board Of County Commissioners, its employees, agents and personnel MAKE NO WARRANTY OF MERCHANTABILITY OR WARRANTY FOR FITNESS OF USE FOR A PARTICULAR PURPOSE EXPRESS OR IMPLIED WITH RESPECT TO THIS MAP PRODUCT. Independent verification of all data contained on this map products should be obtained by any user of this map.

**LAKE COUNTY**  
BOARD OF COUNTY COMMISSIONERS

2030  
PLANNING HORIZON  
LAKE COUNTY

FUTURE LAND USES

G:\Workgroups\Planning\County Maps\Comp\_Plan\FutureLandUseSeries\FLU\_Series\Recharging\Recharging\_Sinks\Recharging\_Sinks\_2025\_11x17.mxd