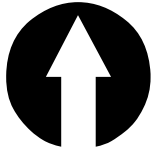


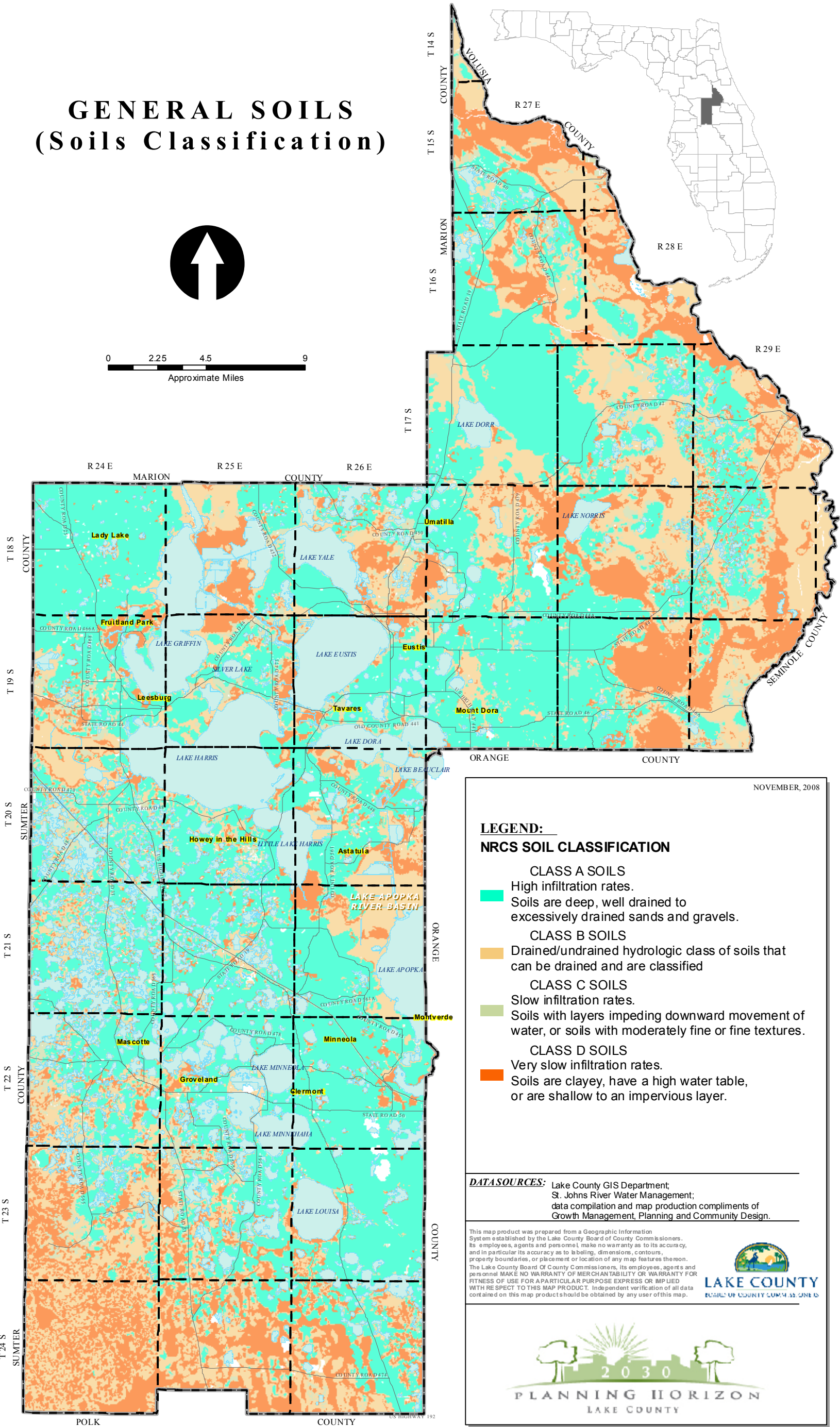
COMPREHENSIVE PLAN 2030

LAKE COUNTY FLORIDA

GENERAL SOILS (Soils Classification)



0 2.25 4.5 9
Approximate Miles



NOVEMBER, 2008

LEGEND:

NRCS SOIL CLASSIFICATION

- CLASS A SOILS**
High infiltration rates.
 Soils are deep, well drained to excessively drained sands and gravels.
- CLASS B SOILS**
 Drained/undrained hydrologic class of soils that can be drained and are classified
- CLASS C SOILS**
Slow infiltration rates.
 Soils with layers impeding downward movement of water, or soils with moderately fine or fine textures.
- CLASS D SOILS**
Very slow infiltration rates.
 Soils are clayey, have a high water table, or are shallow to an impervious layer.

DATASOURCES: Lake County GIS Department;
St. Johns River Water Management;
data compilation and map production compliments of
Growth Management, Planning and Community Design.

This map product was prepared from a Geographic Information System established by the Lake County Board of County Commissioners. Its employees, agents and personnel make no warranty as to its accuracy, and in particular its accuracy as to labeling, dimensions, contours, property boundaries, or placement or location of any map features thereon. The Lake County Board of County Commissioners, its employees, agents and personnel MAKE NO WARRANTY OF MERCHANTABILITY OR WARRANTY FOR FITNESS OF USE FOR A PARTICULAR PURPOSE EXPRESS OR IMPLIED WITH RESPECT TO THIS MAP PRODUCT. Independent verification of all data contained on this map product should be obtained by any user of this map.



FUTURE LAND USES