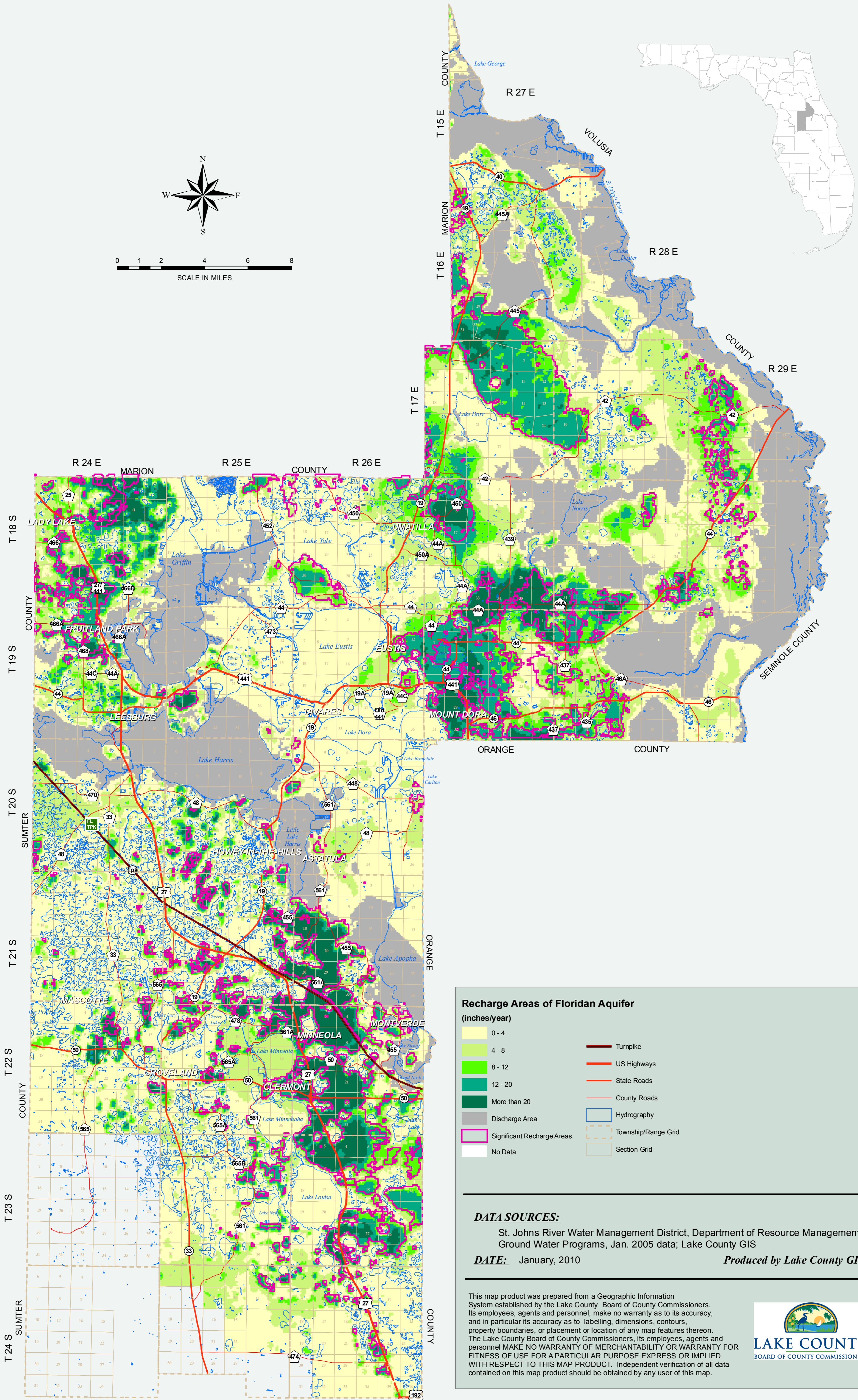
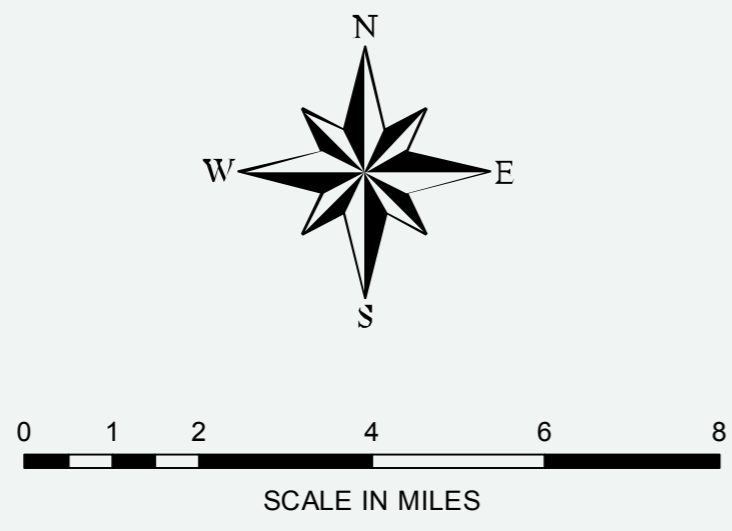


# RECHARGE AREAS OF THE FLORIDAN AQUIFER LAKE COUNTY, FLORIDA



**Recharge Areas of Floridan Aquifer**  
(inches/year)

	0 - 4		Turnpike
	4 - 8		US Highways
	8 - 12		State Roads
	12 - 20		County Roads
	More than 20		Hydrography
	Discharge Area		Township/Range Grid
	Significant Recharge Areas		Section Grid
	No Data		

**DATA SOURCES:**  
St. Johns River Water Management District, Department of Resource Management, Ground Water Programs, Jan. 2005 data; Lake County GIS

**DATE:** January, 2010 **Produced by Lake County GIS**

This map product was prepared from a Geographic Information System established by the Lake County Board of County Commissioners. Its employees, agents and personnel, make no warranty as to its accuracy, and in particular its accuracy as to labeling, dimensions, contours, property boundaries, or placement or location of any map features thereon. The Lake County Board of County Commissioners, its employees, agents and personnel MAKE NO WARRANTY OF MERCHANTABILITY OR WARRANTY FOR FITNESS OF USE FOR A PARTICULAR PURPOSE EXPRESS OR IMPLIED WITH RESPECT TO THIS MAP PRODUCT. Independent verification of all data contained on this map product should be obtained by any user of this map.

