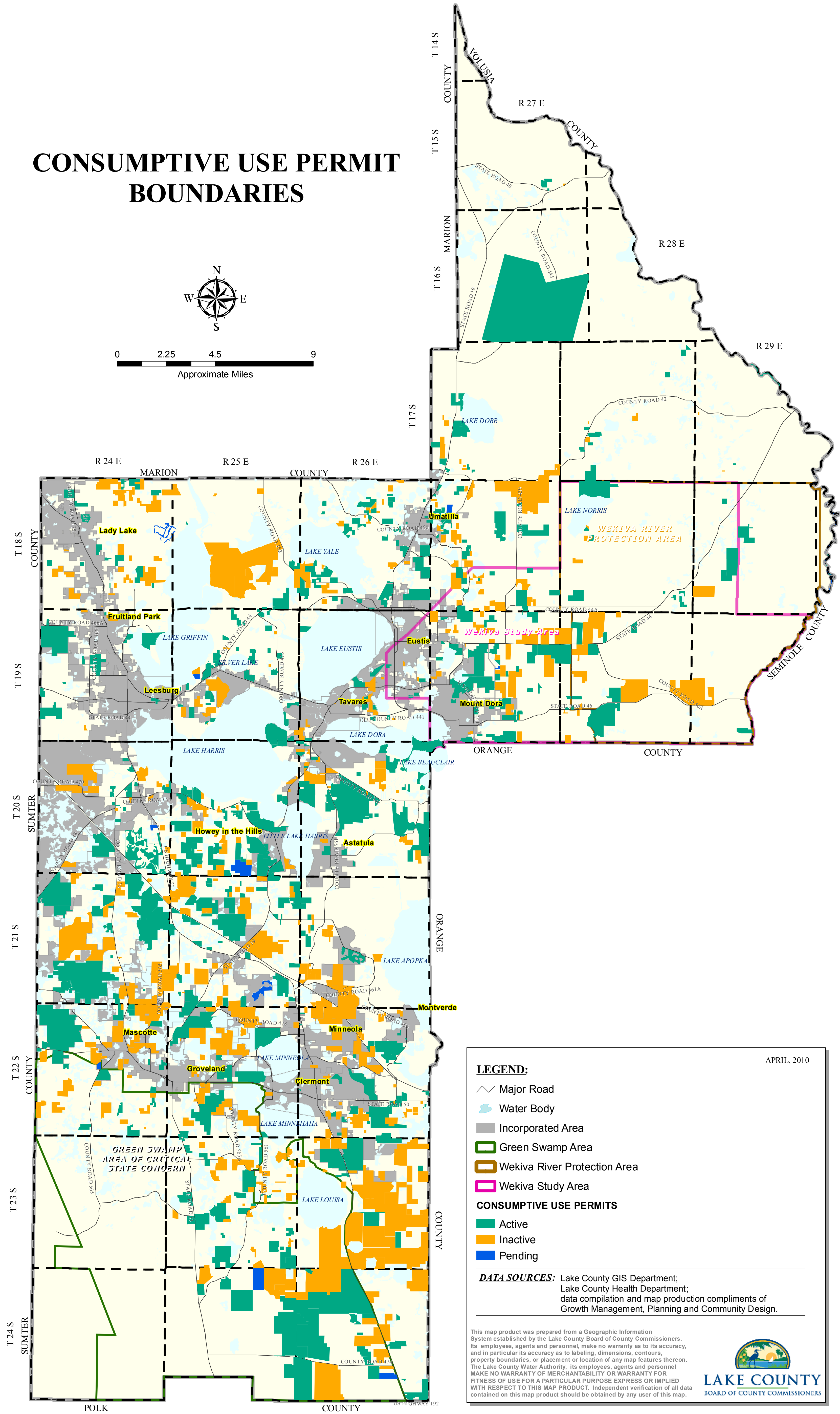
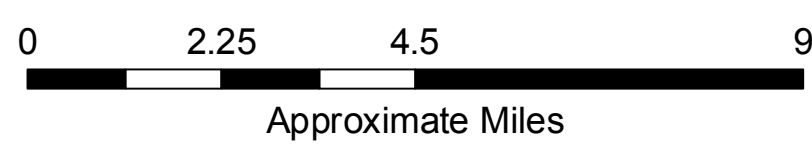
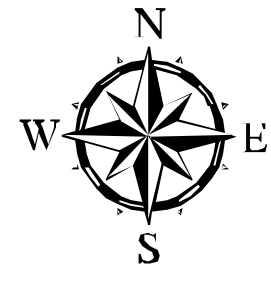


COMPREHENSIVE PLAN 2030

LAKE COUNTY, FLORIDA

CONSUMPTIVE USE PERMIT BOUNDARIES



LEGEND:

- Major Road
- Water Body
- Incorporated Area
- Green Swamp Area
- Wekiva River Protection Area
- Wekiva Study Area

CONSUMPTIVE USE PERMITS

- Active
- Inactive
- Pending

DATA SOURCES: Lake County GIS Department;
Lake County Health Department;
data compilation and map production compliments of
Growth Management, Planning and Community Design.

APRIL, 2010

This map product was prepared from a Geographic Information System established by the Lake County Board of County Commissioners. Its employees, agents and personnel, make no warranty as to its accuracy, and in particular its accuracy as to labeling, dimensions, contours, property boundaries, or placement or location of any map features thereon. The Lake County Water Authority, its employees, agents and personnel MAKE NO WARRANTY OF MERCHANTABILITY OR WARRANTY FOR FITNESS OF USE FOR A PARTICULAR PURPOSE EXPRESS OR IMPLIED WITH RESPECT TO THIS MAP PRODUCT. Independent verification of all data contained on this map product should be obtained by any user of this map.

G:\Workgroups\Planning\County Maps\ConsumptiveUsePermitBoundaries_22x34.mxd

C
O
N
S
E
R
V
A
T
I
O
N
E
L
E
M
E
N
T