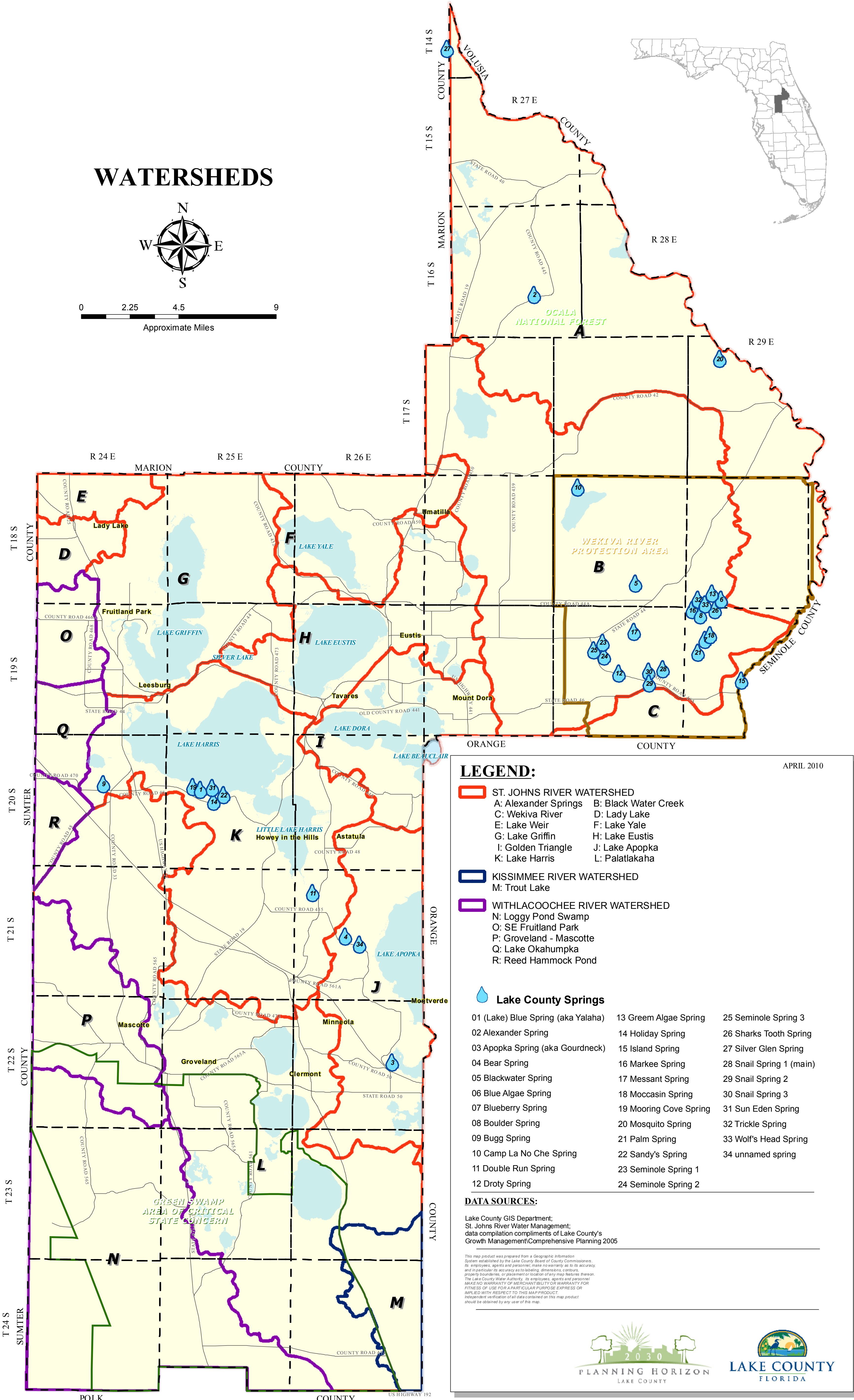
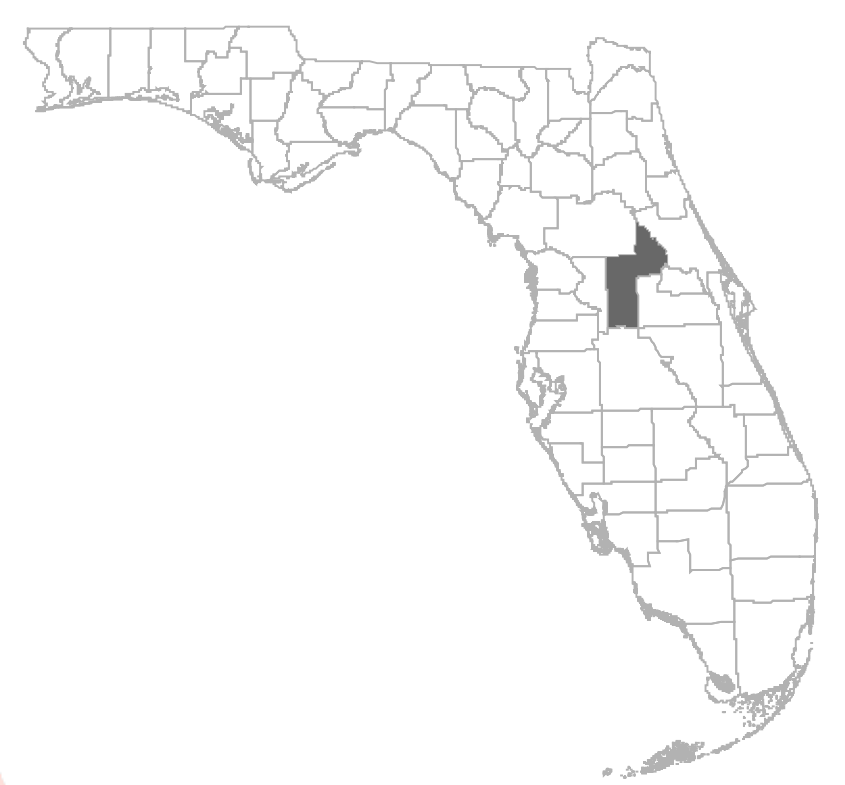
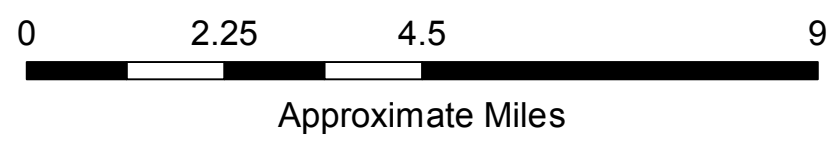
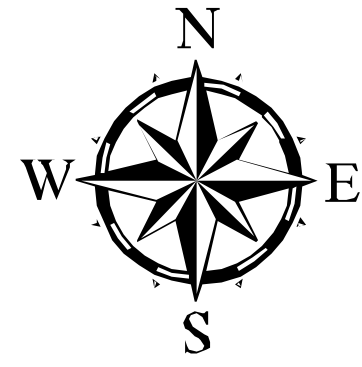


# COMPREHENSIVE PLAN 2030

## LAKE COUNTY, FLORIDA

CONSERVATION

### WATERSHEDS



**LEGEND:** APRIL 2010

- ST. JOHNS RIVER WATERSHED
  - A: Alexander Springs
  - C: Wekiva River
  - E: Lake Weir
  - G: Lake Griffin
  - I: Golden Triangle
  - K: Lake Harris
- KISSIMEE RIVER WATERSHED
  - B: Black Water Creek
  - D: Lady Lake
  - F: Lake Yale
  - H: Lake Eustis
  - J: Lake Apopka
  - L: Palatka
- WITHLACOCHEE RIVER WATERSHED
  - M: Trout Lake
  - N: Loggy Pond Swamp
  - O: SE Fruitland Park
  - P: Groveland - Mascotte
  - Q: Lake Okahumpka
  - R: Reed Hammock Pond

💧 **Lake County Springs**

01 (Lake) Blue Spring (aka Yalaha)	13 Green Algae Spring	25 Seminole Spring 3
02 Alexander Spring	14 Holiday Spring	26 Sharks Tooth Spring
03 Apopka Spring (aka Gourneck)	15 Island Spring	27 Silver Glen Spring
04 Bear Spring	16 Markee Spring	28 Snail Spring 1 (main)
05 Blackwater Spring	17 Messant Spring	29 Snail Spring 2
06 Blue Algae Spring	18 Moccasin Spring	30 Snail Spring 3
07 Blueberry Spring	19 Mooring Cove Spring	31 Sun Eden Spring
08 Boulder Spring	20 Mosquito Spring	32 Trickle Spring
09 Bugg Spring	21 Palm Spring	33 Wolf's Head Spring
10 Camp La No Che Spring	22 Sandy's Spring	34 unnamed spring
11 Double Run Spring	23 Seminole Spring 1	
12 Droty Spring	24 Seminole Spring 2	

**DATA SOURCES:**

Lake County GIS Department;  
 St. Johns River Water Management;  
 data compilation compliments of Lake County's  
 Growth Management/Comprehensive Planning 2005

This map product was prepared from a Geographic Information System established by the Lake County Board of County Commissioners. Its employees, agents and personnel make no warranty as to its accuracy, and in particular its accuracy as to labeling, dimensions, contours, property boundaries, or placement or location of any map features shown. The Lake County Water Authority, its employees, agents and personnel MAKE NO WARRANTY OF MERCHANTABILITY OR WARRANTY FOR FITNESS OF USE FOR A PARTICULAR PURPOSE EXPRESS OR IMPLIED WITH RESPECT TO THIS MAP PRODUCT. Independent verification of all data contained on this map product should be obtained by any user of this map.

