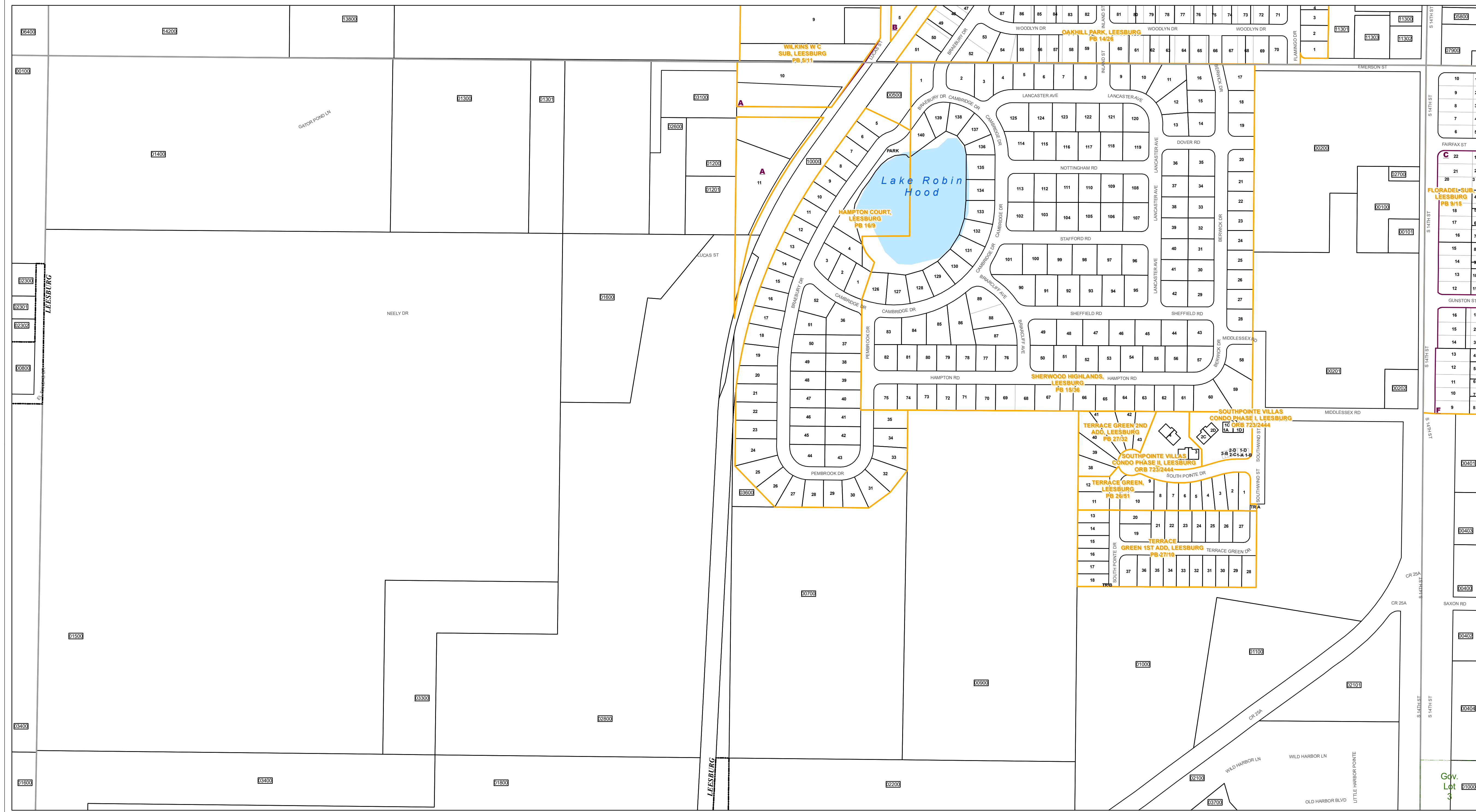




www.lakecopappr.com
CAREY BAKER
LAKE COUNTY PROPERTY APPRAISER
320 W. MAIN STREET
TAVARES, FLORIDA 32778



10	1
9	2
8	3
7	4
6	5
5	6
4	7
3	8
2	9
1	10
11	1
10	2
9	3
8	4
7	5
6	6
5	7
4	8
3	9
2	10
1	11
12	1
11	2
10	3
9	4
8	5
7	6
6	7
5	8
4	9
3	10
2	11
1	12

Lake County Property Appraiser (LCPA) digital Geographic Information System (GIS) cadastral maps are produced solely for ad valorem property assessment purposes and are provided to the public for informational purposes only. LCPA's GIS cadastral maps are NOT legal land surveys and should not be used or relied upon as such. No warranties, expressed or implied, are provided for the map data herein, its positional or thematic accuracy, its use, or its interpretation.

ASSESSMENT MAP
LAKE COUNTY, FLORIDA

Coordinate System: NAD 1983 HARN StatePlane Florida East FIPS 0901 Feet

1824	1825	1826	1827	1828	1829	1830
1924	1925	1926	1927	1928	1929	1930
2024	2025	2026				
2124	2125	2126				
2224	2225	2226				
2324	2325	2326				
2424	2425	2426				

T19-R24-Sec34 N1/2
Date: 1/20/2020