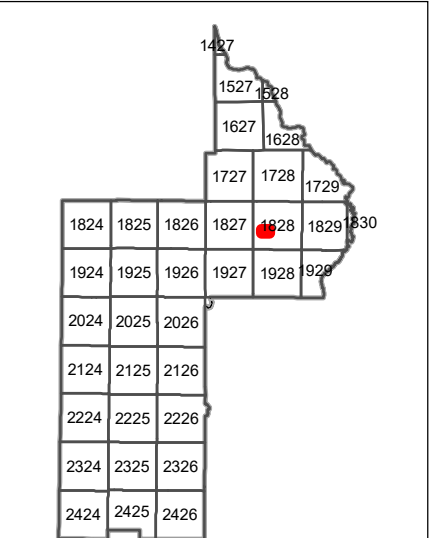
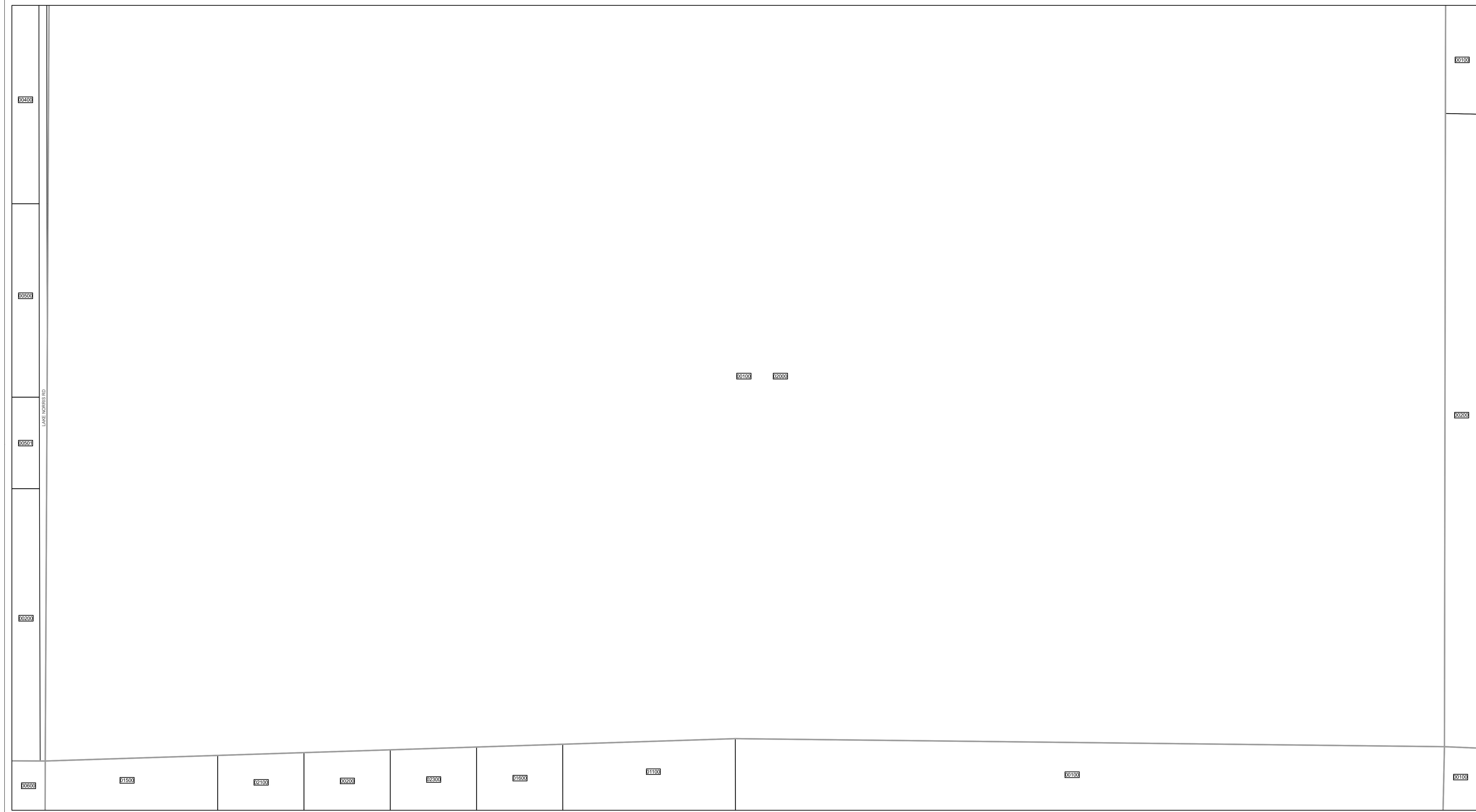




www.lakecopropappr.com  
 CAREY BAKER  
 LAKE COUNTY PROPERTY APPRAISER  
 320 W. MAIN STREET  
 TAVARES, FLORIDA 32778




Lake County Property Appraiser (LCPA) digital Geographic Information System (GIS) cadastral maps are produced solely for ad valorem property assessment purposes and are provided to the public for informational purposes only. LCPA's GIS cadastral maps are NOT legal land surveys and should not be used or relied upon as such. No warranties, expressed or implied, are provided for the map data herein, its positional or thematic accuracy, its use, or its interpretation.

ASSESSMENT MAP  
**LAKE COUNTY, FLORIDA**

Date: 1/20/2020

Coordinate System: NAD 1983 HARN StatePlane Florida East FIPS 0901 Feet

**T18-R28-Sec20 S1/2**  
 Date: 1/20/2020

Path: \\lakegov\bc\logis\Workgroups\PropertyAppraiser\TaxMaps\2019\TaxMap\_HalfSectionAerial\_Updated.mxd