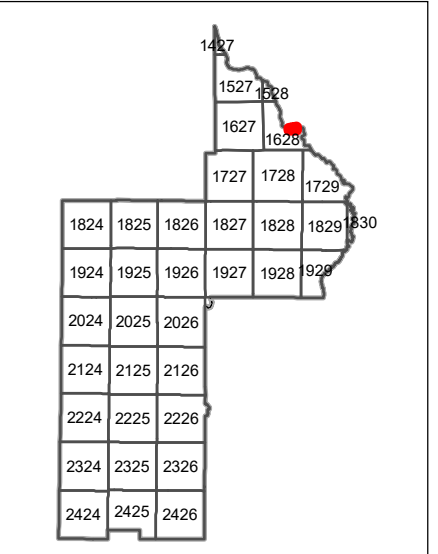
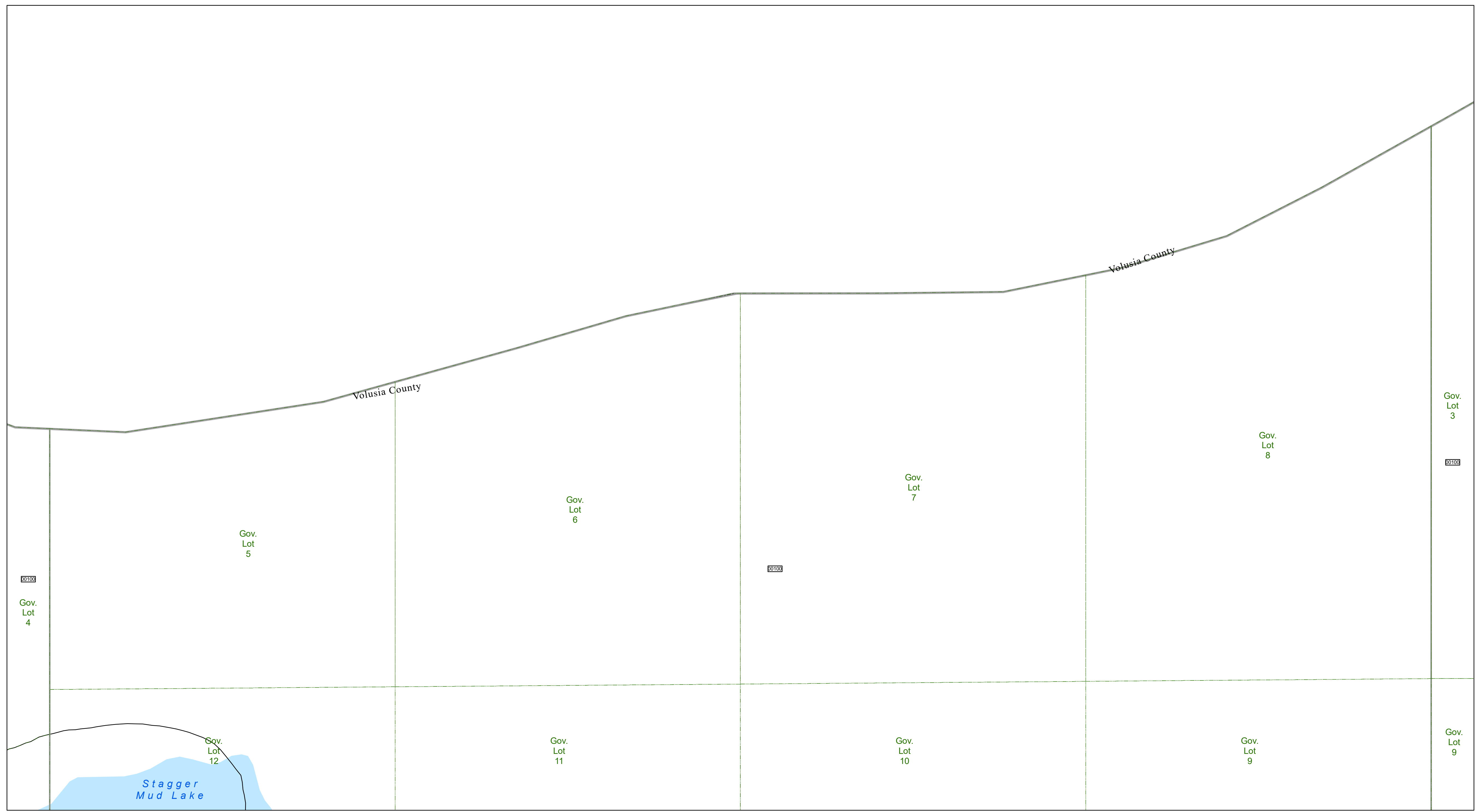




www.lakecopropappr.com
CAREY BAKER
LAKE COUNTY PROPERTY APPRAISER
320 W. MAIN STREET
TAVARES, FLORIDA 32778



1824	1825	1826	1827	1828	1829
1924	1925	1926	1927	1928	1929
2024	2025	2026			
2124	2125	2126			
2224	2225	2226			
2324	2325	2326			
2424	2425	2426			

Legend:

- Tax Parcels (thin black line)
- Subdivision Lots (dashed black line)
- Subdivision Blocks (dotted black line)
- Subdivision Boundaries (thick black line)
- Easements (blue hatched area)
- Right of Way (dashed black line)
- City Limits (dotted black line)
- Lakes (blue area)
- Government Lots (dashed green line)
- Section Lines (dotted black line)
- County Boundary (thick grey line)

Lake County Property Appraiser (LCPA) digital Geographic Information System (GIS) cadastral maps are produced solely for ad valorem property assessment purposes and are provided to the public for informational purposes only. LCPA's GIS cadastral maps are NOT legal land surveys and should not be used or relied upon as such. No warranties, expressed or implied, are provided for the map data herein, its positional or thematic accuracy, its use, or its interpretation.

ASSESSMENT MAP
LAKE COUNTY, FLORIDA

0 100 200 Feet

Coordinate System: NAD 1983 HARN StatePlane Florida East FIPS 0901 Feet

T16-R28-Sec22 N1/2
Date: 1/19/2020

Path: \\lakegov\bc\logis\Workgroups\PropertyAppraiser\Tax\Maps\2019\TaxMap_HalfSectionAerial_Updated.mxd