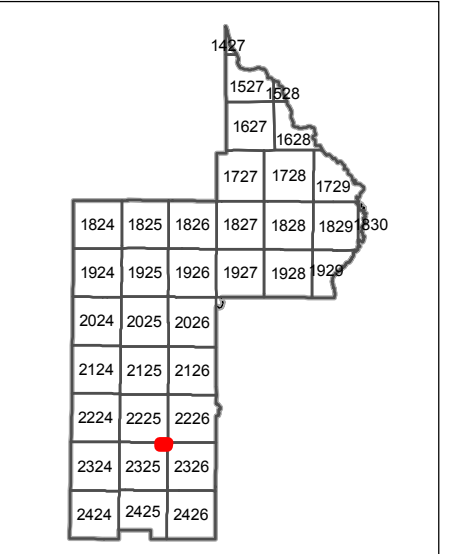
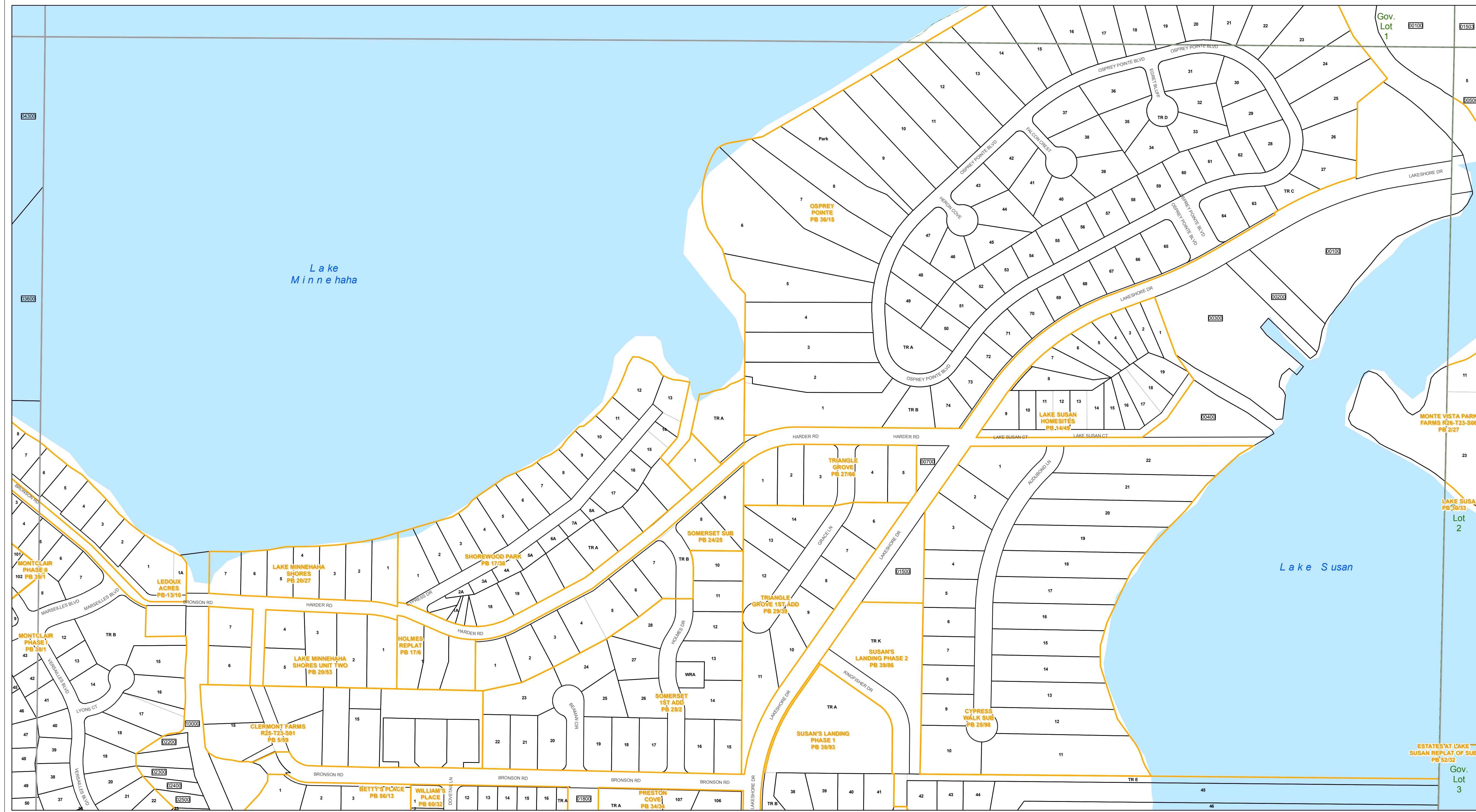




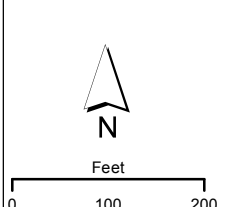
www.lakecopappr.com
 CAREY BAKER
 LAKE COUNTY PROPERTY APPRAISER
 320 W. MAIN STREET
 TAVARES, FLORIDA 32778



Legend:

- Tax Parcels (thin black line)
- Subdivision Lots (dashed black line)
- Subdivision Blocks (dotted black line)
- Subdivision Boundaries (thick orange line)
- Easements (blue hatched area)
- Right of Way (dashed grey line)
- City Limits (dashed black line)
- Lakes (light blue area)
- Government Lots (green hatched area)
- Section Lines (dotted grey line)
- County Boundary (thick grey line)

Lake County Property Appraiser (LCPA) digital Geographic Information System (GIS) cadastral maps are produced solely for ad valorem property assessment purposes and are provided to the public for informational purposes only. LCPA's GIS cadastral maps are NOT legal land surveys and should not be used or relied upon as such. No warranties, expressed or implied, are provided for the map data herein, its positional or thematic accuracy, its use, or its interpretation.



ASSESSMENT MAP
LAKE COUNTY, FLORIDA
 Coordinate System: NAD 1983 HARN StatePlane Florida East FIPS 0901 Feet

T23-R25-Sec01 N1/2
 Date: 1/21/2020

Path: \\lakegov\bcclcgis\Workgroups\PropertyAppraiser\TaxMaps\2019\TaxMap_HalfSection_Updated.mxd