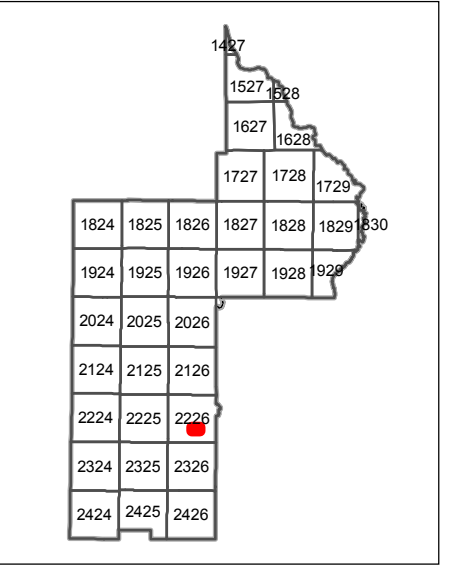
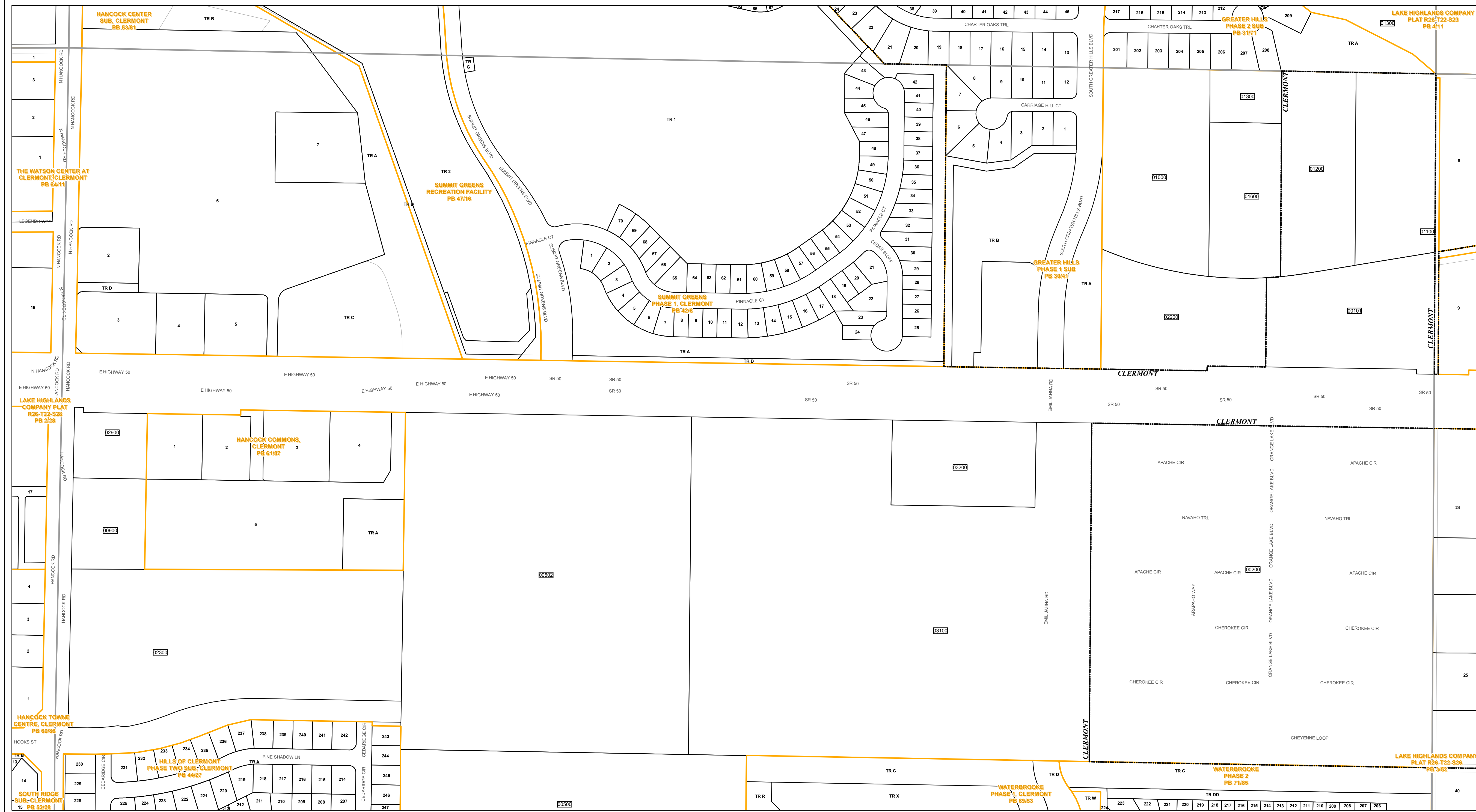


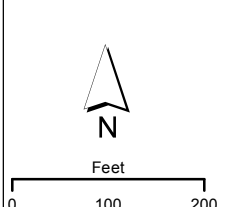


www.lakecoprappr.com
CAREY BAKER
LAKE COUNTY PROPERTY APPRAISER
320 W. MAIN STREET
TAVARES, FLORIDA 32778



- Tax Parcels
- Subdivision Lots
- Subdivision Blocks
- Subdivision Boundaries
- Easements
- Right of Way
- City Limits
- Lakes
- Government Lots
- Section Lines
- County Boundary

Lake County Property Appraiser (LCPA) digital Geographic Information System (GIS) cadastral maps are produced solely for ad valorem property assessment purposes and are provided to the public for informational purposes only. LCPA's GIS cadastral maps are NOT legal land surveys and should not be used or relied upon as such. No warranties, expressed or implied, are provided for the map data herein, its positional or thematic accuracy, its use, or its interpretation.



ASSESSMENT MAP
LAKE COUNTY, FLORIDA
Coordinate System: NAD 1983 HARN StatePlane Florida East FIPS 0901 Feet

T22-R26-Sec27 N1/2
Date: 1/21/2020

Path: \\lakegov\bcclcgis\Workgroups\PropertyAppraiser\TaxMaps\2019\TaxMap_HalfSection_Updated.mxd