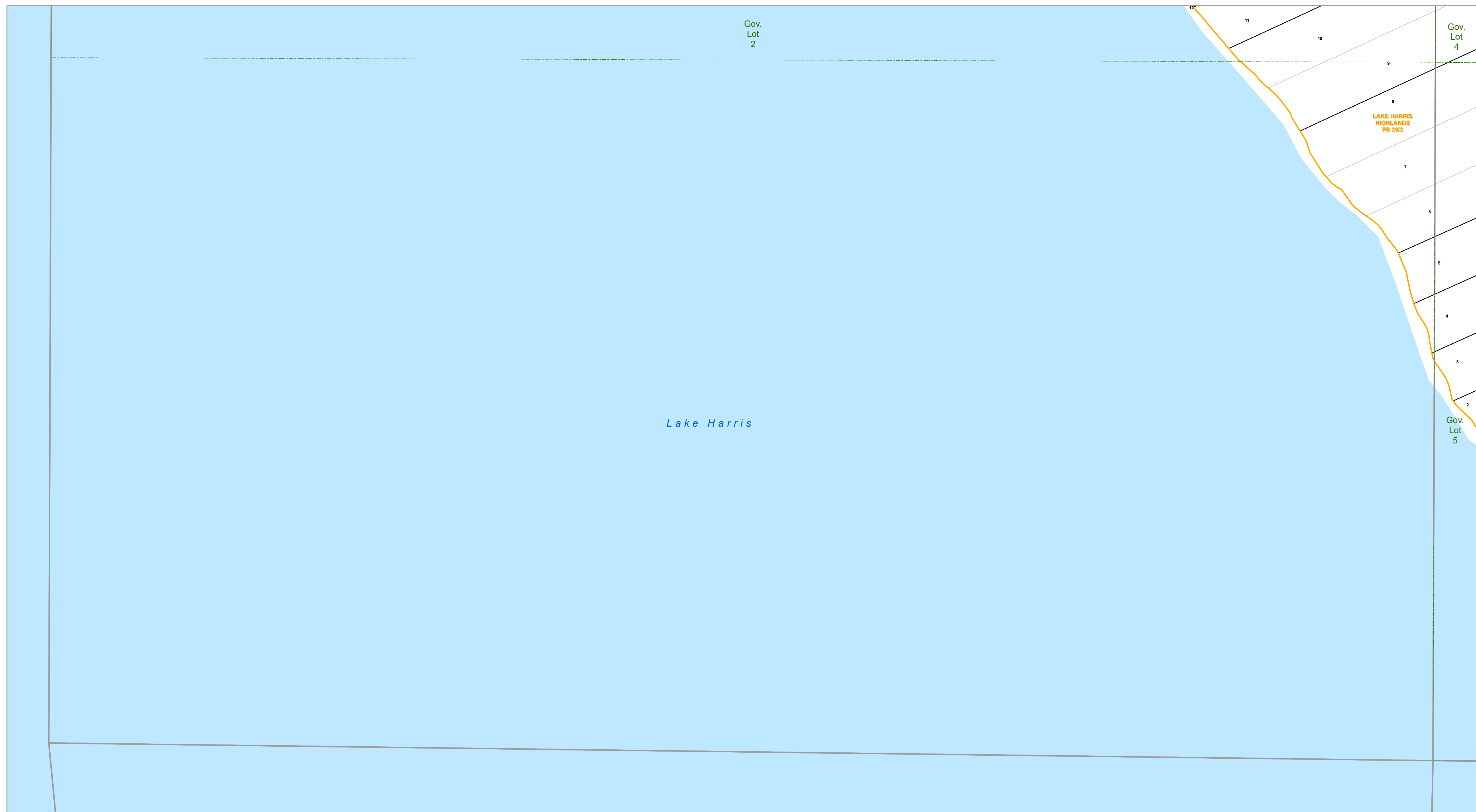


Path: \\lakegov\bc\logis\Workgroups\PropertyAppraiser\TaxMaps\2019\TaxMap\_HalfSection\_Updated.mxd



# TAX YEAR 2020



www.lakecopropappr.com  
 CAREY BAKER  
 LAKE COUNTY PROPERTY APPRAISER  
 320 W. MAIN STREET  
 TAVARES, FLORIDA 32778

Lake Harris

- Tax Parcels
- Easements
- Government Lots
- Subdivision Lots
- Right of Way
- Section Lines
- Subdivision Blocks
- City Limits
- County Boundary
- Subdivision Boundaries
- Lakes

Lake County Property Appraiser (LCPA) digital Geographic Information System (GIS) cadastral maps are produced solely for ad valorem property assessment purposes and are provided to the public for informational purposes only. LCPA's GIS cadastral maps are NOT legal land surveys and should not be used or relied upon as such. No warranties, expressed or implied, are provided for the map data herein, its positional or thematic accuracy, its use, or its interpretation.

Coordinate System: NAD 1983 HARN StatePlane Florida East FIPS 0901 Feet

ASSESSMENT MAP  
**LAKE COUNTY, FLORIDA**

**T20-R25-Sec02 S1/2**  
 Date: 1/17/2020

